

## SUPPLEMENTARY MATERIAL

### **Phylogeographic evidence for evolutionary refugia in the Gulf sandstone ranges of northern Australia**

*Catherine Noble<sup>A</sup>, Rebecca J. Laver<sup>A</sup>, Dan F. Rosauer<sup>A</sup>, Simon Ferrier<sup>B</sup> and Craig Moritz<sup>A,C</sup>*

<sup>A</sup> Division of Ecology and Evolution, Research School of Biology, and Centre for Biodiversity Analysis, The Australian National University, Building 116, Daley Road, Acton, ACT 2601, Australia.

<sup>B</sup> CSIRO Land and Water, Black Mountain, ACT 2601, Australia.

<sup>C</sup> Corresponding author. Email: [craig.moritz@anu.edu.au](mailto:craig.moritz@anu.edu.au).

**Supplementary Material:** specimen numbers, localities and GenBank accession details (Table S1); details of loci sequenced, primers and sequencing protocols (Table S2); partitioning strategies and modelling schemes used in phylogenetic analyses (Table S3); mitochondrial diversity and tests of population expansion (Table S4); network visualisation of nuclear DNA clustering analysis (Fig. S1).

**Table S1. Details of sampling from the *Gehyra australis* species-group**

Specimen numbers, localities, and GenBank accession details for sampled specimens included in molecular and phylogenetic analyses.

mtDNA lineage	Specimen #	Lat	Long	Locality	ND2	BDNF	Exon 687	Exon 4832	Exon 10290	Exon 14121	Exon 17840	Exon 22560	PRLR
<i>Gehyra australis</i>													
aus1	AMSR139934	-16.02	128.00	WA: El Questro	JN019081	-	-	-	-	-	-	-	-
aus1	CCM1948	-18.32	133.80	NT: Renner Springs RH	KX815672	-	-	-	-	-	-	-	-
aus1	CMNT163	-16.12	130.96	NT: Victoria Rvr Research Stn (Kidman Springs)	KX815621	-	-	-	-	-	-	-	-
aus1	CMNT164	-16.12	130.96	NT: Victoria Rvr Research Stn (Kidman Springs)	KX815622	-	-	-	-	-	-	-	-
aus1	NTMR35187	-16.70	135.67	NT: Carpentaria Hwy btwn Cape Crawford & Daly Waters	KX815597	MG656662	MG656703	MG656743	MG656895	MG656781	MG656821	MG656936	MG656862
aus1	NTMR20506	-16.68	135.72	NT: Cape Crawford	KX815604	MG656663	-	MG656744	MG656896	MG656782	MG656822	MG656937	MG656863
aus1	NTMR20507	-16.68	135.72	NT: Cape Crawford	KX815600	-	-	-	-	-	-	-	-
aus1	NTMR20509	-16.63	135.80	NT: Cape Crawford area	KX815595	-	-	-	-	-	-	-	-
aus1	NTMR20520	-16.78	135.75	NT: McArthur Rvr Bridge	KX815596	-	-	-	-	-	-	-	-
aus1	NTMR20543	-16.69	135.70	NT: Cape Crawford area	KX815601	-	-	-	-	-	-	-	-
aus1	NTMR22307	-15.55	135.41	NT: Catfish Billabong Limmen Gate NP	KX815593	MG656664	MG656704	MG656745	MG656897	MG656783	MG656823	MG656938	MG656864
aus1	NTMR35153	-16.68	135.73	NT: Cape Crawford, Heartbreak Htl	KX815602	-	-	-	-	-	-	-	-
aus1	NTMR35188	-16.70	135.67	NT: Carpentaria Hwy btwn Cape Crawford & Daly Waters	KX815598	-	-	-	-	-	-	-	-
aus1	PMO209	-18.61	126.09	WA: Galeru Grg	KX815616	-	-	-	-	-	-	-	-
aus1	SAMR34176	-16.30	133.38	NT: S Daly Waters	KJ025209	-	-	-	-	-	-	-	-
aus1	SAMR51105	-15.97	127.93	WA: Pentecost Rvr, El Questro Stn	KX815667	-	-	-	-	-	-	-	-
aus1	SAMR54011	-19.71	135.83	NT: Barkly RH	KX815603	-	-	-	-	-	-	-	-
aus1	TR744	-15.82	128.10	WA: Cockburn Rng	KX815668	-	-	-	-	-	-	-	-
aus1	WAMR108761	-17.25	128.30	WA: Bream Grg	KX815676	-	-	-	-	-	-	-	-
aus1	WAMR114001	-15.35	126.62	WA: Carson escarpment	KX815632	-	-	-	-	-	-	-	-
aus1	WAMR126028	-15.36	129.13	NT: 30KM ENE Point Spring Yard	KX815674	-	-	-	-	-	-	-	-
aus1	WAMR126035	-15.36	129.13	NT: 30KM ENE Point Spring Yard	KX815673	-	-	-	-	-	-	-	-
aus1	WAMR130716	-15.57	128.87	WA: Butterfly Springs	KX815671	-	-	-	-	-	-	-	-
aus1	WAMR131814	-15.77	128.72	WA: Kununurra	KX815664	-	-	-	-	-	-	-	-
aus1	WAMR134629	-21.81	114.12	WA: Exmouth	KX815656	-	-	-	-	-	-	-	-
aus1	WAMR146021	-16.68	123.83	WA: Kimbolton HS	KX815639	-	-	-	-	-	-	-	-
aus1	WAMR146053	-16.76	123.99	WA: Oobagooma HS	KX815650	-	-	-	-	-	-	-	-
aus1	WAMR164605	-17.76	122.91	WA: 46KM E Roebuck Plains RH	KX815646	-	-	-	-	-	-	-	-
aus1	WAMR164681	-17.34	123.68	WA: Derby	KX815655	-	-	-	-	-	-	-	-

aus1	WAMR164755	-17.95	127.79	WA: Halls Creek area	KX815654	MG656665	MG656705	MG656746	MG656898	MG656784	MG656824	MG656939	MG656865
aus1	WAMR168505	-17.97	122.23	WA: Broome	KX815661	-	-	-	-	-	-	-	-
aus1	WAMR172043	-16.43	123.18	WA: Sunday Island	KX815644	-	-	-	-	-	-	-	-
aus1	WAMR172044	-16.43	123.18	WA: Sunday Island	KX815643	-	-	-	-	-	-	-	-
aus1	WAMR172045	-16.43	123.18	WA: Sunday Island	KX815645	-	-	-	-	-	-	-	-
aus1	WAMR172048	-18.11	125.70	WA: Geikie Grg	KX815648	-	-	-	-	-	-	-	-
aus1	WAMR172049	-16.43	123.18	WA: Sunday Island	KX815642	-	-	-	-	-	-	-	-
aus1	WAMR172323	-17.46	122.20	WA: 80KM N Broome	KX815647	-	-	-	-	-	-	-	-
aus1	WAMR172347	-14.81	126.49	WA: Theda Stn, N Kimberley	KX815634	-	-	-	-	-	-	-	-
aus1	WAMR172725	-17.41	124.94	WA: Windjana Grg NP Public Campsite	KX815649	-	-	-	-	-	-	-	-
aus1	WAMR172872	-15.98	127.05	WA: Ellenbrae Stn	KX815612	-	-	-	-	-	-	-	-
aus1	WAMR172873	-15.98	127.05	WA: Ellenbrae Stn	KX815669	-	-	-	-	-	-	-	-
aus1	WAMR172908	-15.44	125.39	WA: Doongan Stn	MG656455	-	-	-	-	-	-	-	-
aus1	WAMR172913	-15.13	125.15	WA: Doongan Stn	KX815638	-	-	-	-	-	-	-	-
aus1	WAMR173511	-15.77	128.73	WA: Kimberley Grande Hotel	KX815665	-	-	-	-	-	-	-	-
aus1	WAMR173512	-15.77	128.73	WA: Ivanhoe Caravan Park	KX815662	-	-	-	-	-	-	-	-
aus1	WAMR173513	-15.70	126.38	WA: Drysdale Stn Caravan Park	KX815627	-	-	-	-	-	-	-	-
aus1	WAMR173997	-14.80	126.93	WA: Swamp campsite	KX815633	-	-	-	-	-	-	-	-
aus1	ABTC06923	-15.62	136.35	NT: Bing Bong	KX815591	-	-	-	-	-	-	-	-
aus1	CCM0367	-17.20	137.43	NT: Calvert Hills Campsite	KX815605	-	-	-	-	-	-	-	-
aus1	CCM0384	-16.64	135.85	NT: McArthur Rvr Stn Campsite	KX815608	-	-	-	-	-	-	-	-
aus1	CCM0385	-16.64	135.85	NT: McArthur Rvr Stn Campsite	KX815607	-	-	-	-	-	-	-	-
aus1	CCM0388	-16.64	135.85	NT: McArthur Rvr Stn Spotlighting	KX815599	-	-	-	-	-	-	-	-
aus1	CCM0404	-16.64	135.85	NT: McArthur Rvr Stn Campsite	KX815610	-	-	-	-	-	-	-	-
aus1	CCM0405	-16.64	135.85	NT: McArthur Rvr Stn Campsite	KX815606	MG656666	MG656706	MG656747	MG656899	MG656785	MG656825	MG656940	MG656866
aus1	CCM0406	-16.65	135.85	NT: McArthur Rvr Stn Meatworks Tip	KX815609	-	-	-	-	-	-	-	-
aus1	CCM0554	-15.61	131.12	NT: Vic Rvr Region Escarpment Walk	KX815623	MG656667	MG656707	MG656748	MG656900	MG656786	MG656826	MG656941	MG656867
aus1	CCM0745	-15.13	126.14	WA: Old Mitchell Rd	KX815636	-	-	-	-	-	-	-	-
aus1	CCM0826	-15.34	126.59	WA: Carson escarpment - near camp	KX815631	-	-	-	-	-	-	-	-
aus1	CCM1054	-16.10	126.51	WA: Gibb Rvr Camp	KX815629	-	-	-	-	-	-	-	-
aus1	CCM1284	-17.15	125.46	WA: Imintji tip	KX815663	-	-	-	-	-	-	-	-
aus1	CCM1436	-17.51	126.11	WA: Mornington campground	KX815625	-	-	-	-	-	-	-	-
aus1	CCM1437	-17.51	126.11	WA: Mornington campground	KX815626	-	-	-	-	-	-	-	-
aus1	CCM1491	-17.06	126.84	WA: Marion Downs tip	KX815666	-	-	-	-	-	-	-	-

aus1	CCM1520	-16.83	126.23	WA: Police camp	KX815637	-	-	-	-	-	-	-	-
aus1	CCM1771	-17.10	128.27	WA: Texas Downs Camp	KX815678	-	-	-	-	-	-	-	-
aus1	CCM2019	-14.91	133.71	NT: Rdside stop 73k E Roper Hwy	KX815586	-	-	-	-	-	-	-	-
aus1	CCM2218	-14.78	134.67	NT: Tomato Island west	MG656456	-	-	-	-	-	-	-	-
aus1	CCM2219	-14.78	134.67	NT: Tomato Island west	KX815589	-	-	-	-	-	-	-	-
aus1	CCM2220	-14.78	134.67	NT: Tomato Island west	MG656457	-	-	-	-	-	-	-	-
aus1	CCM2479	-15.63	135.46	NT: Butterfly Springs rocks	KX815592	-	-	-	-	-	-	-	-
aus1	CCM2612	-15.63	135.46	NT: Southern Lost City, Limmen NP	KX815594	-	-	-	-	-	-	-	-
aus1	CCM2618	-15.68	135.62	NT: Fossil Fern, Lorella Springs Stn	KX815590	-	-	-	-	-	-	-	-
aus1	CCM2672	-16.27	136.08	NT: Caranbirini Conservation reserve	KX815611	-	-	-	-	-	-	-	-
aus1	CCM2959	-15.97	130.30	NT: East Baines Xing	KX815657	-	-	-	-	-	-	-	-
aus1	CCM3025	-16.45	130.10	NT: East Baines Camp	KX815658	-	-	-	-	-	-	-	-
aus1	CCM3036	-18.43	127.82	NT: Saw Tooth Grg	MG656458	-	-	-	-	-	-	-	-
aus1	CCM3042	-18.43	127.82	NT: Saw Tooth Grg	KX815659	-	-	-	-	-	-	-	-
aus1	CCM3086	-15.83	129.10	NT: Keep Rvr Grg	KX815653	-	-	-	-	-	-	-	-
aus1	CCM3220	-17.34	128.05	WA: Muluk Rest Area, off Great Nth Hwy, S Warmun	KX815680	-	-	-	-	-	-	-	-
aus1	CCM3221	-17.34	128.05	WA: Muluk Rest Area, off Great Nth Hwy, S Warmun	MG656459	-	-	-	-	-	-	-	-
aus1	CCM3224	-17.42	128.09	WA: Site 3, along creek S Warmun	MG656460	-	-	-	-	-	-	-	-
aus1	CCM3225	-17.42	128.09	WA: Site 3, along creek S Warmun	KX815675	-	-	-	-	-	-	-	-
aus1	CCM3298	-18.32	125.80	WA: Gogo Stn, Creek Xing	KX815618	-	-	-	-	-	-	-	-
aus1	CCM3309	-18.11	125.70	WA: Geikie Grg, Ranger Stn	MG656461	-	-	-	-	-	-	-	-
aus1	CCM3325	-18.52	125.92	WA: Gogo Stn, by Stn track S Bob's Bore	KX815617	-	-	-	-	-	-	-	-
aus1	CCM3373	-17.15	125.45	WA: Imitji Tip	MG656462	-	-	-	-	-	-	-	-
aus1	CCM3374	-17.15	125.42	WA: Gibb Rvr Rd, border King Leopold Rng Cons. Prk	KX815624	-	-	-	-	-	-	-	-
aus1	CCM4992	-14.75	134.69	NT: Tomato Island	MG656463	-	-	-	-	-	-	-	-
aus1	CCM5000	-14.75	134.69	NT: Tomato Island	MG656464	-	-	-	-	-	-	-	-
aus1	CCM5002	-14.75	134.69	NT: Tomato Island	MG656465	-	-	-	-	-	-	-	-
aus1	CCM6376	-16.97	135.80	NT: Mallapunya Stn sandstone	MG656466	-	-	-	-	-	-	-	-
aus1	CCM6377	-16.97	135.80	NT: Mallapunya Stn sandstone	MG656467	-	-	-	-	-	-	-	-
aus2	NTMR13584	-11.55	132.93	NT: Murgarella	MG656468	-	-	-	-	-	-	-	-
aus2	NTMR20910	-11.15	132.17	NT: Black Point	MG656469	-	-	-	-	-	-	-	-
aus2	NTMR21022	-11.15	132.17	NT: Black Point	KJ025211	-	-	-	-	-	-	-	-
aus2	NTMR21066	-11.15	132.17	NT: Black Point	MG656470	-	-	-	-	-	-	-	-
aus2	NTMR27565	-12.72	131.70	NT: Near Couzins Lookout, Wildman Rvr Reserve	MG656471	-	-	-	-	-	-	-	-

aus2	NTMR36833	-13.76	131.76	NT: Stuart Hwy, 11km N Pine Creek	MG656472	-	-	-	-	-	-	-	-	-	-	-	-	-
aus2	NTMR36854	-13.68	132.05	NT: ~40km E of Stuart Hwy on Kakadu Hwy	KX815581	-	-	-	-	-	-	-	-	-	-	-	-	-
aus2	NTMR36861	-13.59	131.46	NT: Ridge behind Hayes Creek Rdhouse	MG656473	-	-	-	-	-	-	-	-	-	-	-	-	-
aus2	NTMR36876	-14.46	132.78	NT: Rd into Eva Valley, S Manyallaluk, E Katherine	MG656474	-	-	-	-	-	-	-	-	-	-	-	-	-
aus2	NTMR36888	-14.51	132.85	NT: Ridge on Central Arnhem Rd, before Barunga	MG656475	-	-	-	-	-	-	-	-	-	-	-	-	-
aus2	NTMR36901	-12.90	131.15	NT: E of Stuart Hwy on Marrakai Rd	MG656476	-	-	-	-	-	-	-	-	-	-	-	-	-
aus2	NTMR36902	-12.90	131.15	NT: E of Stuart Hwy on Marrakai Rd	KX815584	-	-	-	-	-	-	-	-	-	-	-	-	-
aus2	NTMR36903	-12.90	131.15	NT: E of Stuart Hwy on Marrakai Rd	MG656477	-	-	-	-	-	-	-	-	-	-	-	-	-
aus2	NTMR36904	-12.90	131.15	NT: E of Stuart Hwy on Marrakai Rd	MG656478	-	-	-	-	-	-	-	-	-	-	-	-	-
aus2	NTMR36906	-12.91	131.16	NT: E of Stuart Hwy on Marrakai Rd	MG656479	-	-	-	-	-	-	-	-	-	-	-	-	-
aus2	NTMR36907	-12.91	131.16	NT: E of Stuart Hwy on Marrakai Rd	MG656480	-	-	-	-	-	-	-	-	-	-	-	-	-
aus2	NTMR36908	-12.91	131.16	NT: E of Stuart Hwy on Marrakai Rd	KX815585	-	-	-	-	-	-	-	-	-	-	-	-	-
aus2	SAMR34116	-12.65	132.88	NT: Jabiru East	KX815583	-	-	-	-	-	-	-	-	-	-	-	-	-
aus2	SAMR34136	-12.67	132.88	NT: Jabiru	KJ025210	-	-	-	-	-	-	-	-	-	-	-	-	-
aus2	CCM0468	-13.43	132.42	NT: Kakadu Gunlom Campgrounds Toilet Block	MG656481	-	-	-	-	-	-	-	-	-	-	-	-	-
aus2	CCM0469	-13.43	132.42	NT: Kakadu Gunlom Campgrounds Toilet Block	MG656482	-	-	-	-	-	-	-	-	-	-	-	-	-
aus2	CCM0471	-13.43	132.42	NT: Kakadu Gunlom Tree Camp	MG656483	-	-	-	-	-	-	-	-	-	-	-	-	-
aus2	CCM0477	-13.43	132.42	NT: Kakadu Gunlom Campgrounds Toilet Block	MG656484	MG656668	MG656708	MG656749	MG656901	MG656787	MG656827	MG656942	MG656868	-	-	-	-	-
aus2	CCM1704	-13.58	131.46	NT: Hayes creek camp	MG656485	-	-	-	-	-	-	-	-	-	-	-	-	-
aus2	CCM1705	-13.58	131.46	NT: Hayes creek camp	MG656486	-	-	-	-	-	-	-	-	-	-	-	-	-
aus2	CCM1711	-13.58	131.46	NT: Hayes creek camp	MG656487	-	-	-	-	-	-	-	-	-	-	-	-	-
aus2	CCM1712	-13.58	131.46	NT: Hayes creek camp	MG656488	MG656669	MG656709	-	MG656902	MG656788	MG656828	MG656943	MG656869	-	-	-	-	-
aus2	CCM2943	-14.48	132.35	NT: 11km south of Katherine	MG656489	-	-	-	-	-	-	-	-	-	-	-	-	-
aus2	CCM2944	-14.48	132.35	NT: 11km south of Katherine	MG656490	-	-	-	-	-	-	-	-	-	-	-	-	-
aus2	CCM3121	-14.40	132.14	NT: Charles Darwin Uni Katherine, accom area	MG656491	-	-	-	-	-	-	-	-	-	-	-	-	-
aus2	CCM3784	-12.69	132.40	NT: Kapalga, KNP	MG656492	-	-	-	-	-	-	-	-	-	-	-	-	-
aus2	CCM4904	-14.17	133.73	NT: Mountain Valley, 1km SW Flying Fox Ck	MG656493	-	-	-	-	-	-	-	-	-	-	-	-	-
aus2	CCM4908	-14.17	133.73	NT: Mountain Valley, 1km SW Flying Fox Ck	MG656494	-	-	-	-	-	-	-	-	-	-	-	-	-
aus2	CCM4911	-14.17	133.73	NT: Mountain Valley, 1km SW Flying Fox Ck	MG656495	-	-	-	-	-	-	-	-	-	-	-	-	-
aus2	CCM5469	-14.03	132.31	NT: Site 15 rocks, Nitmiluk NP	MG656496	-	-	-	-	-	-	-	-	-	-	-	-	-
aus2	CCM5490	-14.03	132.31	NT: S. camp 14/15, Nitmiluk NP	MG656497	-	-	-	-	-	-	-	-	-	-	-	-	-
aus2	CCM5500	-14.02	132.27	NT: Site 25B, Nitmiluk NP	MG656498	-	-	-	-	-	-	-	-	-	-	-	-	-
aus2	CCM5663	-14.20	132.17	NT: Site 12B, Nitmiluk NP	MG656499	-	-	-	-	-	-	-	-	-	-	-	-	-
aus3	10W02	-14.06	134.42	NT: W02 wetland	MG656500	-	-	-	-	-	-	-	-	-	-	-	-	-

aus3	1W02	-14.06	134.42	NT: W02 wetland	MG656501	-	-	-	-	-	-	-	-
aus3	2W02	-14.06	134.42	NT: W02 wetland	MG656502	-	-	-	-	-	-	-	-
aus3	3W02	-14.06	134.42	NT: W02 wetland	MG656503	-	-	-	-	-	-	-	-
aus3	4W02	-14.06	134.42	NT: W02 wetland	MG656504	-	-	-	-	-	-	-	-
aus3	5W02	-14.06	134.42	NT: W02 wetland	MG656505	-	-	-	-	-	-	-	-
aus3	6W02	-14.06	134.42	NT: W02 wetland	MG656506	-	-	-	-	-	-	-	-
aus3	7W02	-14.06	134.42	NT: W02 wetland	MG656507	-	-	-	-	-	-	-	-
aus3	8W02	-14.06	134.42	NT: W02 wetland	MG656508	-	-	-	-	-	-	-	-
aus3	9W02	-14.06	134.42	NT: W02 wetland	MG656509	-	-	-	-	-	-	-	-
aus3	AMSR138730	-13.83	136.42	NT: Groote Eylandt	JN393925	-	-	-	-	-	-	-	-
aus3	HS2	-14.14	134.47	NT: homestead	MG656510	-	-	-	-	-	-	-	-
aus3	HS3	-14.14	134.47	NT: homestead	MG656511	-	-	-	-	-	-	-	-
aus3	HS4	-14.14	134.47	NT: homestead	MG656512	-	-	-	-	-	-	-	-
aus3	NTMR22626	-15.31	135.34	NT: Long Billabong Roper Rvr	MG656513	MG656670	MG656710	MG656750	MG656903	-	MG656829	MG656944	MG656870
aus3	NTMR22628	-15.31	135.34	NT: Long Billabong Roper Rvr	MG656514	-	-	-	-	-	-	-	-
aus3	W451	-14.25	134.11	NT: Jalboi Rvr	MG656515	-	-	-	-	-	-	-	-
aus3	W452	-14.22	134.11	NT: Jalboi Rvr	MG656516	-	-	-	-	-	-	-	-
aus3	ABTC27725	-14.72	134.51	NT: Urapunga Stn	MG656517	MG656671	MG656711	MG656751	MG656904	MG656789	MG656830	MG656945	MG656871
aus3	CCM1965	-14.10	134.40	NT: AWC Wongalara	MG656518	-	-	-	-	-	-	-	-
aus3	CCM2271	-14.31	135.06	NT: Lake Katherine camp	MG656519	-	-	-	-	-	-	-	-
aus3	CCM2272	-14.31	135.06	NT: Lake Katherine camp	MG656520	-	-	-	-	-	-	-	-
aus3	CCM2408	-14.65	134.78	NT: Ngukurr site 1	MG656521	-	-	-	-	-	-	-	-
aus3	CCM2573	-15.32	135.34	NT: Cox Rvr area, Limmen NP	MG656522	-	-	-	-	-	-	-	-
aus3	CCM2575	-15.32	135.34	NT: Cox Rvr area, Limmen NP	MG656523	-	-	-	-	-	-	-	-
aus3	CCM2576	-15.32	135.34	NT: Cox Rvr area, Limmen NP	MG656524	-	-	-	-	-	-	-	-
aus3	CCM3734	-13.89	136.51	NT: Groote Eylandt	MG656525	MG656672	MG656712	MG656752	MG656905	MG656790	MG656831	MG656946	MG656872
aus3	CCM6510	-13.16	134.85	NT: Emu Springs	MG656526	-	-	-	-	-	-	-	-
aus3	CCM6511	-13.16	134.85	NT: Emu Springs	MG656527	-	-	-	-	-	-	-	-
aus3	CCM6512	-13.16	134.85	NT: Emu Springs	MG656528	-	-	-	-	-	-	-	-
aus3	CCM6513	-13.16	134.85	NT: Emu Springs	MG656529	-	-	-	-	-	-	-	-
aus3	CCM6516	-13.16	134.85	NT: Emu Springs	MG656530	-	-	-	-	-	-	-	-
aus3	CCM6554	-12.08	136.29	NT: Mata Mata Rocks	MG656531	-	-	-	-	-	-	-	-
aus3	CCM6555	-12.08	136.29	NT: Mata Mata Rocks	MG656532	-	-	-	-	-	-	-	-
aus3	CCM6595	-12.08	136.29	NT: Mata Mata Rocks	MG656533	-	-	-	-	-	-	-	-

aus3	CCM6647	-12.05	136.32	NT: Gikal camp	MG656534	-	-	-	-	-	-	-	-
aus3	YMR72	-13.90	135.09	NT: Washaway Creek, Parson's Rng	MG656535	-	-	-	-	-	-	-	-
aus3	YMR85	-13.64	135.18	NT: Parson's Rng Remote Hilltop	MG656536	-	-	-	-	-	-	-	-
aus3	YMR94	-14.09	135.02	NT: Phelp Rvr Xing, Parson's Rng	MG656537	-	-	-	-	-	-	-	-
aus4	NTMR21309	-18.60	138.13	QLD: Musselbrook Reservoir	MG656538	MG656673	MG656713	MG656753	MG656906	MG656791	MG656832	MG656947	MG656873
aus4	NTMR21310	-18.60	138.13	QLD: Musselbrook Reservoir	MG656539	MG656674	MG656714	MG656754	MG656907	MG656792	MG656833	MG656948	MG656874
aus4	NTMR21311	-18.60	138.13	QLD: Musselbrook Reservoir	KJ025207	-	-	-	-	-	-	-	-
aus4	CCM0240	-19.72	139.39	QLD: Mount Gordon	MG656540	MG656675	MG656715	MG656755	MG656908	MG656793	MG656834	MG656949	MG656875
aus4	CCM0244	-19.75	139.38	QLD: Gunpowder Camp/Ridge	MG656541	-	-	-	-	-	-	-	-
aus4	CCM0247	-20.60	139.68	QLD: West Leichardt Camp Escarp	MG656542	-	-	-	-	-	-	-	-
aus4	CCM0318	-18.73	138.50	QLD: Spotlighting On Constance Rng	MG656543	MG656676	MG656716	MG656756	MG656909	MG656794	MG656835	MG656950	-
aus4	CCM0322	-18.09	138.30	QLD: Bowthorn Stn Tip	KX815579	MG656677	MG656717	MG656757	MG656910	MG656795	MG656836	MG656951	-
aus4	CCM0345	-17.88	138.28	QLD: Kingfisher Campground	KX815580	MG656678	MG656718	MG656758	MG656911	MG656796	MG656837	MG656952	-
aus4	CCM0438	-16.71	136.20	NT: Massacre Hill Campsite	MG656544	MG656679	MG656719	MG656759	MG656912	MG656797	MG656838	MG656953	MG656876
aus4	CCM3563	-16.81	137.25	NT: Surprise Pungalina	MG656545	-	-	-	-	-	-	-	-
aus4	CCM3574	-16.69	137.42	NT: Tetradonta Pungalina	MG656546	-	-	-	-	-	-	-	-
aus4	CCM3576	-16.73	137.42	NT: Ferrug Pungalina	MG656547	-	-	-	-	-	-	-	-
aus4	CCM6419	-17.85	137.42	NT: China Wall, Wall Grg	MG656548	-	-	-	-	-	-	-	-

***Gehyra borroloola***

borr1	NTMR20518	-16.78	135.75	NT: McArthur Rvr Bridge	MG656549	MG656680	MG656720	MG656760	MG656913	MG656798	MG656839	MG656954	MG656877
borr1	NTMR22623	-15.31	135.34	NT: Long Billabong Roper Rvr	KJ025220	-	-	-	-	-	-	-	-
borr1	NTMR22627	-15.31	135.34	NT: Long Billabong Roper Rvr	MG656550	-	-	-	-	-	-	-	-
borr1	NTMR35149	-16.71	135.73	NT: Tablelands Hwy, near Cape Crawford	MG656551	-	-	-	-	-	-	-	-
borr1	NTMR35165	-16.71	135.73	NT: Tablelands Hwy, near Cape Crawford	MG656552	-	-	-	-	-	-	-	-
borr1	SAMR34183	-16.67	135.85	NT: McArthur Rvr Stn	GQ257755	-	-	-	-	-	-	-	-
borr1	SAMR34185	-16.67	135.85	NT: McArthur Rvr Stn	MG656553	-	-	-	-	-	-	-	-
borr1	SAMR34186	-16.67	135.85	NT: McArthur Rvr Stn	KJ025223	-	-	-	-	-	-	-	-
borr1	SAMR34187	-16.67	135.85	NT: McArthur Rvr Stn	MG656554	-	-	-	-	-	-	-	-
borr1	SAMR34201	-16.67	135.85	NT: McArthur Rvr Stn	KJ025224	-	-	-	-	-	-	-	-
borr1	ABTC06718	-16.73	135.39	NT: 37k W Balbarini	MG656555	-	-	-	-	-	-	-	-
borr1	CCM0377	-16.64	135.85	NT: McArthur Rvr Stn Campsite	MG656556	-	-	-	-	-	-	-	-
borr1	CCM0378	-16.64	135.85	NT: McArthur Rvr Stn Campsite	MG656557	-	-	-	-	-	-	-	-
borr1	CCM0386	-16.64	135.85	NT: McArthur Rvr Stn Campsite	MG656558	-	-	-	-	-	-	-	-
borr1	CCM0387	-16.64	135.85	NT: McArthur Rvr Stn Campsite	MG656559	MG656681	MG656721	MG656761	MG656914	MG656799	MG656840	MG656955	-

borr1	CCM0401	-16.64	135.85	NT: McArthur Rvr Stn Campsite	MG656560	-	-	-	-	-	-	-	-
borr1	CCM0402	-16.64	135.85	NT: McArthur Rvr Stn Campsite	MG656561	-	-	-	-	-	-	-	-
borr1	CCM0403	-16.64	135.85	NT: McArthur Rvr Stn Campsite	MG656562	-	-	-	-	-	-	-	-
borr1	CCM0419	-16.71	136.20	NT: Massacre Hill Campsite	MG656563	-	-	-	-	-	-	-	-
borr1	CCM0420	-16.71	136.20	NT: Massacre Hill Campsite	MG656564	-	-	-	-	-	-	-	-
borr1	CCM0434	-16.71	136.20	NT: Massacre Hill Campsite	MG656565	-	-	-	-	-	-	-	-
borr1	CCM0435	-16.71	136.20	NT: Massacre Hill Campsite	MG656566	MG656682	MG656722	MG656762	MG656915	MG656800	MG656841	MG656956	MG656878
borr1	CCM2480	-15.63	135.46	NT: Butterfly Springs rocks	MG656567	-	-	-	-	-	-	-	-
borr1	CCM2482	-15.63	135.46	NT: Butterfly Springs rocks	MG656568	-	-	-	-	-	-	-	-
borr1	CCM2577	-15.47	135.39	NT: Limmen Rvr north	MG656569	-	-	-	-	-	-	-	-
borr1	CCM2616	-15.63	135.46	NT: Southern Lost City, Limmen NP	MG656570	-	-	-	-	-	-	-	-
borr1	CCM2619	-15.68	135.62	NT: Fossil Fern, Lorella Springs Stn	MG656571	-	-	-	-	-	-	-	-
borr1	CCM2671	-16.27	136.08	NT: Caranbirini Conservation reserve	MG656572	-	-	-	-	-	-	-	-
borr1	CCM2676	-15.71	135.75	QLD: Nudie Hot Springs, Lorella Springs Stn	MG656573	-	-	-	-	-	-	-	-
borr1	CCM6378	-16.97	135.80	NT: Mallapunya Stn sandstone	MG656574	-	-	-	-	-	-	-	-
borr2	CCM2643	-15.42	135.71	NT: Yiyinti Rng, Lorella Springs	MG656575	MG656683	MG656723	MG656763	MG656916	MG656801	MG656842	MG656957	MG656879
borr2	CCM2644	-15.42	135.71	NT: Yiyinti Rng, Lorella Springs	MG656576	MG656684	MG656724	MG656764	MG656917	MG656802	MG656843	MG656958	MG656880
borr2	CCM2645	-15.42	135.71	NT: Yiyinti Rng, Lorella Springs	MG656577	-	-	-	-	-	-	-	-
borr2	CCM2646	-15.42	135.71	NT: Yiyinti Rng, Lorella Springs	MG656578	-	-	-	-	-	-	-	-
borr2	CCM2688	-15.42	135.71	NT: Yiyinti Rng, Lorella Springs	MG656579	MG656685	MG656725	MG656765	MG656918	MG656803	MG656844	MG656959	MG656881
borr2	CCM2689	-15.42	135.71	NT: Yiyinti Rng, Lorella Springs	MG656580	MG656686	MG656726	MG656766	MG656919	MG656804	MG656845	MG656960	MG656882

***Gehyra groote* sp.**

Groote_sp	CCM3733	-13.89	136.51	NT: Groote Eylandt	MG656661	MG656702	MG656742	MG656780	MG656935	MG656820	MG656861	MG656976	MG656894
-----------	---------	--------	--------	--------------------	----------	----------	----------	----------	----------	----------	----------	----------	----------

***Gehyra robusta***

rob1	NTMR21302	-18.60	138.13	QLD: Musselbrook Reservoir	KJ025231	-	-	-	-	-	-	-	-
rob1	NTMR21486	-18.60	138.13	QLD: Musselbrook Reservoir	MG656581	-	-	-	-	-	-	-	-
rob1	NTMR21488	-18.60	138.13	QLD: Musselbrook Reservoir	KJ025232	MG656687	MG656727	MG656767	MG656920	MG656805	MG656846	MG656961	MG656883
rob1	CCM0233	-18.70	138.49	QLD: Lawn Hill Island Stacks	MG656582	-	-	-	-	-	-	-	-
rob1	CCM0263	-18.70	138.49	QLD: Lawn Hill Island Stacks	MG656583	MG656688	MG656728	MG656768	MG656921	MG656806	MG656847	MG656962	MG656884
rob1	CCM0264	-18.70	138.49	QLD: Lawn Hill Island Stacks	MG656584	-	-	-	-	-	-	-	-
rob1	CCM0275	-18.70	138.48	QLD: Lawn Hill Duwadarri Lookout	MG656585	-	-	-	-	-	-	-	-
rob1	CCM0277	-18.70	138.48	QLD: Lawn Hill Duwadarri Lookout	MG656586	-	-	-	-	-	-	-	-
rob1	CCM0311	-18.73	138.50	QLD: Constance Rng	MG656587	-	-	-	-	-	-	-	-
rob1	CCM0325	-17.81	138.28	QLD: Kingfisher Spotlighting Rocks	MG656588	-	-	-	-	-	-	-	-



rob1	CCM0327	-17.81	138.28	QLD: Kingfisher Spotlighting Rocks	MG656589	-	-	-	-	-	-	-	-
rob1	CCM0328	-17.81	138.28	QLD: Kingfisher Spotlighting Rocks	MG656590	MG656689	MG656729	MG656769	MG656922	MG656807	MG656848	MG656963	-
rob1	CCM0329	-17.81	138.28	QLD: Kingfisher Spotlighting Rocks	MG656591	-	-	-	-	-	-	-	-
rob1	CCM0330	-17.81	138.28	QLD: Kingfisher Spotlighting Rocks	MG656592	-	-	-	-	-	-	-	-
rob1	CCM0343	-17.81	138.28	QLD: Kingfisher Spotlighting Rocks	MG656593	-	-	-	-	-	-	-	-
rob1	CCM0344	-17.81	138.28	QLD: Kingfisher Spotlighting Rocks	MG656594	-	-	-	-	-	-	-	-
rob1	CCM0407	-17.23	137.33	NT: Calvert Hills Hs	MG656595	MG656690	MG656730	MG656770	MG656923	MG656808	MG656849	MG656964	MG656885
rob1	CCM5058	-17.45	138.34	NT: 2km west of Hells Gate	MG656596	-	-	-	-	-	-	-	-
rob1	CCM6391	-17.90	137.52	NT: Lancewood	MG656597	-	-	-	-	-	-	-	-
rob1	CCM6404	-17.88	137.49	NT: Spring Creek	MG656598	-	-	-	-	-	-	-	-
rob1	CCM6424	-17.85	137.42	NT: China Wall, Wall Grg top	MG656599	-	-	-	-	-	-	-	-
rob1	CCM6425	-17.85	137.42	NT: China Wall, Wall Grg top	MG656600	-	-	-	-	-	-	-	-
rob1	CCM6452	-17.98	137.47	NT: Caveyard	MG656601	-	-	-	-	-	-	-	-
rob1	CCM6464	-17.90	137.52	NT: Lancewood	MG656602	-	-	-	-	-	-	-	-
rob1	CCM6465	-17.90	137.52	NT: Lancewood	MG656603	-	-	-	-	-	-	-	-
rob1	CCM6488	-17.35	137.16	NT: 60km Calvert Rd from Benmara Stn	MG656604	-	-	-	-	-	-	-	-
rob2	SAMR34206	-17.18	137.77	NT: 25k W Wollogorang Stn	KJ025230	MG656691	MG656731	MG656771	MG656924	MG656809	MG656850	MG656965	MG656886
rob2	CCM0366	-17.20	137.43	NT: Calvert Hills Campsite	MG656605	MG656692	MG656732	MG656772	MG656925	MG656810	MG656851	MG656966	-
rob2	CCM2698	-17.17	137.71	NT: Echo Grg camp rocks	MG656606	-	-	-	-	-	-	-	-
rob2	CCM2699	-17.17	137.71	NT: Echo Grg camp rocks	MG656607	-	-	-	-	-	-	-	-
rob2	CCM2712	-17.17	137.71	NT: Echo Grg camp rocks	MG656608	-	-	-	-	-	-	-	-
rob2	CCM2713	-17.17	137.71	NT: Echo Grg camp rocks	MG656609	-	-	-	-	-	-	-	-
rob2	CCM3564	-16.81	137.25	NT: Surprise04 Pungalina	MG656610	-	-	-	-	-	-	-	-
rob2	CCM3566	-16.81	137.25	NT: Surprise04 Pungalina	MG656611	-	-	-	-	-	-	-	-
rob2	CCM3578	-16.82	137.55	NT: SEL12 Pungalina	MG656612	-	-	-	-	-	-	-	-
rob2	CCM3579	-16.82	137.55	NT: SEL12 Pungalina	MG656613	-	-	-	-	-	-	-	-
rob3	SAMR129370	-19.02	138.74	QLD: Gregory Rvr, Rvrsleigh Stn	MG656614	-	-	-	-	-	-	-	-
rob3	CCM0271	-18.99	138.69	QLD: 40k South Rvrsleigh Rd	MG656615	-	-	-	-	-	-	-	-
rob3	CCM0272	-18.99	138.69	QLD: 40k South Rvrsleigh Rd	MG656616	-	-	-	-	-	-	-	-
rob3	CCM0273	-18.99	138.69	QLD: 40k South Rvrsleigh Rd	MG656617	-	-	-	-	-	-	-	-
rob3	CCM0289	-18.99	138.69	QLD: 40k South Rvrsleigh Rd	MG656618	MG656693	MG656733	MG656773	MG656926	MG656811	MG656852	MG656967	MG656887
rob3	CCM0290	-18.99	138.69	QLD: 40k South Rvrsleigh Rd	MG656619	MG656694	MG656734	-	MG656927	MG656812	MG656853	MG656968	MG656888
rob3	CCM0292	-18.99	138.69	QLD: 40k South Rvrsleigh Rd	MG656620	MG656695	MG656735	MG656774	MG656928	MG656813	MG656854	MG656969	-
rob3	CCM5063	-18.92	139.02	NT: South of Kumarga on Camooweal Rd	MG656621	-	-	-	-	-	-	-	-

rob4	CCM0279	-18.58	138.58	QLD: Lawn Hill Stn Tip	MG656622	-	-	-	-	-	-	-	-	-
rob4	CCM0280	-18.58	138.58	QLD: Lawn Hill Stn Tip	MG656623	-	-	-	-	-	-	-	-	-
rob4	CCM0281	-18.58	138.58	QLD: Lawn Hill Stn Tip	MG656624	MG656696	MG656736	MG656775	MG656929	MG656814	MG656855	MG656970	MG656889	
rob5	NTMR25748	-20.73	139.79	QLD: Chinaman's WH, Mount Isa	MG656625	-	-	-	-	-	-	-	-	-
rob5	SAMR34220	-20.72	139.55	QLD: 7k E Mount Isa	KJ025227	-	-	-	-	-	-	-	-	-
rob5	SAMR34222	-20.72	139.55	QLD: 7k E Mount Isa	KJ025228	-	-	-	-	-	-	-	-	-
rob5	SAMR34227	-20.72	139.55	QLD: 7k E Mount Isa	KJ025226	-	-	-	-	-	-	-	-	-
rob5	SAMR42699	-20.12	139.72	QLD: Lake Julius	KJ025225	MG656697	MG656737	MG656776	MG656930	MG656815	MG656856	MG656971	KJ025394	
rob5	SAMR54452	-20.72	139.55	QLD: 7k E Mount Isa	KJ025229	-	-	-	-	-	-	-	-	-
rob5	SAMR55286	-21.76	139.92	QLD: The Monument	MG656626	MG656698	MG656738	MG656777	MG656931	MG656816	MG656857	MG656972	MG656890	
rob5	SAMR55287	-21.76	139.92	QLD: The Monument	MG656627	-	-	-	-	-	-	-	-	-
rob5	ABTC06688	-20.72	140.47	QLD: 4k W Cloncurry	MG656628	-	-	-	-	-	-	-	-	-
rob5	ABTC06689	-20.13	139.88	QLD: 36k E Mt Isa	MG656629	-	-	-	-	-	-	-	-	-
rob5	ABTC06690	-20.13	141.20	QLD: 17k S Dismal Xing	MG656630	-	-	-	-	-	-	-	-	-
rob5	ABTC06691	-20.13	139.88	QLD: 36k E Mt Isa	MG656631	-	-	-	-	-	-	-	-	-
rob5	ABTC06713	-20.13	141.20	QLD: 17k S Dismal Xing	MG656632	-	-	-	-	-	-	-	-	-
rob5	ABTC06715	-21.68	139.49	QLD: 5k NW Dajarra	MG656633	-	-	-	-	-	-	-	-	-
rob5	ABTC06716	-21.67	139.51	QLD: 5k N Dajarra	MG656634	-	-	-	-	-	-	-	-	-
rob5	ABTC06719	-21.70	139.51	QLD: S Dajarra	MG656635	-	-	-	-	-	-	-	-	-
rob5	ABTC113642	-20.88	139.46	QLD: Sybella Creek on Dajarra Rd, 17.2k S Mt Isa	MG656636	-	-	-	-	-	-	-	-	-
rob5	ABTC113643	-20.88	139.46	QLD: Sybella Creek on Dajarra Rd, 17.2k S Mt Isa	MG656637	-	-	-	-	-	-	-	-	-
rob5	CCM0145	-21.19	139.76	QLD: Camp Bushy Park	MG656638	-	-	-	-	-	-	-	-	-
rob5	CCM0152	-21.19	139.76	QLD: Camp Bushy Park	MG656639	-	-	-	-	-	-	-	-	-
rob5	CCM0153	-21.19	139.76	QLD: Camp Bushy Park	MG656640	-	-	-	-	-	-	-	-	-
rob5	CCM0154	-21.19	139.76	QLD: Camp Bushy Park	MG656641	-	-	-	-	-	-	-	-	-
rob5	CCM0155	-21.19	139.76	QLD: Camp Bushy Park	MG656642	-	-	-	-	-	-	-	-	-
rob5	CCM0156	-21.19	139.76	QLD: Camp Bushy Park	MG656643	-	-	-	-	-	-	-	-	-
rob5	CCM0173	-21.19	139.76	QLD: Camp Bushy Park	MG656644	-	-	-	-	-	-	-	-	-
rob5	CCM0174	-21.19	139.76	QLD: Camp Bushy Park	MG656645	MG656699	MG656739	-	MG656932	MG656817	MG656858	MG656973	MG656891	
rob5	CCM0186	-20.68	139.50	QLD: Moondarra Caravan Park	MG656646	-	-	-	-	-	-	-	-	-
rob5	CCM0187	-20.68	139.50	QLD: Moondarra Caravan Park	MG656647	-	-	-	-	-	-	-	-	-
rob5	CCM0188	-20.68	139.50	QLD: Moondarra Caravan Park	MG656648	MG656700	MG656740	MG656778	MG656933	MG656818	MG656859	MG656974	MG656892	
rob5	CCM0189	-20.68	139.50	QLD: Moondarra Caravan Park	MG656649	-	-	-	-	-	-	-	-	-
rob5	CCM0201	-20.60	139.68	QLD: West Leichardt Camp Escarp	MG656650	-	-	-	-	-	-	-	-	-

rob5	CCM0202	-20.60	139.68	QLD: West Leichardt Camp Escarp	MG656651	-	-	-	-	-	-	-	-
rob5	CCM0203	-20.60	139.68	QLD: West Leichardt Camp Escarp	MG656652	-	-	-	-	-	-	-	-
rob5	CCM0204	-20.60	139.68	QLD: West Leichardt Camp Escarp	MG656653	-	-	-	-	-	-	-	-
rob5	CCM0205	-20.60	139.68	QLD: West Leichardt Camp Escarp	MG656654	-	-	-	-	-	-	-	-
rob5	CCM0206	-20.60	139.68	QLD: West Leichardt Camp Escarp	MG656655	-	-	-	-	-	-	-	-
rob5	CCM0207	-20.60	139.68	QLD: West Leichardt Camp Escarp	MG656656	-	-	-	-	-	-	-	-
rob5	CCM0238	-19.72	139.39	QLD: Mount Gordon	MG656657	MG656701	MG656741	MG656779	MG656934	MG656819	MG656860	MG656975	MG656893
rob5	CCM0239	-19.72	139.39	QLD: Mount Gordon	MG656658	-	-	-	-	-	-	-	-
rob5	CCM0249	-20.60	139.68	QLD: West Leichardt Camp Escarp	MG656659	-	-	-	-	-	-	-	-
rob5	CCM0250	-20.60	139.68	QLD: West Leichardt Camp Escarp	MG656660	-	-	-	-	-	-	-	-

Tissue sources: ABTC, Australian Biological Tissue Collection at South Australia Museum; AMS, Australia Museum; NTM, Northern Territory Museum; SAMA, South Australia Museum; WAM, Western Australia Museum; CCM, CMNT, H#, PMO, TR, W#, YMR – field collections from collaborators (tissues presently lodged in various associated institutions).

**Table S2. Information on genetic sequencing conducted for the *Gehyra australis* species-group**

Details of loci sequenced, primers and protocols used in this study.

Exon/Locus	Exon	% similarity between <i>G. oceanica</i> and <i>G. nana</i>	Size (bp)	Annealing Temp (T <sub>A</sub> , °C)	Primers (5'-3')	Primer Source
<b>Mitochondrial</b>						
<u>NADH dehydrogenase-2 (ND2)</u>						
L4437			1136	55	F: AAGCTTTCGGGCCCCATACC	Macey et al. (1997)
H5934			(flanking trna)		R: AGRGTGCCAATGTCTTTGTGRT	
L4437				60	F: AAGCTTTCGGGCCCCATACC	Macey et al. (1997)
M1123R					R: GCTTAATTAAGTGYTGAGTTGC	Sistrom et al. (2012)
<b>Nuclear</b>						
<u>Brain-Derived Neurotrophic Factor (BDNF)</u>						
BDNF_f			670	55	F: GACCATCCTTTTCCTKACTATGGTTATT TCATACTT	Townsend et al. (2008)
BDNF_r					R: CTATCTCCCCTTTAATGGTCAGTGT ACAAAC	
<u>ENSACAP00000000687</u>	1	93.60%	957	52	F: ATGCTGACTTCAACCGGATT R: AACTGGAAGACTCGGACTCT	Pratt – This Study
<u>ENSACAP000000004832</u>	11	95.70%	708	52	F: GCAGCCGAGGAATGAGAAG R: CAGTACAGGGCAAAGCATT	Pratt – This Study
<u>ENSACAP000000010290</u>	5	95.90%	932	52	F: GGCTTCAGGAACAACAGGG R: CGCACAAAATTATCCCCAGC	Pratt – This Study
<u>ENSACAP000000014121</u>	2	93.8	740	52	F: CACCGCGTCCAACAATGA R: TGCCTAAATTGCCGTTCTCT	Pratt – This Study
<u>ENSACAP000000017840</u>	1	92.2	619	52	F: ACGAAATAGTGGTGGTGGC R: ACAAAGTCGTAGCGCAAAG	Pratt – This Study
<u>ENSACAP000000022560</u>	1	91.3	498	52	F: ATGGAGGGCTTTCGAGAAAT R: GATGATGTTCTCCTCTGCGA	Pratt – This Study
<u>Prolactin receptor (PRLR)</u>						
prlr-F1			532	55	F: GACARYGARGACCAGCAACTRATGCC	Townsend et al. (2008)
prlr-R3					R: GACYTTGTGRACTTCYACRTAATCCAT	

**Table S3. Partition and model schemes for phylogenetic analyses of molecular data**

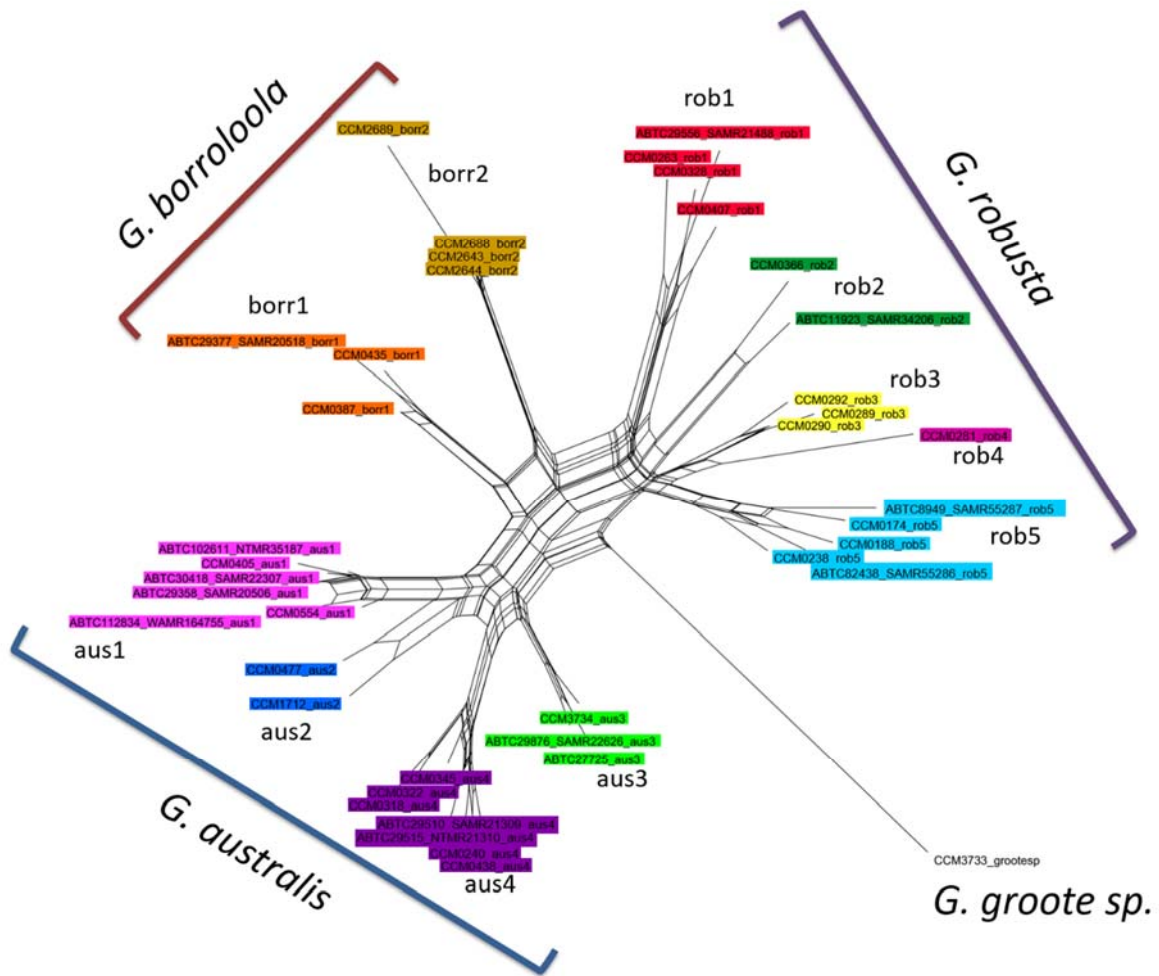
Optimal partition and model schemes used in this study for each dataset and analysis as ranked by Bayesian Information Criterion (BIC) scores.

Optimal partition and model scheme			
Dataset	RAxML	MrBayes	*BEAST
mtDNA (ND2)	ND2_1 (GTR+G); ND2_2 (GTR+G); ND2_3 (GTR+G)	ND2_1 (HKY+G); ND2_2 (GTR+G); ND2_3 (GTR+G)	
nuDNA (eight loci)	BDNF_1 BDNF_2 BDNF_3 CAP00687_1 CAP00687_2 CAP14121_1 CAP14121_2 CAP04832_1 CAP04832_2 CAP10290_2 CAP17840_1 CAP17840_2 CAP22560_1 CAP22560_2 PRLR_2 (GTR+I+G); CAP00687_3 CAP14121_3 CAP04832_3 CAP10290_1 CAP10290_3 CAP17840_3 CAP22560_3 PRLR_1 PRLR_3 (GTR+I+G)	BDNF_1 BDNF_2 CAP14121_2 CAP22560_1 (JC); BDNF_3 CAP00687_1 CAP00687_2 CAP14121_1 CAP10290_2 CAP17840_2 CAP22560_2 (HKY+I); CAP00687_3 CAP14121_3 CAP04832_3 CAP10290_3 CAP17840_3 CAP22560_3 PRLR_3 (HKY+I+G); CAP04832_1 CAP04832_2 CAP10290_1 PRLR_1 PRLR_2 (HKY+I); CAP17840_1 (JC)	BDNF_1 BDNF_2 BDNF3 (JC)
			CAP00687_1 CAP00687_2 CAP00687_3 (HKY+I)
			CAP04832_1 CAP04832_2 (HKY); CAP04832_3 (TN93+I)
			CAP10290_1 CAP10290_3 (HKY+I); CAP10290_2 (JC)
			CAP14121_1 CAP14121_2 (JC); CAP14121_3 (HKY)
			CAP17840_1 (JC); CAP17840_2 (HKY); CAP17840_3 (HKY)
			CAP22560_1 CAP22560_2 (JC); CAP22560 (HKY+I)
PRLR_1 PRLR_2 PRLR_3 (HKY+I)			

**Table S4. Mitochondrial diversity of the *Gehyra australis* species-group lineages.** Taxa and lineages shaded in grey have distributions restricted to the ranges of the Gulf Fall Uplands (GFU) and Mount Isa Inlier (MII). The one significant signature ( $P < 0.02$ ) of population expansion is indicated by bold numbers.

Clade	<i>n</i>	<i>n</i> (lineages)	$\pi$	<i>Dxy</i>	Tajima's <i>D</i>	<i>P<sub>D</sub></i>	Fu's <i>F<sub>s</sub></i>	<i>P<sub>F<sub>s</sub></sub></i>	<i>R<sub>2</sub></i>	<i>P<sub>R<sub>2</sub></sub></i>
<i>Gehyra australis</i>	183	4	0.091	0.161	0.490	0.770	-14.046	0.057	0.125	0.940
<i>Gehyra borrooloola</i>	36	2	0.040	0.128	0.691	0.841	5.198	0.943	0.146	0.847
<i>Gehyra robusta</i>	88	5	0.078	0.128	-0.035	0.592	3.440	0.863	0.116	0.805
Lineage										
aus1	92		0.028	0.118	-0.908	0.173	<b>-25.999</b>	<b>0.000</b>	0.073	0.245
aus2	38		0.037	0.112	0.091	0.619	3.580	0.892	0.133	0.794
aus3	39		0.029	0.118	-0.280	0.439	-0.172	0.517	0.108	0.524
aus4	14		0.013	0.112	-0.135	0.488	-0.026	0.455	0.139	0.415
bor1	30		0.019	0.094	0.422	0.708	3.592	0.924	0.135	0.755
bor2	6		0.001	0.094	NA	NA	NA	NA	NA	NA
rob1	26		0.032	0.090	0.571	0.774	3.804	0.921	0.149	0.803
rob2	10		0.020	0.090	0.185	0.638	3.185	0.918	0.175	0.667
rob3	8		0.019	0.102	NA	NA	NA	NA	NA	NA
rob4	3		0.000	0.102	NA	NA	NA	NA	NA	NA
rob5	41		0.014	0.096	-0.886	0.184	-0.875	0.422	0.087	0.219

*n*, number of individuals;  $\pi$ , average Tamura-Nei corrected pairwise divergence between individuals; *Dxy*, average pairwise divergence to nearest relative; *P<sub>D</sub>*, *P<sub>F<sub>s</sub></sub>*, *P<sub>R<sub>2</sub></sub>*, significance test p-values for each statistic written in sub-script; *R<sub>2</sub>*, Ramos-Onsins and Rozas *R<sub>2</sub>* value; NA, value not calculable from < 10 individuals.



**Fig. S1.** Network visualisation of results from the POFA clustering analysis of the nuclear DNA dataset (eight loci) for the *Gehyra australis* species-group.

## References

Macey, J. R., Larson, A., Ananjeva, N. B., Fang, Z., and Papenfuss, T. J. (1997). Two novel gene orders and the role of light-strand replication in the rearrangement of the vertebrate mitochondrial genome. *Molecular Biology and Evolution* **14**, 91-104.

Sistrom, M. J., Edwards, D. L., Donnellan, S. C., and Hutchinson, M. N. (2012). Morphological differentiation correlates with ecological but not with genetic divergence in a *Gehyra* gecko. *Journal of Evolutionary Biology* **25**(4), 647-660.

Townsend, T. M., Alegre, E. R., Kelley, S. T., Wiens, J. J., and Reeder, T. W. (2008). Rapid development of multiple nuclear loci for phylogenetic analysis using genomic resources: An example from squamate reptiles. *Molecular Phylogenetics and Evolution* **47**, 129-142.