

[10.1071/SR24012](https://doi.org/10.1071/SR24012)

Soil Research

Supplementary Material

Spatial variability of soil carbon across a hillslope restoration planting in New Zealand

Molly Katharine D'Ath^A, Katarzyna Sila-Nowicka^{A}, and Luitgard Schwendenmann^A*

^ASchool of Environment, The University of Auckland, Private Bag 92019, Auckland, New Zealand.

*Correspondence to: Katarzyna Sila-Nowicka School of Environment, The University of Auckland, Private Bag 92019, Auckland, New Zealand Email: katarzyna.sila-nowicka@auckland.ac.nz

Supplementary materials:

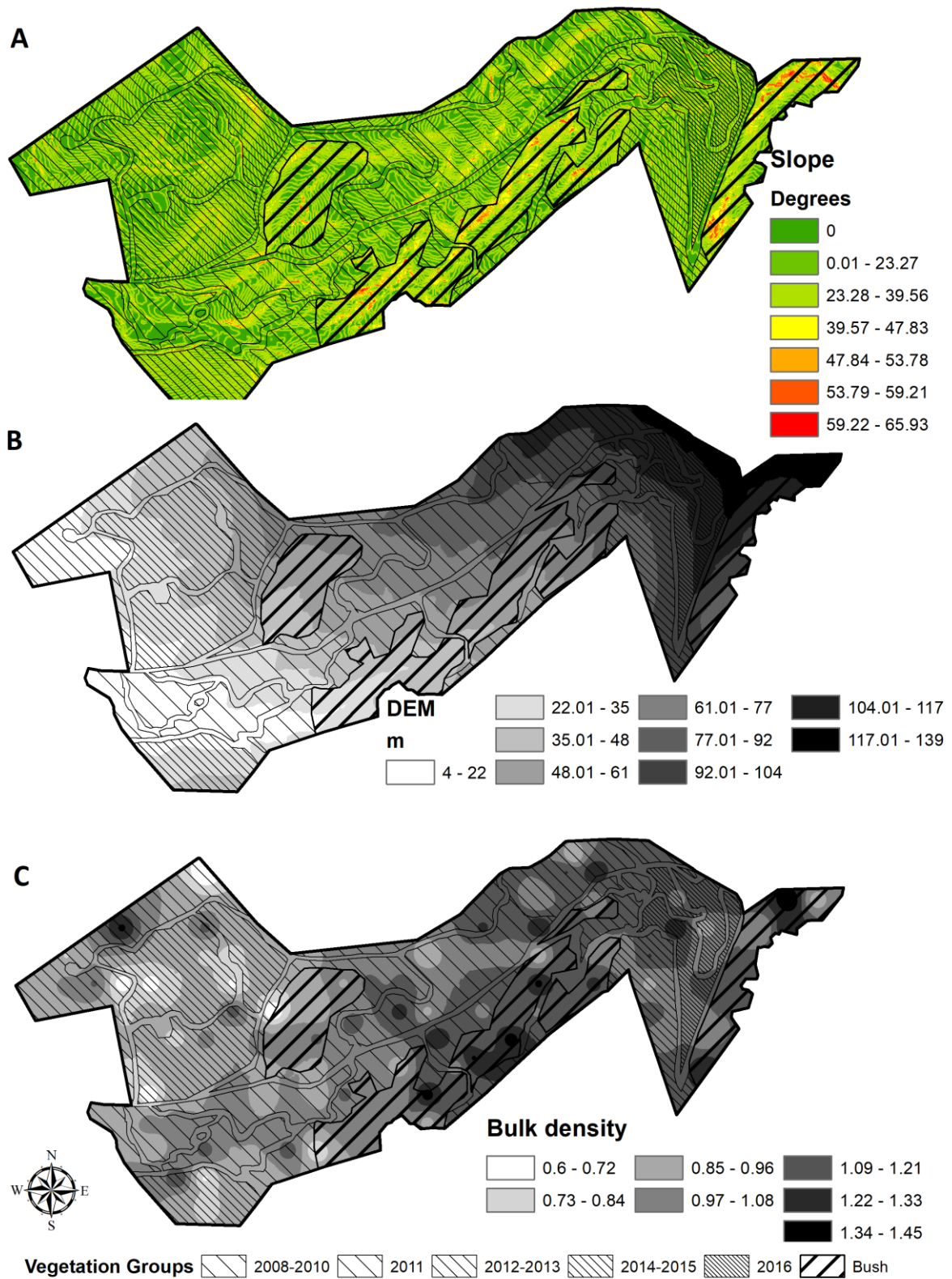


Figure S1. Spatial distribution of a) slope; b) elevation; c) bulk density.

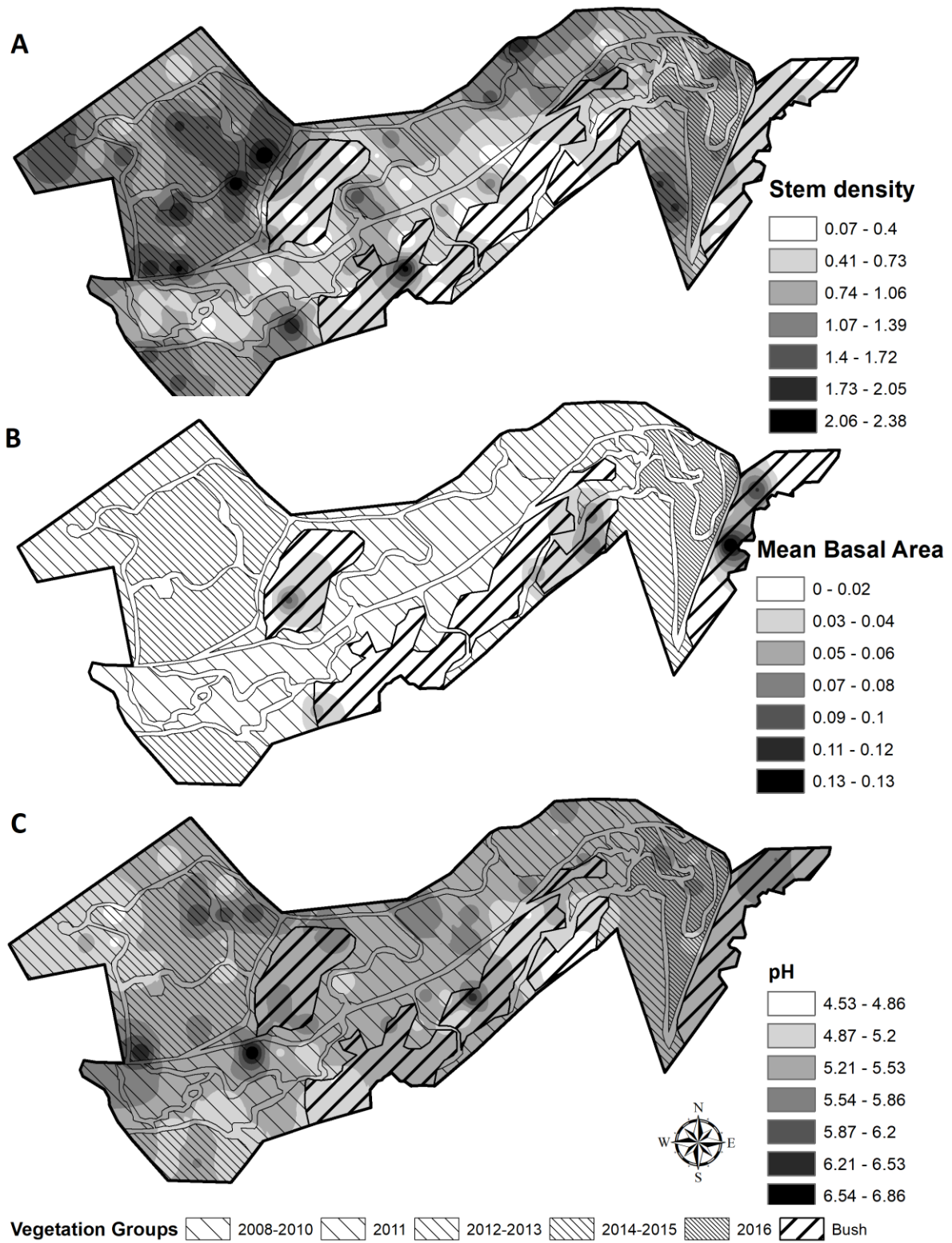


Figure S2. Spatial distribution of a) stem density; b) mean basal area; c) pH.

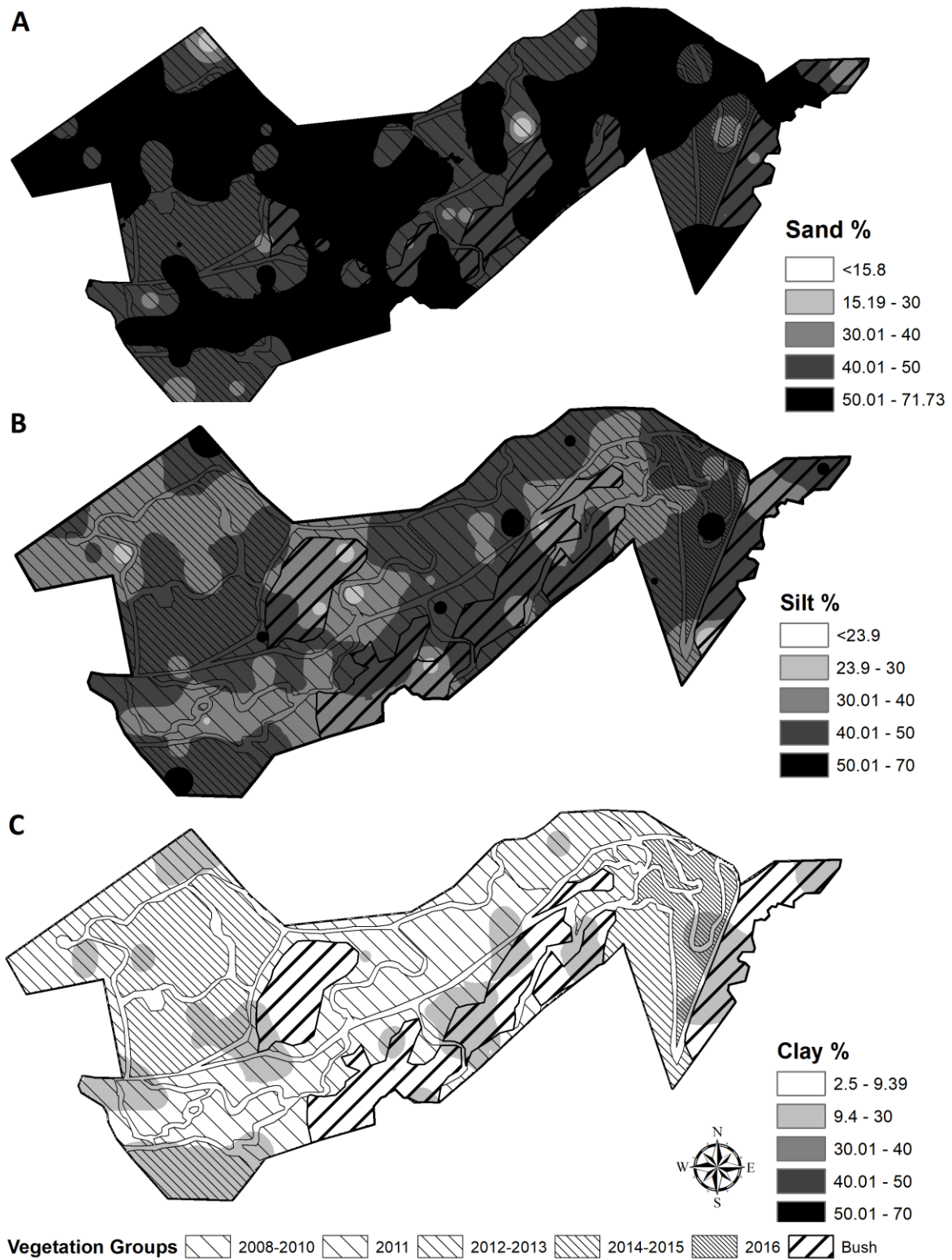


Figure S3. Spatial distribution of a) sand %; b) silt % c) clay %.

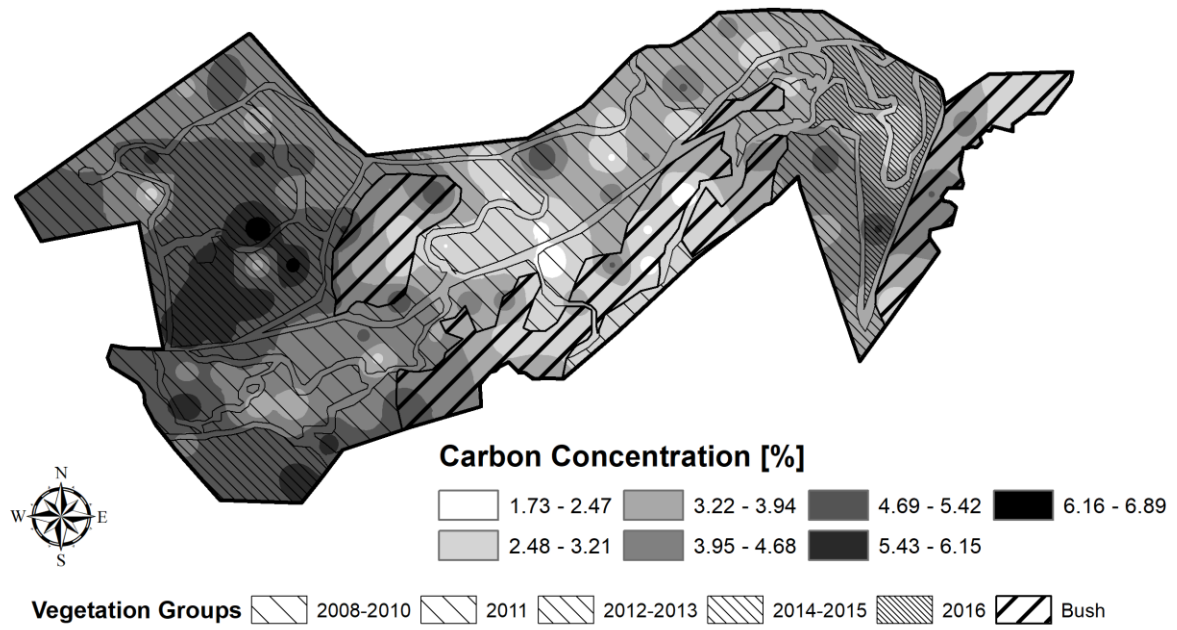


Figure S4. Spatial distribution of carbon concentration [%].