

[10.1071/SR20311](https://doi.org/10.1071/SR20311)

Soil Research

Supplementary Material

Effects of biological agents on soil microbiology, enzyme activity and fruit quality of kiwifruit with root rot

Yongli Ku^A, Guoyi Xu^B, Shaoxin Su^C, and Cuiling Cao^{D,}*

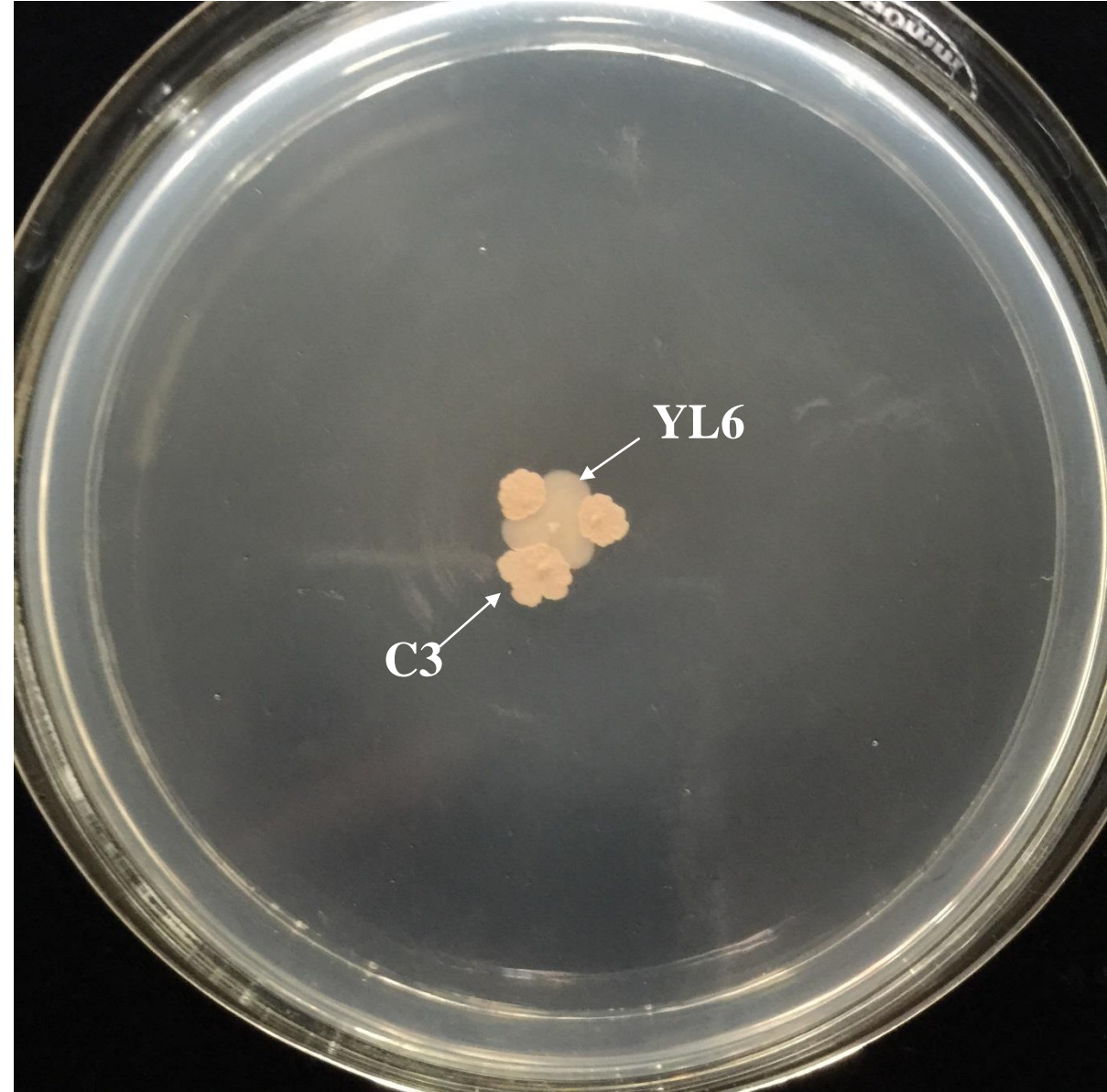
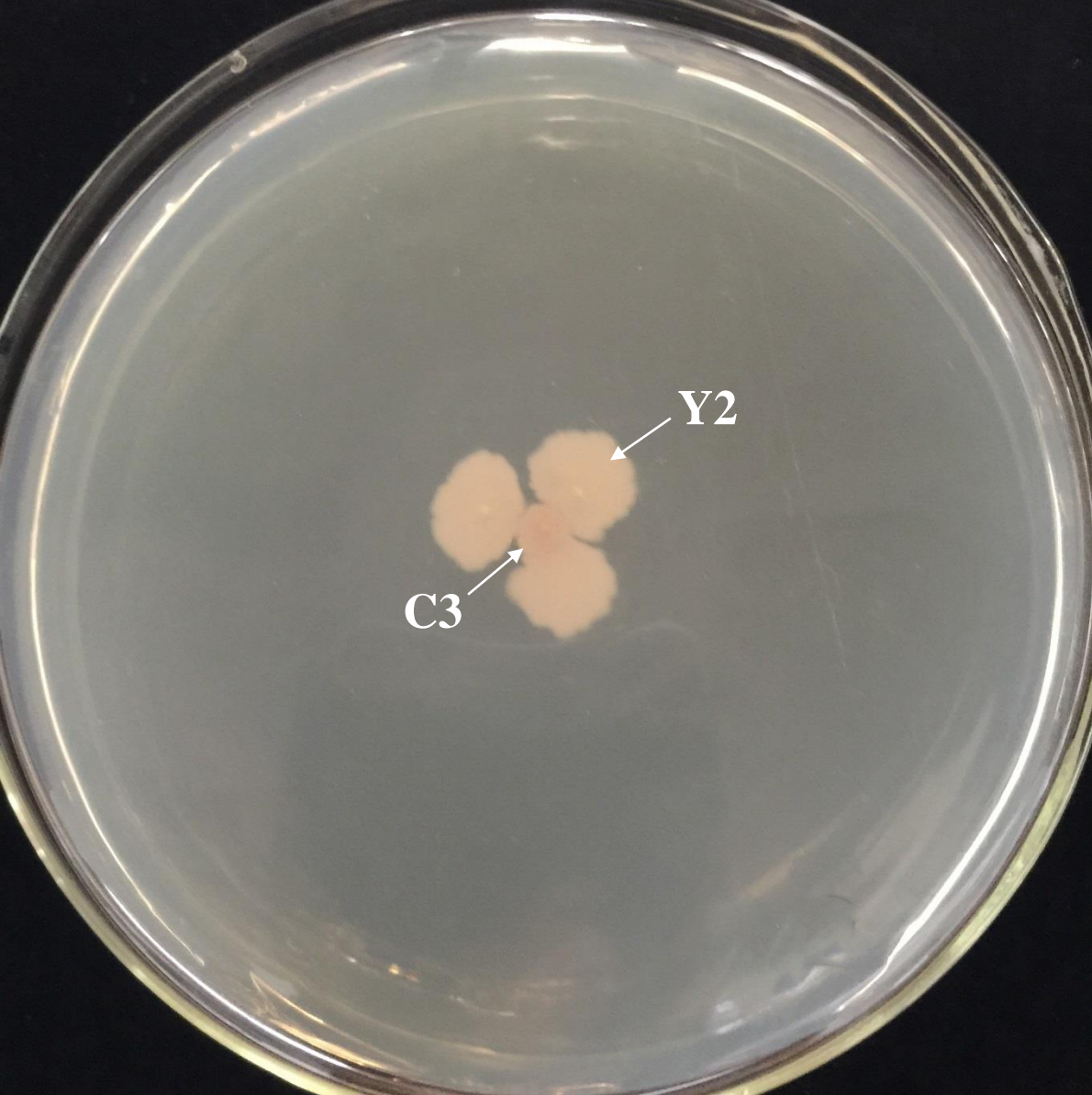
^ACollege of Forestry, Northwest A&F University, Yangling 712100, People's Republic of China.

^BZhengzhou Fruit Research Institute, Chinese Academy of Agricultural Sciences, Zhengzhou 450000, People's Republic of China.

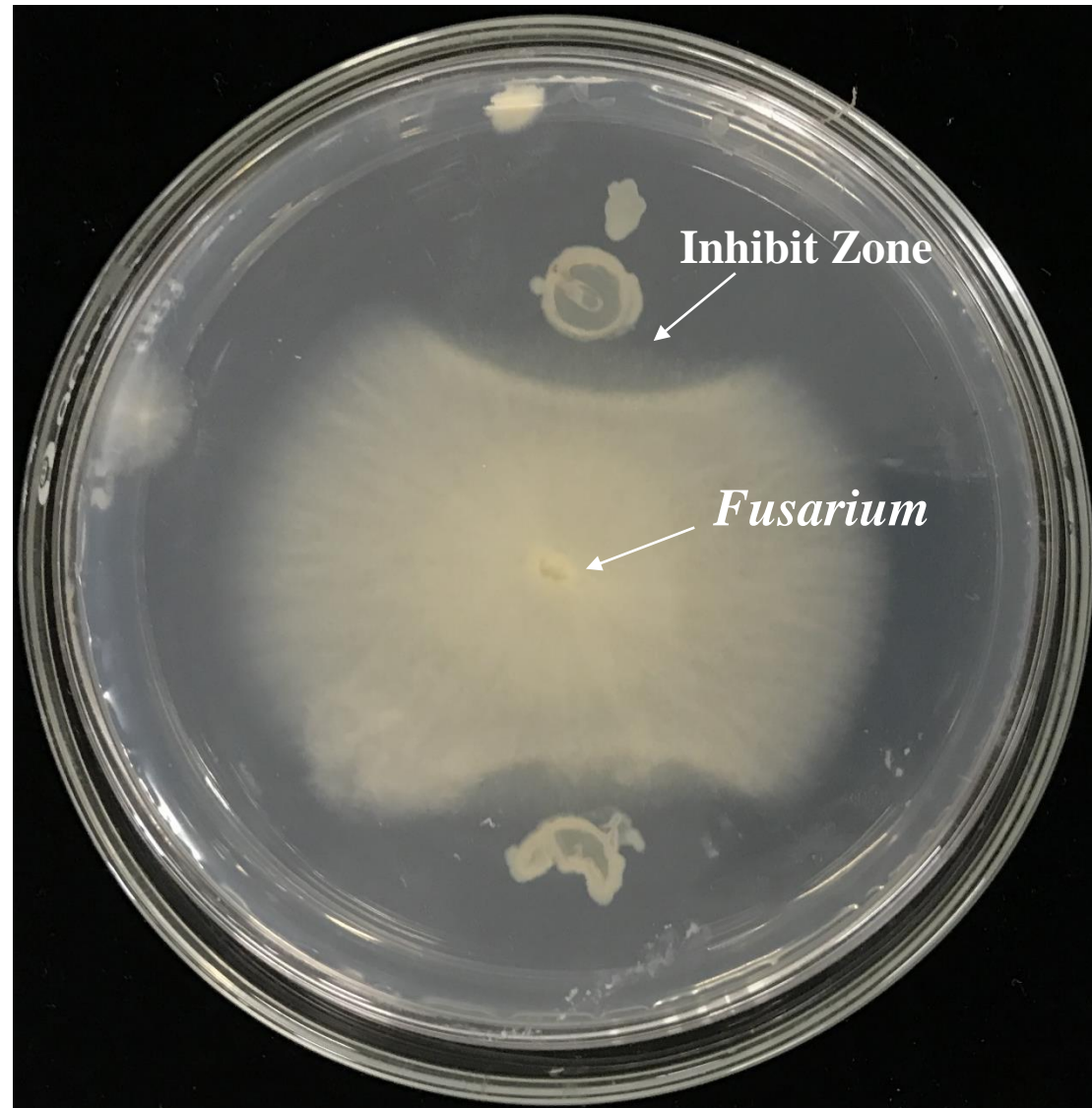
^CCollege of Foreign Language, Shangqiu University, Shangqiu 476000, People's Republic of China.

^DCollege of Life Sciences, Northwest A&F University, Yangling 712100, People's Republic of China.

*Correspondence to: Cuiling Cao College of Life Sciences, Northwest A&F University, Yangling 712100, People's Republic of China Email: cuilingcao@163.com



Supplementary Fig S1. C3 Antagonism Test with Y2 and YL6



Supplementary Fig S2. C3 Antagonism Test with *Fusarium*

Supplementary Table S1. Soil Initial Enzyme Activity

| | Sucrase mg/g/d | Phosphatase mg/g/h | Polyphenol Oxidase mg/g/h | Urease mg/g/d | Protease mg/g/d |
|----|-------------------|-----------------------|---------------------------------|------------------|--------------------|
| HP | 10.142±0.526 | 31.352±0.199 | 0.129±0.005 | 0.345±0.015 | 12.931±0.220 |
| RP | 6.862±0.829 | 26.579±2.273 | 0.119±0.007 | 0.290±0.025 | 8.765±0.129 |

Note: HP meant Healthy kiwifruit trees; RP meant kiwifruit trees. They all were collected at the day when we deployed the experiment on Nov.11 2016.

Supplementary Table S2. Soil Available Nutrients Content before Experiment

| | Total P mg/kg | Availab le P g/kg | Total nitroge n g/kg | Nitrate nitrogen mg/kg | Ammoni um nitrogen mg/kg | Total K g/kg | Availab le K g/kg | Organic Matter g/kg | pH |
|---|------------------|-------------------------|-------------------------------|------------------------------|-----------------------------------|--------------------|-------------------------|---------------------------|---------|
| H | 4.180± | 0.103± | 0.545± | 13.346± | 11.706± | 6.66±0 | 0.168± | 23.82± | 8.41±0. |
| P | 0.67 | 0.01 | 0.04 | 0.19 | 0.38 | .01 | 0.00 | 1.76 | 10 |
| R | 3.677± | 0.110± | 0.512± | 15.012± | 15.857± | 7.90±0 | 0.246± | 37.54± | 7.41±0. |
| P | 1.38 | 0.00 | 0.16 | 0.36 | 0.84 | .58 | 0.01 | 2.51 | 11 |

Note: P meant phosphorus; K meant potassium