

Supplementary Material

Rising incidence of gonorrhoea in Taiwan amid the COVID-19 pandemic: a nationwide surveillance study

Hsing-Yuan Chen^{A,B,#}, Yi-Hsiang Sung^{A,B,#}, Chung-Chu Chen^{C,D,#}, Shun-Long Weng^{E,F}, Bo-Huang Liou^C, Chun-Yan Yeung^{A,B}, Chi-Hone Lien^{A,B}, Chao-Hsu Lin^{A,B,F,G}, Hsin Chi^{F,H}, Liang-Yen Lin^I, Nan-Chang Chiu^{F,H}, and Chien-Yu Lin^{A,B,F,}*

^ADepartment of Pediatrics, Hsinchu MacKay Memorial Hospital, Hsinchu City, Taiwan.

^BDepartment of Pediatrics, Hsinchu Municipal MacKay Children's Hospital, Hsinchu City, Taiwan.

^CDepartment of Internal Medicine, Hsinchu MacKay Memorial Hospital, Hsinchu City, Taiwan.

^DTeaching Center of Natural Science, Minghsin University of Science and Technology, Hsinchu County, Taiwan.

^EDepartment of Obstetrics and Gynecology, Hsinchu MacKay Memorial Hospital, Hsinchu City, Taiwan.

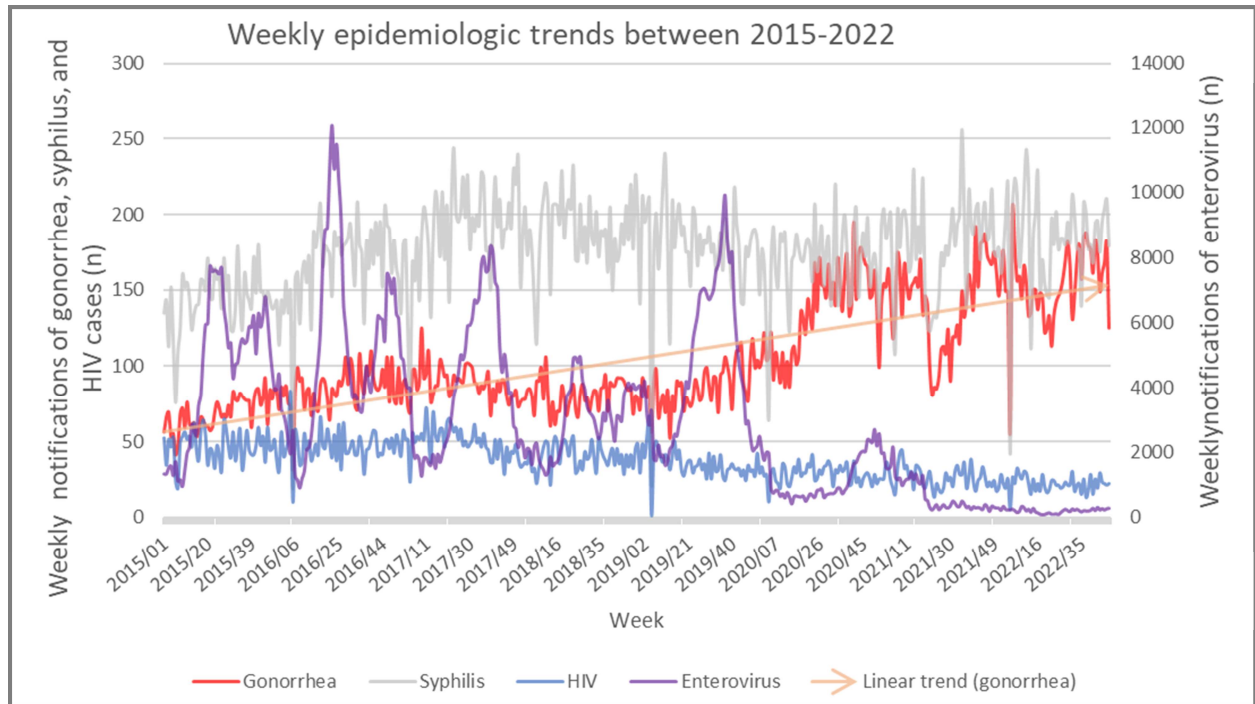
^FDepartment of Medicine, MacKay Medical College, New Taipei City, Taiwan.

^GDepartment of Biological Science and Technology, National Yang Ming Chiao Tung University, Hsinchu City, Taiwan.

^HDepartment of Pediatrics, MacKay Children's Hospital, Taipei City, Taiwan.

^IPei Ying Junior High School, Hsinchu City, Taiwan.

*Correspondence to: Chien-Yu Lin Hsinchu Municipal MacKay Children's Hospital, No. 28, Jiangong 2 Road, East District, Hsinchu City 30071, Taiwan Email: mmhped.lin@gmail.com



Supplementary Figure S1 Detailed weekly notifications of gonorrhoea, syphilis, HIV, and enterovirus in Taiwan from 2015 to 2022.

Supplementary Table S1. Detailed linear trends and coefficient of determination of weekly notifications of gonorrhoea, syphilis, HIV, and enterovirus in Taiwan from 2015 to 2022.

Disease	Gonorrhoea	Syphilis	HIV	Enterovirus
Slope	0.2365	0.0686	-0.07777	-12.738
R^2	0.6199	0.0687	0.5179	0.3589

*Abbreviations: HIV, human immunodeficiency virus; R^2 , coefficient of determination

Supplementary Table S2. Gender distribution of yearly gonorrhoea notifications in Taiwan from 2015 to 2022

Year	2015	2016	2017	2018	2019	2020	2021	2022	Total
Cases	3585	4455	4600	4197	4487	7138	7380	8010	43852
Male	3354	4128	4234	3895	4151	6448	6645	7183	40038
Females	231	327	366	302	336	689	734	827	3812
Gender not identified	0	0	0	0	0	1	1	0	2
Female (%)	6.4%	7.3%	8.0%	7.2%	7.5%	9.7%	9.9%	10.3%	8.7%
Male (%)	93.6%	92.7%	92.0%	92.8%	92.5%	90.3%	90.0%	89.7%	91.3%