

[10.1071/RD24163](https://doi.org/10.1071/RD24163)

Reproduction, Fertility and Development

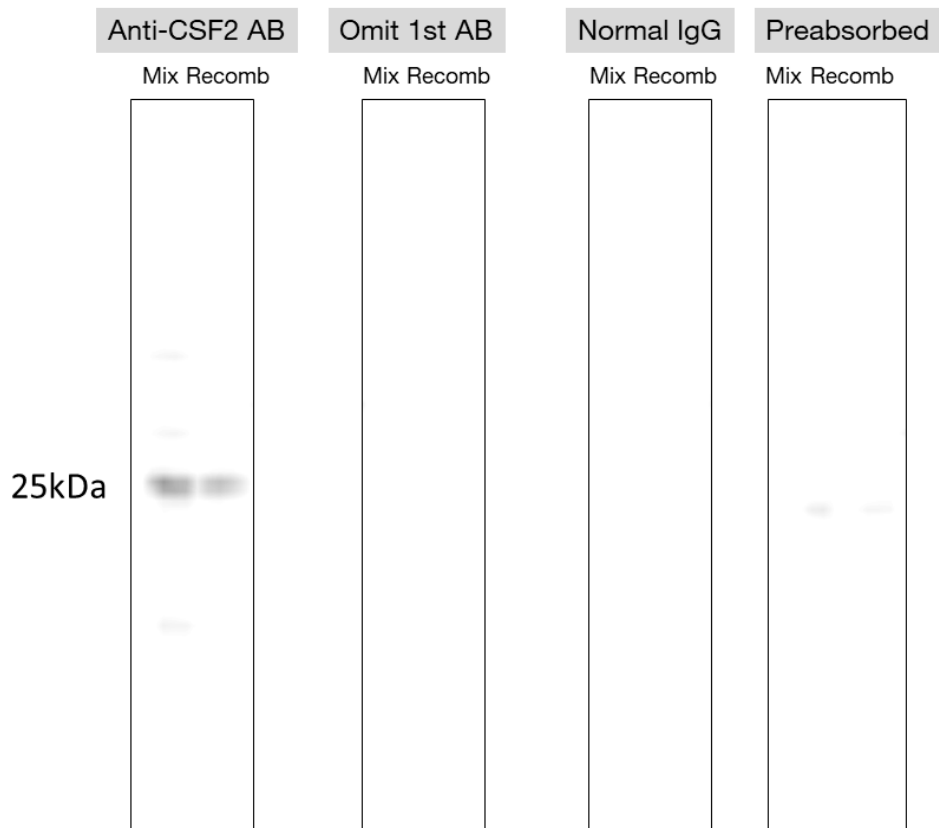
Supplementary Material

Lower expression of colony-stimulating factor 2, an embryokine, in the endometrial epithelium of old cows

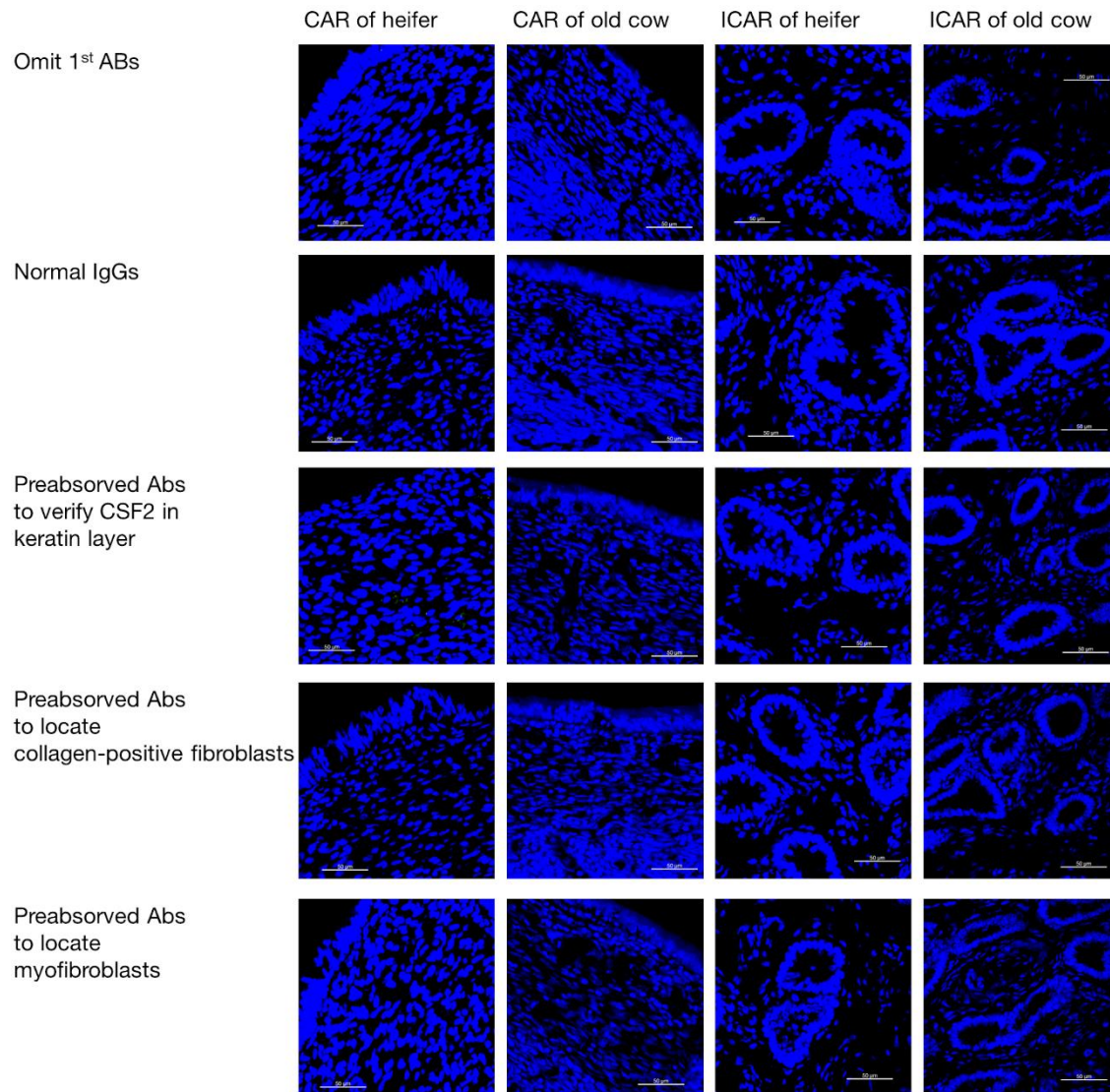
Denis Karani Wanjiru^A, Yvan Bienvenu Niyonzima^A, and Hiroya Kadokawa^{A,}*

^A Faculty of Veterinary Medicine, Yamaguchi University, Yamaguchi-shi, Yamaguchi-ken 1677-1, Japan.

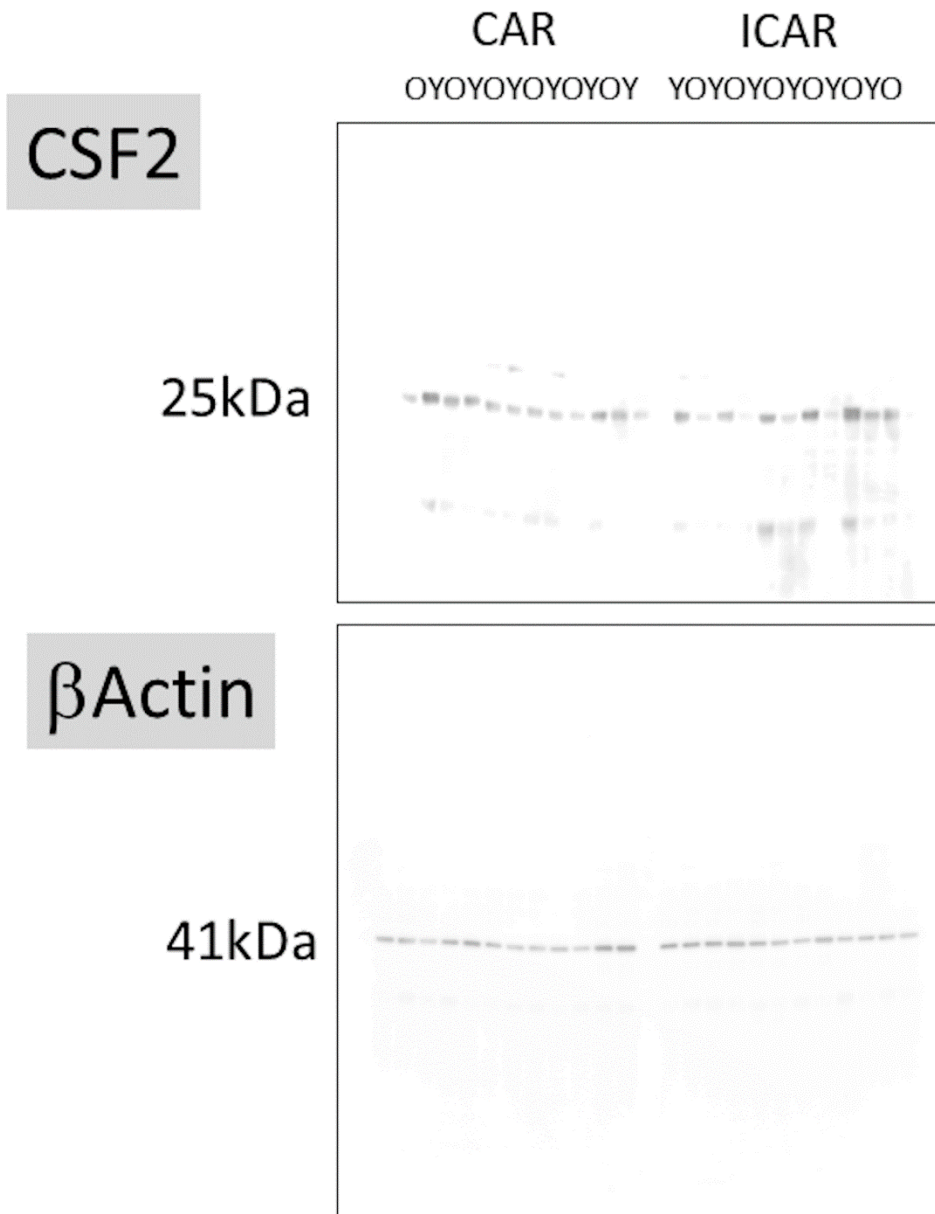
*Correspondence to: Hiroya Kadokawa Faculty of Veterinary Medicine, Yamaguchi University, Yamaguchi-shi, Yamaguchi-ken 1677-1, Japan Email: hiroya@yamaguchi-u.ac.jp



Supplementary Figure S1. Comparison of western blot images to verify the specificity of the signal. After electrophoresis of the bovine endometrium protein mixture (Mix) and recombinant bovine CSF2 (Recomb), membranes were cut into four pieces and treated with either anti-CSF2 antibody, no antibody (omitted negative control), normal rabbit IgG, or the anti-CSF2 antibody pre-absorbed with the antigen peptide.



Supplementary Figure S2. Comparison of merged immunohistochemistry images to verify the specificity of the signal, using no antibody (omitted negative control), normal rabbit IgG, or the anti-CSF2 antibody pre-absorbed with the antigen peptide. These methods were used to verify CSF2 in the keratin layer, locate collagen-positive fibroblasts, or locate myofibroblasts in the CAR or ICAR of heifers or old cows. Scale bars represent 50 μ m.



Supplementary Figure S3. A photo of a whole western blot for CSF2 was used for the statistical analyses. O: Old group. Y: Young group