

[10.1071/RD23132](https://doi.org/10.1071/RD23132)

Reproduction, Fertility and Development

Supplementary Material

Clustering of spermatozoa examined through flow cytometry provides more information than the conventional assessment: a resilience to osmotic stress example

Julian Valencia^{A,B,C}, Sebastián Bonilla-Correa^{A,B,C}, Elisabeth Pinart^{B,C}, Sergi Bonet^{B,C}, and Marc Yeste^{B,C,D,}*

^AFaculty of Veterinary Medicine, University Antonio Nariño, Popayán CO-190002, Colombia.

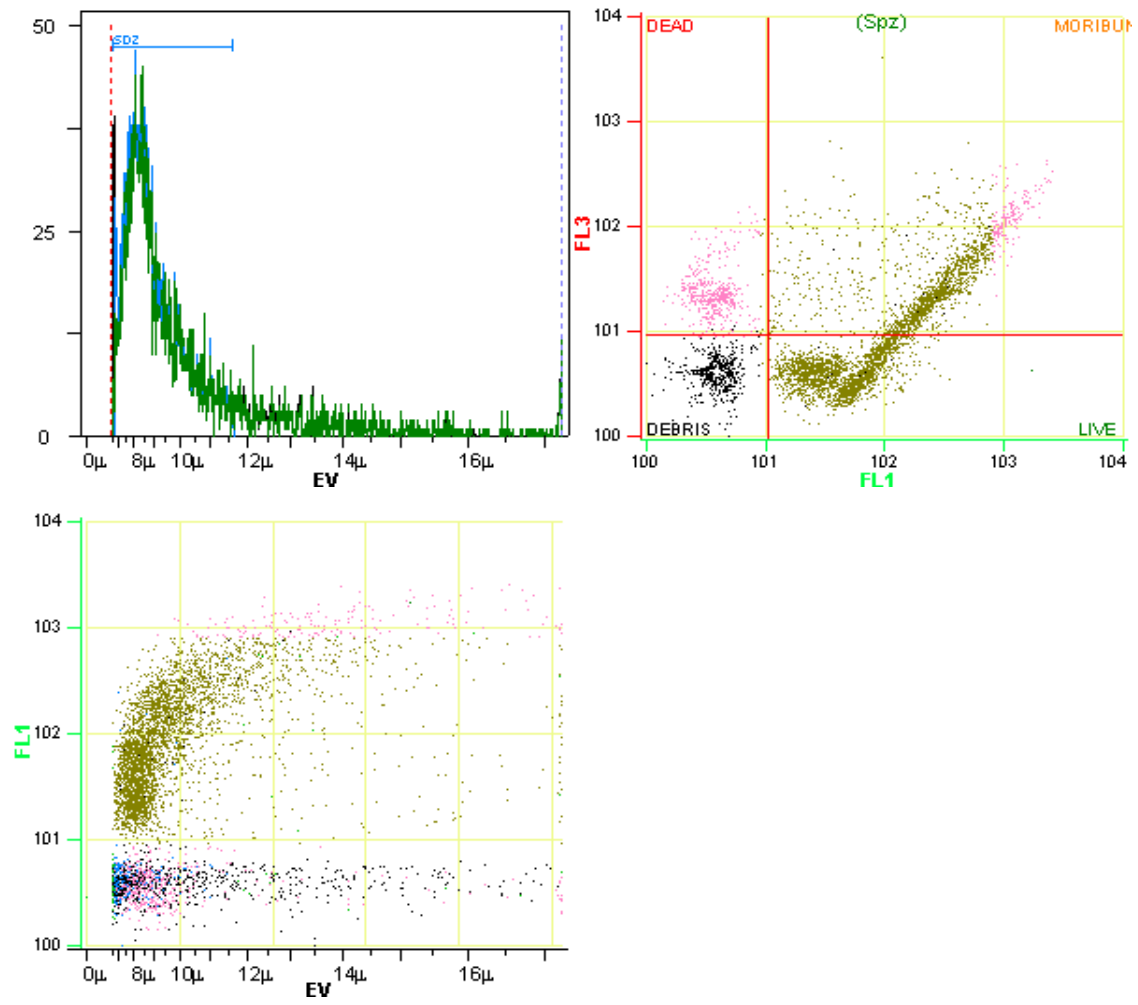
^BBiotechnology of Animal and Human Reproduction (TechnoSperm), Institute of Food and Agricultural Technology, University of Girona, Girona ES-17003, Spain.

^CUnit of Cell Biology, Department of Biology, Faculty of Sciences, University of Girona, Girona ES-17003, Spain.

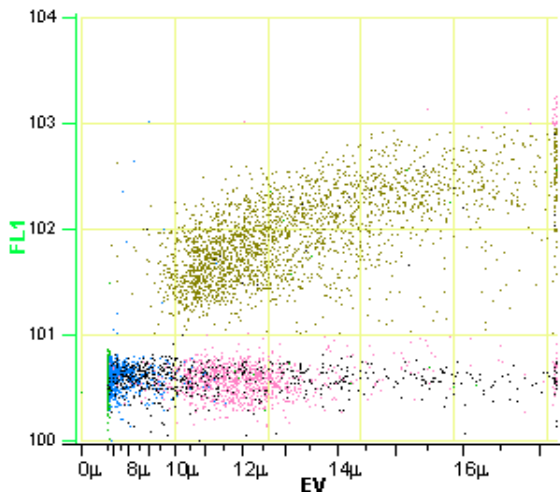
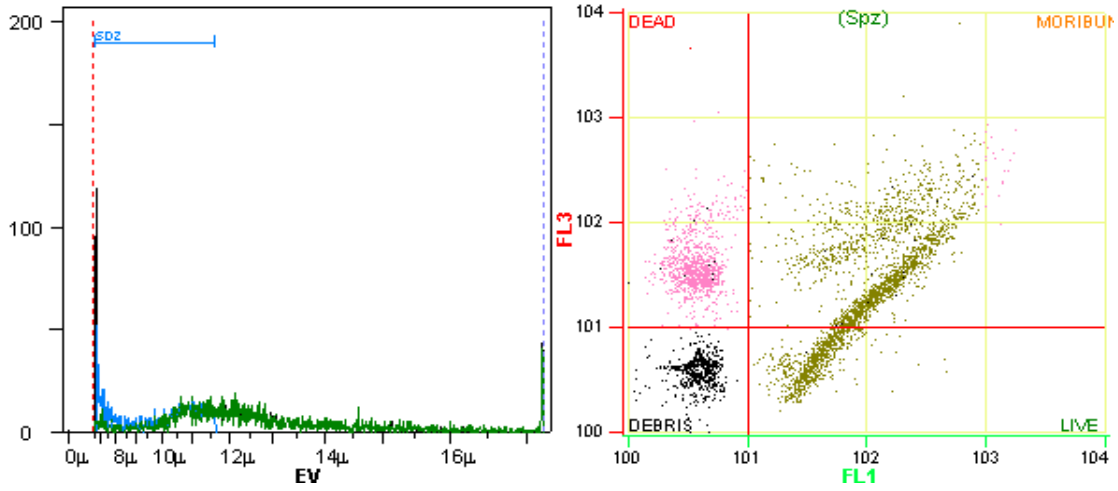
^DCatalan Institution for Research and Advanced Studies (ICREA), Barcelona ES-08010, Spain.

*Correspondence to: Marc Yeste Biotechnology of Animal and Human Reproduction (TechnoSperm), Institute of Food and Agricultural Technology, University of Girona, Girona ES-17003, Spain Email: marc.yeste@udg.edu

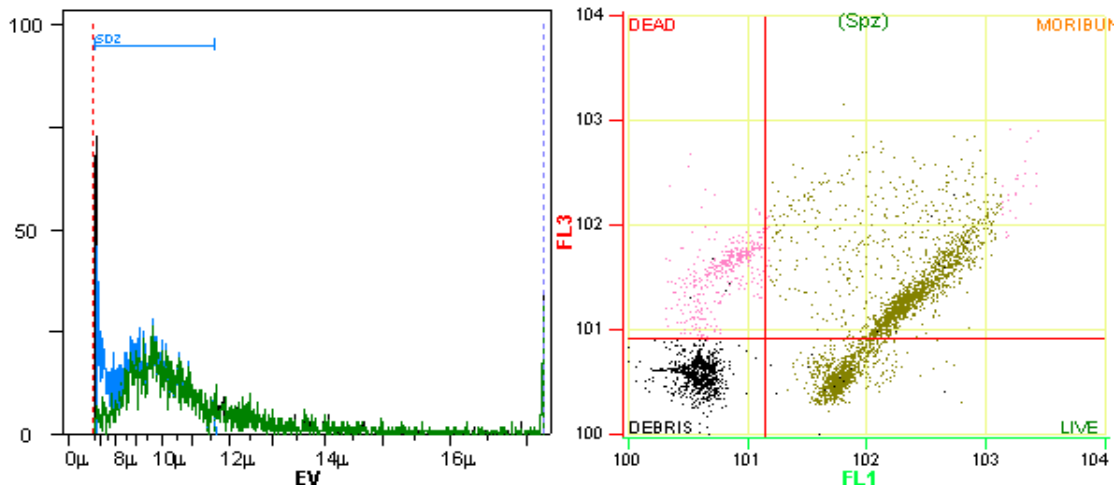
A)

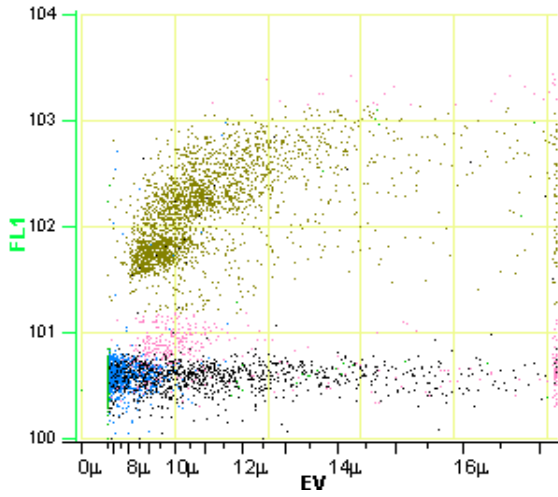


B)

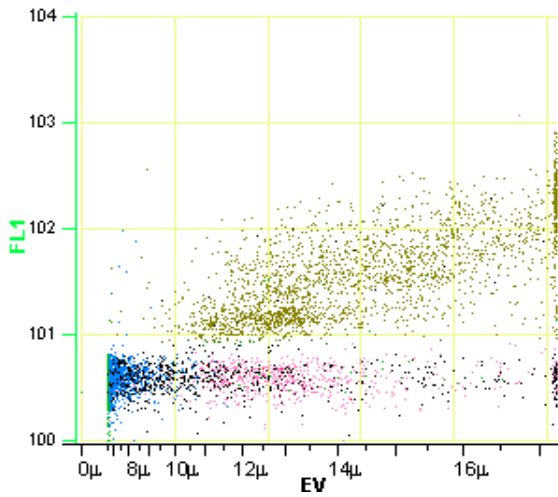
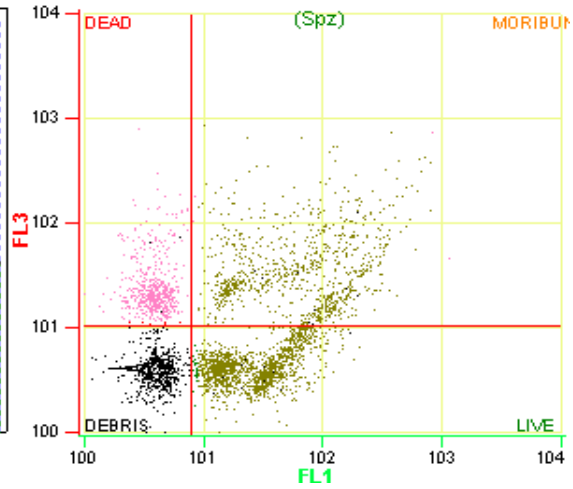
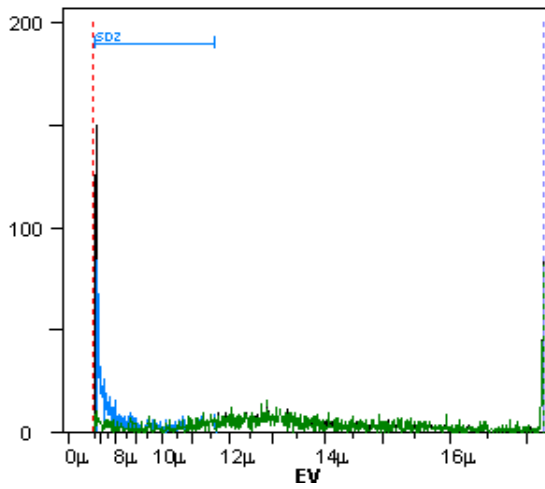


C)





D)



Supplementary Figure S1. Distribution of sperm subpopulations identified by flow cytometry in iso- and hypotonic conditions, after 5 min and 20 min of incubation. Isotonic conditions at 5 min (**A**), hypotonic conditions at 5 min (**B**), isotonic conditions at 20 min (**C**) hypotonic conditions at 20 min of viable (SYBR-14⁺/PI⁻) and non-viable/moribund (SYBR-14⁺/PI⁺).