

## Supplementary material for

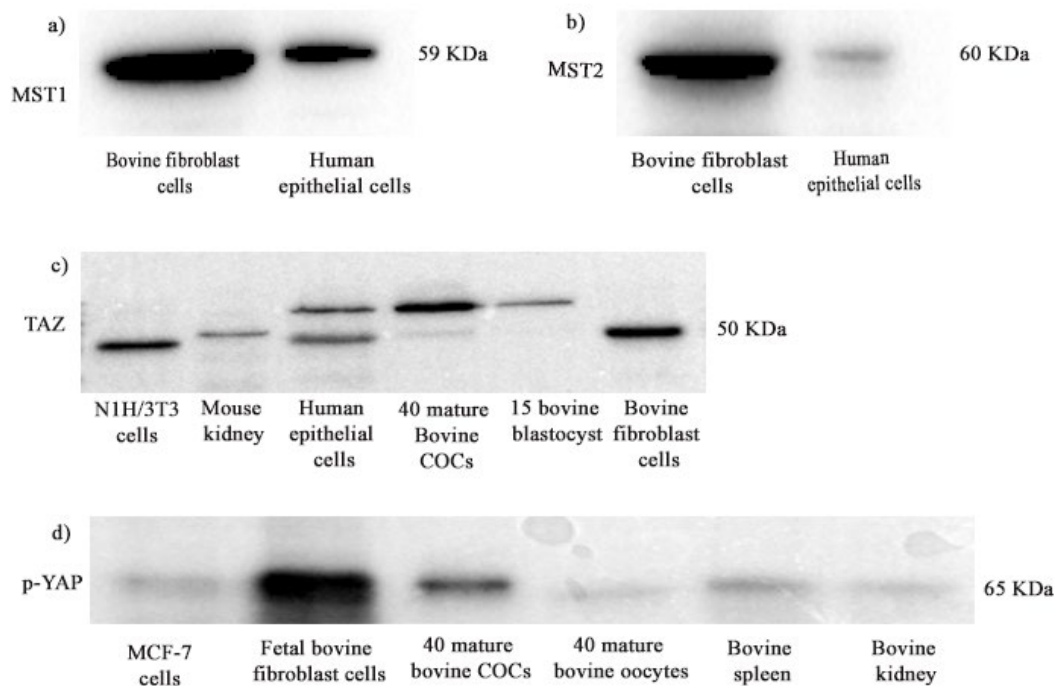
### Characterisation of the Hippo signalling pathway during bovine preimplantation embryo development

Jyoti Sharma<sup>A</sup> and Pavneesh Madan<sup>A,B</sup>

<sup>A</sup>Department of Biomedical Sciences, Ontario Veterinary College, University of Guelph, 50 Stone Road East, Guelph, ON N1G 2W1, Canada.

<sup>B</sup>Corresponding author. Email: pmadan@uoguelph.ca

**Fig. S1.** Western blot images showing bovine specificity of (a) anti-MST1, (b) anti-MST2, (c) anti-TAZ and (d) anti-p-YAP1 antibodies.



Supplementary Figure: Western blot image showing bovine specificity of (a) anti-MST1, (b) anti-MST2, (c) anti-TAZ and (d) anti-p-YAP antibodies