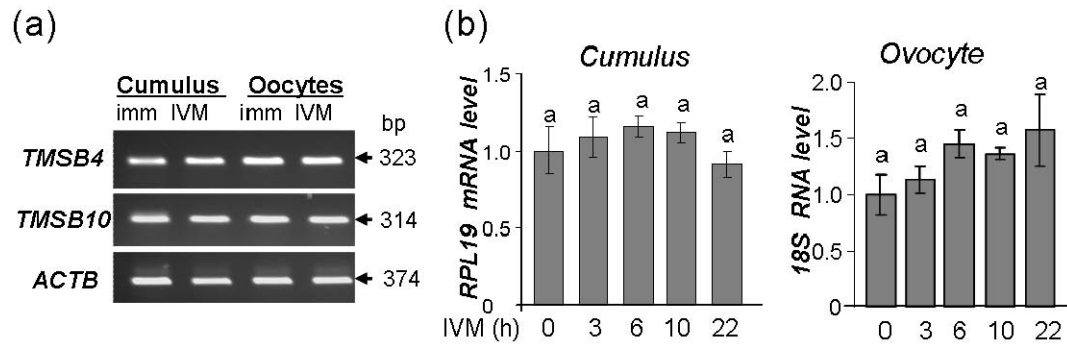
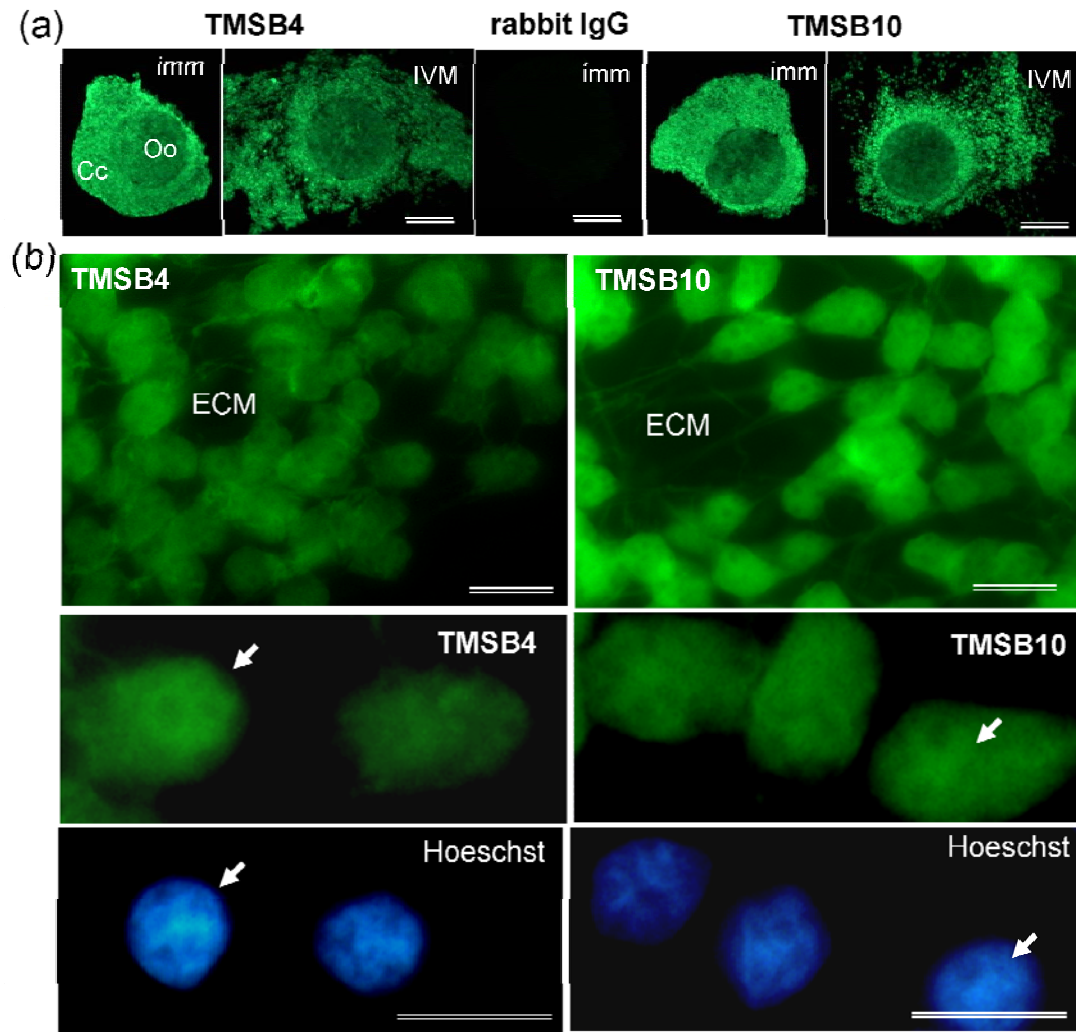


### Accessory Publication



**Fig. S1.** (a) RT-PCR detection of *TMSB4* and *TMSB10* mRNA expression in immature and mature cumulus and oocytes in bovine. DNA fragment of expected sizes were amplified from 1 ng of cumulus converted RNA and equivalent of 0.01 oocyte RNA content using specific primers. Actin beta (*ACTB*) was used as a control. (b) Kinetics of expression of *RPL19* RNA in cumulus cells and *18S* RNA in oocytes during IVM as detected by real time RT-PCR. Expression level in immature state was considered as 1. Data are presented as mean  $\pm$  s.e.m.



**Fig. S2.** (a) Immunofluorescent detection of TMSB4 and TMSB10 (green) in compact immature COCs (imm) and in expanded mature COCs after 22 h of IVM (IVM). Control immunostaining was performed by using rabbit IgG instead of primary antibodies in the same experiment. Bars = 100  $\mu$ M. (b) TMSB4 and TMSB10 (green) in cumulus cells (here expanded cumulus) were detected in cytoplasm and was not excluded from nucleus (arrows). Chromatin were visualised by Hoechst blue staining (lower panel). ECM, extracellular matrix. Bars = 10  $\mu$ M.