

[10.1071/MF24031](https://doi.org/10.1071/MF24031)

Marine and Freshwater Research

Supplementary Material

Body condition in an endangered minnow is variable but not strongly related to environmental conditions

Thomas P. Archdeacon^{A,}, and Paige M. Dunnum^A*

^ANew Mexico Fish and Wildlife Conservation Office, US Fish and Wildlife Service, Albuquerque, NM, USA.

*Correspondence to: Thomas P. Archdeacon New Mexico Fish and Wildlife Conservation Office, US Fish and Wildlife Service, Albuquerque, NM, USA Email: thomas_archdeacon@fws.gov

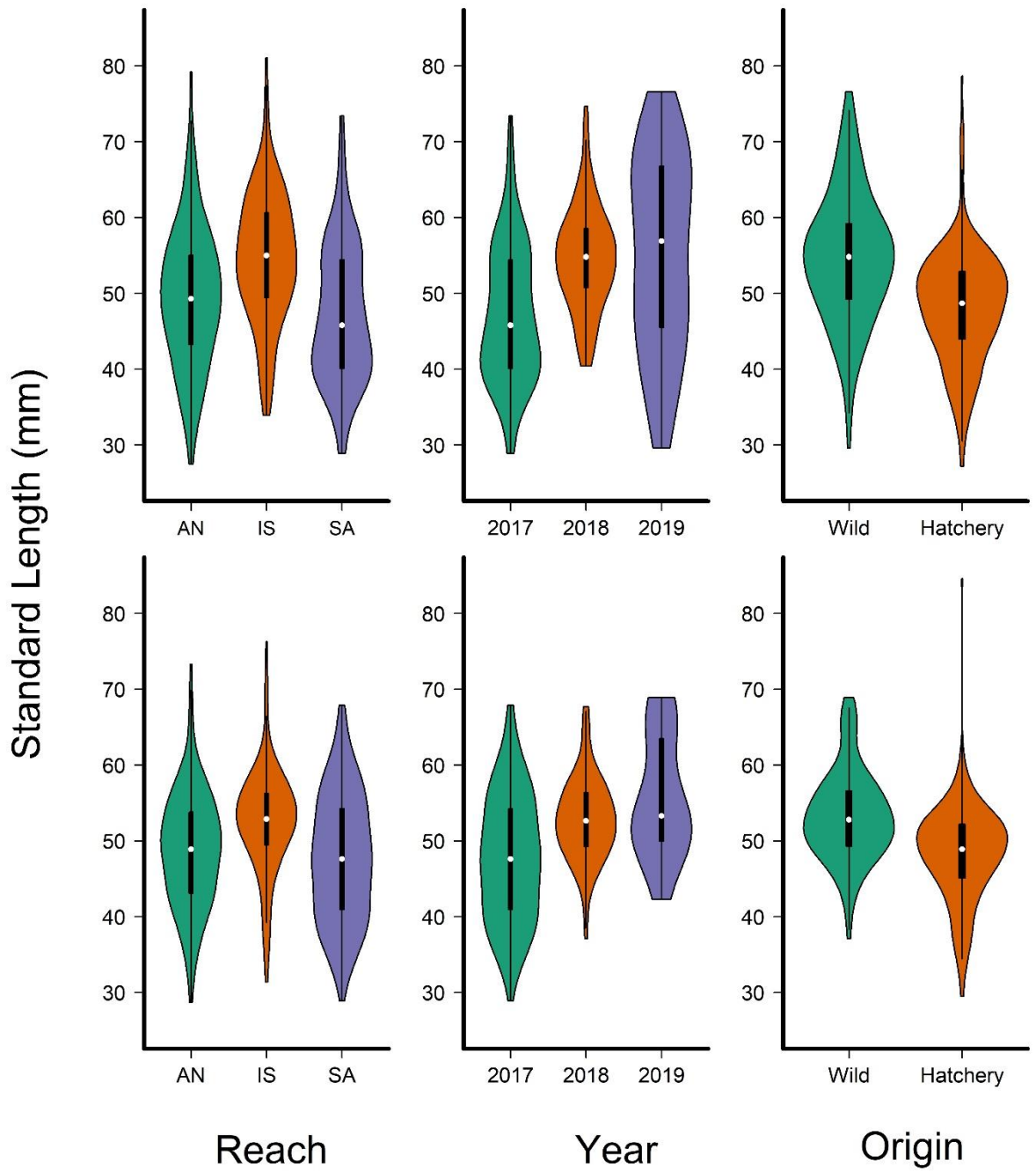


Figure S1. Lengths of Rio Grande Silvery Minnow (top row, male; bottom row, female) collected in the Middle Rio Grande, New Mexico, USA, by reach (AN, Angostura; IS, Isleta; SA, San Acacia), year and hatchery origin.

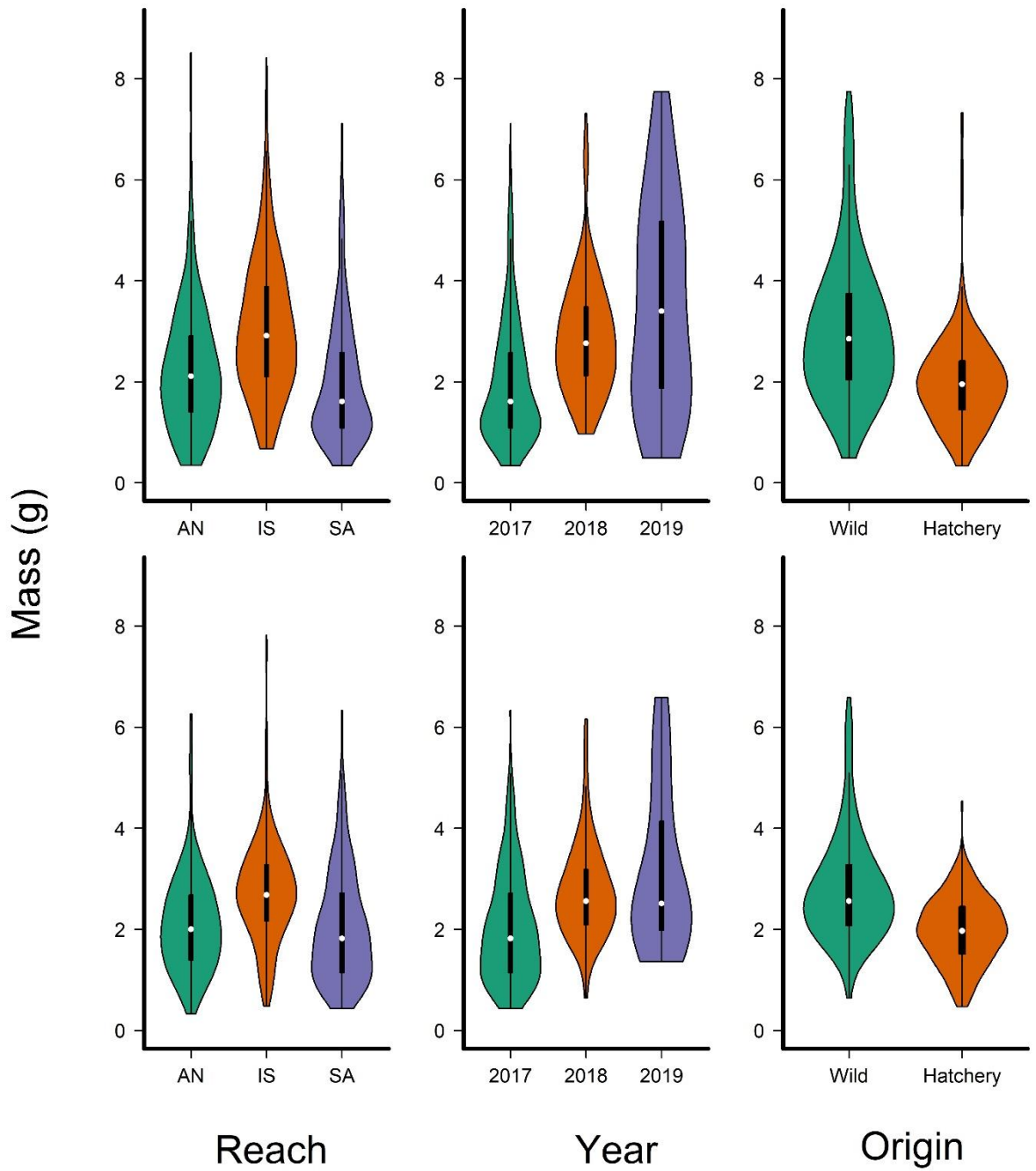


Figure S2. Mass of Rio Grande Silvery Minnow (top row, male; bottom row, female) collected in the Middle Rio Grande, New Mexico, USA, by reach (AN, Angostura; IS, Isleta; SA, San Acacia), year and hatchery origin.