

Supplementary Material

Abundance, size and biomass of long-spined sea urchins (*Centrostephanus rodgersii*) and red sea urchins (*Heliocidaris tuberculata*) in New South Wales, Australia

C. Blount^{A,B,C,*}, D. G. Worthington^D, M. Byrne^{C,E}, R. C. Chick^F, K. Organ^A, N. Knott^F, and N. L. Andrew^B

^ANSW Department of Primary Industries and Regional Development, 66 Harrington Street, Sydney, NSW 2000, Australia.

^BAustralian National Centre for Ocean Resources and Security, University of Wollongong, Wollongong, NSW 2500, Australia.

^CMarine Studies Institute, University of Sydney, Sydney, NSW 2006, Australia.

^DAmbrad Consulting, Wildes Meadow, NSW 2577, Australia.

^ESchool of Life and Environmental Sciences and Marine Studies Institute, University of Sydney, Sydney, NSW 2006, Australia.

^FNSW Department of Primary Industries and Regional Development, Taylors Beach, NSW 2316, Australia.

*Correspondence to: C. Blount NSW Department of Primary Industries and Regional Development, 66 Harrington Street, Sydney, NSW 2000, Australia Email: craig.blount@dpi.nsw.gov.au

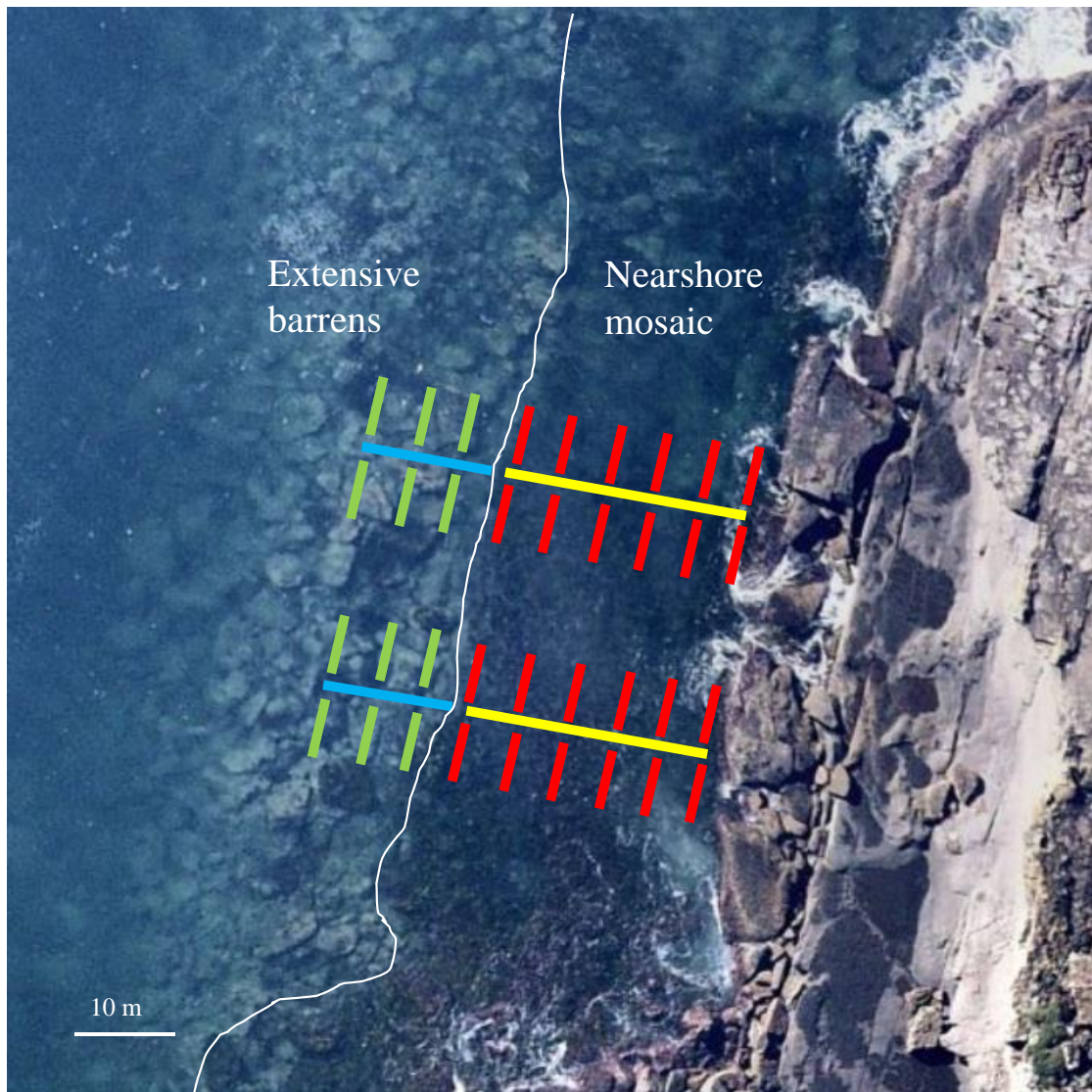


Figure S1. Example of transect layout at a survey site (Wasp Island), showing maximum 50-m main transect lines in the nearshore mosaic (yellow), 15-m main transect lines in extensive barrens (blue), 5×1 -m belt transects in the nearshore mosaic (red) and 5×1 -m belt transects in extensive barrens (green).