

Supplementary Material

Photosynthetic response in wheat plants caused by the phototoxicity of fluoranthene

Rupal S. Tomar^A and Anjana Jajoo^{B,C}

^ASchool of Life Science, Devi Ahilya University, Indore 452017, India.

^BSchool of Biotechnology, Devi Ahilya University, Indore 452017, India.

^CCorresponding author. Email: anjanajajoo@hotmail.com

Table S1. Response of F_v/F_m in 35 days cultivated wheat plants with FLT and P.FLT treatments

Treatments	F_v/F_m
Control	0.812 ± 0.005
1 mg L ⁻¹ FLT	0.803 ± 0.001*
1 mg L ⁻¹ P.FLT	0.794 ± 0.002**
5 mg L ⁻¹ FLT	0.706 ± 0.002***
5 mg L ⁻¹ P.FLT	0.665 ± 0.03***

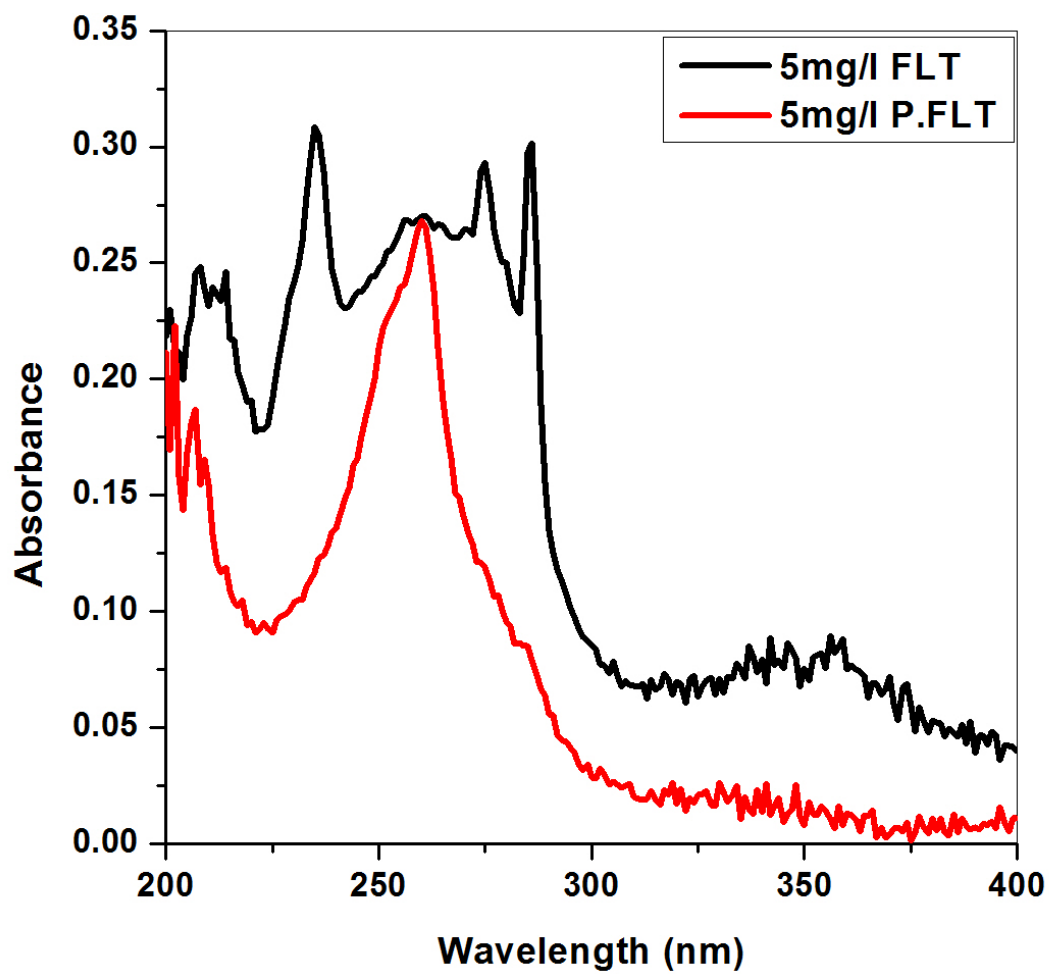


Fig. S1. Absorption spectra of intact and photo-modified FLT solutions (5mg/l).