

Department of Industry, Tourism and Trade

# Prospectivity of the world's oldest stacked petroleum systems with emphasis on the McArthur Supersystem

Amber Jarrett, Tim Munson, Adam Bailey and Tehani Palu

Vaughton Siltstone,  
northern McArthur Basin  
(McArthur Supersystem)

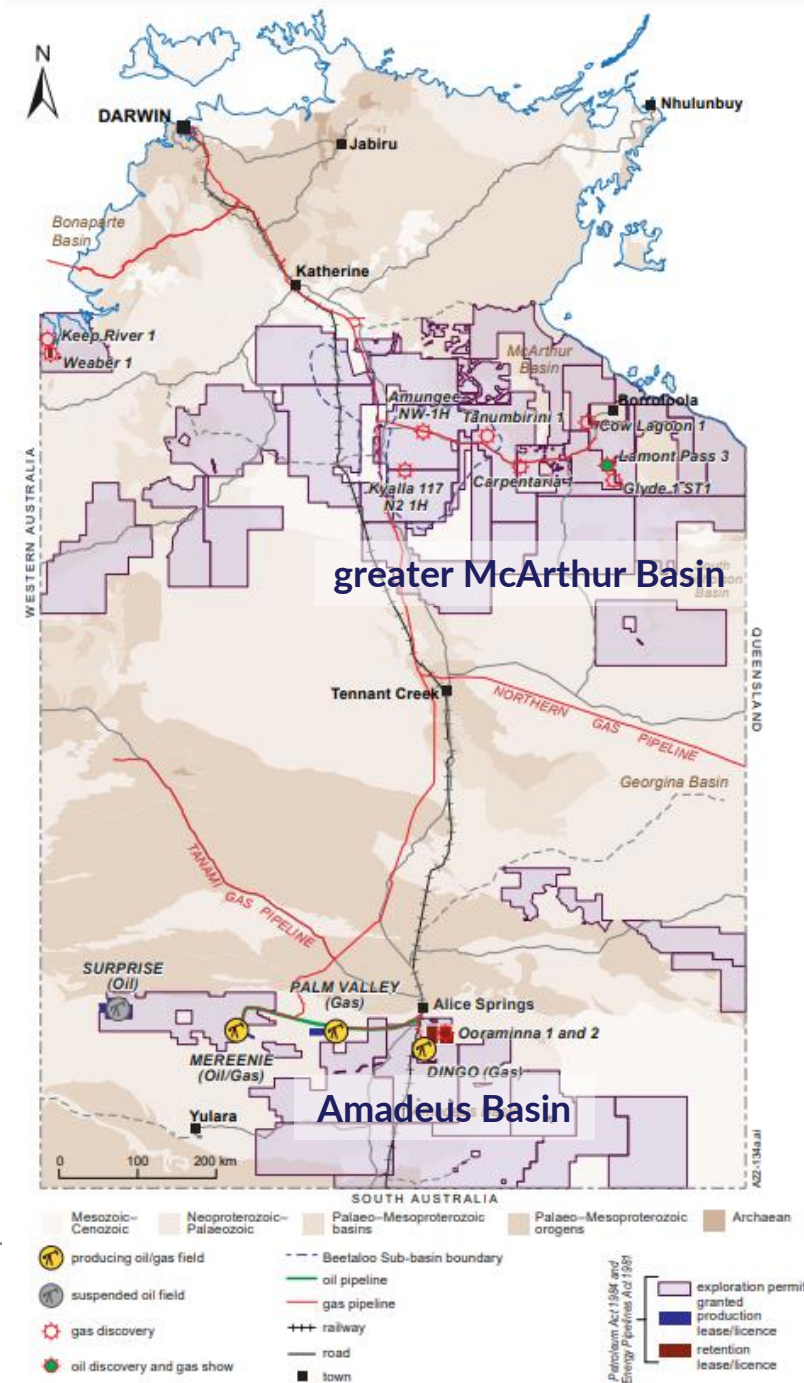


# Outline

1. Northern Territory oil and gas
2. The greater McArthur Basin project
3. New exploration framework: Stacked Petroleum supersystems to plays  
(using Proterozoic McArthur Supersystem as an example)

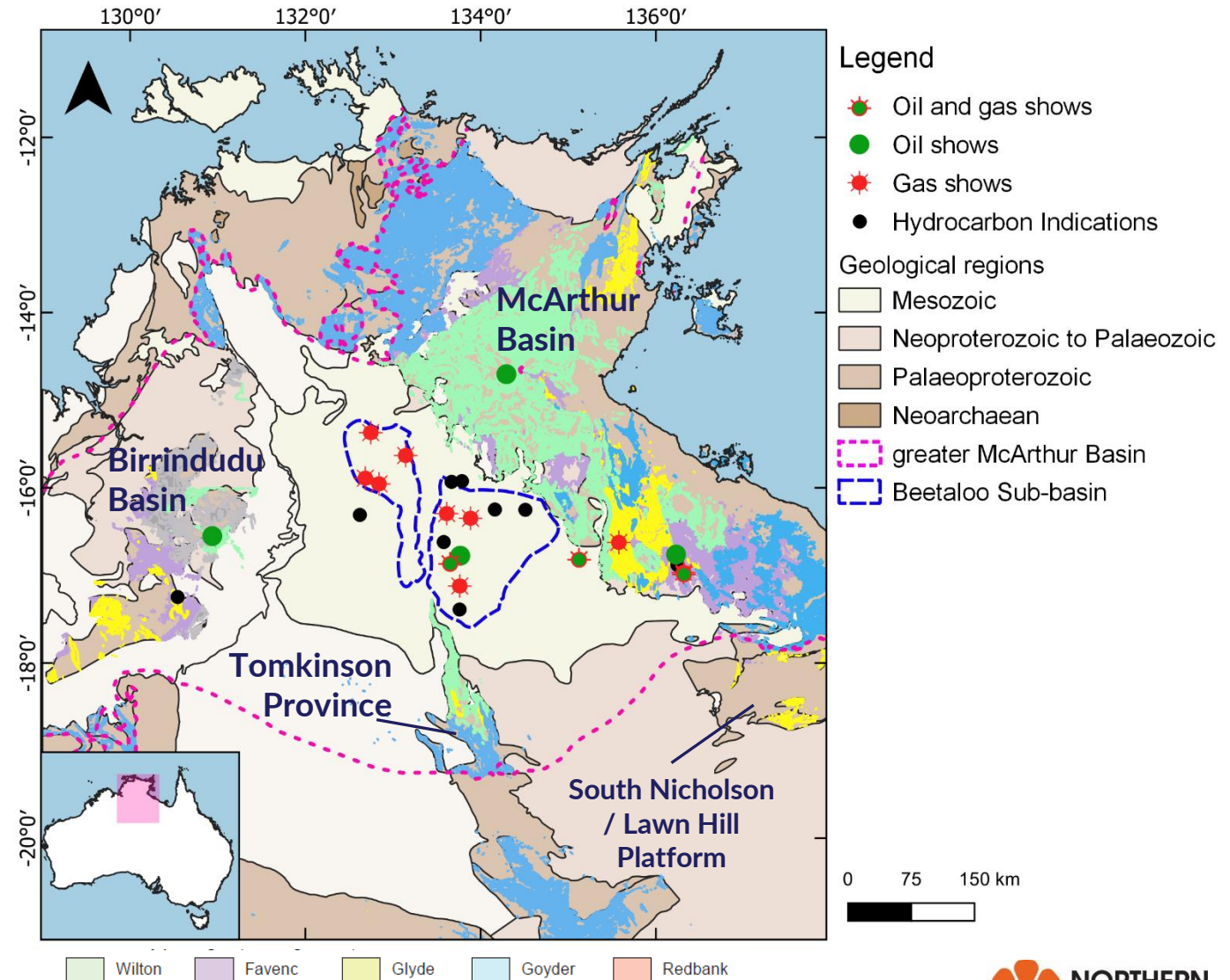
# Northern Territory energy

- Oil and gas production in the Amadeus Basin
- Exploration in the Amadeus Basin
  - Sub-salt hydrogen and helium
  - CCS potential
  - Conventional oil and gas
- Advanced exploration for shale gas in the greater McArthur Basin (including Beetaloo Sub-basin)
  - Exploration and appraisal of Beetaloo Sub-basin
  - New wells and flow testing 2021/22
- Many other NT basins are frontier, have great potential but are underexplored
- See NTGS Report 22 for a comprehensive summary

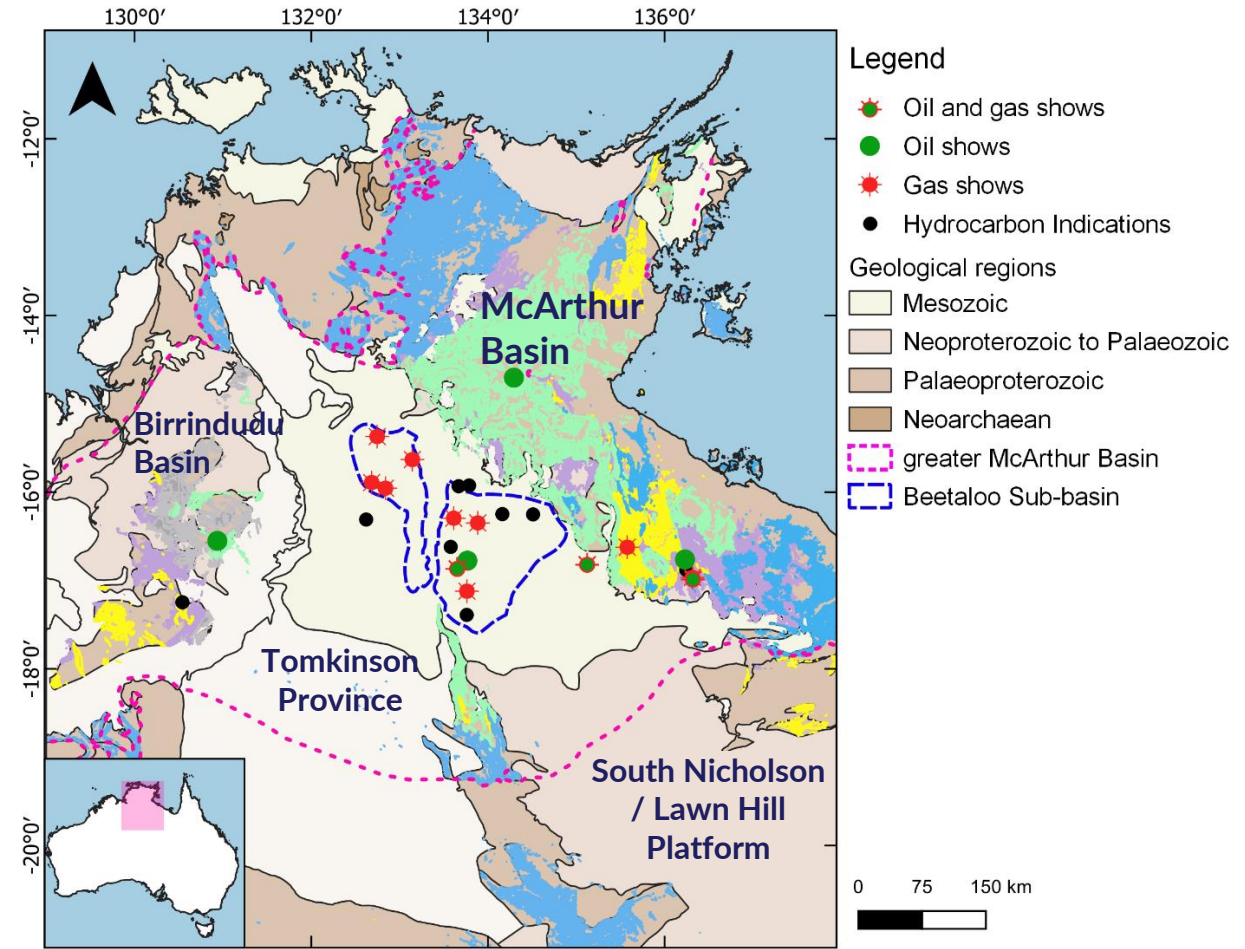
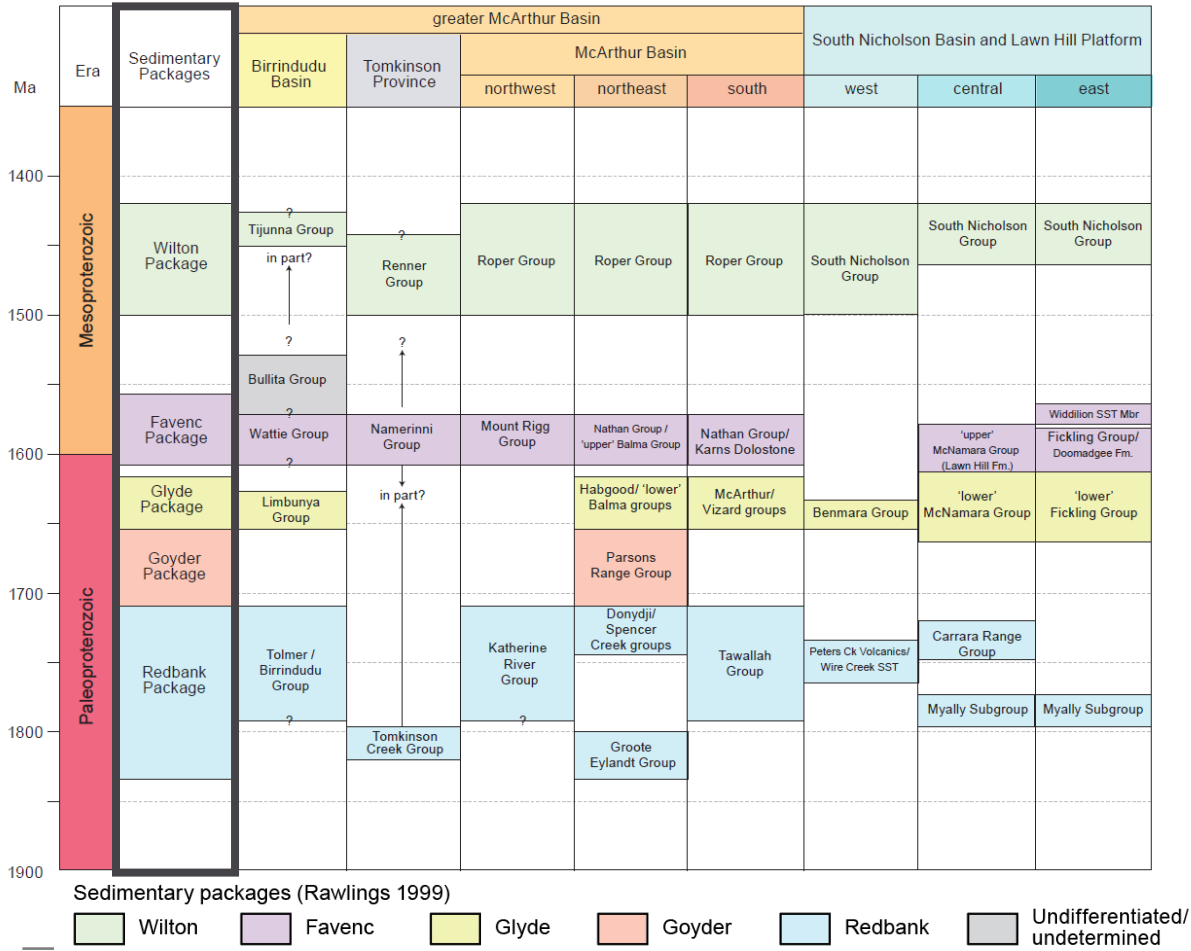


# Resourcing the Territory initiative

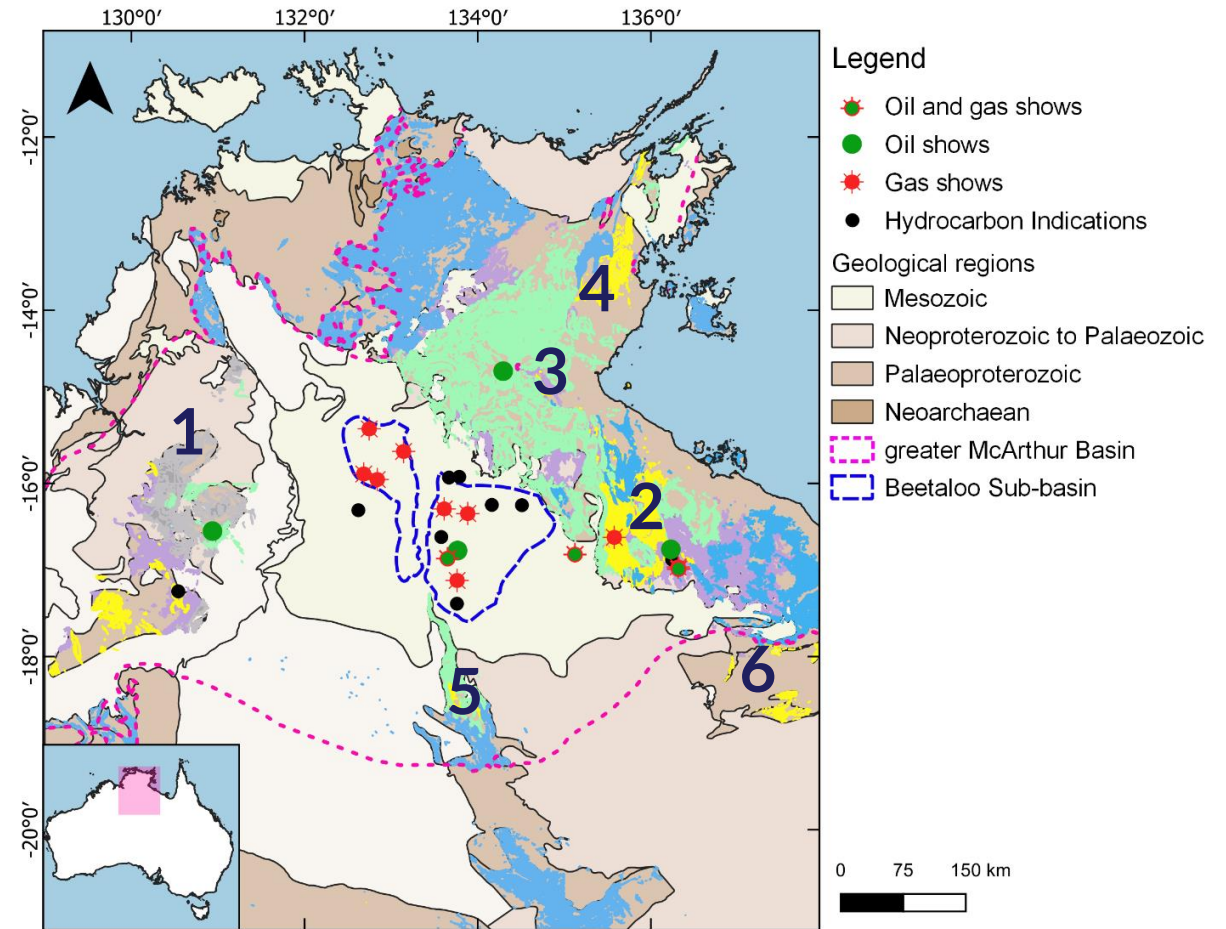
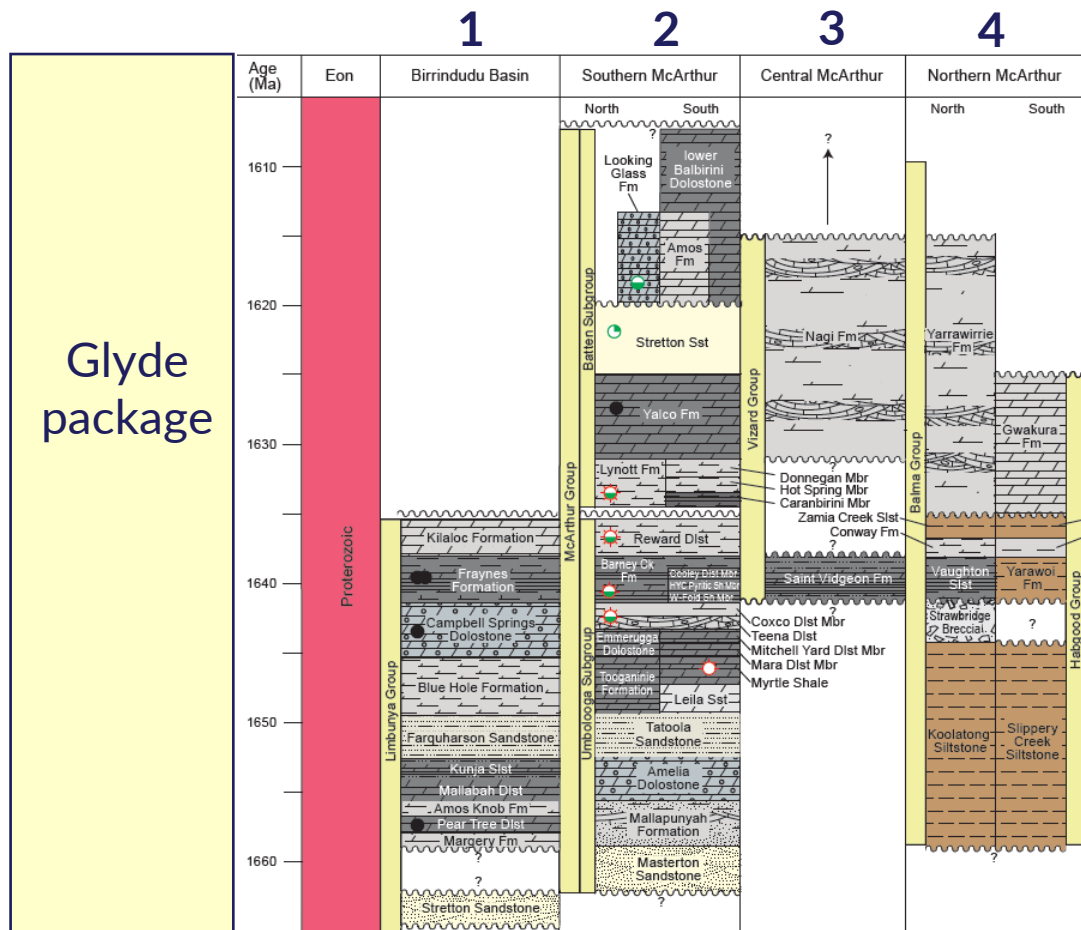
- Supporting exploration in the NT
- Providing precompetitive geoscience to unlock new areas for exploration
- This study focuses on creating a clear and consistent exploration framework across the greater McArthur Basin
- Bridges exploration scales from continent to prospect in both advanced and frontier regions



# The greater McArthur Basin



# Exploration challenges: Correlation and petroleum potential across the Glyde Package



**Lithologies**

shale, siltstone and fine sandstone	dolomitic sandstone, silicified carbonate, dolarenite	dolostone
sandstone, siltstone	dolomitic siltstone, shale and fine-grained sandstone	stromatolitic and/or oolitic dolostone
siltstone, shale and shaley silt	sandy dolostone	breccia
stromatolitic dolostone and dolarenite	mudstone, dolostone, carbonaceous shale, dolomitic siltstone	

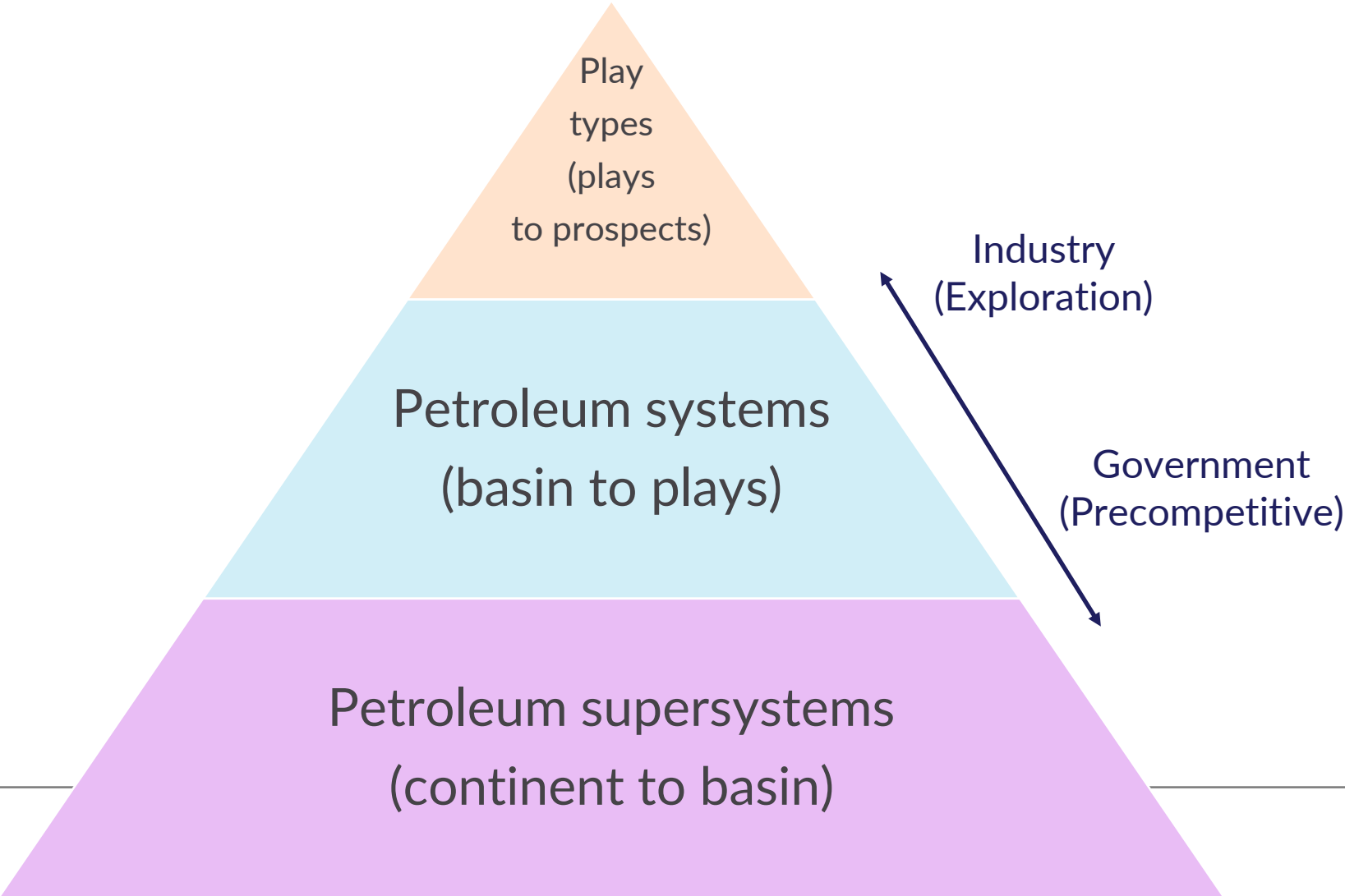
5 = Tomkinson Province 6 = Lawn Hill Platform  
(not shown in correlation chart)

# Exploration scales



- Exploration crosses multiple scales from continent-to-well-scale
- Each decision-making point requires different information
- Working at different scales can often lead to different terminology
- Consistent framework can lead to better exploration outcomes

# New stacked petroleum system framework

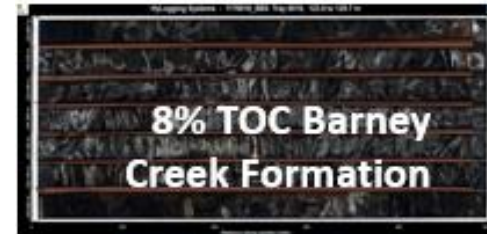
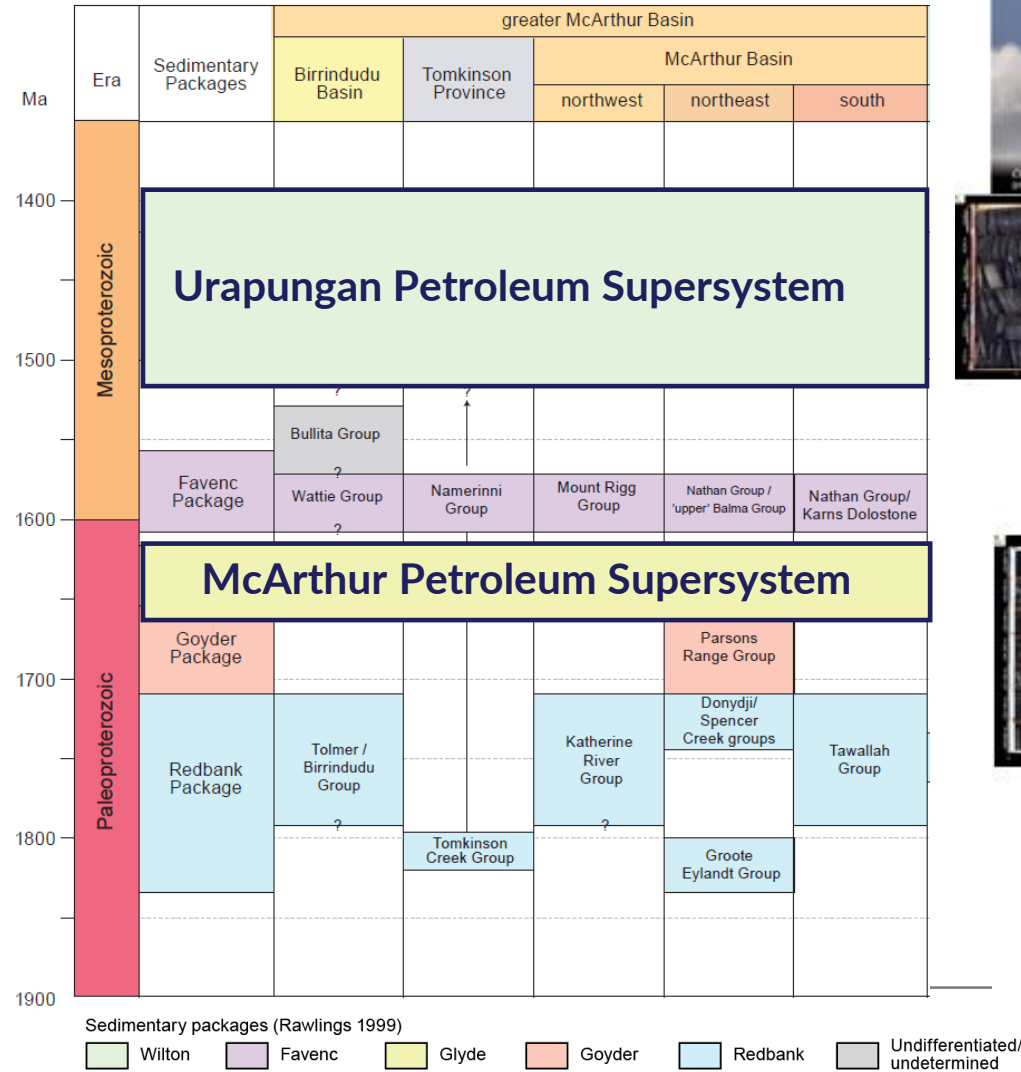
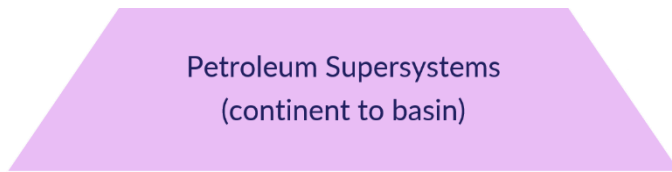




# Petroleum supersystems (continent to basin scales)

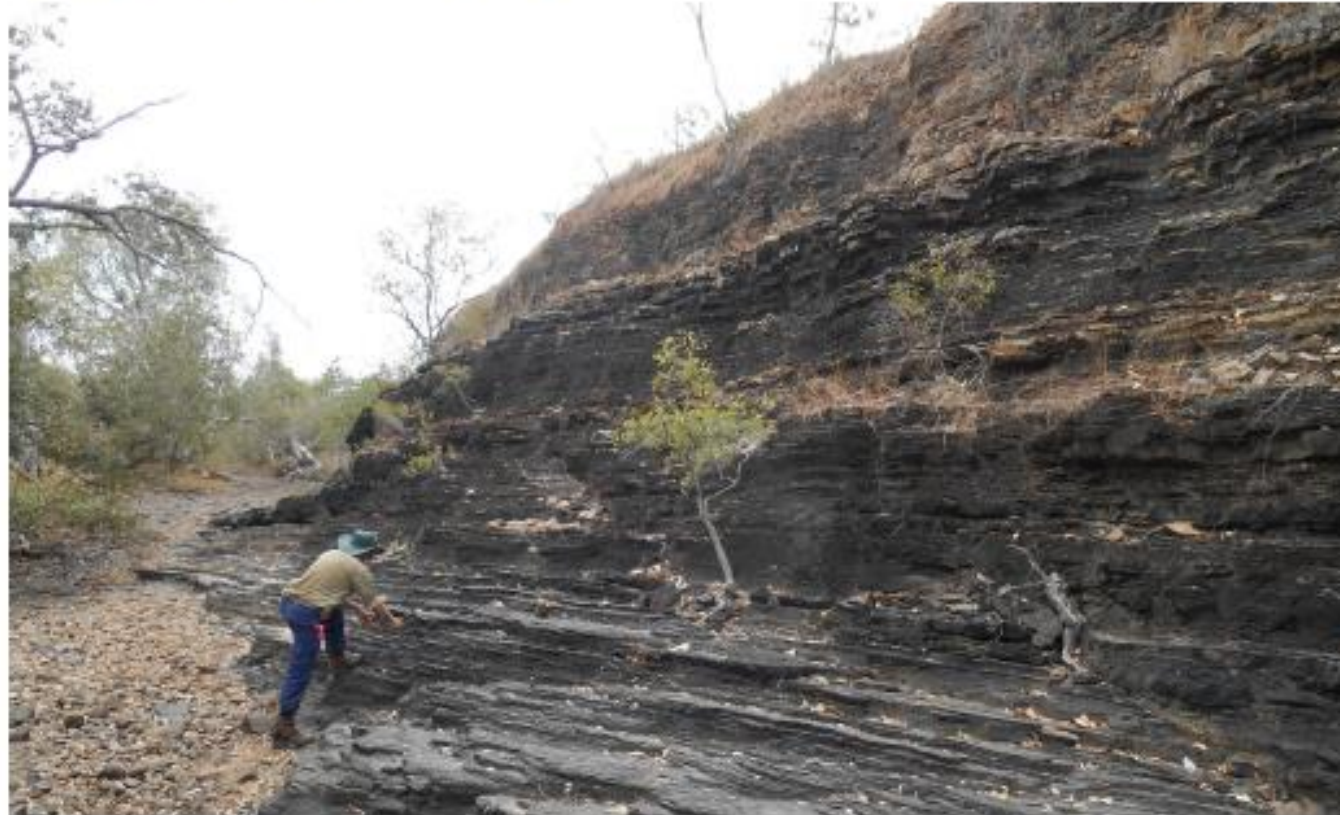
Previous version (Bradshaw *et al.* 1994)

- Continent-scale framework linking basins of similar age, depositional environment and hydrocarbon potential
- Can be used to make predictions in frontier regions
- Definition based on organic-richness and a hydrocarbon show
- Bradshaw *et al.* (1994) defined two Proterozoic supersystems



# Shale resource data from the greater McArthur Basin

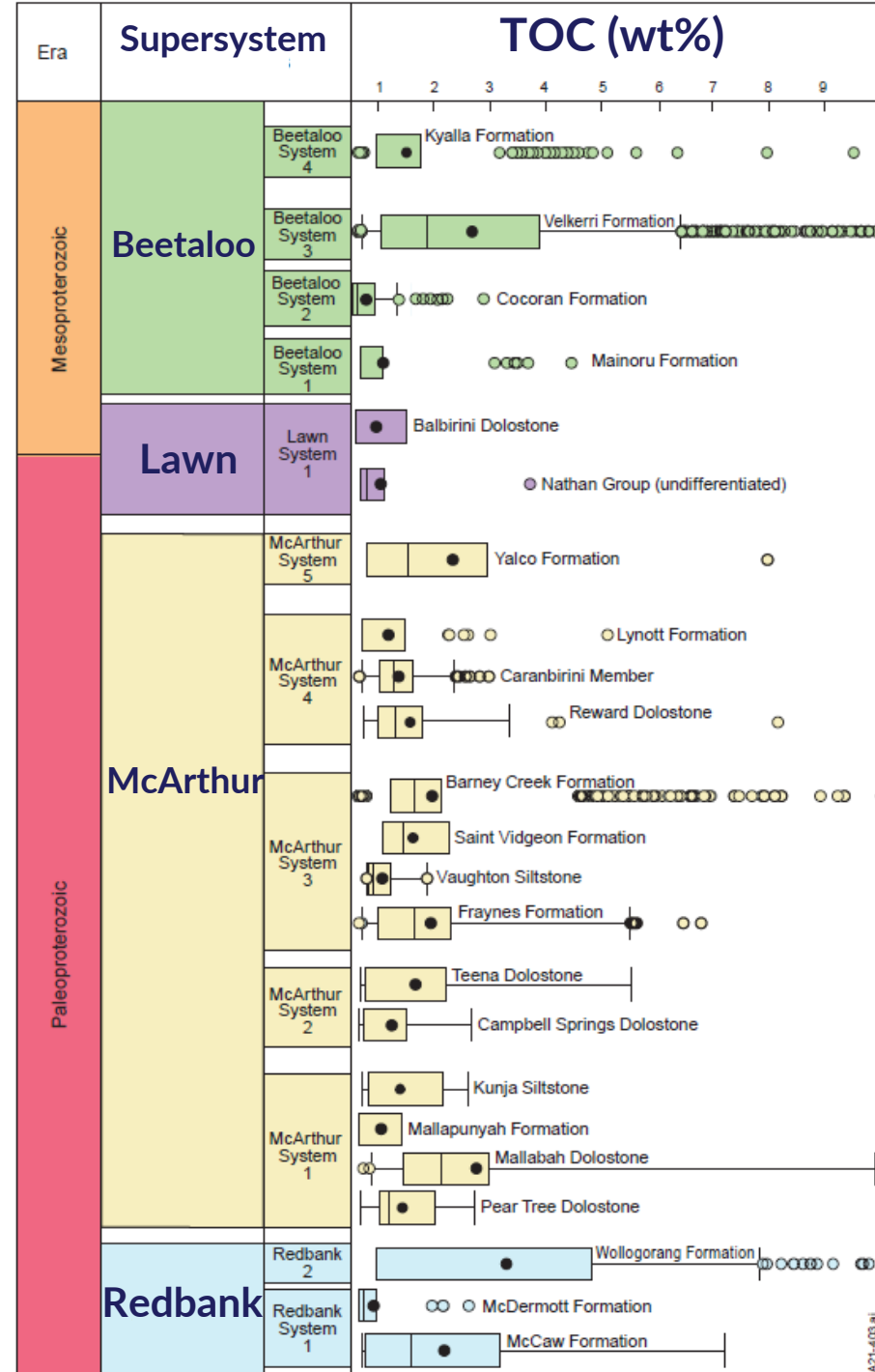
D Revie, VJ Normington and AJM Jarrett



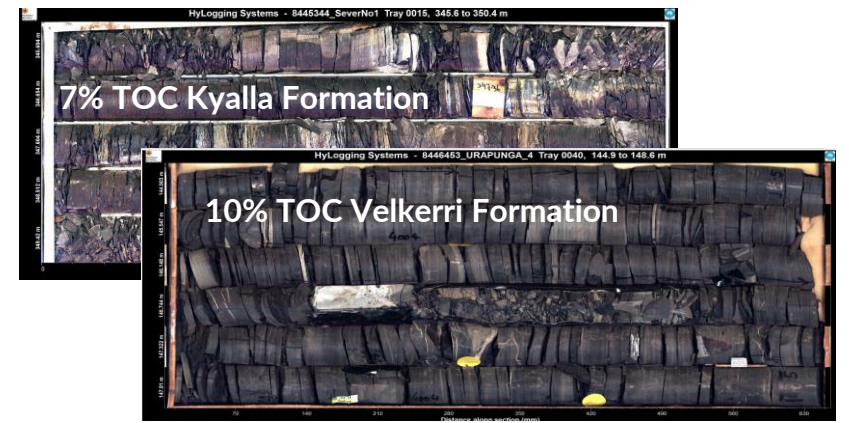
**Digital Information Package DIP 014**

March 2022



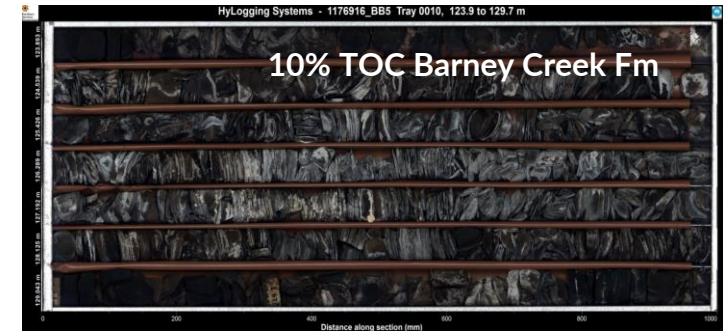


**Beetaloo Supersystem**  
 (formerly Urapungan Supersystem,  
 new systems 1 and 2)  
 See Jarrett *et al.* (2022) AGES



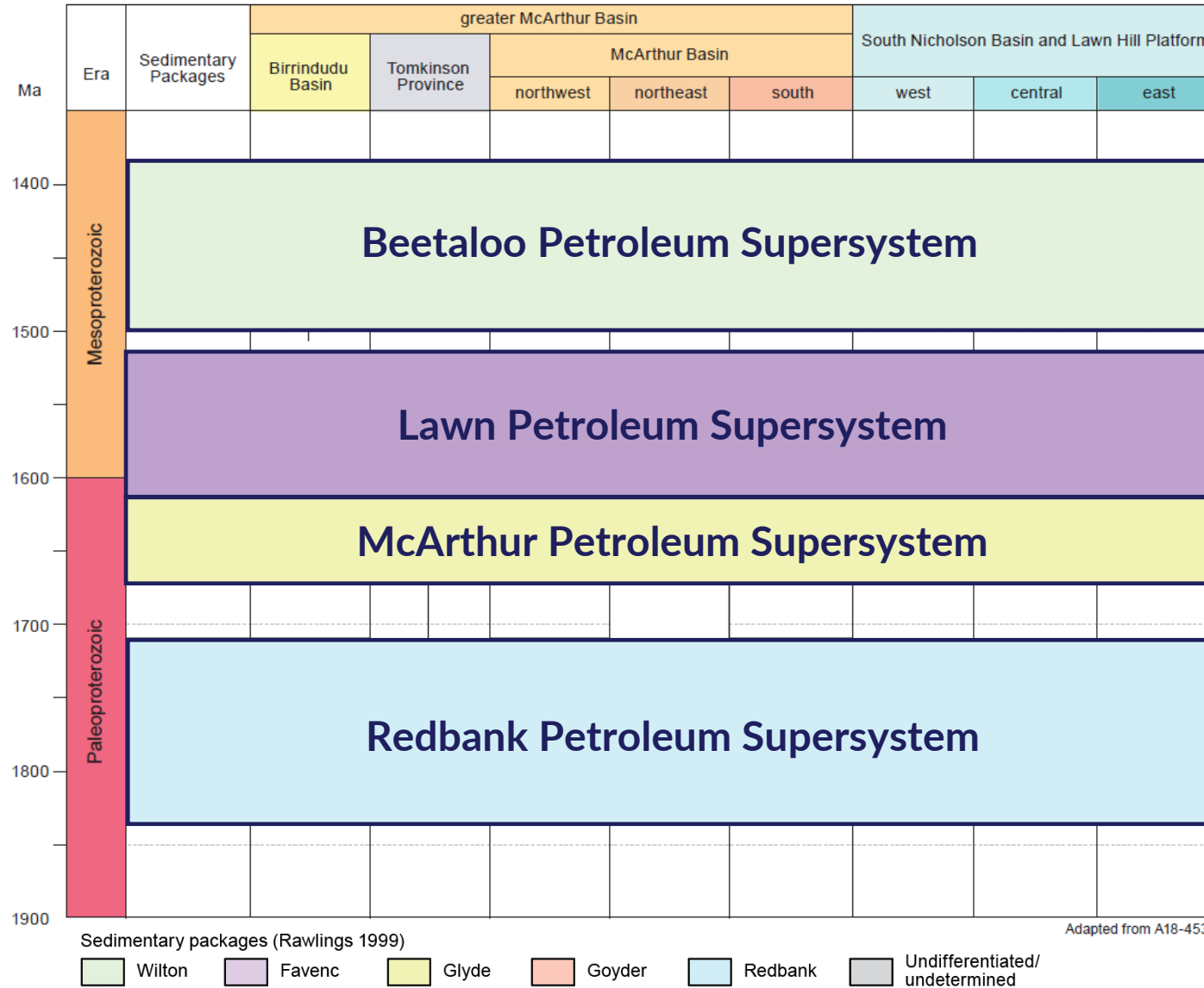
**Newly defined Lawn Supersystem**

**McArthur Supersystem**  
 (new systems 1, 2, 4, 5)



**Newly defined Redbank Supersystem**

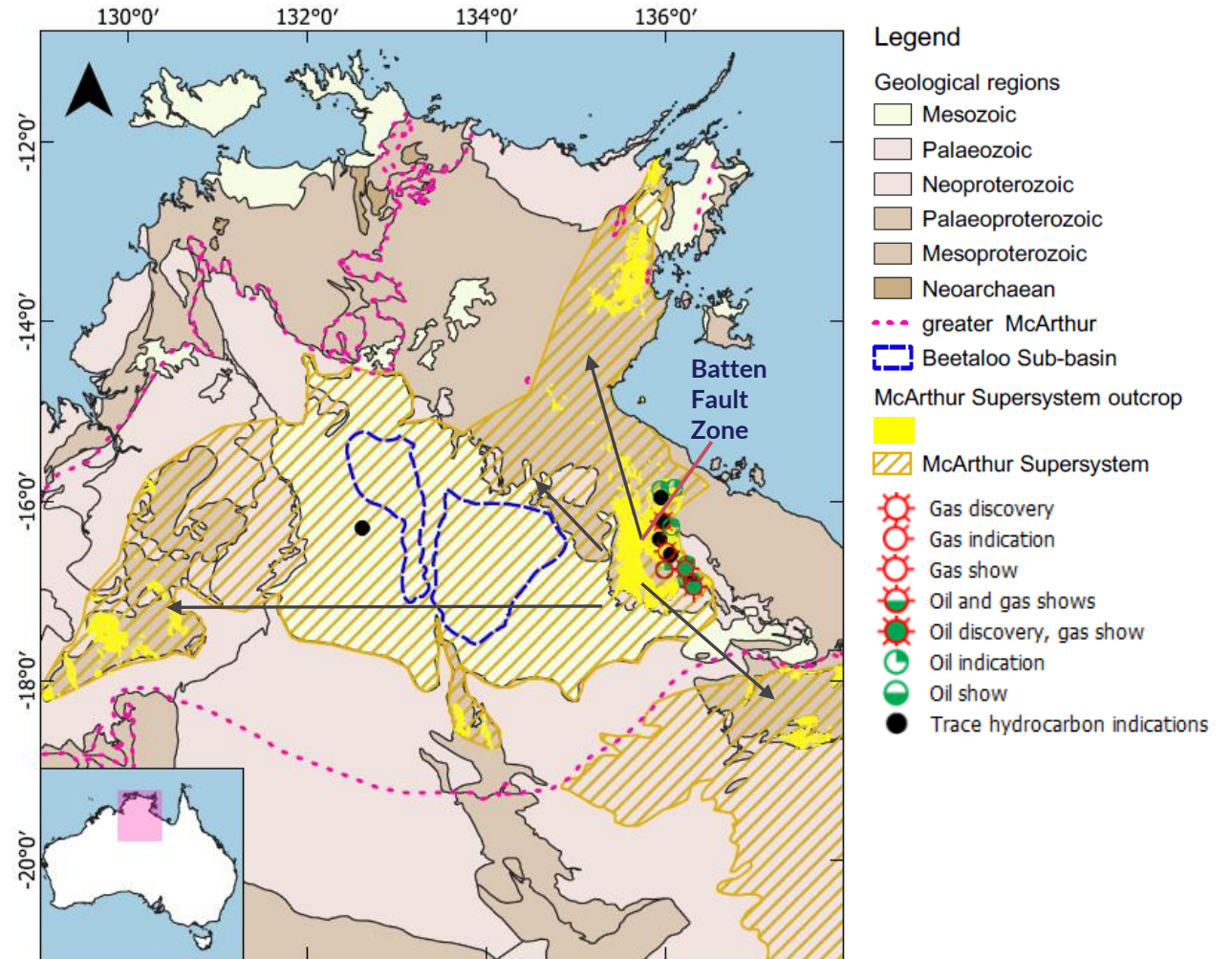
# Petroleum supersystems (continent to basin scales)



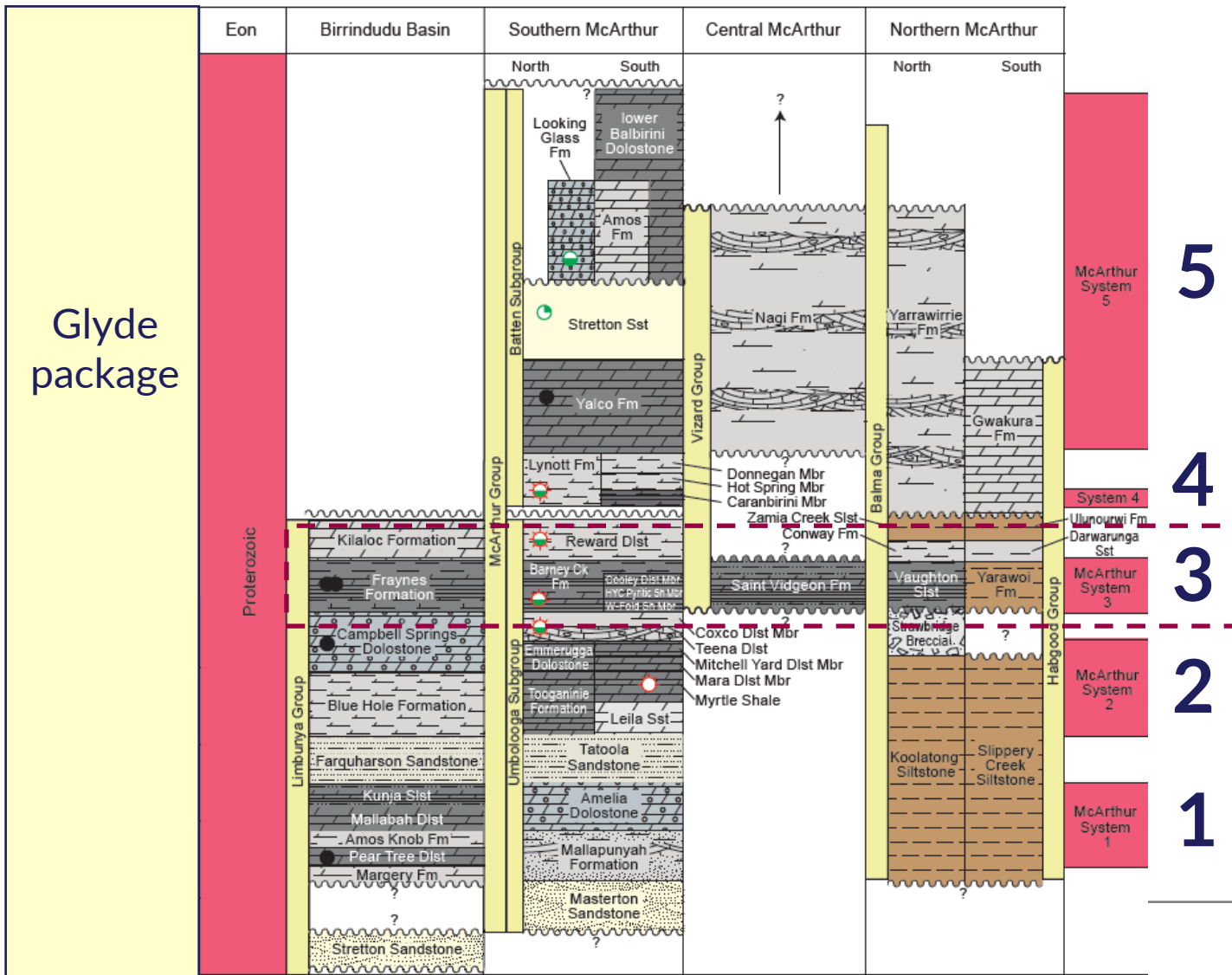
# Petroleum Supersystem (continent to basin scale)

## McArthur Supersystem

- Named by Bradshaw *et al.* (1994)
- Includes Paleoproterozoic shales from the Birrindudu and McArthur basins and the Lawn Hill Platform
- Multiple discoveries and hydrocarbon shows in the Batten Fault Zone
- Can predict potential systems in frontier basins or regions of the greater McArthur Basin
- Uncertainties beneath cover due to minimal well penetration and seismic

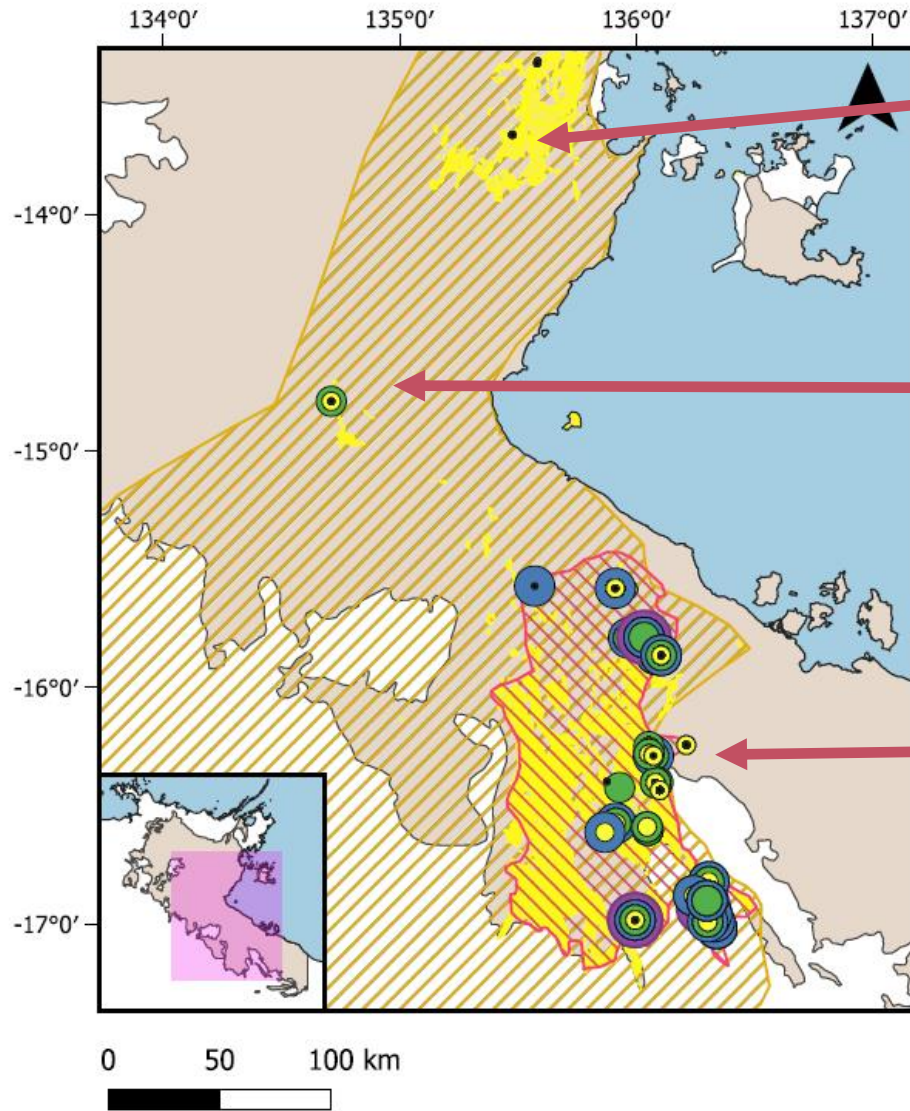


# McArthur systems



- McArthur Supersystem contains five systems
- All have excellent source rock potential (TOC >5%)
- Barney Creek Formation has best well penetration, thus is best defined
- Higher uncertainties in the central and northern McArthur Basin because of no/poor well control
- Can our understanding of Barney Creek Formation be used to make predictions on contemporaneous shales?

# McArthur System 3

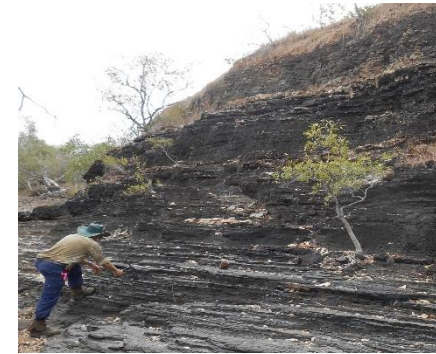


## Legend

- greater McArthur polygons
- McArthur Basin
- McArthur Supersystem
- Barney Creek Formation
- McArthur Supersystem outcrop

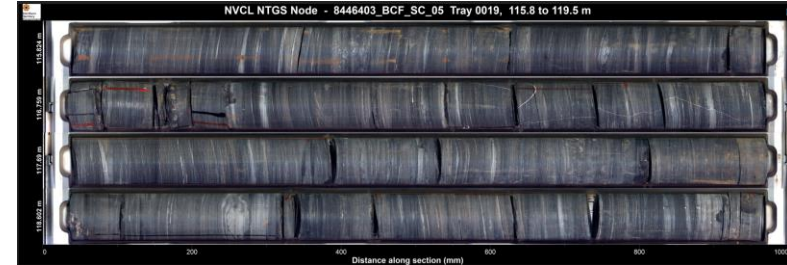
## McArthur Supersystem TOC%

- 0 - 1
- 1 - 2
- 2 - 4
- 4 - 10
- 10 - 100



**Vaughton Siltstone**  
(outcrop only)  
Maximum TOC 1.3%

**BCF SC 04- Saint Vidgeon Formation**  
Imperial Energy and NTGS drilling collaboration hole  
Maximum TOC 1.5% (overmature)



## Barney Creek Formation

Maximum TOC >10%  
Oil and gas prone source rocks

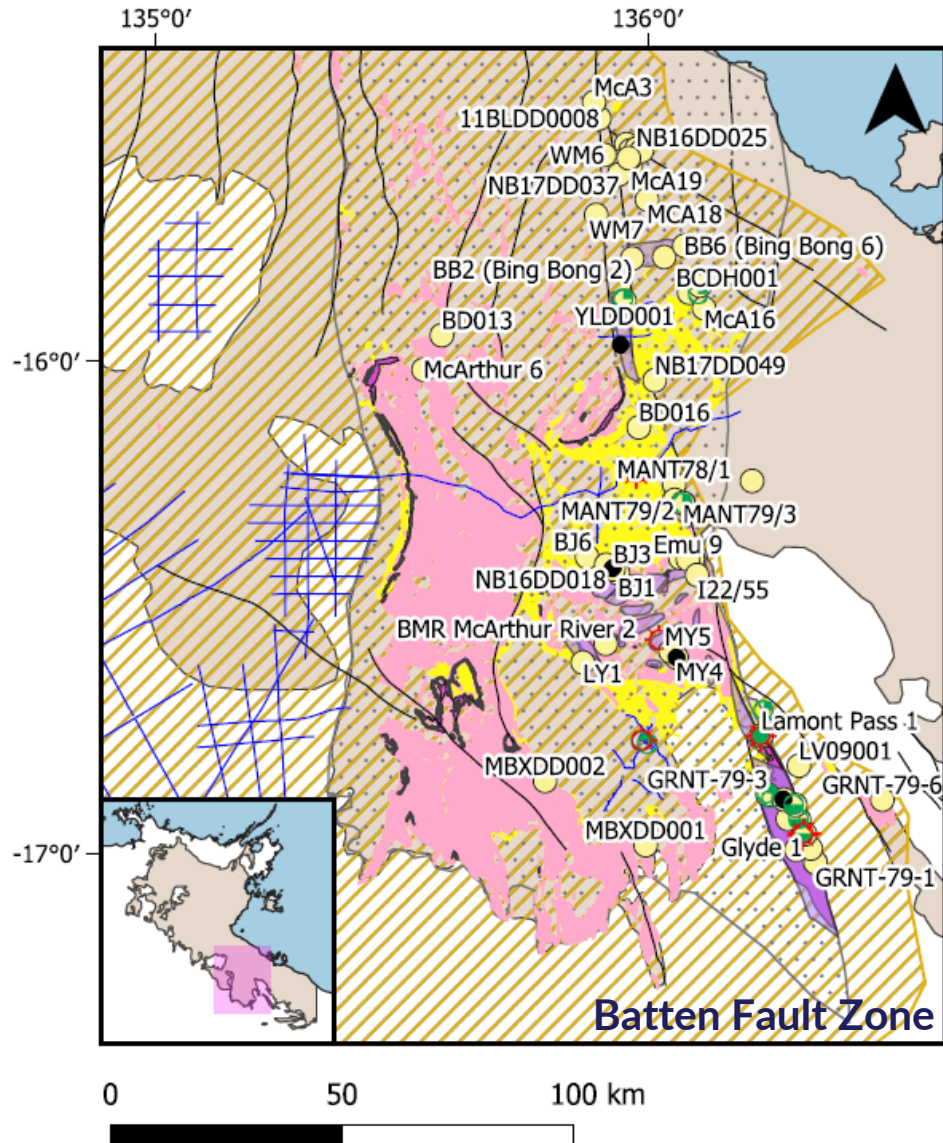


## Glyde 1 gas flare



# Petroleum systems (basin- to prospect-scale)

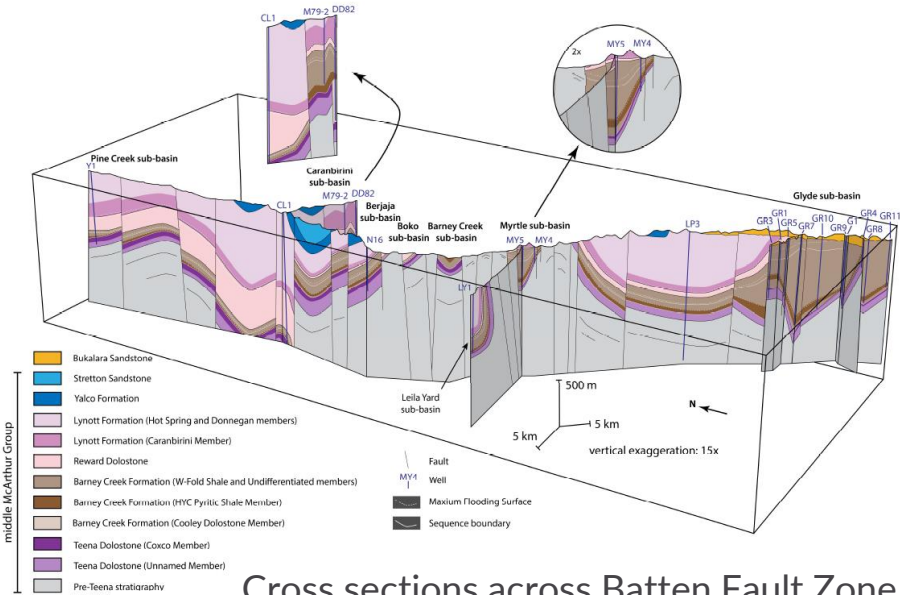
## McArthur System 3 focus



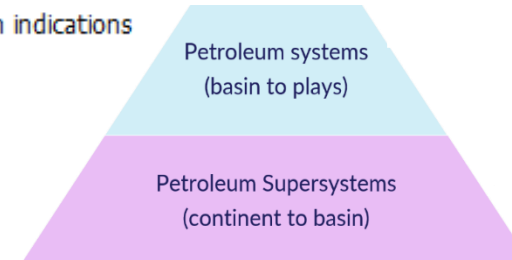
### Legend

- greater McArthur polygons
- McArthur Basin
- McArthur Supersystem
- Major faults
- Sub basins
- Umbolonga Subgroup outcrop
- Predicted lithology
- Barney Creek Formation
- Barney Creek Formation outcrop
- Barney Creek Formation
- Gas discovery
- Gas indication
- Gas show
- Oil and gas shows
- Oil discovery, gas show
- Oil indication
- Oil show
- Trace hydrocarbon indications

- Hydrocarbon discoveries, shows and flows
- Thickest and deepest sections in structural sub-basins



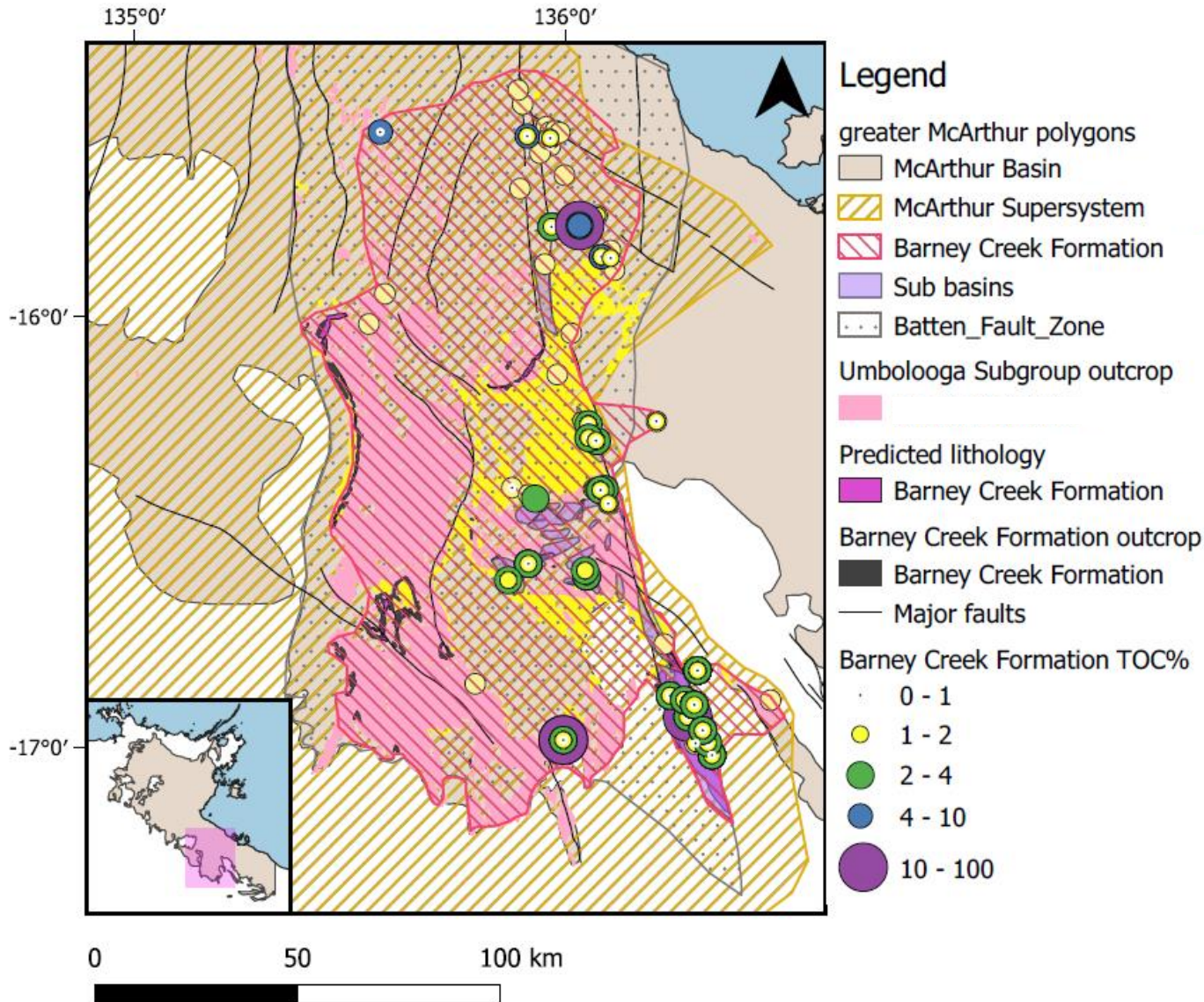
Cross sections across Batten Fault Zone  
Kunzmann *et al.* (2019)  
NTGS Record 2019-016





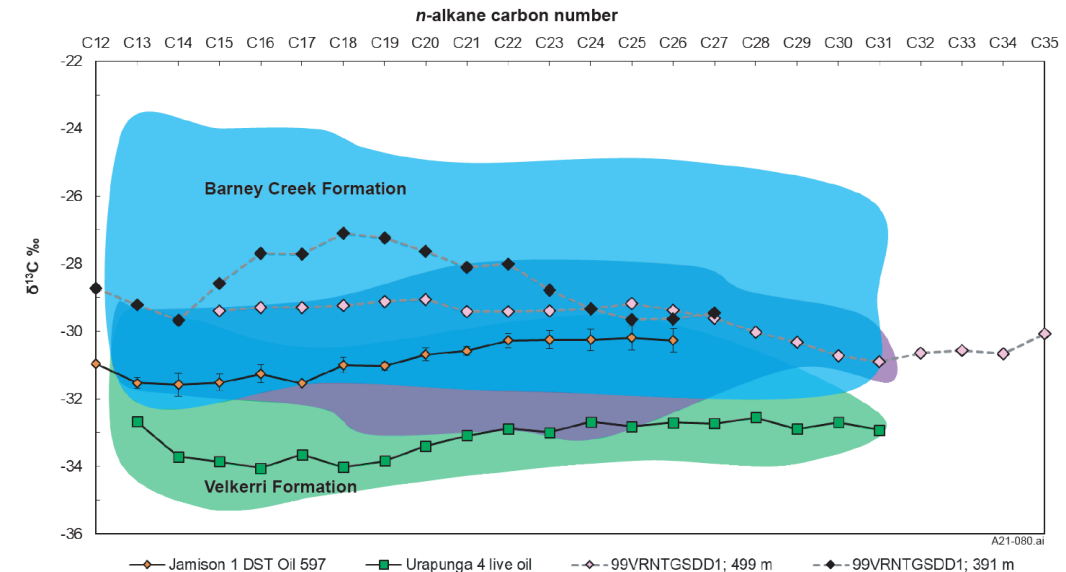
# Petroleum systems (basin to prospect scale)

## McArthur System 3 focus

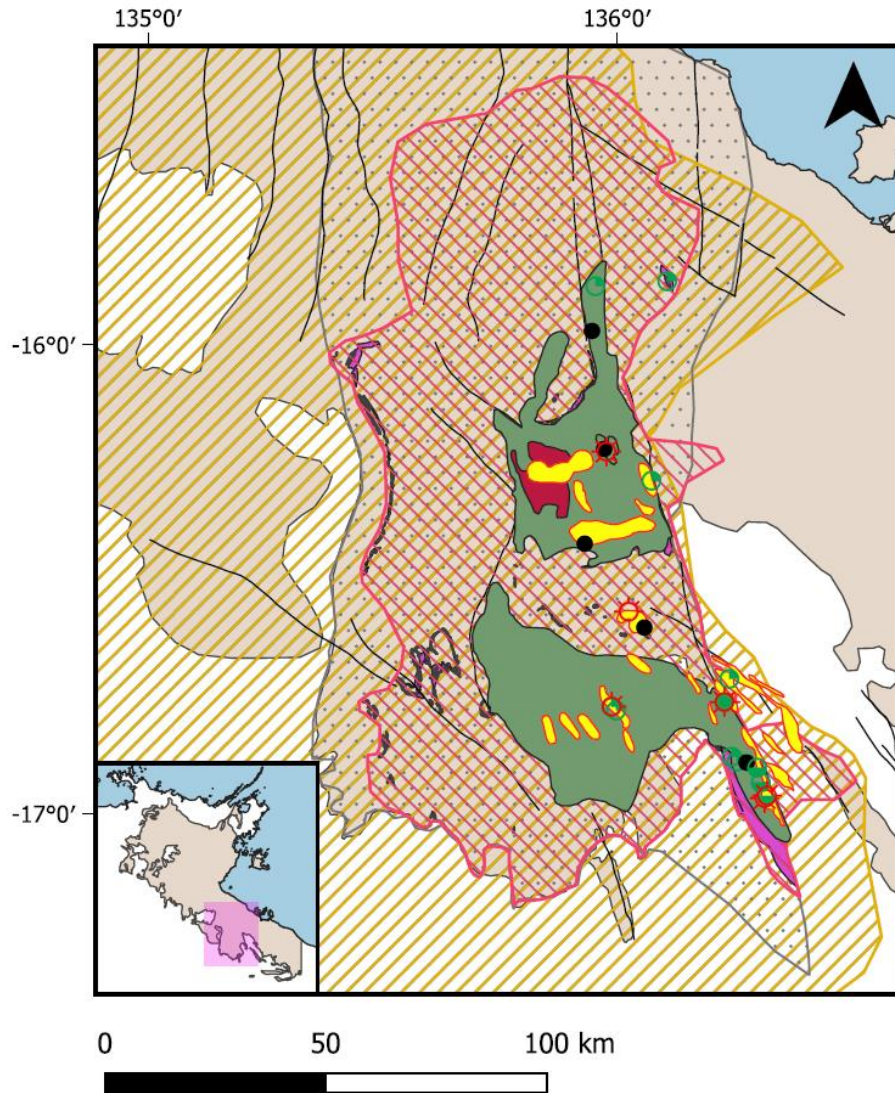


- McArthur System 3 extent based on outcrop, seismic and intersecting wells
- Good to excellent TOC throughout the basin
- Detailed geochemistry for Barney Creek Formation and related oils and source rocks (Jarrett *et al.* 2019 AGES)

### McArthur Supersystem 3 Oil and source rock geochemistry available



# Petroleum play types (play- to prospect-scale)



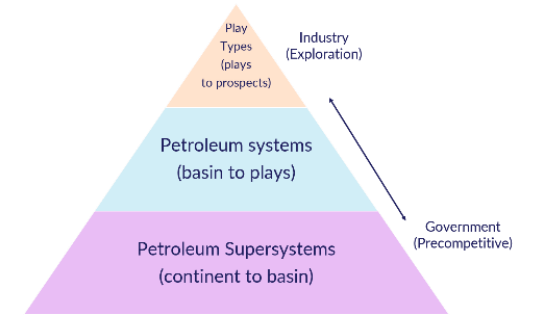
## Legend

### Geological regions

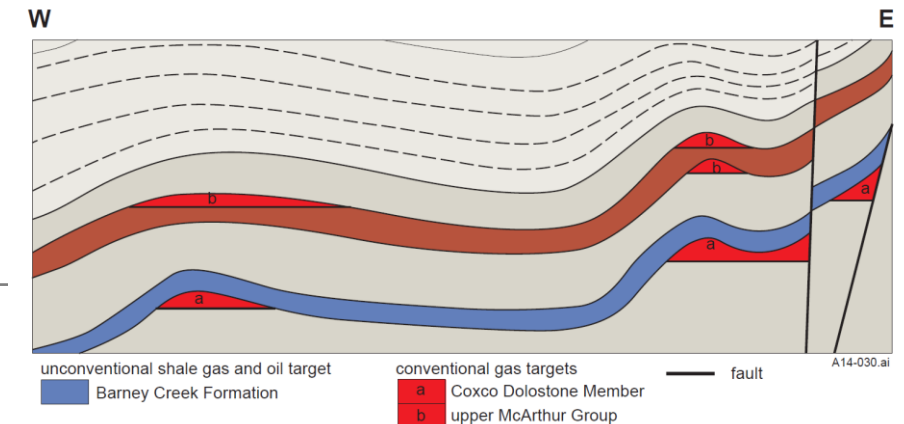
- Mesozoic
- Neoproterozoic to Palaeozoic
- Palaeoproterozoic
- Neoarchaean
- McArthur Supersystem

### Major faults

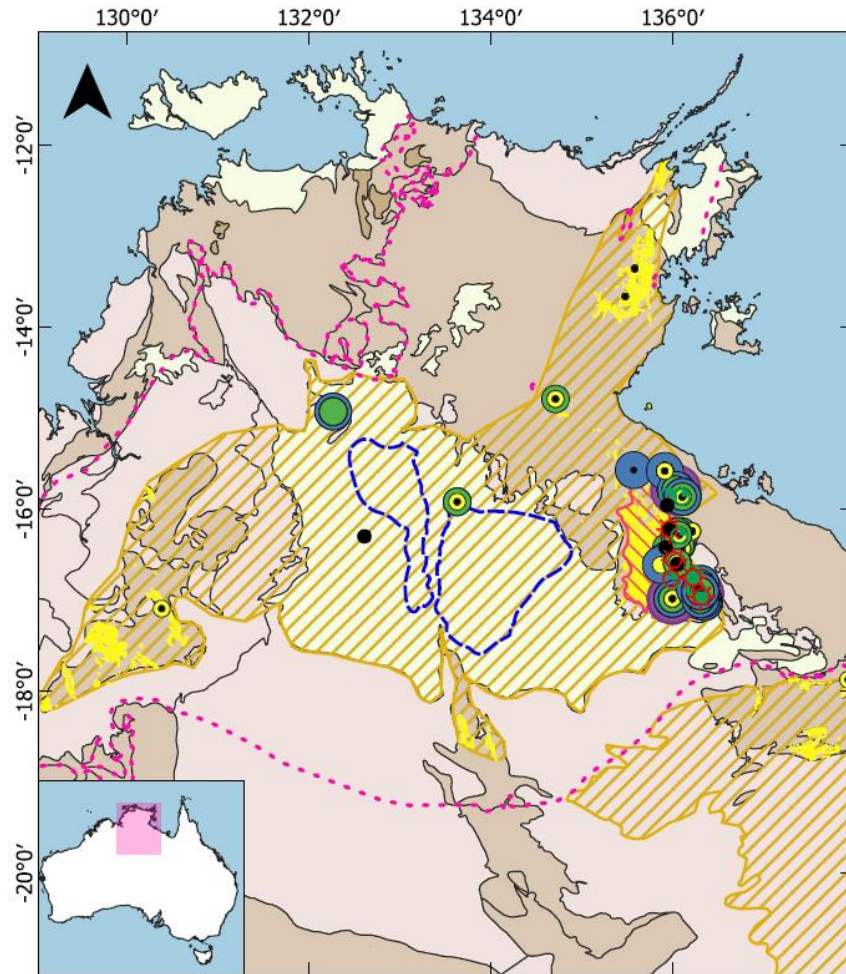
- Barney Creek Formation drillcore intersections
- Barney Creek Formation extent
- Barney Creek - Teena/Reward(!) leads
- Barney Creek - dry shale gas play
- Barney Creek - wet shale gas play
- Gas discovery
- Gas indication
- Gas show
- Oil and gas shows
- Oil discovery, gas show
- Oil indication
- Oil show
- Trace hydrocarbon indications



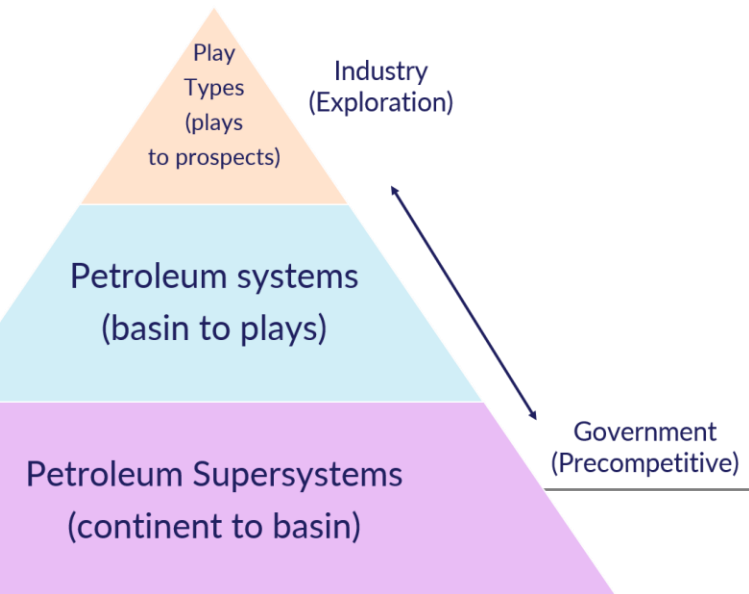
- Conventional gas plays
- Unconventional wet and dry gas leads
- Challenges still exist in correlating units across the basin and testing these plays



# Summary and next steps



- We present a new exploration framework across the greater McArthur Basin
- Petroleum system framework will be released as an NTGS Record
- Challenges still exist in correlating units across the greater McArthur Basin and testing these plays
- Systems have the flexibility to be updated as required



# Thank you

Any questions please email  
[Amber.Jarrett@nt.gov.au](mailto:Amber.Jarrett@nt.gov.au)



'Fossilised Koala'  
Caranbirini Mbr,  
Photo: J.J. Brocks