

Supplementary Material

Synthesis and Characterization of Photolabile SPhNPPOC-Protected (*R*)-MiniPEG Containing Chiral γ -Peptide Nucleic Acid Monomers

Qingteng Lai,^A Bo Dong,^{A,B} Kaixuan Nie,^{A,B} Huanhuan Shi,^{A,B} Bo Liang,^C and Zhengchun Liu^{A,B,D}

^AHunan Key Laboratory for Super Microstructure and Ultrafast Process, Department of Electronic Information Science and Technology, School of Physics and Electronics, Central South University, Changsha, Hunan 410083, China.

^BSchool of Basic Medical Science, Central South University, Changsha, Hunan 410083, China.

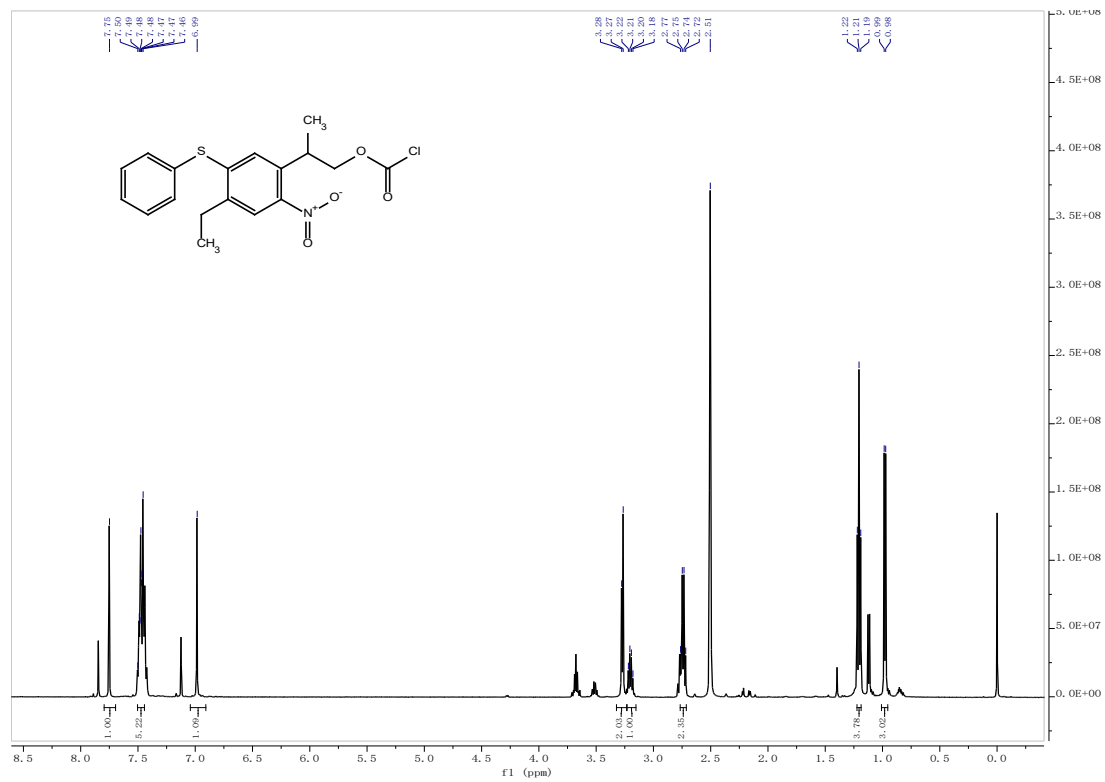
^CState Engineering Laboratory of Highway Maintenance Technology, School of Traffic and Transportation Engineering, Changsha University of Science and Technology, Changsha, Hunan 410114, China.

^DCorresponding author. Email: liuzhengchunseu@126.com

Content

1. ¹ HNMR of SPhNPPOC-Cl	2
2. ¹ HNMR of SPhNPPOC-MP-A-OH	3
3. ¹³ CNMR of SPhNPPOC-MP-A-OH	3
4. ESI-MS of SPhNPPOC-MP-A-OH	4
5. ¹ HNMR of SPhNPPOC-MP-G-OH	4
6. ¹³ CNMR of SPhNPPOC-MP-G-OH	5
7. ESI-MS of SPhNPPOC-MP-G-OH	5
8. ¹ HNMR of SPhNPPOC-MP-C-OH	6
9. ¹³ CNMR of SPhNPPOC-MP-C-OH	6
10. ESI-MS of SPhNPPOC-MP-C-OH	7
11. ¹ HNMR of SPhNPPOC-MP-T-OH	7
12. ¹³ CNMR of SPhNPPOC-MP-T-OH	8
13. ESI-MS of SPhNPPOC-MP-T-OH	8
14. ESI-MS of photo-deprotected SPhNPPOC-MP-T-OH	8

1. ¹H NMR of SPhNPPOC-Cl



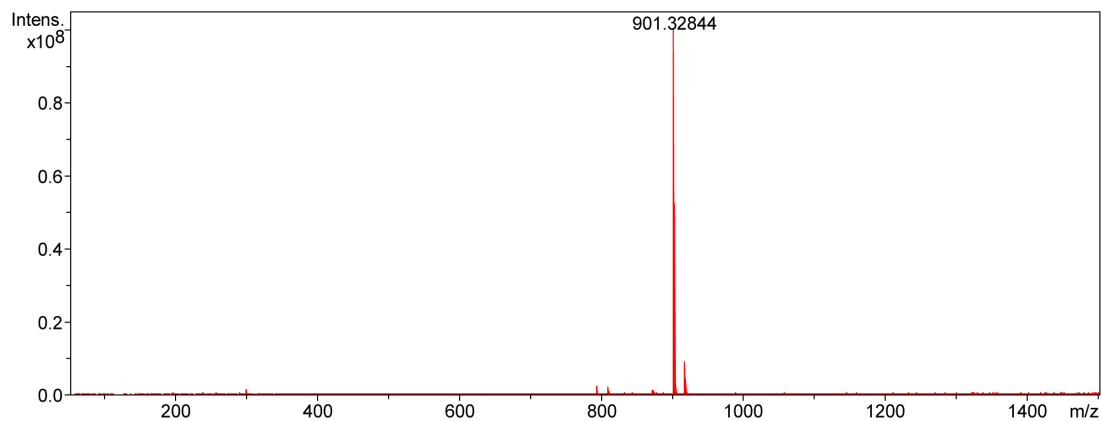
4. ESI-MS of SPhNPOC-MP-A-OH

Chemical Formula: C₄₃H₅₀N₈O₁₂S

Exact Mass: 902.32689

Calcd. [M-H]⁻: 901.31961

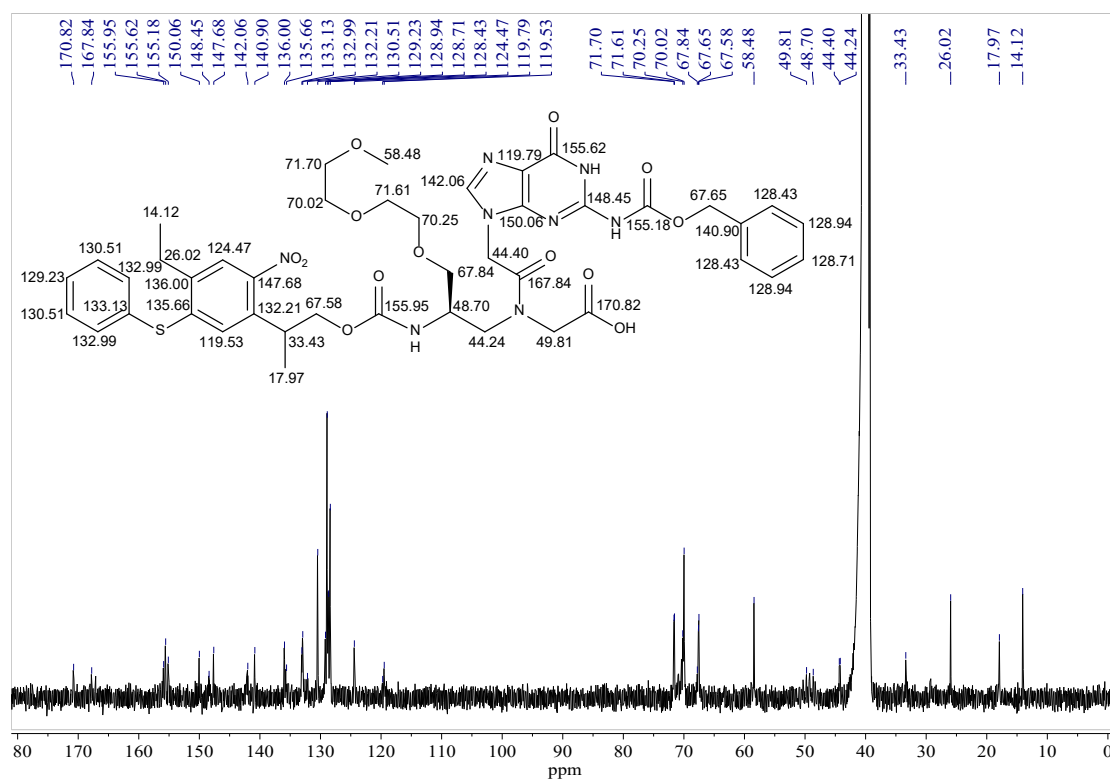
Found: 901.32844



5. ¹H NMR of SPhNPOC-MP-G-OH



6. ¹³CNMR of SPhNPOC-MP-G-OH



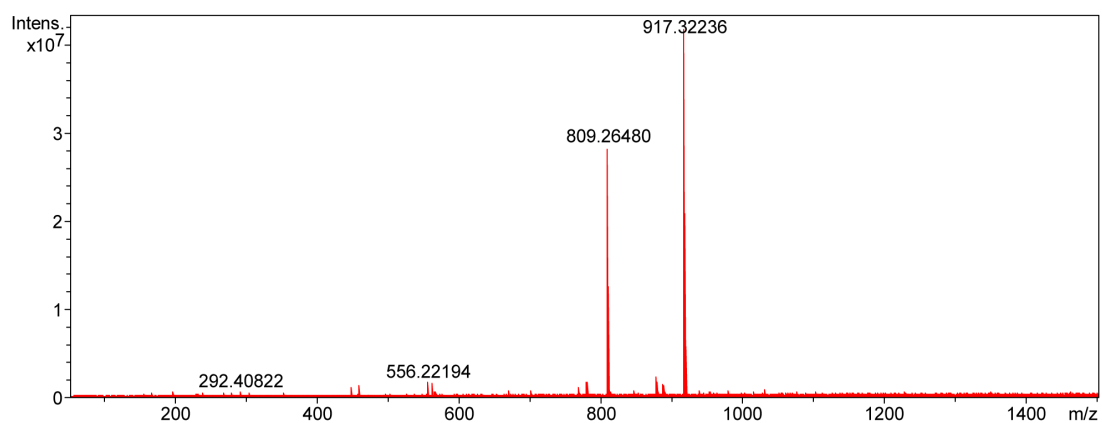
7. ESI-MS of SPhNPOC-MP-G-OH

Chemical Formula: C₄₃H₅₀N₈O₁₃S

Exact Mass: 918.32180

Calcd. [M-H]⁻: 917.31453

Found: 917.32236



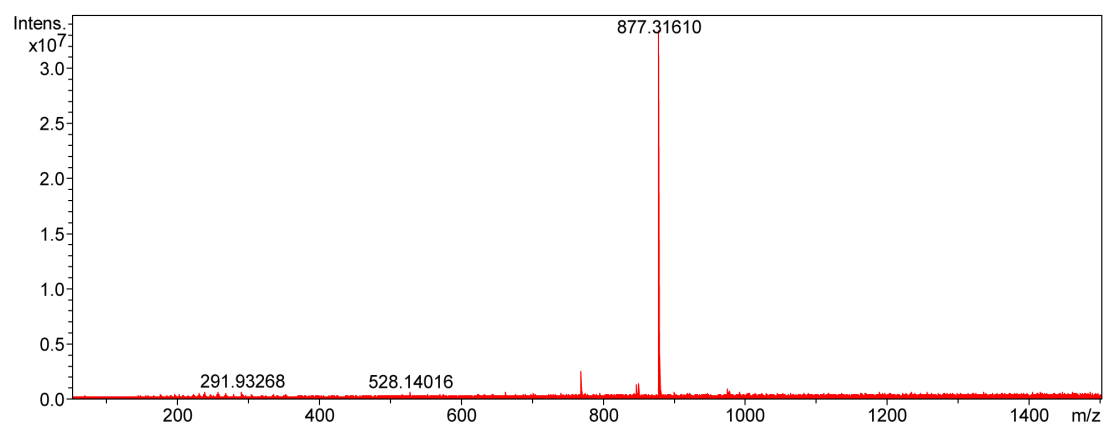
10. ESI-MS of SPhNPPOC-MP-C-OH

Chemical Formula: C₄₂H₅₀N₆O₁₃S

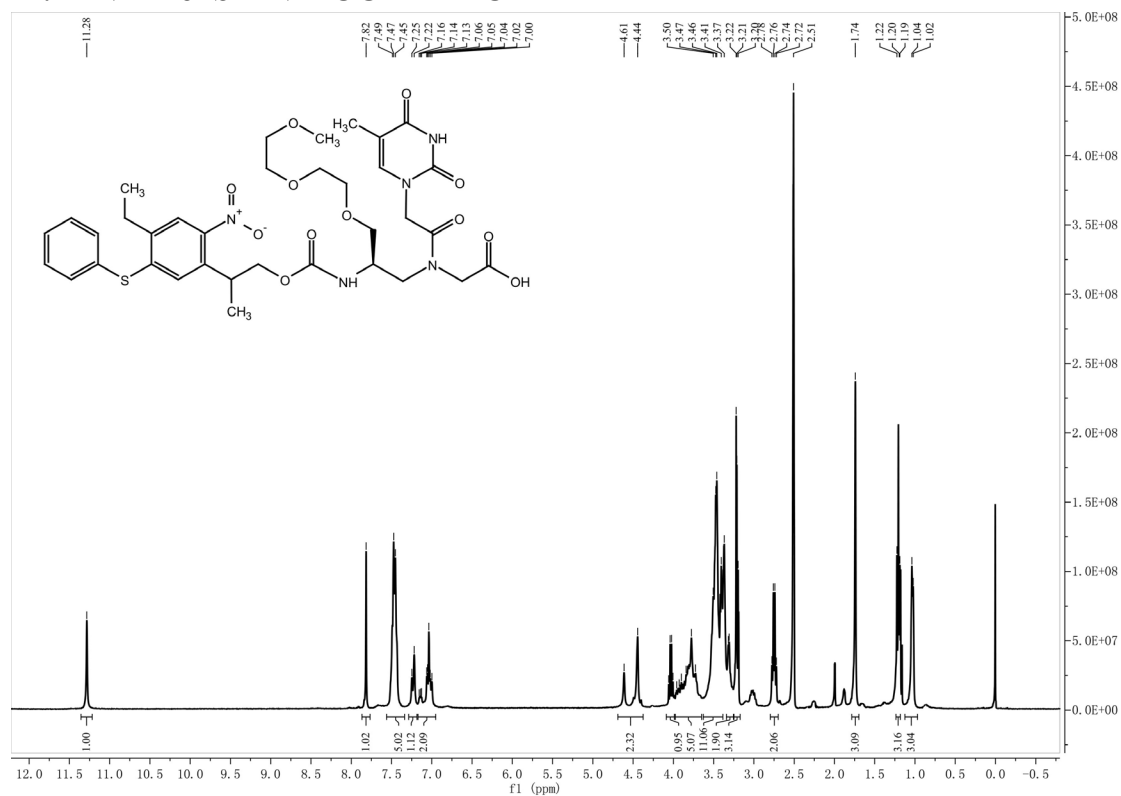
Exact Mass: 878.31566

Calcd. [M-H]⁻: 877.30838

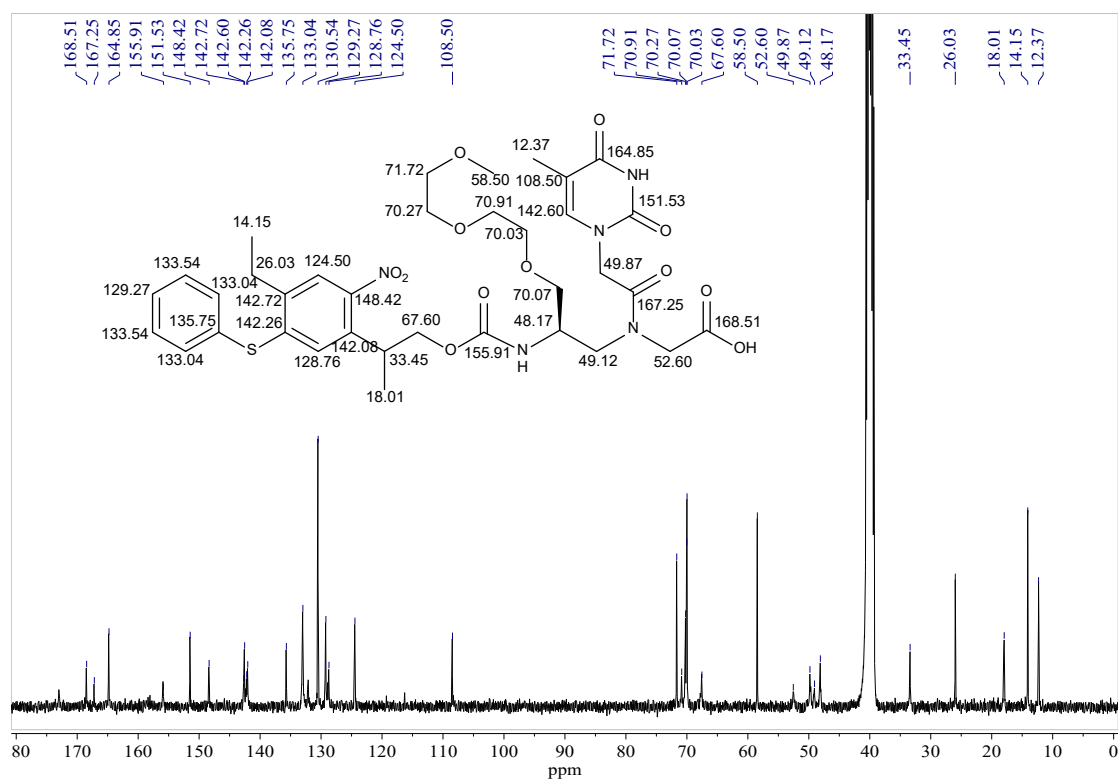
Found: 877.31610



11. ¹H NMR of SPhNPPOC-MP-T-OH



12. ^{13}C NMR of SPhNPPOC-MP-T-OH



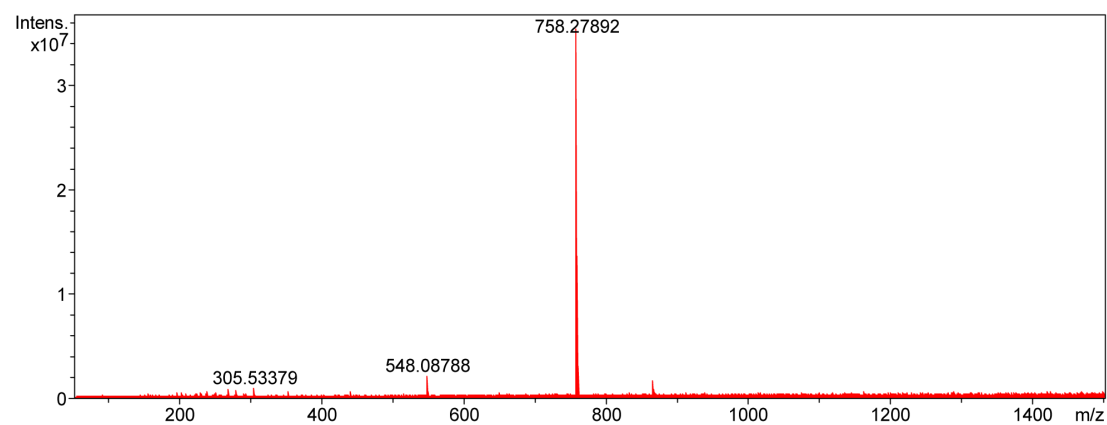
13. ESI-MS of SPhNPPOC-MP-T-OH

Chemical Formula: $\text{C}_{35}\text{H}_{45}\text{N}_5\text{O}_{12}\text{S}$

Exact Mass: 759.27854

Calcd. $[\text{M}-\text{H}]^-$: 758.27127

Found: 758.27892



14. ESI-MS of photo-deprotected SPhNPPOC-MP-T-OH

Chemical Formula: $\text{C}_{17}\text{H}_{28}\text{N}_4\text{O}_8$

Exact Mass: 416.19071

Calcd1. $[\text{M}+\text{H}]^+$: 417.197990

Found: 417.19727

Calcd2. $[\text{M}+\text{K}]^+$: 455.28901

Found: 455.14375

