

SUPPLEMENTARY MATERIAL FOR:

**New, Homochiral Synthons Obtained Through Simple Manipulations of
Enzymatically-Derived 3-Halo-*cis*-1,2-dihydrocatechols**

Lorenzo V. White,^A Ping Lan,^A Brett D. Schwartz,^A Anthony C. Willis,^A and Martin G. Banwell^{A,B}

^AResearch School of Chemistry, Institute of Advanced Studies, The Australian National University, Canberra ACT 0200, Australia.

^BCorresponding author. Email: Martin.Banwell@anu.edu.au

Contents	Page
– Anisotropic Displacement Ellipsoid Plots for Compound 3a	S2
– ¹ H and ¹³ C NMR Spectra of Compounds 2a, 3a, 3b, 7a, 8a and 9a	S4

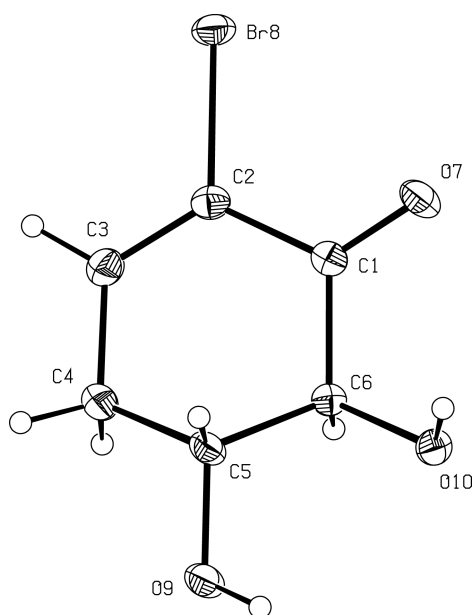


Figure S1: Structure of molecule 1 of compound **3a** (CCDC 1045882) with labelling of selected atoms. Anisotropic displacement ellipsoids show 30% probability levels. Hydrogen atoms are drawn as circles with small radii.

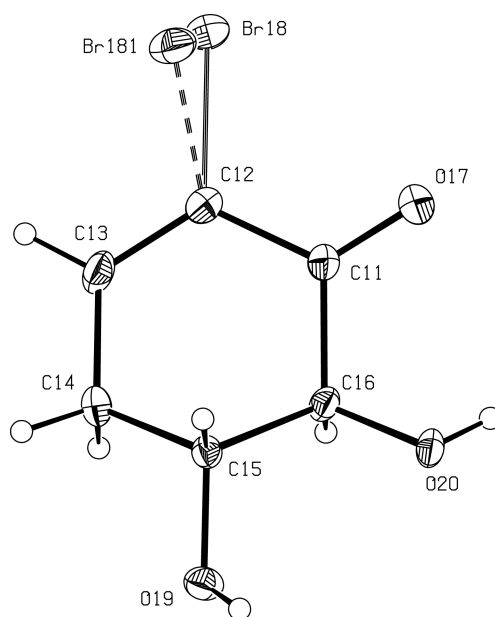


Figure S2: Structure of molecule 2 of compound **3a** (CCDC 1045882) with labelling of selected atoms and showing the disorder (Br18, occupancy 0.87; Br181, occupancy 0.13). Anisotropic displacement ellipsoids show 30% probability levels. Hydrogen atoms are drawn as circles with small radii.

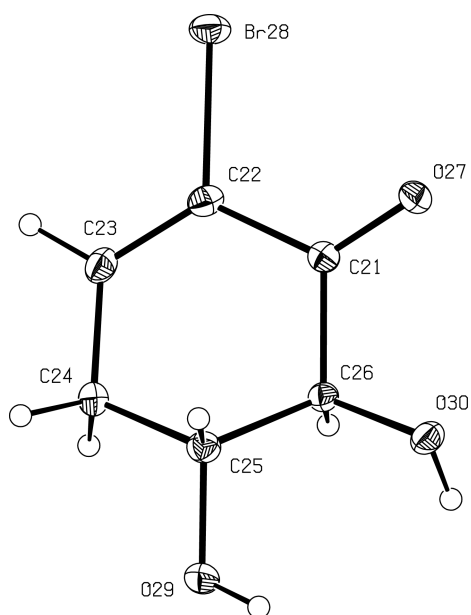


Figure S3: Structure of molecule 3 of compound **3a** (CCDC 1045882) with labelling of selected atoms. Anisotropic displacement ellipsoids show 30% probability levels. Hydrogen atoms are drawn as circles with small radii.

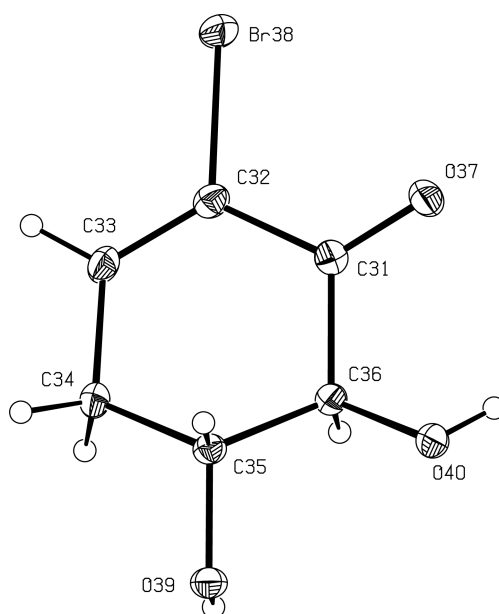
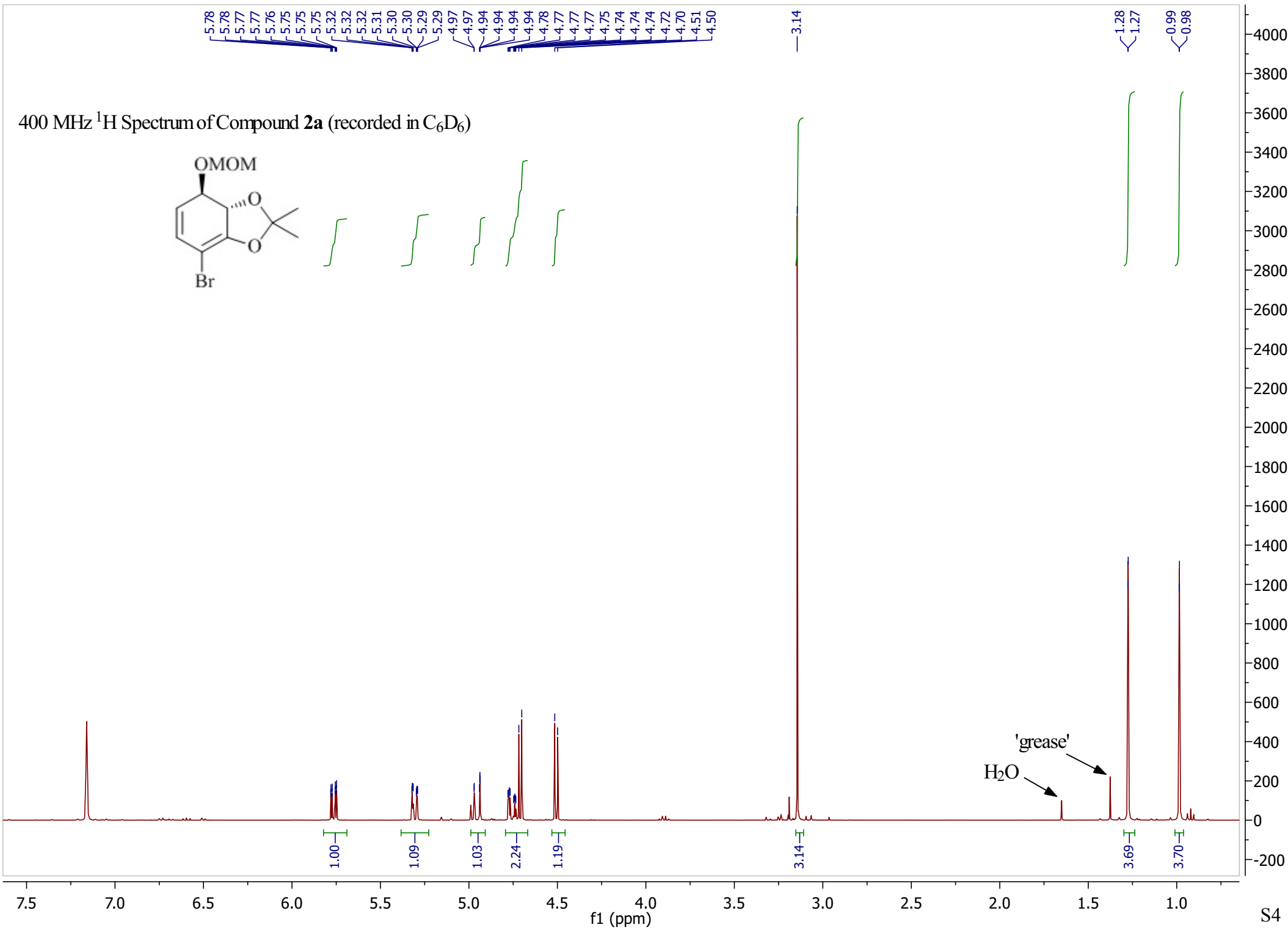
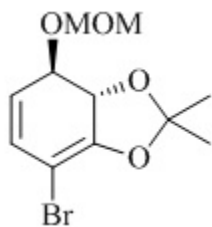
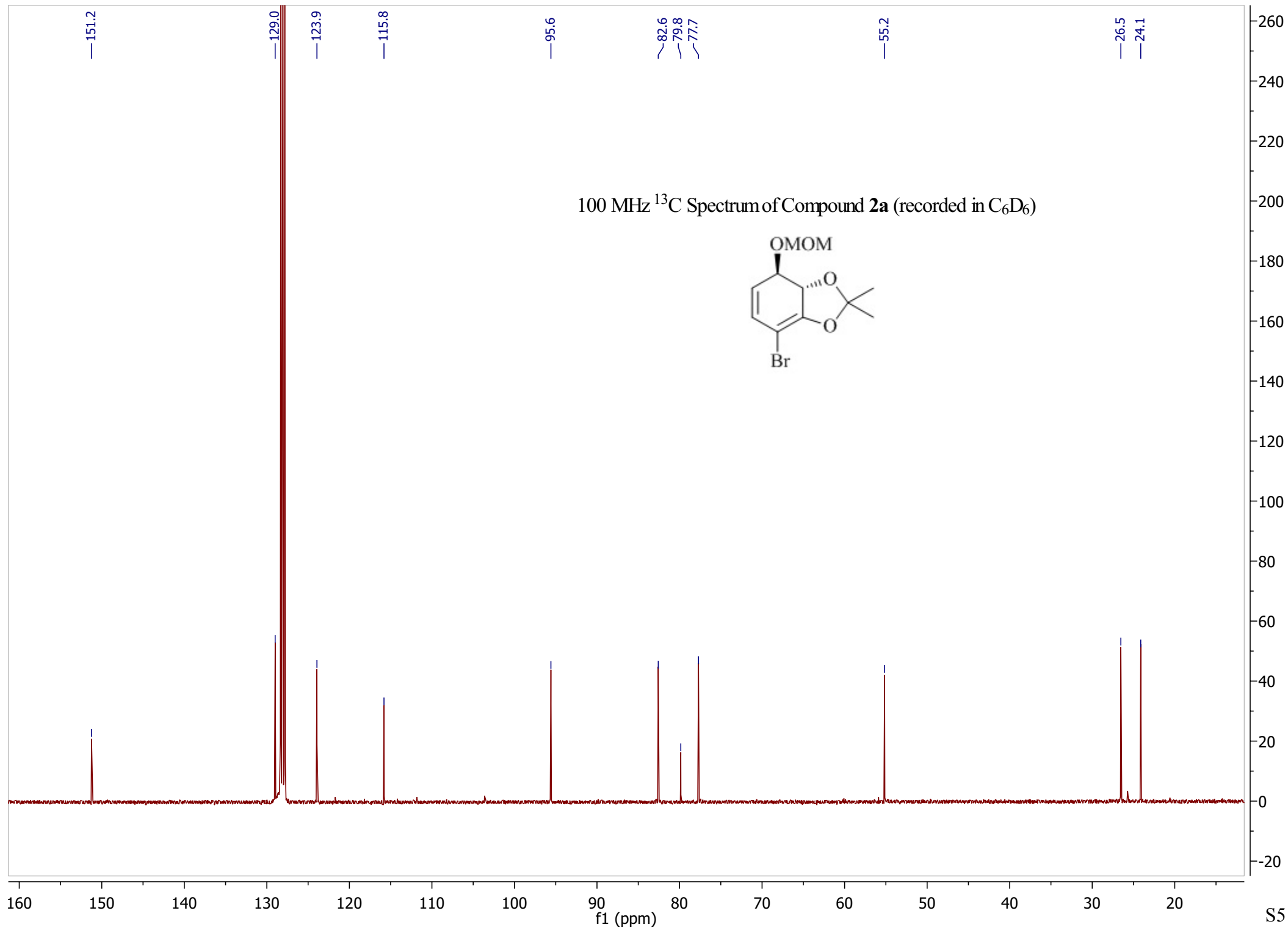


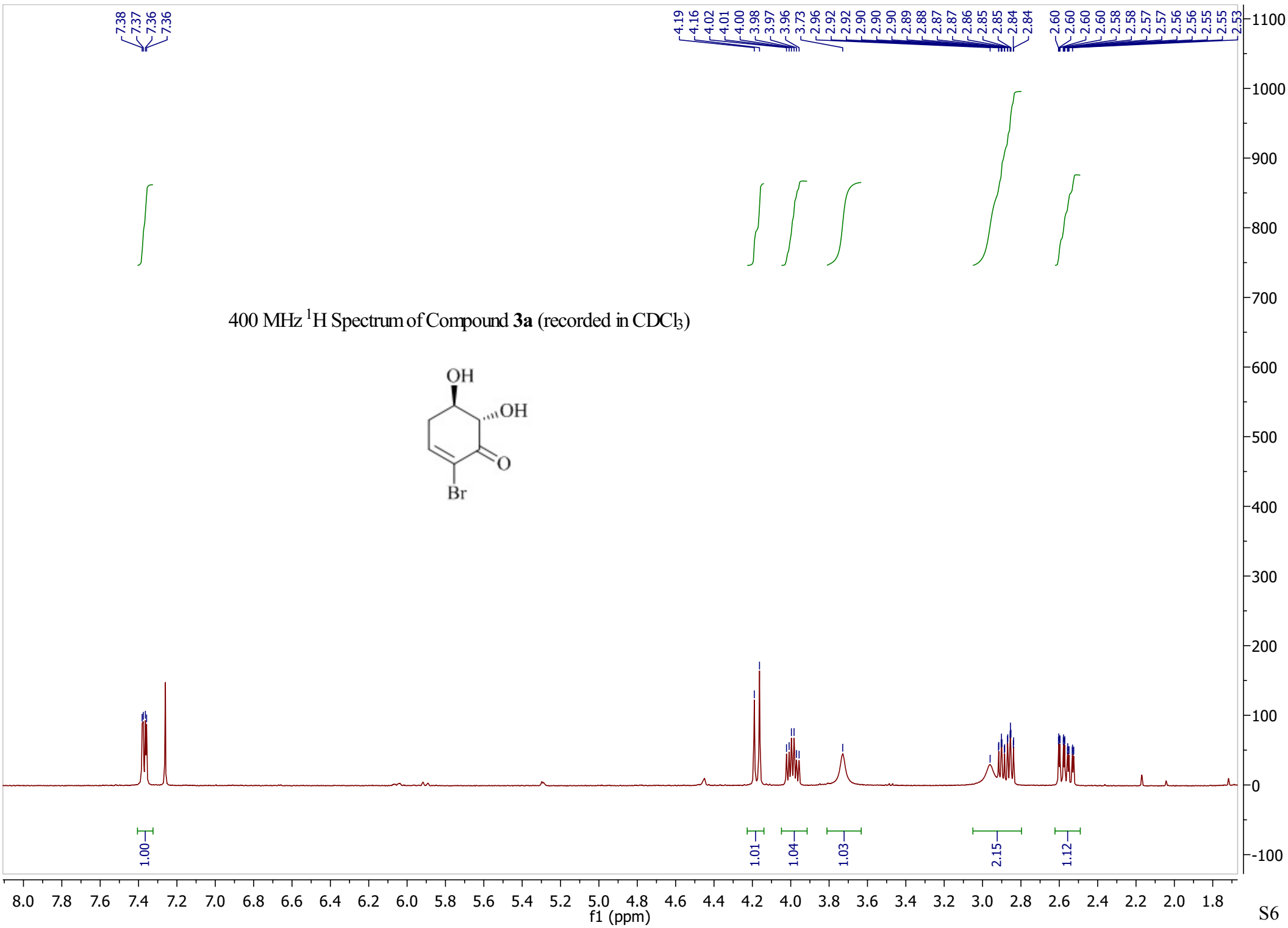
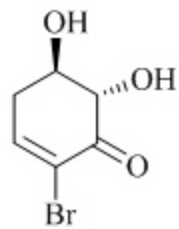
Figure S4: Structure of molecule 4 of compound **3a** (CCDC 1045882) with labelling of selected atoms. Anisotropic displacement ellipsoids show 30% probability levels. Hydrogen atoms are drawn as circles with small radii.

400 MHz ^1H Spectrum of Compound **2a** (recorded in C_6D_6)

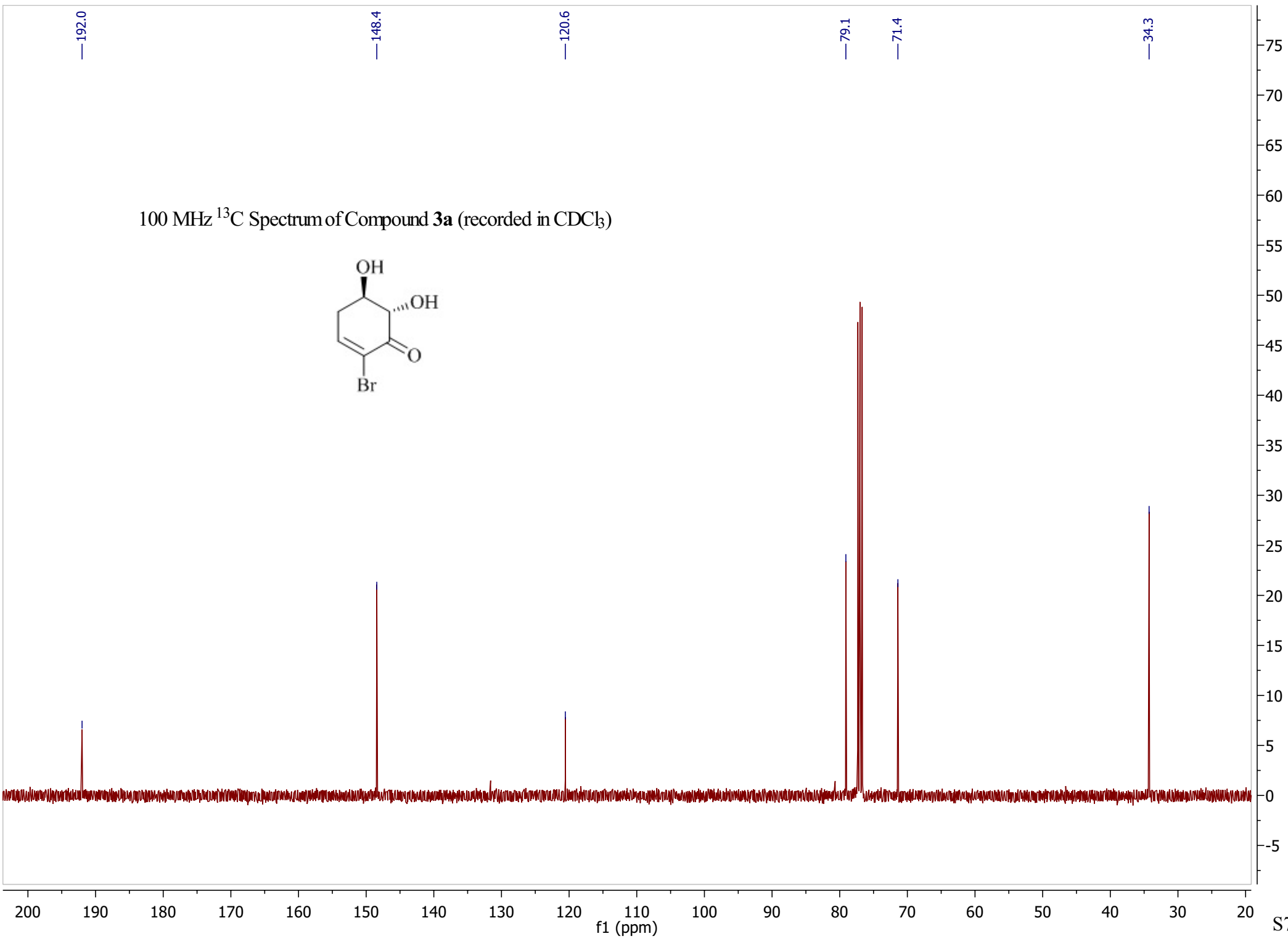
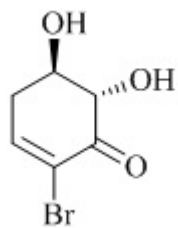




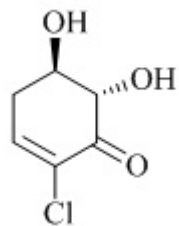
400 MHz ¹H Spectrum of Compound **3a** (recorded in CDCl₃)



100 MHz ^{13}C Spectrum of Compound **3a** (recorded in CDCl_3)



400 MHz ^1H Spectrum of Compound **3b** (recorded in CDCl_3)



7.13
7.13
7.13
7.12
7.11
7.11
7.11

4.18
4.15
4.02
4.01
3.99
3.98
3.98
3.97
3.95
3.68

2.94
2.93
2.92
2.91
2.89
2.88
2.87
2.86
2.64
2.63
2.61
2.61
2.59
2.58
2.56
2.56

1.00

1.03

1.11

1.00

2.06

1.15

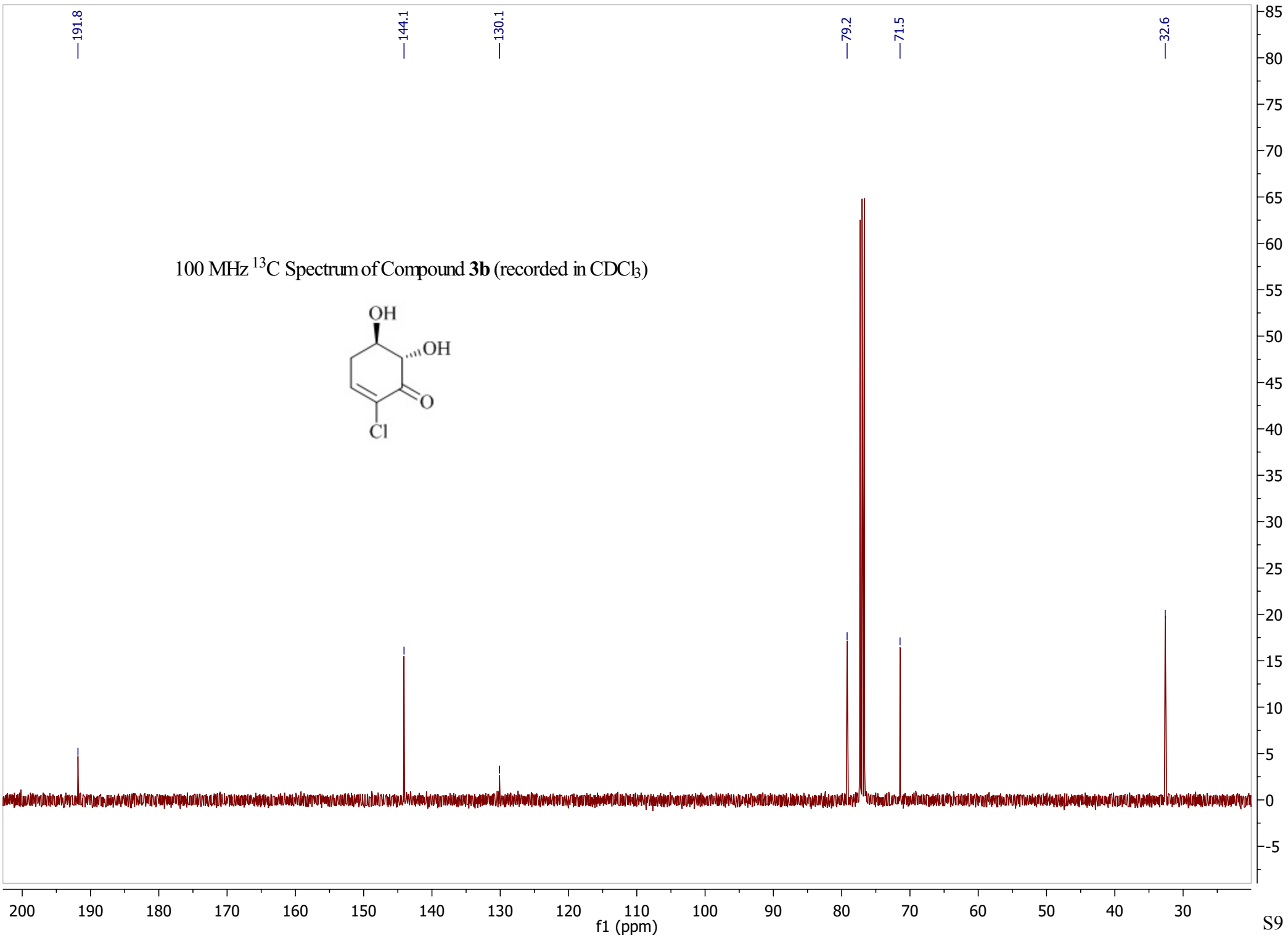
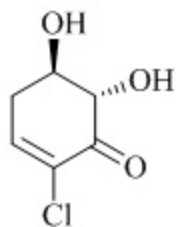
7.8 7.6 7.4 7.2 7.0 6.8 6.6 6.4 6.2 6.0 5.8 5.6 5.4 5.2 5.0 4.8 4.6 4.4 4.2 4.0 3.8 3.6 3.4 3.2 3.0 2.8 2.6 2.4 2.2 2.0

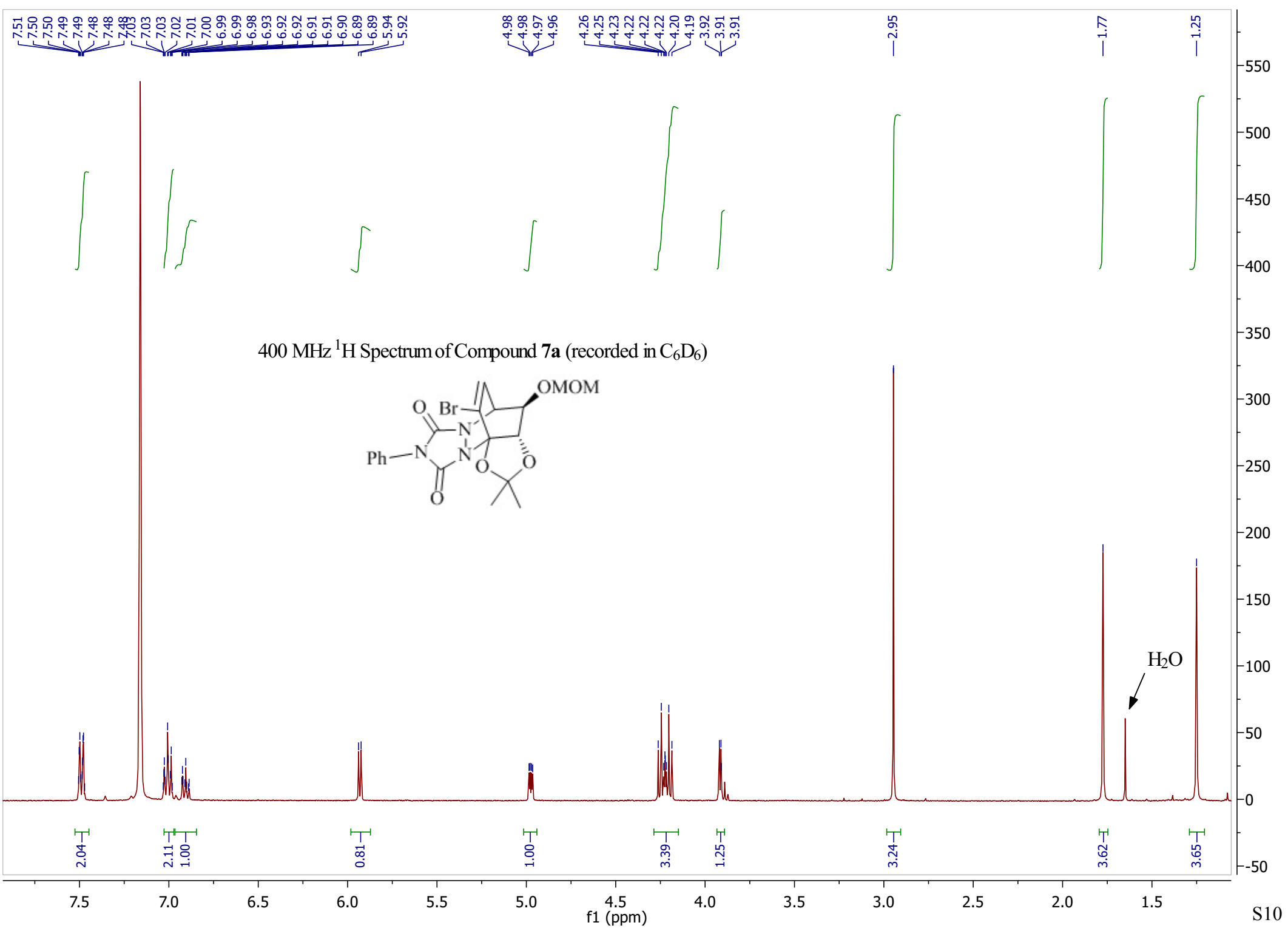
f1 (ppm)

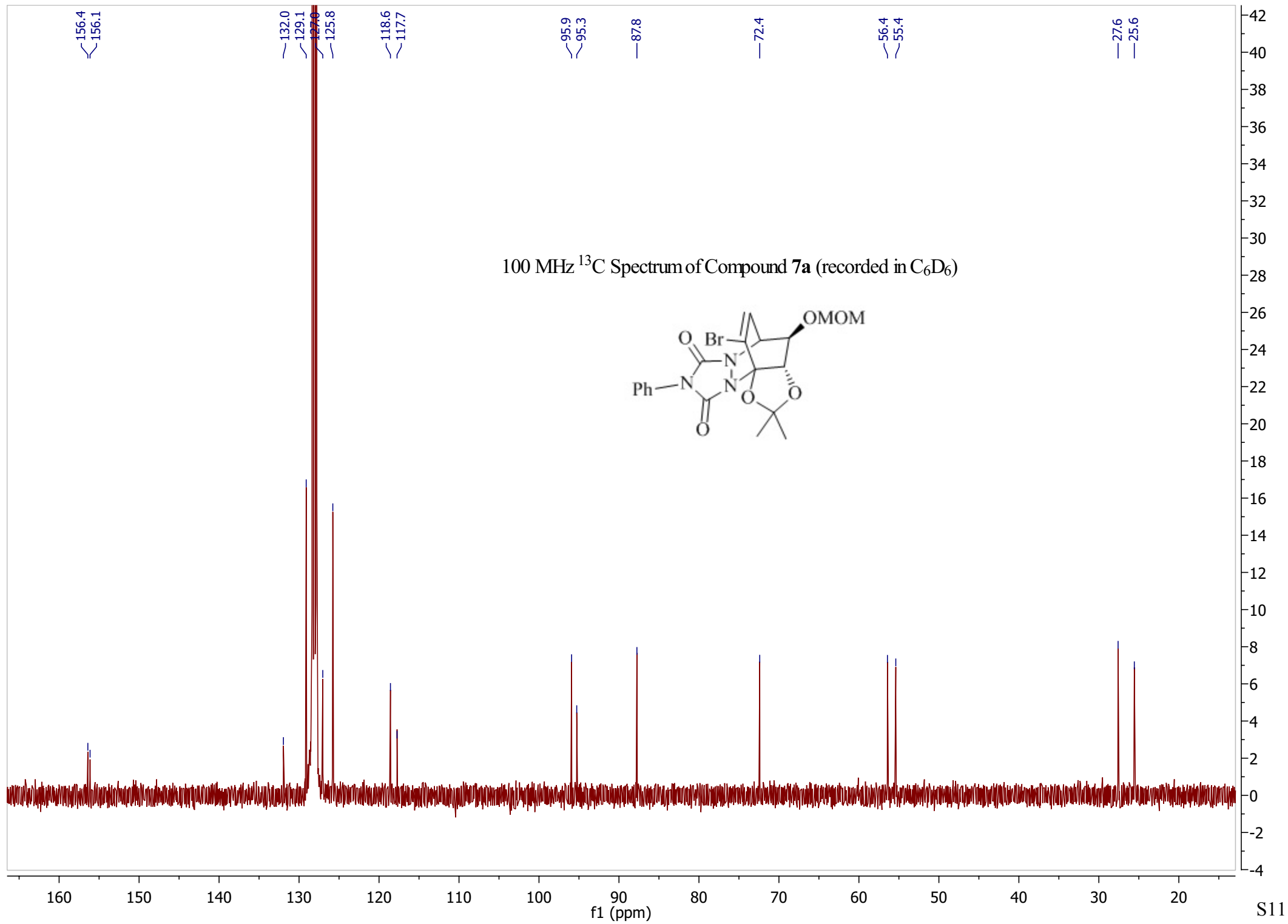
240
230
220
210
200
190
180
170
160
150
140
130
120
110
100
90
80
70
60
50
40
30
20
10
0
-10
-20

S8

100 MHz ^{13}C Spectrum of Compound **3b** (recorded in CDCl_3)







400 MHz ^1H Spectrum of Compound **8a** (recorded in C_6D_6)

