

10.1071/BT18131_AC

© CSIRO 2019

Supplementary material: *Australian Journal of Botany* 2019, 67, 183–193.

**Genetic impacts of habitat loss on the rare Banded Ironstone Formation endemic
Ricinocarpos brevis (Euphorbiaceae)**

Siegfried L. Krauss^{A,B,C} and *Janet Anthony*^{A,B}

^AKings Park Science, Botanic Garden and Parks Authority, Department of Biodiversity, Conservation and Attractions, Kattidj Close, Kings Park, WA 6005, Australia.

^BSchool of Biological Science, The University of Western Australia, Crawley, WA 6009, Australia.

^CCorresponding author. Email: siegy.krauss@dbca.wa.gov.au

Fig S1a. *Ricinocarpus brevis* collection sites from Windarling Range (W2, W3, W4). Each dot indicates the location of a plant (yellow indicates a sampled plant), and each cluster of yellow dots represents a population. Population codes are indicated (see Table 2 in the main text).

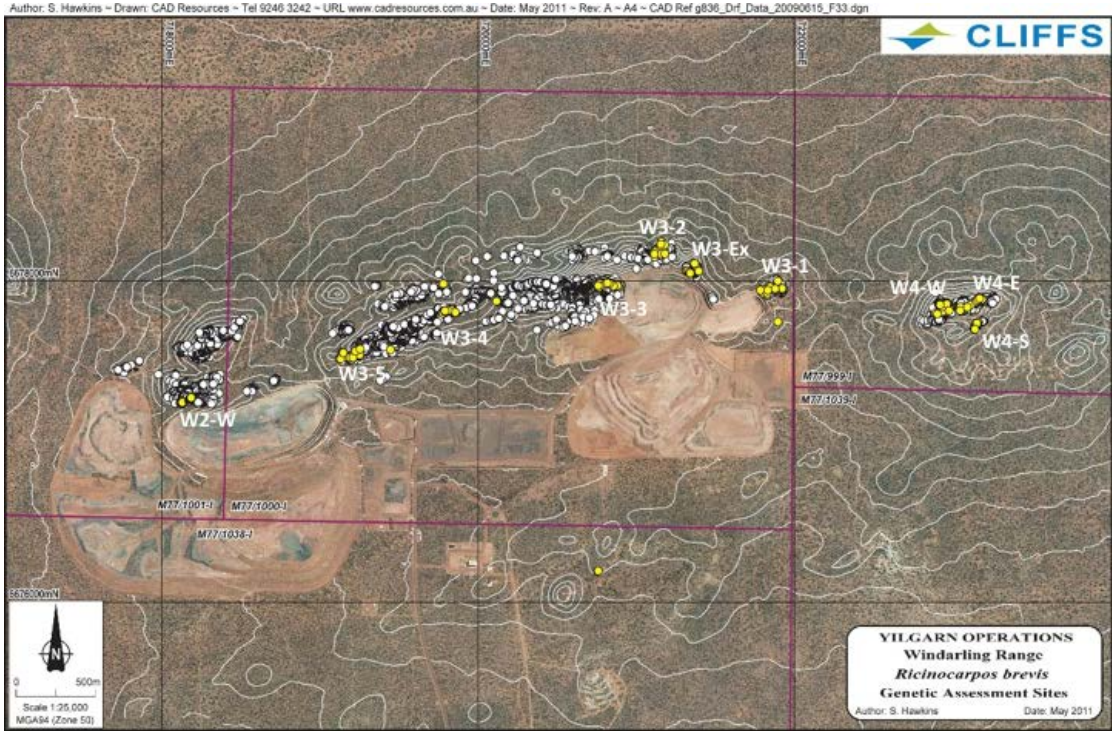


Fig S1b. *Ricinocarpos brevis* collection sites from Perrinvale Range. Each dot indicates the location of a plant (yellow indicates a sampled plant), and each cluster of yellow dots represents a population (PE (east) and PW (west)).

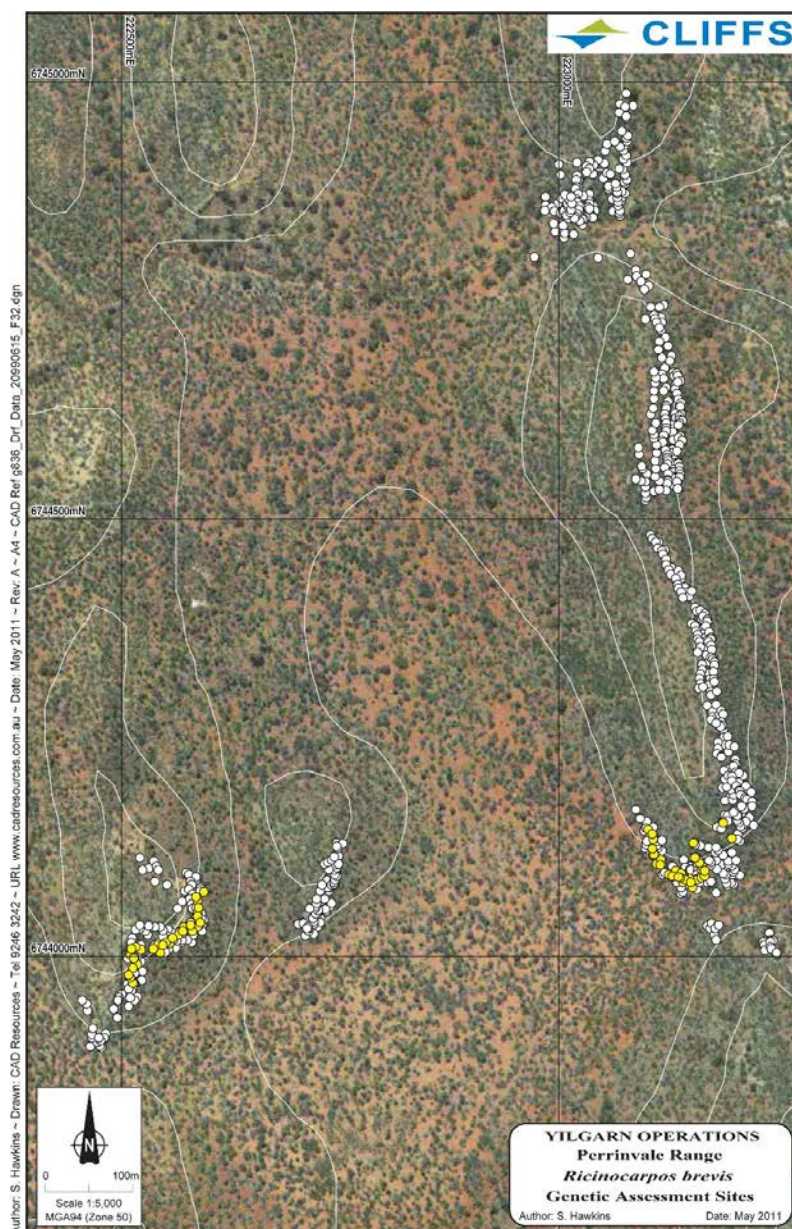


Fig S1c. *Ricinocarpos brevis* collection sites from Johnston Range. Each dot indicates the location of a plant (yellow indicates a sampled plant), and each cluster of yellow dots represents a population (JE (east) and JW (west)).

