

[10.1071/WR23129](https://doi.org/10.1071/WR23129)

Wildlife Research

Supplementary Material

The influence of severe wildfire on a threatened arboreal mammal

Mikayla C. Green^{A,B}, Damian R. Michael^B, James M. Turner^C, Lucy J. Wright^{A,B}, and Dale G. Nimmo^{A,B,}*

^ASchool of Agricultural, Environmental and Veterinary Sciences, Charles Sturt University, Albury, NSW, Australia.

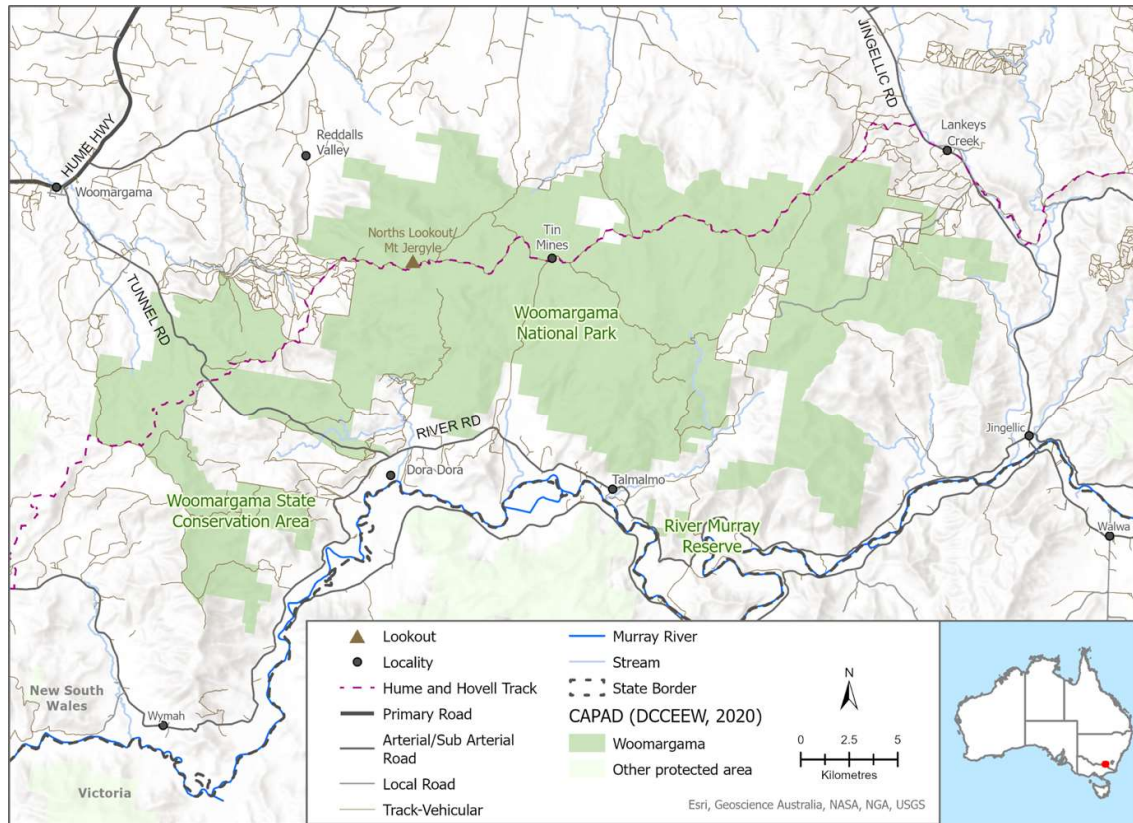
^BGulbali Institute, Charles Sturt University, Albury, NSW, Australia.

^CInstitute of Biomedical and Environmental Health Research, School of Health and Life Sciences, University of the West of Scotland, South Lanarkshire, UK.

*Correspondence to: Dale G. Nimmo School of Agricultural, Environmental and Veterinary Sciences, Charles Sturt University, Albury, NSW, Australia Email: mcg99@xtra.co.nz dznimmo@csu.edu.au

Supplementary material

Supplementary material 1 *Map of Woomargama National Park*



Supplementary material 2 *Double observer modelling results*

Total number of greater gliders recorded by Observer 1 (O1) and Observer 2 (O2) at each site, and the total number of distinct greater glider individuals recorded by the two observers during round 1 (R1) and round 2 (R2) of surveys.

Site	O1 R1	O2 R1	R1 Total	O1 R2	O2 R2	R2 Total
HS10	2	2	2	0	0	0
HS2	0	0	0	0	0	0
HS3	0	0	0	0	0	0
HS4	0	0	0	0	0	0
HS5	0	0	0	0	0	0
HS6	0	0	0	0	0	0
HS7	0	0	0	0	0	0
HS8	0	0	0	0	0	0
LM10	0	0	0	0	0	0

LM3	0	0	0	0	0	0
LM4	0	0	0	0	0	0
LM5	0	1	1	1	1	1
LM6	0	0	0	1	1	1
LM7	0	0	0	3	1	3
LM8	0	0	0	0	1	1
LM9	0	0	0	0	0	0
R10	0	0	0	0	0	0
R2	0	0	0	0	0	0
R20	0	0	1	2	3	3
R21	0	0	0	1	2	2
R22	0	0	0	0	0	0
R3	0	0	0	1	0	1
R4	1	1	1	2	3	3
R5	0	0	0	0	0	0
UB10	9	5	12	11	11	14
UB2	2	2	2	2	2	3
UB3	0	0	0	1	0	1
UB4	3	1	3	5	4	5
UB5	7	7	7	1	2	2
UB6	1	0	3	8	7	9
UB7	5	4	5	7	4	7
UB8	2	2	2	3	5	6
Average	1	0.78125	1.21875	1.53125	1.46875	1.9375
Total	32	25	39	49	47	62