

Supplementary Material

Changing large wildfire dynamics in the wildland–urban interface of the eastern United States

Noah C. Weidig^{A,}, Carissa L. Wonkka^A, Michaella A. Ivey^A and Victoria M. Donovan^A*

^ASchool of Forest, Fisheries, and Geomatics Sciences, West Florida Research and Education Center, Institute of Food and Agricultural Sciences, University of Florida, Milton, FL, USA

*Correspondence to: Email: noah.weidig@ufl.edu

Supplementary materials for “Changing large wildfire dynamics in the wildland-urban interface of the eastern United States”

Table S1. Housing density and WUI change

Changes in housing density classes across Level III ecoregions of the eastern United States from 1990 to 2020, including interface wildland-urban interface (WUI), intermix WUI, and varying vegetation and housing density combinations. Water was omitted due to negligible changes.

Ecoregion	Area (km ²)	Class	1990	2000	2010	2020	% Δ	rel. Δ
Acadian Plains and Hills	45,244	Interface WUI	1.5%	1.8%	1.9%	1.9%	0.4%	26.7%
		Intermix WUI	18.5%	22.0%	24.9%	24.9%	6.4%	34.6%
		Non-vegetated low & very low housing density	46.9%	45.2%	42.4%	40.6%	-6.3%	-13.4%
		Non-vegetated medium & high housing density	0.2%	0.2%	0.2%	0.2%	0.0%	0.0%
		Vegetated very low housing density	1.7%	1.7%	1.7%	1.7%	0.0%	0.0%
		Vegetated/no housing	25.6%	23.5%	23.4%	25.1%	-0.5%	-2.0%
Arkansas Valley	28,422	Interface WUI	3.0%	4.4%	5.0%	4.8%	1.7%	60.0%
		Intermix WUI	6.4%	7.8%	9.6%	9.5%	3.0%	48.4%
		Non-vegetated low & very low housing density	53.4%	50.8%	50.2%	50.5%	-2.9%	-5.4%
		Non-vegetated medium & high housing density	1.1%	1.4%	1.6%	1.6%	0.5%	45.5%
		Vegetated very low housing density	20.0%	20.2%	18.4%	18.5%	-1.4%	-7.5%
		Vegetated/no housing	12.4%	11.7%	11.4%	11.3%	-1.0%	-8.9%
Atlantic Coastal Pine Barrens	14,308	Interface WUI	9.7%	10.5%	11.4%	11.6%	1.9%	19.6%
		Intermix WUI	21.8%	21.9%	21.6%	21.7%	-0.2%	-0.5%
		Non-vegetated low & very low housing density	21.7%	19.7%	18.3%	17.3%	-4.4%	-20.3%
		Non-vegetated medium & high housing density	17.0%	18.5%	20.2%	20.7%	3.7%	21.8%
		Vegetated very low housing density	4.6%	3.7%	3.2%	3.5%	-1.0%	-23.9%
		Vegetated/no housing	22.3%	22.7%	22.3%	22.3%	0.0%	0.0%

Ecoregion	Area (km ²)	Class	1990	2000	2010	2020	% Δ	rel. Δ
Blue Ridge	46,595	Interface WUI	4.2%	5.2%	5.6%	5.7%	1.5%	35.7%
		Intermix WUI	26.2%	31.5%	36.6%	37.2%	11.0%	42.0%
		Non-vegetated low & very low housing density	36.2%	30.0%	25.5%	24.9%	-11.3%	-31.2%
		Non-vegetated medium & high housing density	0.4%	0.5%	0.6%	0.6%	0.2%	50.0%
		Vegetated very low housing density	2.2%	1.8%	1.2%	1.2%	-1.0%	-45.5%
		Vegetated/no housing	29.9%	30.1%	29.5%	29.5%	-0.3%	-1.3%
Boston Mountains	14,178	Interface WUI	1.8%	2.2%	2.4%	2.2%	0.4%	22.2%
		Intermix WUI	5.5%	7.9%	10.4%	9.9%	4.4%	80.0%
		Non-vegetated low & very low housing density	58.9%	56.9%	55.0%	55.3%	-3.6%	-6.1%
		Non-vegetated medium & high housing density	0.2%	0.3%	0.4%	0.4%	0.2%	100.0%
		Vegetated very low housing density	5.2%	4.8%	4.4%	4.5%	-0.8%	-13.5%
		Vegetated/no housing	27.4%	26.8%	26.4%	26.8%	-0.6%	-2.2%
Central Appalachians	62,050	Interface WUI	3.6%	3.9%	3.9%	3.9%	0.3%	8.3%
		Intermix WUI	24.4%	26.9%	27.7%	26.1%	1.7%	7.0%
		Non-vegetated low & very low housing density	51.3%	48.9%	47.6%	49.2%	-2.2%	-4.1%
		Non-vegetated medium & high housing density	0.1%	0.1%	0.1%	0.1%	0.0%	0.0%
		Vegetated very low housing density	2.8%	2.7%	2.6%	2.5%	-0.2%	-10.7%
		Vegetated/no housing	17.2%	17.0%	17.5%	17.6%	0.4%	2.3%
Central Corn Belt Plains	76,510	Interface WUI	0.7%	0.8%	0.9%	0.9%	0.1%	28.6%
		Intermix WUI	1.1%	1.2%	1.2%	1.2%	0.0%	9.1%
		Non-vegetated low & very low housing density	19.7%	20.3%	20.6%	21.0%	1.3%	6.6%
		Non-vegetated medium & high housing density	5.4%	6.1%	6.8%	7.0%	1.6%	29.6%
		Vegetated very low housing density	70.9%	69.3%	68.4%	67.7%	-3.2%	-4.5%
		Vegetated/no housing	1.5%	1.6%	1.6%	1.6%	0.1%	6.7%
Driftless Area	47,386	Interface WUI	1.0%	1.1%	1.3%	1.3%	0.4%	30.0%
		Intermix WUI	2.1%	2.6%	3.2%	3.4%	1.3%	61.9%

Ecoregion	Area (km ²)	Class	1990	2000	2010	2020	% Δ	rel. Δ
		Non-vegetated low & very low housing density	31.1%	30.8%	31.1%	31.0%	-0.2%	-0.3%
		Non-vegetated medium & high housing density	1.0%	1.1%	1.3%	1.4%	0.5%	40.0%
		Vegetated very low housing density	57.3%	56.8%	55.8%	55.6%	-1.7%	-3.0%
		Vegetated/no housing	5.4%	5.4%	5.2%	5.1%	-0.3%	-5.6%
East Central Texas Plains	55,753	Interface WUI	0.7%	1.2%	1.4%	1.5%	0.8%	114.3%
		Intermix WUI	3.6%	3.8%	4.9%	5.4%	1.8%	50.0%
		Non-vegetated low & very low housing density	50.1%	38.7%	40.7%	42.6%	-7.5%	-15.0%
		Non-vegetated medium & high housing density	0.9%	1.1%	1.2%	1.3%	0.4%	44.4%
		Vegetated very low housing density	37.2%	48.8%	45.9%	42.8%	5.6%	15.1%
		Vegetated/no housing	5.2%	4.2%	3.6%	4.1%	-1.1%	-21.2%
Eastern Corn Belt Plains	86,858	Interface WUI	1.3%	1.6%	1.8%	1.8%	0.5%	38.5%
		Intermix WUI	2.8%	3.3%	3.7%	3.7%	0.9%	32.1%
		Non-vegetated low & very low housing density	29.3%	31.8%	33.5%	33.5%	4.2%	14.3%
		Non-vegetated medium & high housing density	6.3%	7.3%	8.3%	8.7%	2.4%	38.1%
		Vegetated very low housing density	58.1%	53.6%	50.3%	50.0%	-8.1%	-13.9%
		Vegetated/no housing	1.5%	1.5%	1.5%	1.5%	0.0%	0.0%
Eastern Great Lakes Lowlands	40,301	Interface WUI	5.8%	6.4%	6.7%	6.9%	1.1%	19.0%
		Intermix WUI	18.0%	19.7%	21.3%	21.6%	3.7%	20.0%
		Non-vegetated low & very low housing density	39.9%	38.4%	37.9%	37.4%	-2.5%	-6.3%
		Non-vegetated medium & high housing density	6.5%	7.0%	7.6%	7.9%	1.4%	21.5%
		Vegetated very low housing density	18.6%	17.3%	15.6%	15.4%	-3.1%	-17.2%
		Vegetated/no housing	5.9%	5.6%	5.4%	5.3%	-0.5%	-10.2%
Erie Drift Plain	30,960	Interface WUI	5.4%	5.6%	6.0%	6.0%	0.6%	11.1%
		Intermix WUI	20.4%	22.8%	24.7%	24.5%	4.1%	20.1%
		Non-vegetated low & very low housing density	41.6%	41.7%	41.7%	42.0%	0.4%	1.0%
		Non-vegetated medium & high housing density	7.9%	8.9%	9.7%	9.9%	2.0%	25.3%

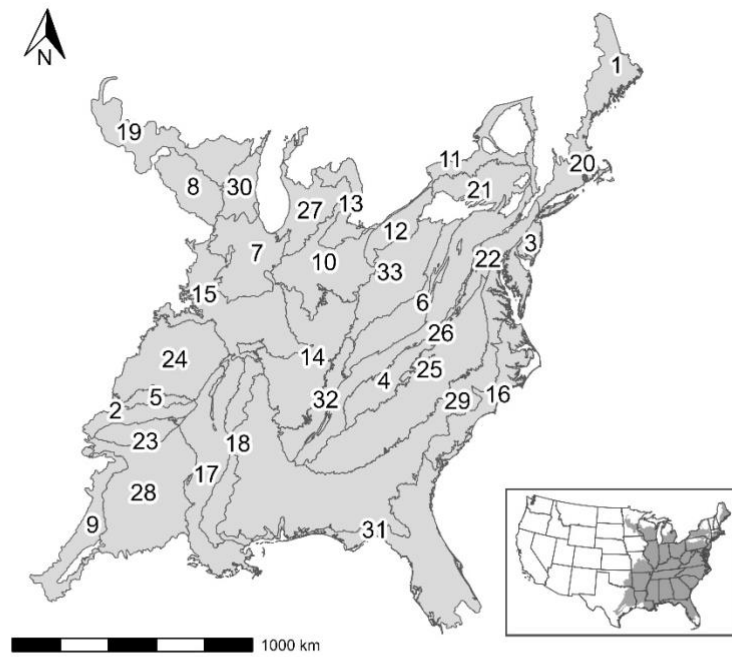
Ecoregion	Area (km ²)	Class	1990	2000	2010	2020	% Δ	rel. Δ
		Vegetated very low housing density	19.2%	15.3%	12.5%	12.1%	-7.0%	-37.0%
		Vegetated/no housing	4.1%	4.2%	4.0%	4.0%	-0.1%	-2.4%
Huron/Erie Lake Plains	31,595	Interface WUI	3.0%	3.1%	3.3%	3.2%	0.3%	6.7%
		Intermix WUI	6.3%	7.5%	7.8%	7.8%	1.5%	23.8%
		Non-vegetated low & very low housing density	28.6%	30.0%	31.6%	31.3%	2.6%	9.4%
		Non-vegetated medium & high housing density	9.0%	9.7%	10.4%	10.5%	1.5%	16.7%
		Vegetated very low housing density	49.5%	46.0%	43.2%	43.5%	-6.0%	-12.1%
		Vegetated/no housing	2.6%	2.8%	2.7%	2.7%	0.1%	3.8%
Interior Plateau	123,527	Interface WUI	4.0%	5.4%	5.8%	5.9%	1.9%	47.5%
		Intermix WUI	12.1%	14.9%	17.3%	17.6%	5.5%	45.5%
		Non-vegetated low & very low housing density	47.7%	44.7%	43.9%	43.8%	-3.9%	-8.2%
		Non-vegetated medium & high housing density	2.6%	3.5%	4.1%	4.5%	1.9%	73.1%
		Vegetated very low housing density	24.5%	22.6%	20.1%	19.5%	-4.9%	-20.4%
		Vegetated/no housing	6.8%	6.5%	6.4%	6.3%	-0.5%	-7.4%
Interior River Valleys and Hills	120,448	Interface WUI	1.3%	1.5%	1.6%	1.6%	0.3%	23.1%
		Intermix WUI	4.2%	4.8%	5.5%	5.5%	1.3%	31.0%
		Non-vegetated low & very low housing density	31.6%	31.1%	31.5%	32.0%	0.4%	1.3%
		Non-vegetated medium & high housing density	2.6%	2.9%	3.1%	3.2%	0.6%	23.1%
		Vegetated very low housing density	53.5%	52.8%	51.5%	50.8%	-2.7%	-5.0%
		Vegetated/no housing	4.4%	4.5%	4.3%	4.5%	0.0%	2.3%
Middle Atlantic Coastal Plain	78,476	Interface WUI	4.6%	5.4%	6.0%	6.0%	1.4%	30.4%
		Intermix WUI	14.1%	17.0%	18.7%	18.5%	4.4%	31.2%
		Non-vegetated low & very low housing density	44.6%	42.2%	41.1%	40.9%	-3.7%	-8.3%
		Non-vegetated medium & high housing density	2.7%	3.3%	3.8%	4.1%	1.3%	51.9%
		Vegetated very low housing density	11.0%	9.7%	8.7%	8.7%	-2.3%	-20.9%
		Vegetated/no housing	20.0%	19.4%	18.8%	18.9%	-1.1%	-5.5%

Ecoregion	Area (km ²)	Class	1990	2000	2010	2020	% Δ	rel. Δ
Mississippi Alluvial Plain	116,119	Interface WUI	1.6%	1.8%	1.8%	1.8%	0.2%	12.5%
		Intermix WUI	1.5%	1.6%	1.6%	1.5%	0.1%	0.0%
		Non-vegetated low & very low housing density	28.1%	29.6%	30.1%	31.5%	3.5%	12.1%
		Non-vegetated medium & high housing density	1.1%	1.2%	1.3%	1.3%	0.2%	18.2%
		Vegetated very low housing density	44.4%	42.8%	40.7%	38.9%	-5.5%	-12.4%
		Vegetated/no housing	15.2%	14.9%	16.4%	16.8%	1.7%	10.5%
Mississippi Valley Loess Plains	51,810	Interface WUI	2.8%	3.7%	3.7%	3.8%	1.0%	35.7%
		Intermix WUI	10.8%	12.0%	14.0%	14.8%	3.9%	37.0%
		Non-vegetated low & very low housing density	50.4%	49.2%	49.4%	48.4%	-2.0%	-4.0%
		Non-vegetated medium & high housing density	2.9%	3.6%	4.1%	4.4%	1.5%	51.7%
		Vegetated very low housing density	24.9%	23.8%	20.9%	20.7%	-4.2%	-16.9%
		Vegetated/no housing	7.3%	6.9%	7.1%	7.1%	-0.2%	-2.7%
North Central Hardwood Forests	88,910	Interface WUI	2.1%	2.4%	2.8%	2.9%	0.8%	38.1%
		Intermix WUI	6.4%	7.7%	9.1%	9.3%	2.9%	45.3%
		Non-vegetated low & very low housing density	33.3%	33.6%	33.6%	33.5%	0.2%	0.6%
		Non-vegetated medium & high housing density	2.6%	3.1%	3.6%	3.8%	1.3%	46.2%
		Vegetated very low housing density	43.2%	40.5%	38.5%	38.0%	-5.2%	-12.0%
		Vegetated/no housing	7.8%	8.0%	7.6%	7.8%	0.0%	0.0%
Northeastern Coastal Zone	42,067	Interface WUI	10.8%	10.6%	11.8%	12.1%	1.3%	12.0%
		Intermix WUI	47.0%	49.7%	49.9%	50.1%	3.0%	6.6%
		Non-vegetated low & very low housing density	14.8%	12.4%	10.6%	9.8%	-4.9%	-33.8%
		Non-vegetated medium & high housing density	12.1%	12.5%	13.4%	13.7%	1.6%	13.2%
		Vegetated very low housing density	1.9%	1.6%	1.5%	1.4%	-0.5%	-26.3%
		Vegetated/no housing	9.6%	9.6%	9.2%	9.2%	-0.4%	-4.2%
Northern Allegheny Plateau	46,510	Interface WUI	6.6%	7.3%	7.7%	7.6%	0.9%	15.2%
		Intermix WUI	22.5%	26.4%	30.1%	28.8%	6.3%	28.0%

Ecoregion	Area (km ²)	Class	1990	2000	2010	2020	% Δ	rel. Δ
		Non-vegetated low & very low housing density	49.2%	45.7%	43.2%	44.3%	-5.0%	-10.0%
		Non-vegetated medium & high housing density	0.5%	0.6%	0.6%	0.6%	0.1%	20.0%
		Vegetated very low housing density	12.4%	11.7%	10.4%	10.4%	-1.9%	-16.1%
		Vegetated/no housing	7.3%	6.9%	6.6%	6.8%	-0.5%	-6.8%
Northern Piedmont	31,365	Interface WUI	10.5%	9.9%	10.6%	10.7%	0.2%	1.9%
		Intermix WUI	14.4%	18.2%	18.8%	18.7%	4.3%	29.9%
		Non-vegetated low & very low housing density	38.3%	35.4%	34.1%	33.3%	-5.0%	-13.1%
		Non-vegetated medium & high housing density	17.0%	19.2%	21.3%	22.5%	5.5%	32.4%
		Vegetated very low housing density	13.8%	11.0%	9.2%	8.8%	-5.0%	-36.2%
		Vegetated/no housing	4.2%	4.4%	4.3%	4.1%	-0.1%	-2.4%
Ouachita Mountains	26,895	Interface WUI	1.7%	2.5%	2.7%	2.7%	1.0%	58.8%
		Intermix WUI	6.6%	8.0%	9.0%	9.0%	2.4%	36.4%
		Non-vegetated low & very low housing density	41.6%	40.9%	39.8%	39.0%	-2.6%	-6.3%
		Non-vegetated medium & high housing density	0.4%	0.5%	0.6%	0.6%	0.2%	50.0%
		Vegetated very low housing density	3.8%	3.8%	3.8%	3.8%	-0.1%	0.0%
		Vegetated/no housing	43.6%	42.0%	41.9%	42.7%	-0.9%	-2.1%
Ozark Highlands	106,391	Interface WUI	1.9%	2.7%	3.0%	3.0%	1.1%	57.9%
		Intermix WUI	8.0%	10.0%	11.9%	11.5%	3.6%	43.8%
		Non-vegetated low & very low housing density	53.7%	49.6%	49.0%	49.1%	-4.6%	-8.6%
		Non-vegetated medium & high housing density	0.9%	1.2%	1.4%	1.5%	0.6%	66.7%
		Vegetated very low housing density	21.3%	22.8%	21.3%	21.1%	-0.2%	-0.9%
		Vegetated/no housing	12.7%	12.0%	11.8%	12.3%	-0.4%	-3.1%
Piedmont	166,117	Interface WUI	4.4%	6.0%	6.5%	6.7%	2.2%	52.3%
		Intermix WUI	29.3%	33.3%	36.9%	36.9%	7.5%	25.9%
		Non-vegetated low & very low housing density	46.2%	40.6%	37.0%	36.7%	-9.6%	-20.6%
		Non-vegetated medium & high housing density	3.8%	5.1%	6.1%	6.5%	2.7%	71.1%

Ecoregion	Area (km ²)	Class	1990	2000	2010	2020	% Δ	rel. Δ
		Vegetated very low housing density	3.9%	3.6%	2.9%	2.9%	-1.1%	-25.6%
		Vegetated/no housing	10.0%	9.0%	8.3%	8.1%	-1.8%	-19.0%
Ridge and Valley	116,716	Interface WUI	9.8%	11.5%	12.2%	12.2%	2.4%	24.5%
		Intermix WUI	19.5%	21.9%	24.2%	24.0%	4.4%	23.1%
		Non-vegetated low & very low housing density	41.8%	39.0%	36.8%	36.7%	-5.2%	-12.2%
		Non-vegetated medium & high housing density	3.0%	3.7%	4.3%	4.5%	1.5%	50.0%
		Vegetated very low housing density	9.8%	8.2%	7.0%	6.9%	-2.9%	-29.6%
		Vegetated/no housing	14.3%	13.9%	13.7%	14.0%	-0.3%	-2.1%
South Central Plains	152,132	Interface WUI	2.1%	3.2%	3.2%	3.3%	1.2%	57.1%
		Intermix WUI	11.1%	12.0%	13.5%	13.6%	2.6%	22.5%
		Non-vegetated low & very low housing density	57.9%	55.7%	55.0%	54.5%	-3.4%	-5.9%
		Non-vegetated medium & high housing density	0.7%	0.8%	1.0%	1.1%	0.4%	57.1%
		Vegetated very low housing density	7.7%	8.8%	7.9%	7.8%	0.1%	1.3%
		Vegetated/no housing	17.8%	16.7%	16.6%	16.9%	-0.8%	-5.1%
Southeastern Plains	328,885	Interface WUI	3.1%	4.5%	4.7%	4.7%	1.6%	51.6%
		Intermix WUI	13.4%	16.1%	18.3%	18.2%	4.9%	35.8%
		Non-vegetated low & very low housing density	57.1%	53.0%	51.8%	51.8%	-5.2%	-9.3%
		Non-vegetated medium & high housing density	1.1%	1.4%	1.6%	1.7%	0.6%	54.5%
		Vegetated very low housing density	10.5%	10.8%	9.6%	9.6%	-0.9%	-8.6%
		Vegetated/no housing	13.4%	12.7%	12.4%	12.4%	-1.0%	-7.5%
Southeastern Wisconsin Till Plains	31,350	Interface WUI	2.7%	3.1%	3.5%	3.7%	0.9%	37.0%
		Intermix WUI	2.8%	3.6%	3.8%	3.8%	1.0%	35.7%
		Non-vegetated low & very low housing density	27.1%	29.6%	30.5%	30.8%	3.7%	13.7%
		Non-vegetated medium & high housing density	7.6%	9.1%	10.6%	11.2%	3.6%	47.4%
		Vegetated very low housing density	51.5%	45.7%	42.8%	41.7%	-9.7%	-19.0%
		Vegetated/no housing	3.6%	4.2%	4.1%	4.2%	0.6%	16.7%

Ecoregion	Area (km ²)	Class	1990	2000	2010	2020	% Δ	rel. Δ
Southern Coastal Plain	141,414	Interface WUI	3.4%	4.8%	5.5%	5.8%	2.4%	70.6%
		Intermix WUI	10.6%	11.2%	12.8%	13.2%	2.6%	24.5%
		Non-vegetated low & very low housing density	34.0%	31.2%	29.9%	28.8%	-5.3%	-15.3%
		Non-vegetated medium & high housing density	4.2%	5.2%	6.2%	6.6%	2.4%	57.1%
		Vegetated very low housing density	8.4%	9.3%	8.6%	8.6%	0.2%	2.4%
		Vegetated/no housing	34.4%	33.3%	32.0%	31.9%	-2.4%	-7.3%
Southern Michigan/Northern Indiana Drift Plains	53,035	Interface WUI	5.3%	5.4%	5.8%	5.8%	0.5%	9.4%
		Intermix WUI	11.4%	14.6%	15.4%	15.5%	4.1%	36.0%
		Non-vegetated low & very low housing density	32.8%	33.8%	34.8%	34.5%	1.7%	5.2%
		Non-vegetated medium & high housing density	6.4%	7.3%	8.2%	8.5%	2.2%	32.8%
		Vegetated very low housing density	38.3%	32.9%	29.8%	29.7%	-8.6%	-22.5%
		Vegetated/no housing	3.6%	3.6%	3.6%	3.6%	0.1%	0.0%
Southwestern Appalachians	37,995	Interface WUI	4.3%	6.0%	6.1%	6.1%	1.9%	41.9%
		Intermix WUI	18.5%	21.8%	24.4%	24.9%	6.4%	34.6%
		Non-vegetated low & very low housing density	53.8%	49.9%	48.2%	48.0%	-5.8%	-10.8%
		Non-vegetated medium & high housing density	0.7%	0.9%	1.1%	1.1%	0.5%	57.1%
		Vegetated very low housing density	4.4%	4.3%	3.6%	3.6%	-0.8%	-18.2%
		Vegetated/no housing	16.8%	15.5%	14.9%	14.7%	-2.2%	-12.5%
Western Allegheny Plateau	81,440	Interface WUI	6.8%	7.4%	7.8%	7.7%	0.9%	13.2%
		Intermix WUI	24.5%	28.2%	30.9%	29.6%	5.1%	20.8%
		Non-vegetated low & very low housing density	51.8%	47.9%	45.4%	46.6%	-5.2%	-10.0%
		Non-vegetated medium & high housing density	1.6%	1.7%	1.9%	2.0%	0.4%	25.0%
		Vegetated very low housing density	6.3%	6.0%	5.5%	5.4%	-0.9%	-14.3%
		Vegetated/no housing	8.0%	7.6%	7.5%	7.7%	-0.3%	-3.7%



- | | |
|-------------------------------------|---------------------------------------|
| 1 Acadian Plains and Hills | 18 Mississippi Valley Loess Plains |
| 2 Arkansas Valley | 19 North Central Hardwood Forests |
| 3 Atlantic Coastal Pine Barrens | 20 Northeastern Coastal Zone |
| 4 Blue Ridge | 21 Northern Allegheny Plateau |
| 5 Boston Mountains | 22 Northern Piedmont |
| 6 Central Appalachians | 23 Ouachita Mountains |
| 7 Central Corn Belt Plains | 24 Ozark Highlands |
| 8 Driftless Area | 25 Piedmont |
| 9 East Central Texas Plains | 26 Ridge and Valley |
| 10 Eastern Corn Belt Plains | 27 S Michigan/N Indiana Drift Plains |
| 11 Eastern Great Lakes Lowlands | 28 South Central Plains |
| 12 Erie Drift Plain | 29 Southeastern Plains |
| 13 Huron/Erie Lake Plains | 30 Southeastern Wisconsin Till Plains |
| 14 Interior Plateau | 31 Southern Coastal Plain |
| 15 Interior River Valleys and Hills | 32 Southwestern Appalachians |
| 16 Middle Atlantic Coastal Plain | 33 Western Allegheny Plateau |
| 17 Mississippi Alluvial Plain | |

Fig. S1. Level III ecoregions of the Eastern Temperate Forests ecoregion, as designated by the United States Environmental Protection Agency. The inset map shows the location of the Eastern Temperate Forests ecoregion in relation to the United States of America.

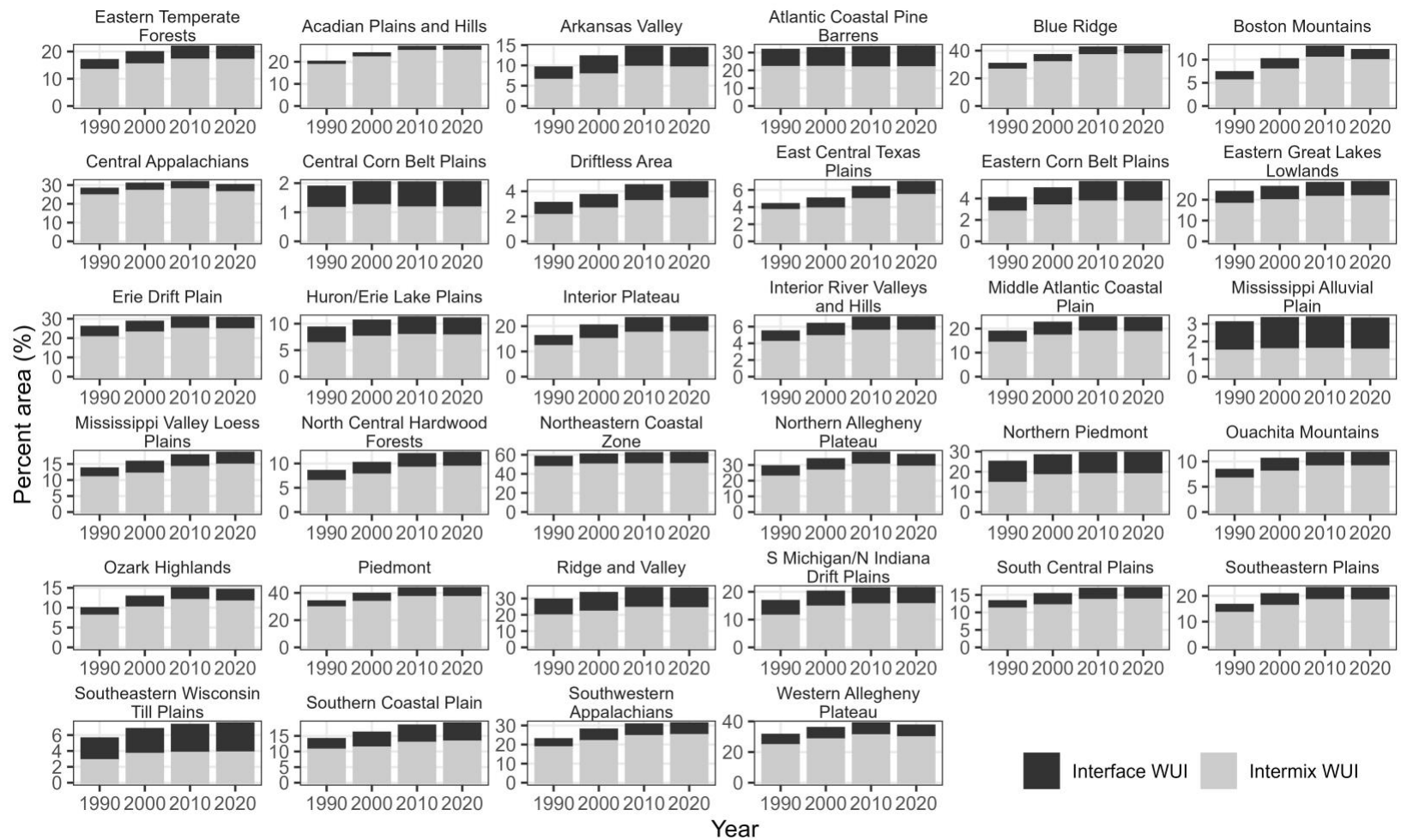


Fig. S2. Decadal percent change in intermix (light grey) and interface (dark grey) wildland-urban interface (WUI) from 1990 to 2020 across Level III ecoregions of the eastern United States.

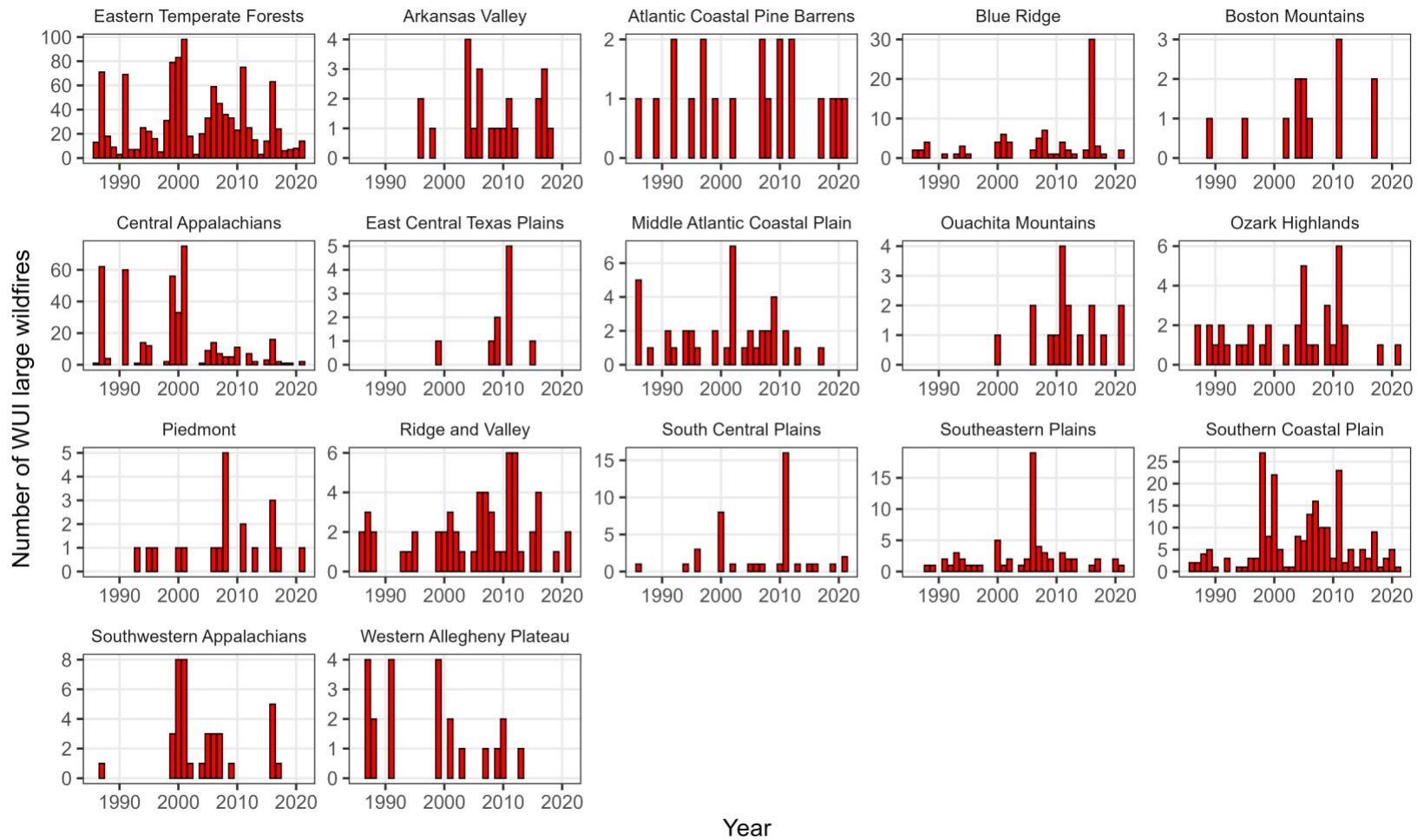


Fig. S3. Change in the number of large (>200 ha) wildfires inside the wildland-urban interface (WUI) from 1986 to 2021 across Level III ecoregions of the eastern United States.

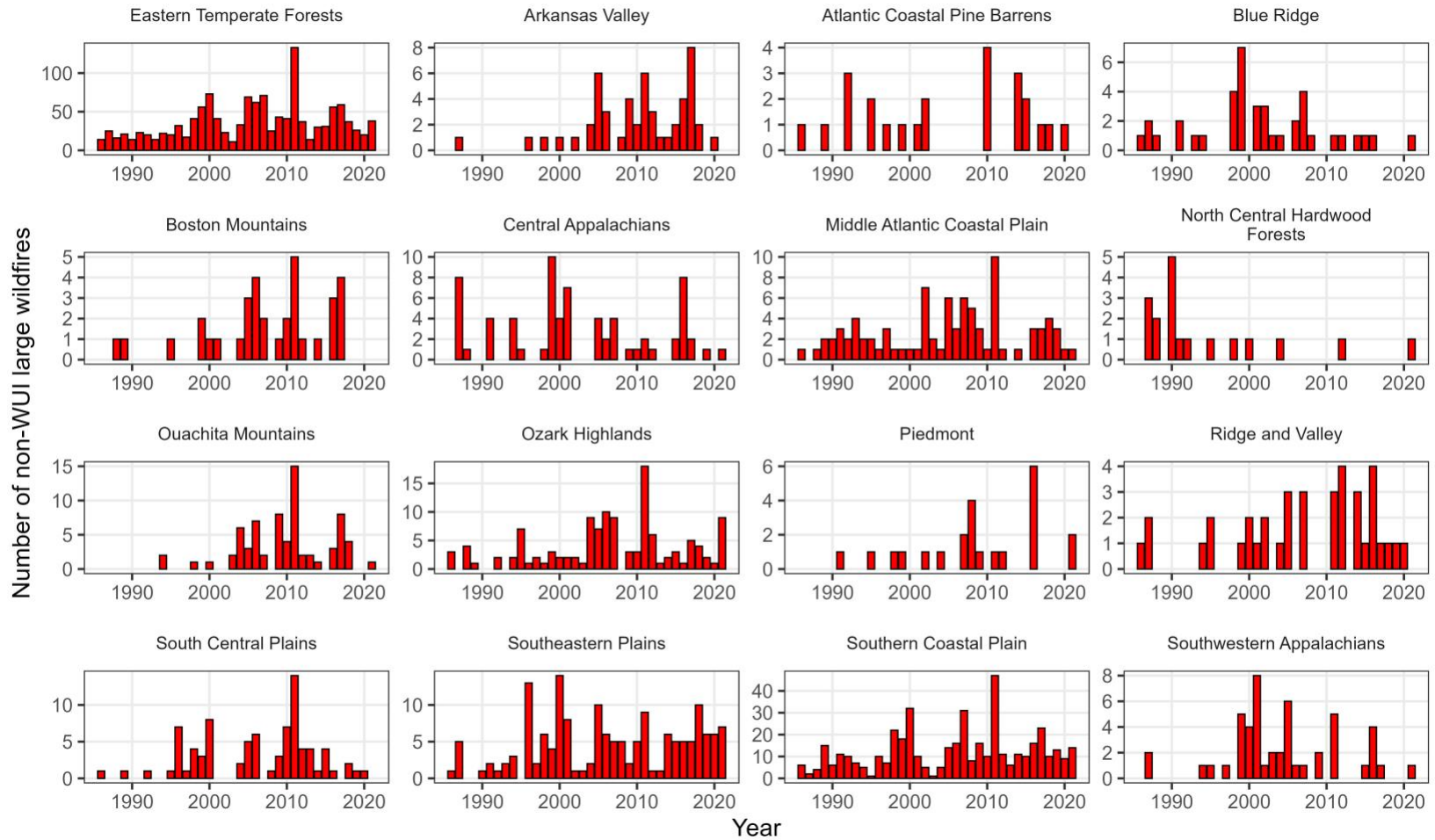


Fig. S4. Change in the number of large (>200 ha) wildfires outside the wildland-urban interface (WUI) from 1986 to 2021 across Level III ecoregions of the eastern United States.

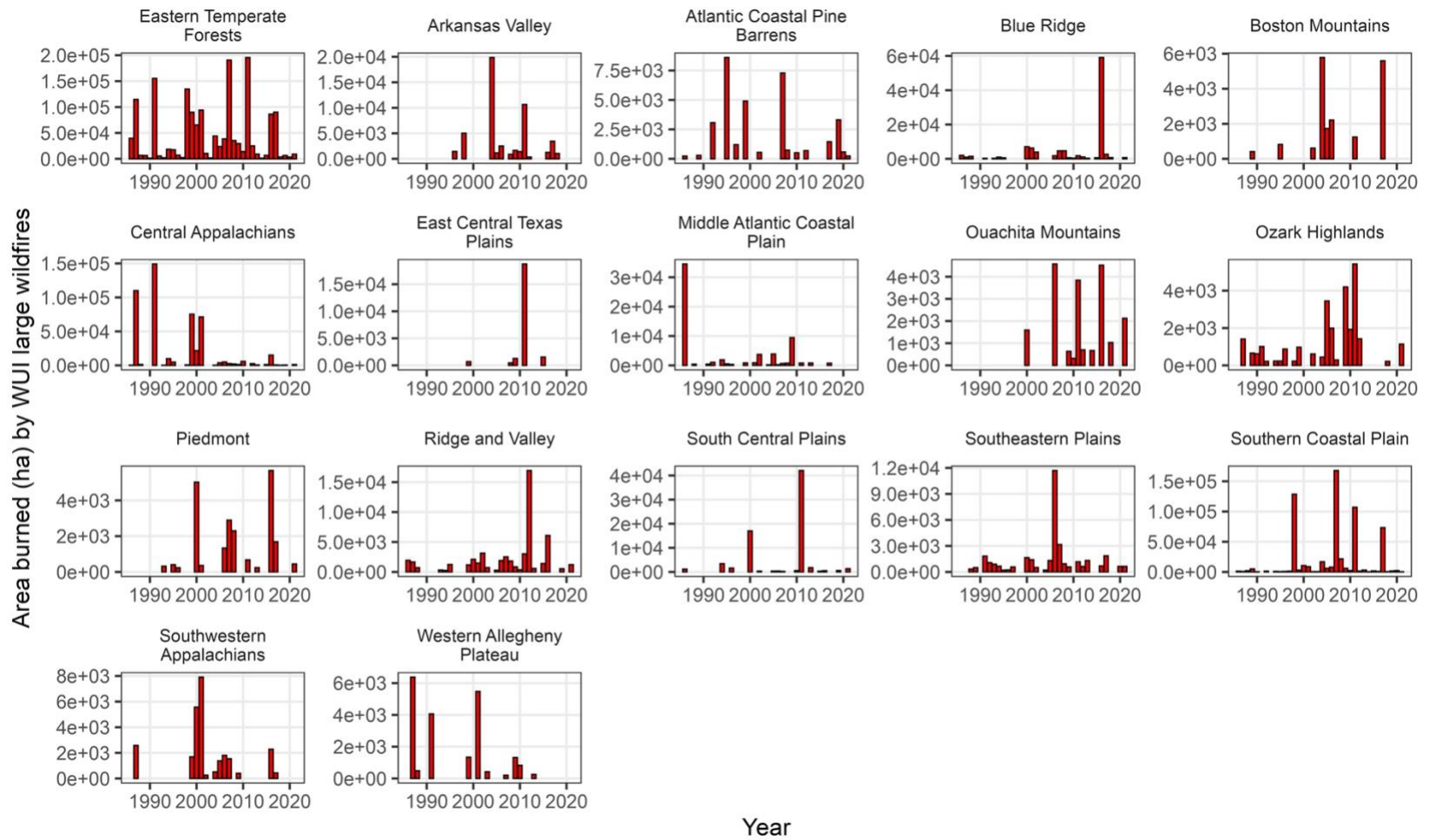


Fig. S5. Change in the total area burned (hectares) by large (>200 ha) wildfires inside the wildland-urban interface (WUI) from 1986 to 2021 across Level III ecoregions of the eastern United States.

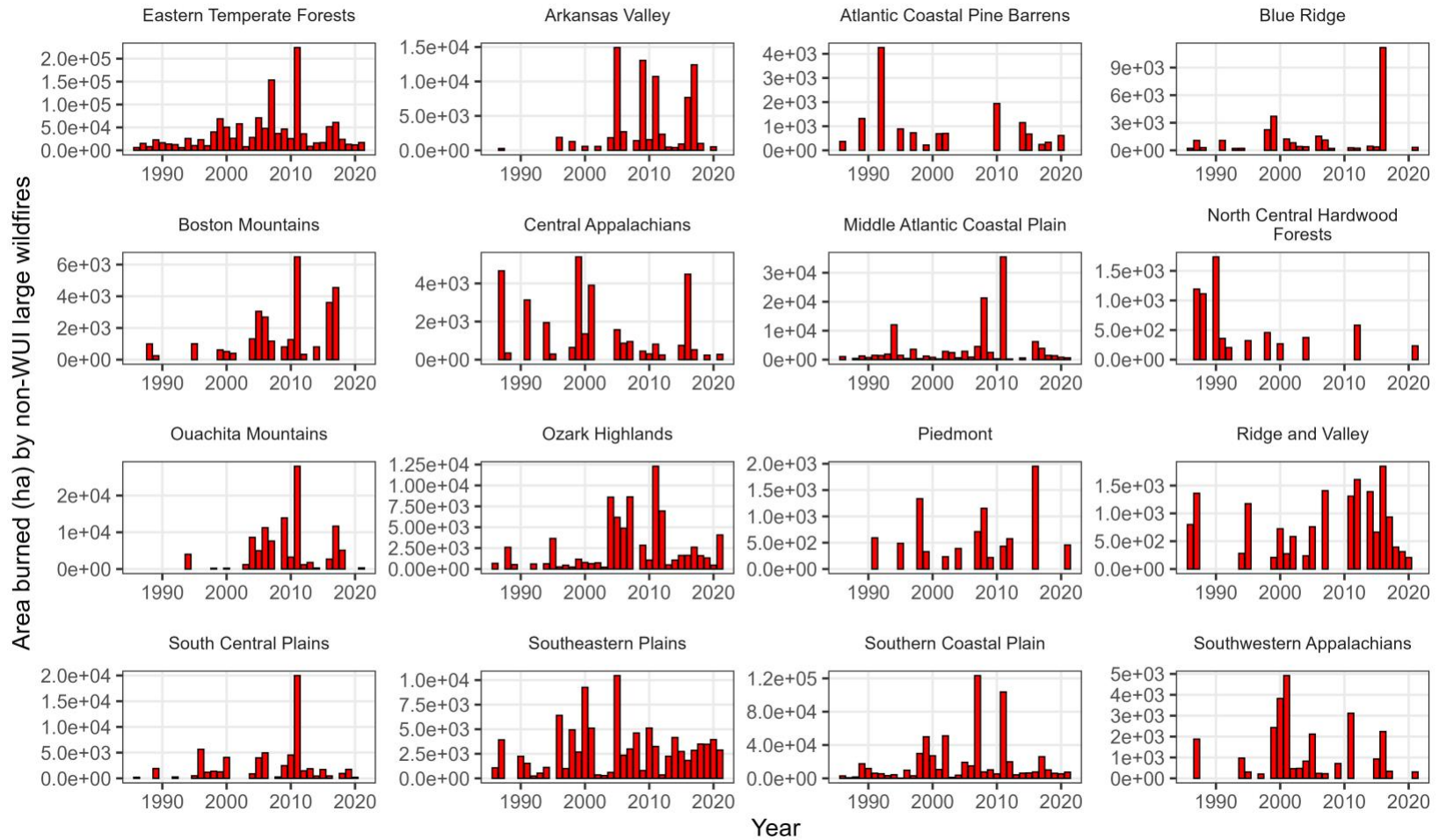


Fig. S6. Change in the total area burned (hectares) by large (>200 ha) wildfires in the wildland-urban interface (WUI) from 1986 to 2021 across Level III ecoregions of the eastern United States.

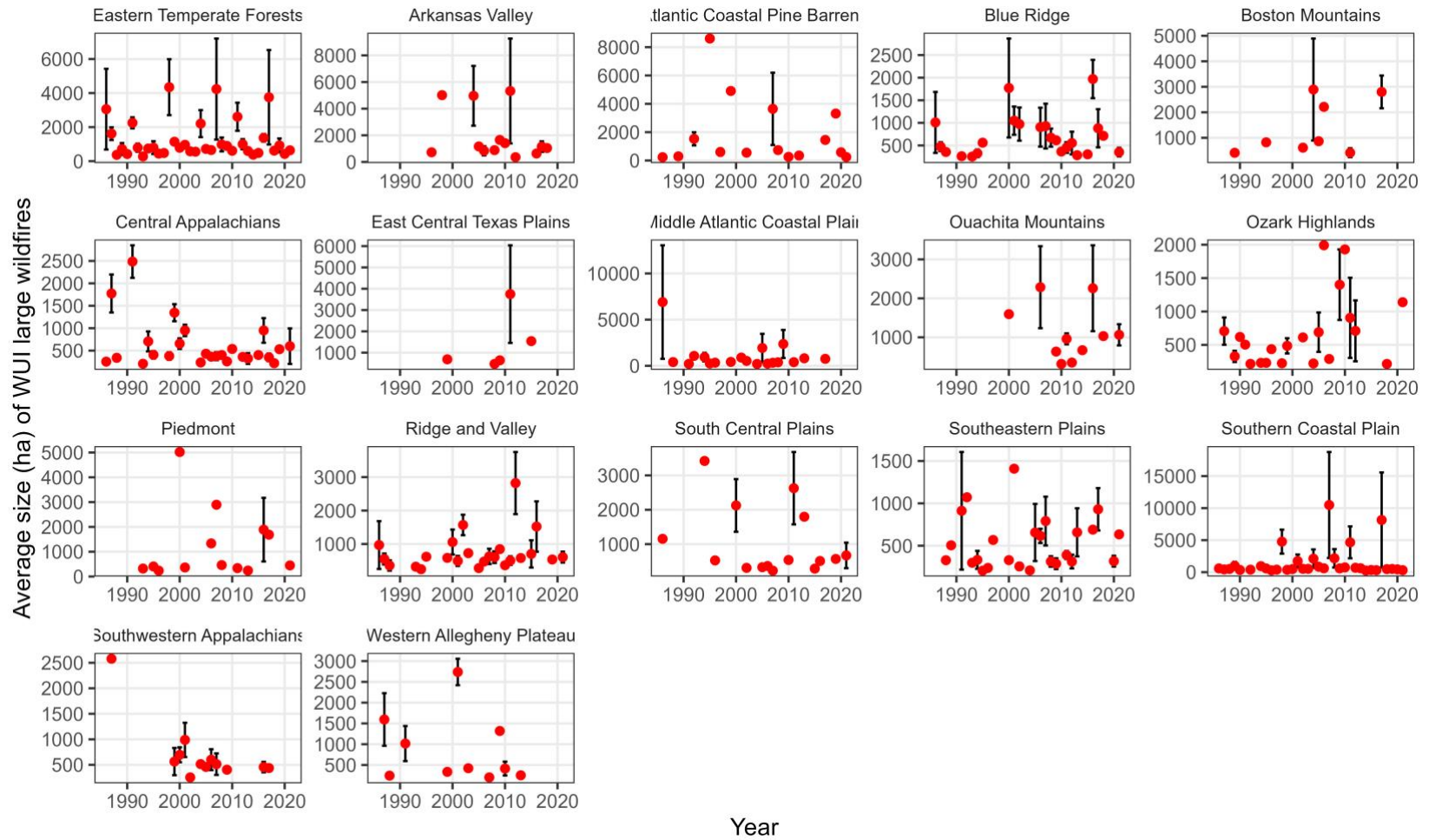


Fig. S7. Change in the average size (hectares) (\pm standard error) of large (>200 ha) wildfires inside the wildland-urban interface (WUI) from 1986 to 2021 across Level III ecoregions of the eastern United States.

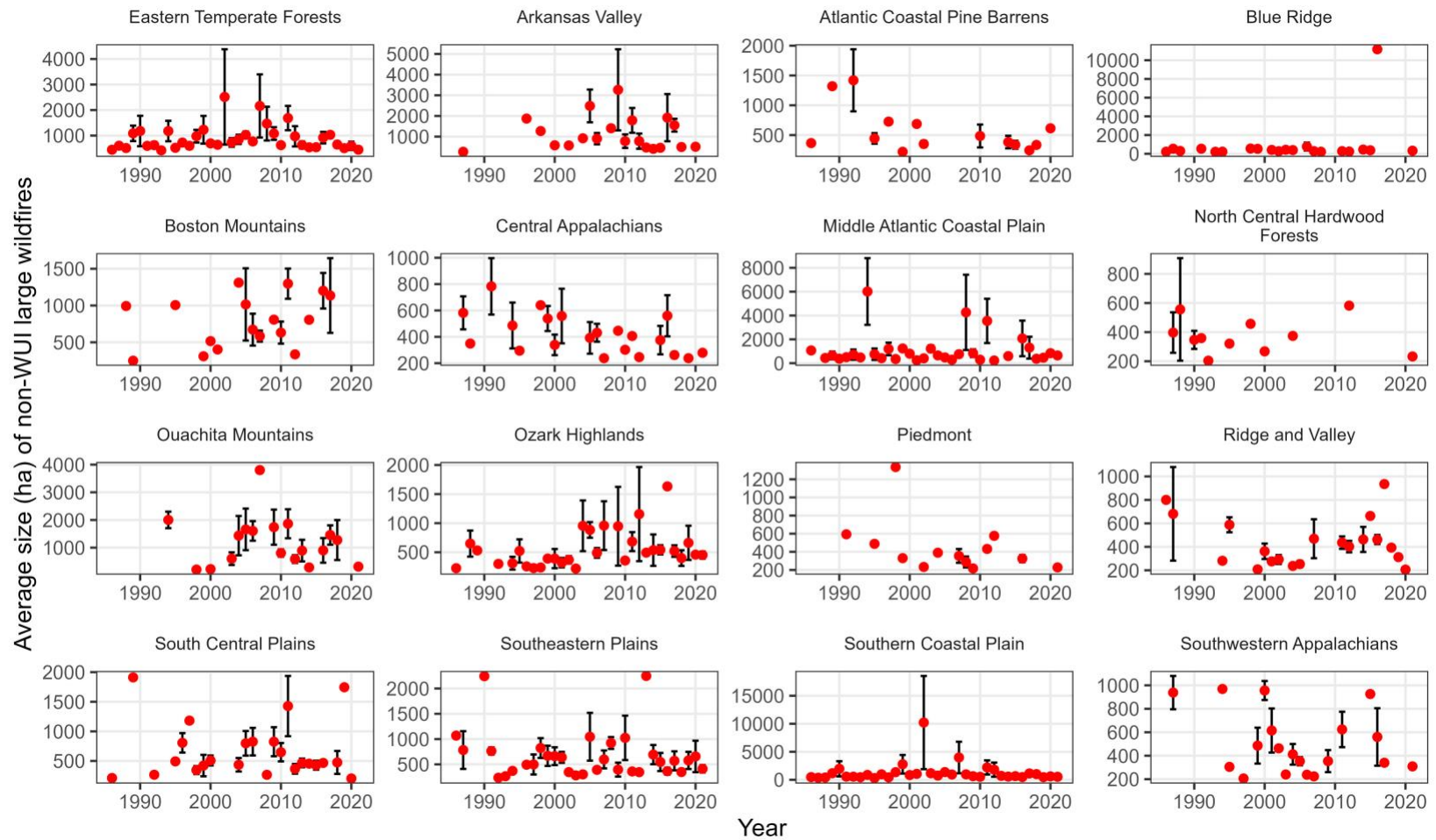


Fig. S8. Change in the average size (hectares) (\pm standard error) of large (>200 ha) wildfires outside the wildland-urban interface (WUI) from 1986 to 2021 across Level III ecoregions of the eastern United States.

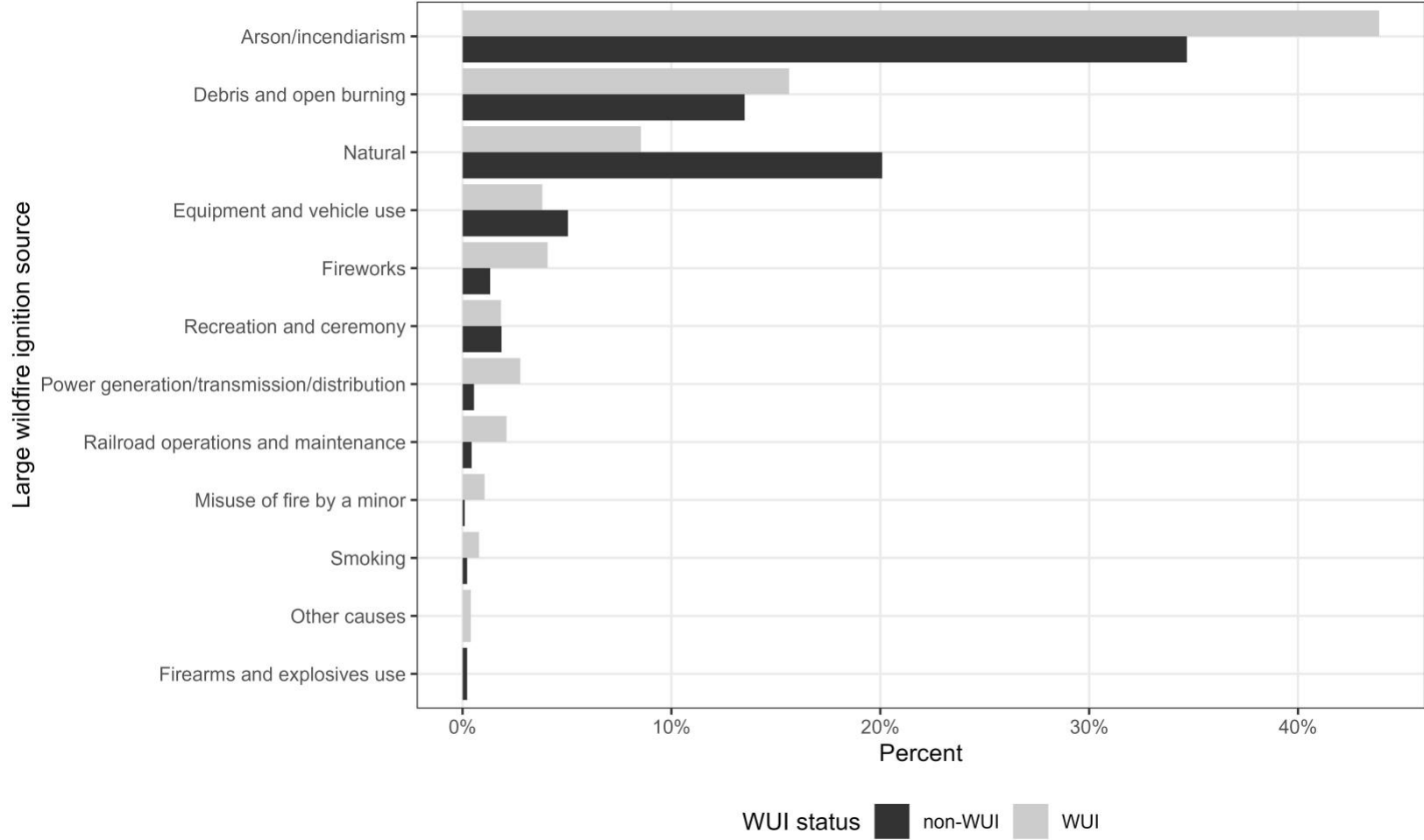


Fig. S9. Ignition sources for large (>200 hectares) wildfires inside and outside the wildland-urban interface (WUI) from 1986 to 2021 in the eastern United States (n = 1,749).

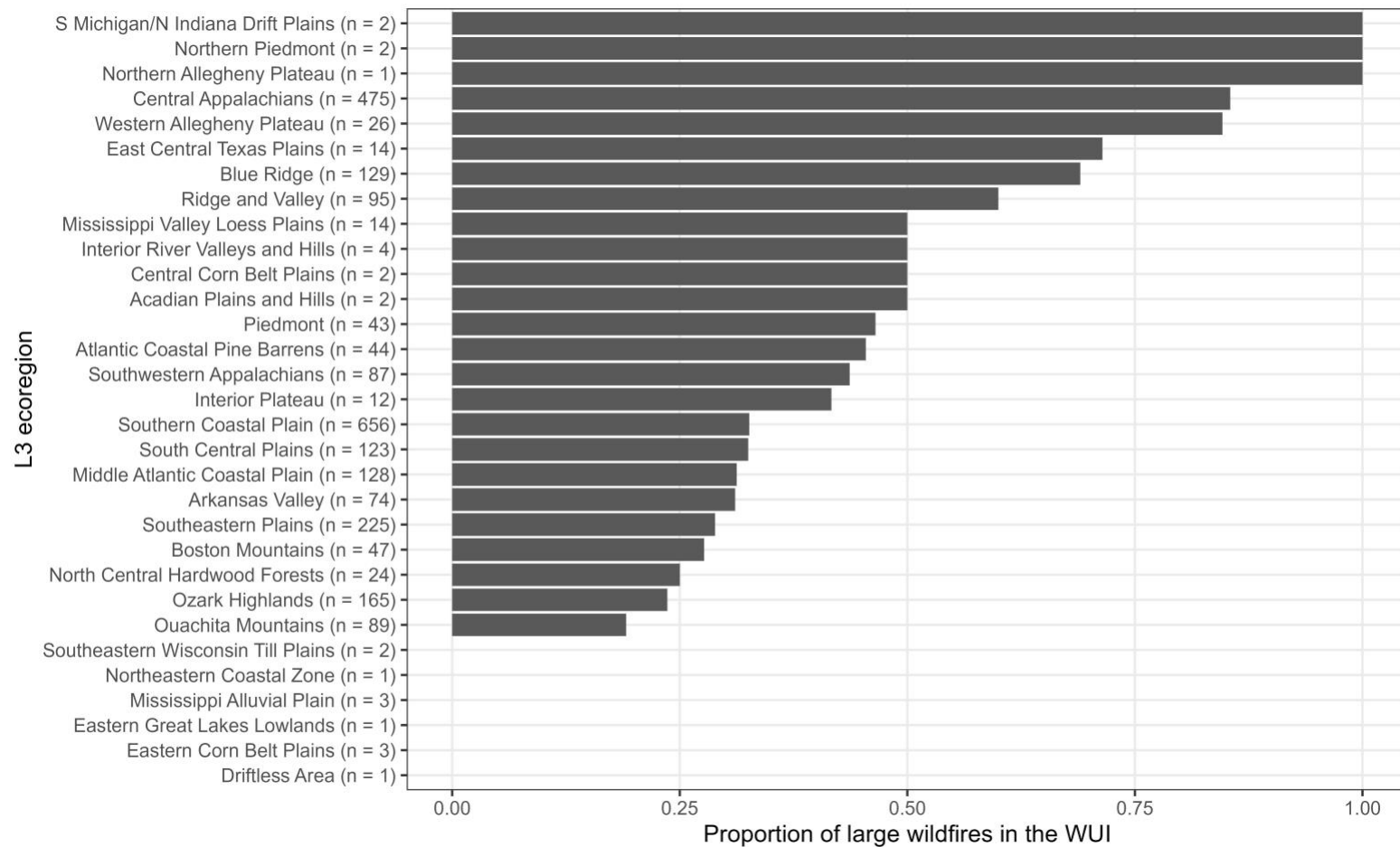


Fig. S10. The proportion of large (>200 hectares) wildfires inside the wildland-urban interface (WUI) across Level III (L3) ecoregions of the eastern United States between 1986 and 2021. The total number of large wildfires both inside and outside the WUI in each ecoregion is shown on the y-axis.