

[10.1071/SH24237](https://doi.org/10.1071/SH24237)

Sexual Health

Supplementary Material

Assessing and projecting the global impacts of female infertility: a 1990–2040 analysis from the Global Burden of Disease study

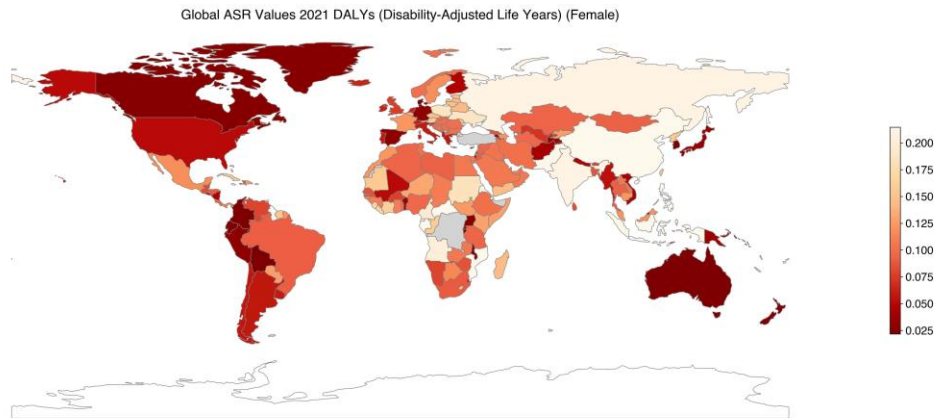
Hanjin Wang^A, and Bengui Jiang^{A,}*

^AFour Gynecological Wards, Women and Children's Hospital of Ningbo University, Ningbo315000, Zhejiang, China.

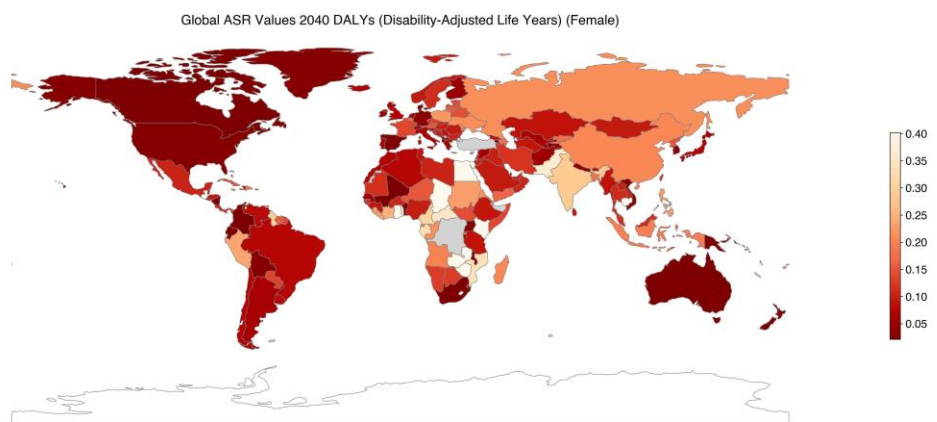
*Correspondence to: Bengui Jiang Four Gynecological Wards, Women and Children's Hospital of Ningbo University, Ningbo 315000, Zhejiang, China Email: jiangbengui@126.com

Supplementary Figure S1: Projected global burden of age-standardized DALY rate of Female Infertility in 2040, by countries. (A) in 2021 (B) in 2040. DALY = disability adjusted life-year.

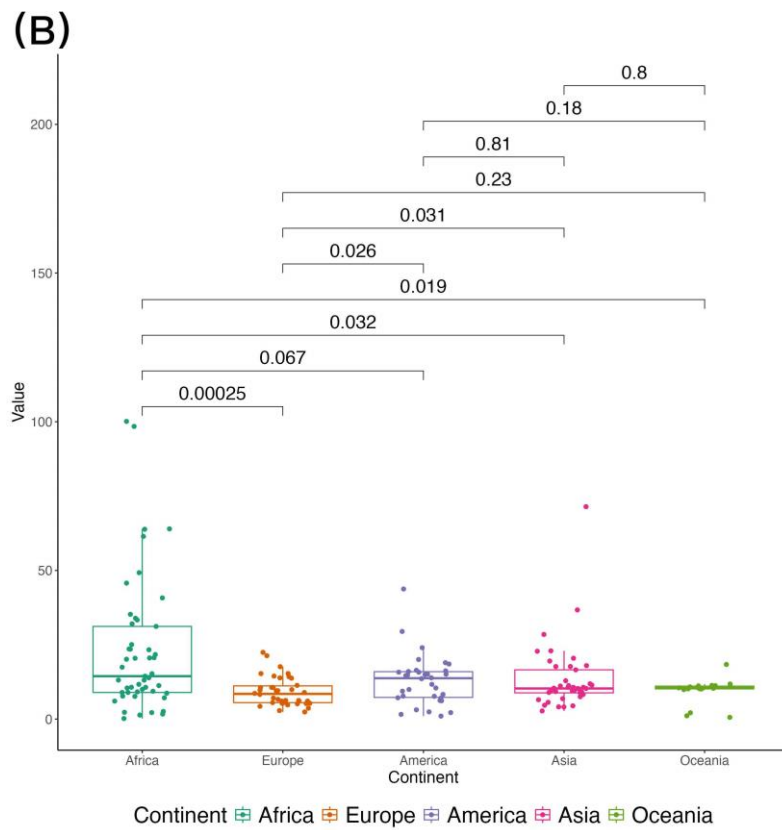
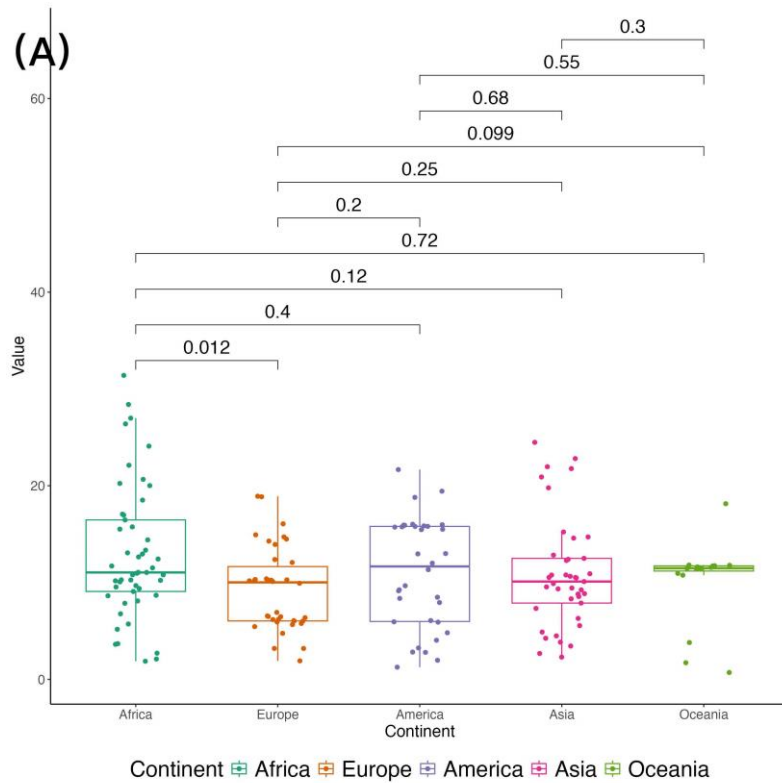
A



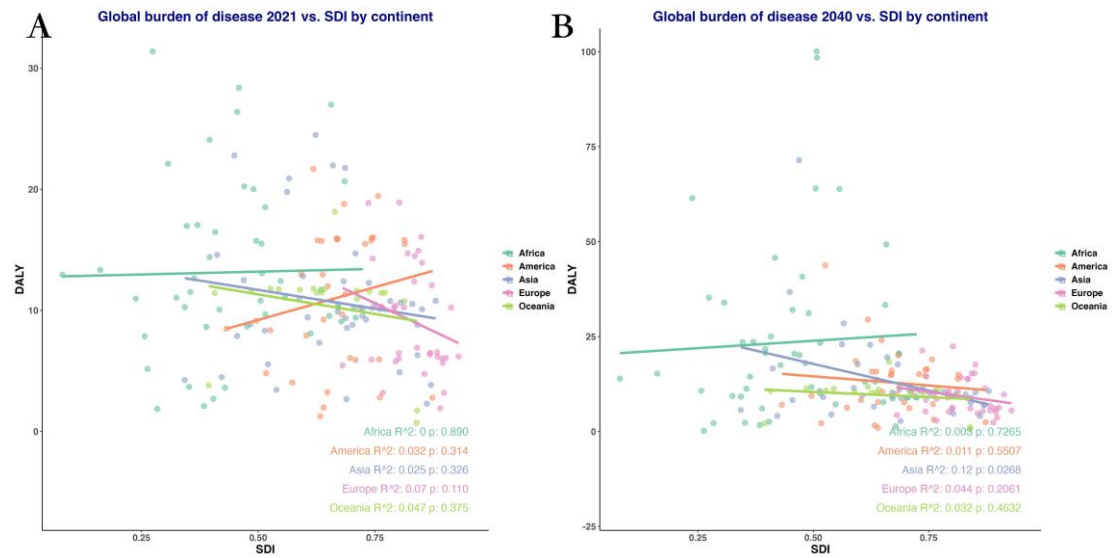
B



Supplementary Figure S2: Statistic analysis using MannU test of projected global burden of age-standardized DALY rate of Female Infertility, by continents. (A) in 2021 (B) in 2040.
 DALY = disability adjusted life-year.



Supplementary Figure S3: Correlation analysis between projected global burden of age-standardized DALY rate of Female Infertility and SDI levels, by continents. (A) in 2021 (B) in 2040. DALY = disability adjusted life-year.



Supplementary Table S1. The projected age-standardized rates of Female Infertility in 2019, 2022 and 2040 in different regions .

location	DALYs (Disability-Adjusted Life Years)		
	2019	2022	2040
Global	14.77 (5.27, 36.30)	15.45 (15.28, 15.63)	19.92 (18.52, 21.33)
High SDI	8.09 (2.30, 21.76)	7.87 (7.75, 7.98)	7.06 (6.12, 8.00)
High-middle SDI	16.65 (5.77, 42.41)	17.21 (17.14, 17.29)	20.24 (19.63, 20.85)
Middle SDI	16.49 (5.77, 40.34)	16.49 (16.35, 16.64)	17.02 (15.80, 18.24)
Low-middle SDI	15.36 (5.46, 37.41)	17.26 (16.83, 17.68)	29.21 (25.72, 32.71)
Low SDI	12.17 (4.67, 29.08)	13.30 (13.05, 13.55)	20.25 (18.19, 22.32)
Andean Latin America	1.21 (0.17, 4.20)	3.41 (3.00, 3.82)	14.18 (10.89, 17.46)
Australasia	0.90 (0.13, 3.81)	0.87 (0.85, 0.88)	0.67 (0.55, 0.80)
Caribbean	13.32 (4.94, 33.46)	13.28 (13.07, 13.49)	13.42 (11.70, 15.15)
Central Asia	8.48 (2.71, 21.06)	8.48 (8.37, 8.59)	8.88 (7.95, 9.81)
Central Europe	13.64 (4.28, 34.89)	13.65 (13.48, 13.82)	13.94 (12.59, 15.30)
Central Latin America	8.54 (2.52, 22.57)	8.72 (8.65, 8.79)	9.88 (9.30, 10.45)
Central Sub-Saharan Africa	11.31 (4.35, 26.78)	17.06 (15.90, 18.21)	44.77 (35.35, 54.18)
East Asia	21.66 (7.37, 55.79)	21.39 (21.25, 21.53)	20.20 (19.09, 21.32)
Eastern Europe	20.12 (7.10, 51.65)	20.17 (20.07, 20.28)	20.86 (19.99, 21.74)
Eastern Sub-Saharan Africa	8.79 (3.24, 20.75)	11.46 (11.05, 11.88)	25.40 (22.01, 28.80)
High-income Asia Pacific	3.09 (0.24, 12.44)	3.46 (3.35, 3.57)	5.71 (4.81, 6.62)
High-income North America	5.42 (0.81, 16.13)	4.93 (4.66, 5.19)	3.02 (0.82, 5.22)
North Africa and Middle East	9.22 (3.23, 22.00)	11.70 (11.30, 12.09)	24.01 (20.95, 27.06)
Oceania	5.96 (2.07, 14.26)	5.77 (5.63, 5.90)	3.97 (2.86, 5.08)
South Asia	19.64 (6.99, 46.58)	20.48 (19.77, 21.19)	28.37 (22.55, 34.19)

Southeast Asia	15.84 (5.42, 40.82)	16.21 (15.99, 16.42)	17.84 (16.06, 19.62)
Southern Latin America	5.89 (1.05, 17.28)	5.98 (5.94, 6.02)	6.50 (6.21, 6.79)
Southern Sub-Saharan Africa	8.04 (2.21, 21.35)	9.00 (8.33, 9.66)	12.16 (6.67, 17.66)
Tropical Latin America	9.44 (2.93, 24.81)	9.26 (9.10, 9.42)	7.93 (6.58, 9.28)
Western Europe	7.10 (1.63, 19.98)	7.10 (6.91, 7.29)	7.53 (5.98, 9.08)

Supplementary Table S2. The global projected rates of Female Infertility from 2021 to 2040, by ages .

year	15-19 years	20-24 years	25-29 years	30-34 years	35-39 years	40-44 years	45-49 years
2021	1.80 (0.18, 6.16)	18.85 (4.55, 50.88)	26.31 (5.15, 75.32)	36.78 (7.25, 99.81)	50.00 (12.08, 142.55)	35.95 (7.53, 112.33)	0.74 (0.09, 4.48)
2022	1.77 (0.17, 6.30)	19.35 (4.64, 52.26)	26.90 (5.21, 76.53)	37.27 (7.24, 100.67)	50.82 (12.15, 145.78)	36.40 (7.46, 114.70)	0.68 (0.09, 4.05)
2023	1.75 (0.16, 6.14)	19.82 (4.71, 53.73)	27.39 (5.28, 77.25)	37.68 (7.27, 101.55)	51.32 (12.14, 148.37)	37.03 (7.52, 117.41)	0.63 (0.09, 3.65)
2024	1.73 (0.16, 6.21)	20.08 (4.72, 54.96)	27.59 (5.33, 77.32)	37.74 (7.22, 101.75)	51.36 (12.09, 149.10)	37.70 (7.55, 119.63)	0.60 (0.08, 3.41)
2025	1.71 (0.15, 6.12)	20.13 (4.80, 55.06)	27.55 (5.33, 77.64)	37.48 (7.24, 101.15)	50.93 (12.04, 148.00)	38.29 (7.71, 121.70)	0.59 (0.09, 3.37)
2026	1.68 (0.15, 6.01)	20.07 (4.77, 55.19)	27.57 (5.44, 77.80)	37.13 (7.24, 99.97)	50.39 (12.04, 146.20)	38.61 (7.79, 123.18)	0.61 (0.08, 3.41)
2027	1.64 (0.15, 5.83)	19.96 (4.82, 54.38)	27.66 (5.50, 78.58)	36.74 (7.24, 98.53)	49.81 (11.84, 144.40)	38.65 (7.84, 124.08)	0.63 (0.08, 3.75)
2028	1.61 (0.16, 5.79)	19.84 (4.79, 53.65)	27.84 (5.62, 79.46)	36.41 (7.19, 97.83)	49.26 (11.60, 142.71)	38.51 (7.83, 123.32)	0.67 (0.08, 4.08)
2029	1.60 (0.16, 5.75)	19.80 (4.84, 53.69)	28.12 (5.77, 80.48)	36.20 (7.07, 97.40)	48.78 (11.34, 141.48)	38.29 (7.75, 122.25)	0.69 (0.08, 4.21)
2030	1.62 (0.15, 5.74)	20.18 (5.02, 54.90)	29.13 (6.02, 83.29)	36.83 (7.27, 98.23)	48.94 (11.54, 142.52)	38.25 (7.75, 122.15)	0.70 (0.08, 4.34)
2031	1.67 (0.16, 5.89)	21.07 (5.25, 57.32)	31.02 (6.43, 88.41)	38.58 (7.71, 102.18)	49.90 (11.80, 146.10)	38.56 (7.83, 122.63)	0.68 (0.08, 4.20)
2032	1.73 (0.16, 6.15)	22.15 (5.60, 59.53)	33.11 (6.94, 94.19)	40.79 (8.18, 107.05)	51.17 (12.33, 149.74)	39.02 (7.95, 123.58)	0.66 (0.08, 4.04)
2033	1.78 (0.16, 6.47)	23.12 (5.99, 60.90)	34.81 (7.32, 99.33)	42.79 (8.60, 111.54)	52.21 (12.71, 151.84)	39.36 (8.06, 124.08)	0.64 (0.08, 3.88)
2034	1.80 (0.15, 6.51)	23.60 (6.06, 60.68)	35.51 (7.50, 101.50)	43.84 (8.86, 113.74)	52.42 (12.69, 152.07)	39.33 (8.04, 123.55)	0.62 (0.08, 3.79)
2035	1.82 (0.15, 6.68)	23.97 (6.11, 62.01)	35.76 (7.59, 102.33)	44.59 (8.90, 115.39)	52.56 (12.67, 153.20)	39.41 (7.98, 123.78)	0.64 (0.09, 3.81)
2036	1.87 (0.15, 6.83)	24.69 (6.20, 64.46)	36.29 (7.65, 103.23)	45.75 (9.11, 118.76)	53.47 (12.73, 156.91)	39.93 (7.98, 125.56)	0.68 (0.09, 3.99)
2037	1.93 (0.15, 7.08)	25.41 (6.30, 66.64)	36.85 (7.81, 104.50)	46.84 (9.27, 122.91)	54.58 (12.77, 160.66)	40.49 (7.93, 127.64)	0.72 (0.09, 4.29)
2038	1.95 (0.13, 7.16)	25.79 (6.36, 67.36)	37.11 (8.00, 104.94)	47.32 (9.11, 125.76)	55.28 (12.80, 163.24)	40.60 (7.77, 128.44)	0.75 (0.09, 4.43)
2039	2.03 (0.11, 7.41)	26.64 (6.52, 70.35)	37.62 (7.69, 109.14)	47.75 (8.91, 125.37)	57.36 (12.79, 169.09)	40.85 (7.57, 132.02)	0.60 (0.09, 3.17)
2040	2.03 (0.10, 7.63)	26.72 (6.64, 70.76)	37.67 (7.68, 106.48)	47.78 (8.84, 128.55)	57.95 (12.88, 167.42)	40.93 (7.94, 127.95)	0.65 (0.09, 3.67)

Supplementary Table S3. Top and Bottom 10 regions of the projected EAPC of age-standardized rates of Female Infertility from 2022 to 2040.

Top

Rank	DALYs (Disability-Adjusted Life Years) Country	DALYs (Disability-Adjusted Life Years) Value
1	Andean Latin America	7.79 (7.0547, 8.5242)
2	Central Sub-Saharan Africa	5.36 (5.0248, 5.7062)
3	Eastern Sub-Saharan Africa	4.44 (4.2087, 4.6724)
4	North Africa and Middle East	4.02 (3.8263, 4.2046)
5	High-income Asia Pacific	2.80 (2.7093, 2.8922)
6	South Asia	1.82 (1.7824, 1.8595)
7	Southern Sub-Saharan Africa	1.69 (1.6525, 1.7186)
8	Central Latin America	0.69 (0.6846, 0.6957)
9	Southeast Asia	0.53 (0.5317, 0.5383)
10	Southern Latin America	0.46 (0.4619, 0.4669)

Bottom

Rank	DALYs (Disability-Adjusted Life Years) Country	DALYs (Disability-Adjusted Life Years) Value
1	High-income North America	-2.66 (-2.7417, -2.5769)
2	Oceania	-2.05 (-2.0941, -1.9967)
3	Australasia	-1.39 (-1.4088, -1.3642)
4	Tropical Latin America	-0.86 (-0.8640, -0.8470)
5	East Asia	-0.32 (-0.3166, -0.3143)
6	Caribbean	0.06 (0.0578, 0.0579)
7	Central Europe	0.12 (0.1171, 0.1175)
8	Eastern Europe	0.19 (0.1866, 0.1875)
9	Central Asia	0.26 (0.2582, 0.2598)
10	Western Europe	0.32 (0.3207, 0.3231)

Supplementary Table S4. Top and Bottom 10 regions of the projected age-standardized rates of Female Infertility in 2040.

Rank	DALYs (Disability-Adjusted Life Years) Country	DALYs (Disability-Adjusted Life Years) Value
1	Central Sub-Saharan Africa	29.37 (24.58, 34.16)
2	South Asia	23.98 (21.03, 26.94)
3	East Asia	20.86 (20.29, 21.43)
4	Eastern Europe	20.48 (20.04, 20.92)
5	Eastern Sub-Saharan Africa	17.66 (15.93, 19.38)
6	North Africa and Middle East	17.17 (15.60, 18.73)
7	Southeast Asia	16.93 (16.03, 17.83)
8	Central Europe	13.78 (13.09, 14.47)
9	Caribbean	13.34 (12.47, 14.22)
10	Southern Sub-Saharan Africa	10.40 (7.61, 13.19)
Bottom		
Rank	DALYs (Disability-Adjusted Life Years) Country	DALYs (Disability-Adjusted Life Years) Value
1	Australasia	0.78 (0.72, 0.84)
2	High-income North America	4.08 (2.96, 5.20)
3	High-income Asia Pacific	4.46 (4.00, 4.92)
4	Oceania	4.97 (4.41, 5.53)
5	Southern Latin America	6.21 (6.06, 6.36)
6	Western Europe	7.29 (6.50, 8.08)
7	Andean Latin America	8.19 (6.52, 9.87)
8	Central Asia	8.66 (8.19, 9.13)
9	Tropical Latin America	8.67 (7.98, 9.35)
10	Central Latin America	9.24 (8.94, 9.53)

Supplementary Table S5. The projected age-standardized rates of Female Infertility in 2019 and 2040 in different countries.

location	DALYs (Disability-Adjusted Life Years)	
	2019	2040
Afghanistan	4.27 (1.56, 10.07)	5.63 (3.65, 7.62)
Albania	5.49 (2.07, 11.18)	4.33 (0.97, 7.69)
Algeria	9.53 (2.83, 23.98)	7.74 (5.20, 10.28)
American Samoa	11.00 (3.20, 28.23)	10.51 (10.35, 10.68)
Andorra	6.08 (1.31, 16.84)	6.03 (5.66, 6.40)
Angola	20.29 (6.94, 49.18)	20.14 (19.67, 20.61)
Antigua and Barbuda	15.93 (5.08, 41.57)	16.22 (15.84, 16.60)
Argentina	5.87 (1.04, 16.91)	6.17 (5.84, 6.50)
Armenia	2.66 (0.93, 6.21)	2.75 (2.28, 3.23)
Australia	0.73 (0.13, 3.19)	0.60 (0.50, 0.70)
Austria	16.19 (4.86, 42.03)	15.32 (12.83, 17.80)
Azerbaijan	12.45 (3.95, 32.08)	17.69 (11.48, 23.90)
Bahamas	15.46 (4.84, 39.97)	14.85 (14.46, 15.25)
Bahrain	10.44 (2.93, 26.66)	10.24 (9.92, 10.55)
Bangladesh	7.83 (3.11, 15.83)	17.99 (15.97, 20.00)
Barbados	15.89 (5.19, 40.80)	14.65 (14.41, 14.90)
Belarus	14.23 (4.75, 35.84)	14.47 (14.17, 14.77)
Belgium	13.97 (4.01, 35.76)	17.62 (13.16, 22.07)
Belize	8.08 (2.27, 21.03)	8.30 (6.23, 10.37)
Benin	3.71 (1.15, 9.03)	2.30 (1.44, 3.15)
Bermuda	16.02 (5.07, 40.53)	13.89 (13.65, 14.14)

Bhutan	7.84 (2.25, 19.80)	8.30 (8.18, 8.42)
Bolivia (Plurinational State of)	2.14 (0.17, 7.84)	3.23 (2.00, 4.46)
Bosnia and Herzegovina	10.36 (2.95, 26.51)	9.51 (9.24, 9.77)
Botswana	11.52 (3.19, 29.33)	13.13 (12.44, 13.81)
Brazil	9.34 (2.87, 24.74)	7.74 (6.38, 9.10)
Brunei Darussalam	1.81 (0.14, 7.77)	3.33 (2.66, 4.00)
Bulgaria	10.30 (3.09, 25.57)	10.62 (10.48, 10.77)
Burkina Faso	7.90 (1.60, 22.00)	10.72 (5.95, 15.49)
Burundi	1.87 (0.60, 4.53)	2.19 (0.30, 4.09)
Cabo Verde	14.63 (4.18, 35.41)	13.69 (13.34, 14.05)
Cambodia	5.00 (1.90, 11.13)	71.43 (56.75, 86.12)
Cameroon	19.95 (6.51, 52.89)	31.17 (17.18, 45.17)
Canada	2.84 (0.27, 8.90)	2.44 (2.32, 2.56)
Central African Republic	31.28 (11.59, 73.99)	35.24 (30.86, 39.63)
Chad	3.18 (0.95, 8.22)	61.45 (44.15, 78.75)
Chile	5.92 (1.01, 17.67)	7.18 (6.46, 7.90)
China	21.88 (7.46, 56.35)	20.47 (19.35, 21.58)
Colombia	1.27 (0.23, 3.37)	1.59 (1.01, 2.17)
Comoros	26.34 (9.21, 64.15)	32.05 (21.95, 42.14)
Congo	15.89 (4.97, 37.65)	21.34 (15.41, 27.26)
Cook Islands	11.58 (3.48, 28.66)	10.42 (10.09, 10.75)
Costa Rica	9.57 (2.70, 26.08)	9.96 (9.68, 10.24)
Côte d'Ivoire	16.45 (4.96, 42.53)	25.07 (15.49, 34.65)
Croatia	10.37 (2.87, 25.96)	10.65 (10.26, 11.03)

Cuba	16.13 (5.20, 39.89)	14.81 (14.43, 15.19)
Cyprus	6.28 (1.47, 16.21)	7.54 (6.69, 8.39)
Czechia	15.14 (4.84, 38.79)	13.31 (9.84, 16.77)
Democratic People's Republic of Korea	15.97 (5.01, 39.21)	15.07 (14.10, 16.05)
Democratic Republic of the Congo	5.80 (2.20, 12.53)	56.97 (42.27, 71.66)
Denmark	1.94 (0.15, 6.19)	2.41 (1.40, 3.43)
Djibouti	28.31 (9.90, 66.27)	20.47 (9.42, 31.52)
Dominica	15.55 (5.16, 37.61)	15.10 (14.91, 15.28)
Dominican Republic	12.98 (4.25, 34.44)	18.52 (10.72, 26.32)
Ecuador	1.99 (0.16, 8.04)	1.01 (0.00, 2.02)
Egypt	5.78 (2.12, 13.22)	49.25 (39.14, 59.35)
El Salvador	4.07 (0.58, 12.24)	6.27 (4.30, 8.24)
Equatorial Guinea	20.71 (7.08, 48.95)	20.57 (20.06, 21.08)
Eritrea	24.19 (8.54, 60.63)	21.72 (19.26, 24.19)
Estonia	14.62 (4.81, 36.54)	13.77 (13.54, 14.01)
Eswatini	6.81 (1.55, 18.92)	10.46 (6.36, 14.56)
Ethiopia	10.16 (3.31, 26.03)	9.17 (6.52, 11.81)
Fiji	18.13 (6.25, 44.22)	18.37 (18.08, 18.67)
Finland	4.83 (0.87, 13.37)	4.78 (4.11, 5.46)
France	12.61 (3.66, 32.54)	13.86 (9.56, 18.16)
Gabon	27.17 (9.45, 66.69)	33.35 (24.67, 42.03)
Gambia	12.93 (3.57, 34.04)	21.40 (15.89, 26.91)
Georgia	8.80 (2.36, 22.23)	8.89 (8.43, 9.35)
Germany	3.29 (0.46, 10.49)	3.68 (1.86, 5.49)

Ghana	4.08 (1.16, 9.84)	63.85 (49.64, 78.06)
Greece	5.94 (1.10, 16.36)	5.24 (4.53, 5.94)
Greenland	2.80 (0.26, 9.22)	3.13 (3.04, 3.22)
Grenada	15.86 (5.24, 39.98)	15.11 (14.27, 15.95)
Guam	10.87 (3.05, 29.07)	9.94 (9.63, 10.25)
Guatemala	3.15 (1.01, 7.32)	43.76 (31.91, 55.62)
Guinea	10.99 (3.89, 23.49)	9.36 (7.78, 10.95)
Guinea-Bissau	11.55 (2.91, 30.86)	11.27 (10.91, 11.64)
Guyana	21.73 (7.15, 54.88)	29.48 (20.20, 38.76)
Haiti	8.53 (3.33, 18.28)	7.05 (5.96, 8.13)
Honduras	9.28 (2.46, 24.75)	9.39 (4.89, 13.90)
Hungary	10.35 (3.08, 25.75)	9.92 (9.62, 10.22)
Iceland	6.52 (1.47, 17.53)	7.09 (6.52, 7.67)
India	20.91 (7.40, 50.63)	28.47 (22.88, 34.06)
Indonesia	22.01 (7.63, 54.80)	19.52 (16.65, 22.40)
Iran (Islamic Republic of)	10.09 (2.99, 26.34)	12.18 (9.34, 15.01)
Iraq	10.50 (3.09, 26.26)	10.27 (10.05, 10.49)
Ireland	6.53 (1.52, 17.92)	5.33 (4.85, 5.81)
Israel	5.02 (0.95, 13.45)	4.66 (3.51, 5.82)
Italy	6.17 (0.68, 21.49)	6.06 (4.78, 7.34)
Jamaica	18.67 (6.13, 47.07)	20.05 (19.38, 20.72)
Japan	3.65 (0.27, 14.70)	6.88 (5.85, 7.91)
Jordan	9.24 (3.59, 20.13)	10.70 (9.43, 11.97)
Kazakhstan	9.57 (2.87, 23.66)	8.97 (6.01, 11.94)

Kenya	2.24 (0.30, 6.68)	98.43 (77.00, 119.87)
Kiribati	11.91 (3.40, 29.88)	10.83 (10.57, 11.10)
Kuwait	10.10 (2.83, 23.83)	10.30 (9.99, 10.62)
Kyrgyzstan	12.87 (4.11, 31.79)	17.68 (11.15, 24.21)
Lao People's Democratic Republic	10.86 (3.26, 27.26)	10.10 (9.80, 10.40)
Latvia	14.69 (4.85, 37.55)	14.27 (10.94, 17.60)
Lebanon	14.83 (4.65, 34.17)	11.87 (9.18, 14.57)
Lesotho	4.20 (1.50, 9.62)	100.11 (76.83, 123.40)
Liberia	16.78 (4.83, 41.88)	23.59 (17.61, 29.58)
Libya	9.15 (2.55, 22.24)	10.70 (8.43, 12.97)
Lithuania	14.85 (4.87, 38.37)	15.31 (11.83, 18.79)
Luxembourg	5.79 (1.18, 16.44)	5.16 (4.55, 5.77)
Madagascar	14.30 (4.70, 34.65)	20.66 (16.46, 24.86)
Malawi	2.09 (0.77, 4.77)	1.71 (0.38, 3.05)
Malaysia	12.39 (3.47, 31.83)	11.26 (10.98, 11.54)
Maldives	19.90 (8.16, 40.82)	22.96 (15.28, 30.64)
Mali	5.16 (1.61, 12.45)	0.19 (-2.83, 3.22)
Malta	6.53 (1.50, 17.81)	6.27 (5.69, 6.85)
Marshall Islands	11.82 (3.58, 29.25)	11.23 (10.83, 11.64)
Mauritania	15.93 (4.25, 39.95)	11.71 (8.49, 14.92)
Mauritius	10.47 (2.83, 27.10)	8.96 (8.70, 9.22)
Mexico	12.22 (3.53, 32.33)	10.46 (9.67, 11.25)
Micronesia (Federated States of)	11.68 (3.56, 29.43)	11.16 (10.74, 11.59)
Monaco	6.11 (1.36, 17.08)	6.27 (5.94, 6.60)

Mongolia	9.35 (2.88, 23.07)	9.55 (9.09, 10.01)
Montenegro	10.06 (2.97, 26.04)	8.94 (8.61, 9.27)
Morocco	12.43 (3.77, 31.22)	7.16 (0.43, 13.89)
Mozambique	22.07 (7.79, 54.99)	33.92 (21.58, 46.26)
Myanmar	5.56 (2.15, 12.44)	9.09 (4.51, 13.67)
Namibia	8.15 (2.09, 22.42)	13.12 (6.16, 20.07)
Nauru	11.74 (3.64, 29.83)	11.81 (11.57, 12.05)
Nepal	4.50 (1.76, 9.79)	4.11 (3.46, 4.77)
Netherlands	6.70 (1.66, 17.81)	5.54 (5.16, 5.92)
New Zealand	1.79 (0.18, 7.49)	1.12 (0.48, 1.76)
Nicaragua	4.82 (0.90, 14.16)	2.19 (-0.83, 5.21)
Niger	13.52 (3.78, 33.71)	15.27 (9.68, 20.86)
Nigeria	9.61 (2.39, 25.13)	10.01 (7.74, 12.28)
Niue	11.70 (3.55, 29.17)	10.57 (10.29, 10.85)
North Macedonia	10.45 (2.95, 26.03)	8.31 (7.95, 8.67)
Northern Mariana Islands	11.46 (3.45, 29.22)	11.18 (10.68, 11.68)
Norway	10.48 (2.56, 28.56)	9.74 (8.24, 11.23)
Oman	10.83 (3.07, 26.39)	10.41 (10.23, 10.59)
Pakistan	22.88 (4.81, 64.66)	36.72 (10.49, 62.94)
Palau	11.73 (3.58, 29.57)	10.22 (9.81, 10.62)
Palestine	10.81 (3.25, 27.06)	11.45 (11.13, 11.76)
Panama	11.32 (3.30, 29.56)	11.69 (11.29, 12.10)
Papua New Guinea	3.77 (1.27, 8.81)	2.14 (0.69, 3.58)
Paraguay	13.20 (4.57, 32.65)	13.59 (9.92, 17.27)

Peru	0.55 (0.13, 1.65)	24.02 (18.38, 29.66)
Philippines	24.38 (6.38, 59.64)	22.82 (8.61, 37.04)
Poland	18.89 (6.09, 47.72)	22.44 (18.21, 26.68)
Portugal	6.06 (1.46, 17.14)	5.28 (4.82, 5.75)
Puerto Rico	15.55 (4.78, 39.57)	14.98 (14.77, 15.18)
Qatar	10.57 (2.95, 26.70)	9.78 (9.40, 10.17)
Republic of Korea	2.05 (0.15, 8.07)	3.63 (2.91, 4.34)
Republic of Moldova	15.34 (5.34, 38.64)	21.07 (16.71, 25.42)
Romania	10.10 (2.97, 26.39)	9.58 (8.80, 10.35)
Russian Federation	21.19 (7.50, 54.64)	21.46 (21.19, 21.73)
Rwanda	1.26 (0.43, 3.02)	17.46 (13.02, 21.90)
Saint Kitts and Nevis	15.92 (5.50, 40.07)	16.42 (15.66, 17.19)
Saint Lucia	15.89 (5.25, 40.22)	16.00 (15.42, 16.58)
Saint Vincent and the Grenadines	15.82 (5.22, 39.91)	15.77 (15.11, 16.43)
Samoa	11.85 (3.55, 29.51)	10.98 (10.70, 11.26)
San Marino	6.20 (1.39, 16.22)	6.66 (6.23, 7.08)
Sao Tome and Principe	5.76 (1.01, 16.29)	7.65 (5.07, 10.23)
Saudi Arabia	10.76 (3.02, 26.81)	9.53 (9.26, 9.79)
Senegal	8.79 (3.24, 18.65)	6.06 (3.16, 8.96)
Serbia	10.41 (3.11, 26.17)	8.65 (8.00, 9.30)
Seychelles	10.32 (2.84, 26.52)	8.96 (8.81, 9.12)
Sierra Leone	16.97 (5.15, 41.34)	23.52 (14.83, 32.21)
Singapore	2.20 (0.16, 8.94)	4.09 (3.52, 4.67)
Slovakia	10.23 (3.08, 25.77)	10.66 (10.17, 11.15)

Slovenia	6.95 (1.64, 19.19)	6.05 (3.29, 8.80)
Solomon Islands	11.55 (3.41, 29.14)	10.67 (10.31, 11.04)
Somalia	12.79 (4.12, 30.63)	13.91 (13.45, 14.36)
South Africa	9.16 (2.27, 24.97)	1.36 (-4.89, 7.62)
South Sudan	12.40 (3.94, 29.60)	14.43 (13.93, 14.93)
Spain	3.25 (0.33, 10.51)	2.86 (1.49, 4.23)
Sri Lanka	8.55 (2.24, 22.15)	8.82 (8.21, 9.43)
Sudan	18.30 (6.19, 43.93)	23.32 (18.37, 28.28)
Suriname	15.75 (5.21, 38.67)	15.79 (15.27, 16.31)
Sweden	12.14 (3.37, 32.80)	11.34 (10.66, 12.02)
Switzerland	6.35 (1.44, 17.56)	5.53 (4.90, 6.16)
Syrian Arab Republic	9.56 (2.92, 24.04)	6.74 (3.02, 10.46)
Taiwan (Province of China)	15.48 (4.75, 39.07)	12.90 (11.94, 13.85)
Tajikistan	3.45 (1.25, 7.41)	4.47 (3.50, 5.45)
Thailand	9.17 (2.41, 24.38)	11.12 (10.03, 12.21)
Timor-Leste	8.26 (2.35, 20.80)	10.69 (8.29, 13.09)
Togo	5.98 (2.07, 13.29)	45.74 (36.45, 55.02)
Tokelau	11.60 (3.51, 29.23)	10.20 (9.98, 10.42)
Tonga	11.66 (3.43, 30.35)	10.14 (9.90, 10.38)
Trinidad and Tobago	19.55 (6.46, 48.86)	18.98 (18.16, 19.80)
Tunisia	10.30 (3.14, 24.67)	8.72 (7.39, 10.04)
Turkmenistan	9.98 (3.09, 25.06)	9.27 (8.98, 9.56)
Tuvalu	11.92 (3.63, 28.85)	10.37 (9.85, 10.90)
Uganda	2.69 (1.00, 5.85)	2.59 (0.88, 4.30)

Ukraine	18.90 (6.40, 46.81)	21.33 (18.43, 24.22)
United Arab Emirates	10.80 (3.16, 26.48)	10.67 (10.36, 10.97)
United Kingdom	8.00 (1.49, 23.79)	7.30 (6.30, 8.30)
United Republic of Tanzania	9.68 (4.01, 20.38)	8.83 (7.92, 9.73)
United States of America	5.71 (0.86, 16.85)	3.11 (0.68, 5.55)
United States Virgin Islands	15.10 (4.83, 38.53)	14.08 (13.80, 14.35)
Uruguay	6.04 (1.03, 18.19)	7.68 (6.82, 8.53)
Uzbekistan	7.35 (2.16, 18.63)	6.53 (4.74, 8.31)
Vanuatu	11.60 (3.51, 28.34)	11.32 (11.02, 11.62)
Venezuela (Bolivarian Republic of)	7.99 (2.09, 22.51)	8.14 (7.78, 8.51)
Viet Nam	4.35 (0.86, 11.87)	3.24 (2.28, 4.21)
Yemen	14.41 (4.75, 34.99)	16.57 (11.91, 21.23)
Zambia	3.92 (1.51, 8.72)	63.98 (50.68, 77.29)
Zimbabwe	2.90 (1.06, 6.43)	40.77 (27.30, 54.23)

Supplementary Table S6. The projected EAPC of Female Infertility from 1990 to 2021 and from 2022 to 2040 in different countries.

location	DALYs (Disability-Adjusted Life Years)	
	1990-2021	2022-2040
Afghanistan	-2.38 (-2.7913, -1.9756)	1.40 (1.3725, 1.4177)
Albania	-1.43 (-2.4736, -0.3846)	-1.18 (-1.1957, -1.1634)
Algeria	2.75 (2.4061, 3.0893)	-1.06 (-1.0748, -1.0486)
American Samoa	-0.13 (-0.1550, -0.1013)	-0.21 (-0.2121, -0.2110)
Andorra	-0.24 (-0.3034, -0.1742)	-0.03 (-0.0326, -0.0326)
Angola	0.26 (0.2308, 0.2866)	-0.04 (-0.0376, -0.0375)
Antigua and Barbuda	0.04 (0.0239, 0.0591)	0.08 (0.0785, 0.0786)
Argentina	-0.29 (-0.3723, -0.2061)	0.23 (0.2322, 0.2335)
Armenia	-2.76 (-3.3160, -2.1999)	0.15 (0.1482, 0.1487)
Australia	-0.19 (-0.3730, -0.0165)	-0.91 (-0.9194, -0.9002)
Austria	1.14 (0.7794, 1.4940)	-0.27 (-0.2747, -0.2730)
Azerbaijan	-0.38 (-1.5721, 0.8224)	1.80 (1.7591, 1.8341)
Bahamas	0.06 (0.0445, 0.0679)	-0.20 (-0.1977, -0.1968)
Bahrain	0.06 (0.0271, 0.0890)	-0.10 (-0.1021, -0.1018)
Bangladesh	2.78 (2.4131, 3.1575)	3.60 (3.4529, 3.7571)
Barbados	0.02 (-0.0022, 0.0376)	-0.39 (-0.3882, -0.3847)
Belarus	0.23 (0.1947, 0.2729)	0.07 (0.0744, 0.0746)
Belgium	2.35 (1.8285, 2.8724)	1.15 (1.1385, 1.1694)
Belize	1.54 (1.1268, 1.9540)	0.18 (0.1845, 0.1853)
Benin	-1.84 (-2.0962, -1.5822)	-2.39 (-2.4614, -2.3278)
Bermuda	0.06 (0.0486, 0.0803)	-0.68 (-0.6824, -0.6717)

Bhutan	-0.01 (-0.0343, 0.0044)	0.27 (0.2734, 0.2751)
Bolivia (Plurinational State of)	6.65 (3.8837, 9.4953)	2.10 (2.0455, 2.1478)
Bosnia and Herzegovina	0.15 (0.1168, 0.1858)	-0.40 (-0.4005, -0.3968)
Botswana	0.75 (0.2494, 1.2614)	0.61 (0.6071, 0.6158)
Brazil	1.62 (1.0037, 2.2382)	-0.92 (-0.9319, -0.9121)
Brunei Darussalam	-0.48 (-0.7461, -0.2193)	2.76 (2.6719, 2.8497)
Bulgaria	0.03 (0.0097, 0.0594)	0.15 (0.1495, 0.1500)
Burkina Faso	2.06 (1.2148, 2.9076)	1.51 (1.4809, 1.5337)
Burundi	-4.42 (-5.5105, -3.3263)	0.81 (0.8057, 0.8210)
Cabo Verde	0.43 (0.3840, 0.4769)	-0.32 (-0.3192, -0.3169)
Cambodia	-2.32 (-3.2303, -1.4071)	8.14 (7.3371, 8.9497)
Cameroon	0.37 (-0.8327, 1.5781)	2.15 (2.0986, 2.2064)
Canada	-0.21 (-0.2567, -0.1598)	-0.72 (-0.7269, -0.7149)
Central African Republic	0.74 (0.5065, 0.9647)	0.58 (0.5737, 0.5814)
Chad	-4.14 (-5.3850, -2.8730)	9.03 (8.0322, 10.0409)
Chile	-0.21 (-0.3268, -0.0840)	0.91 (0.9030, 0.9224)
China	0.02 (-0.0279, 0.0712)	-0.30 (-0.3036, -0.3014)
Colombia	1.35 (0.7176, 1.9779)	1.18 (1.1667, 1.1992)
Comoros	1.14 (0.5618, 1.7272)	0.98 (0.9644, 0.9865)
Congo	-0.54 (-1.2907, 0.2246)	1.37 (1.3516, 1.3954)
Cook Islands	-0.15 (-0.1690, -0.1324)	-0.51 (-0.5140, -0.5080)
Costa Rica	-0.08 (-0.0991, -0.0536)	0.19 (0.1854, 0.1862)
Côte d'Ivoire	2.60 (1.8767, 3.3233)	2.06 (2.0100, 2.1086)
Croatia	-0.14 (-0.2264, -0.0609)	0.14 (0.1379, 0.1383)

Cuba	-0.06 (-0.1238, 0.0107)	-0.39 (-0.3955, -0.3919)
Cyprus	-0.51 (-0.6761, -0.3355)	0.88 (0.8736, 0.8917)
Czechia	1.40 (0.8909, 1.9200)	-0.63 (-0.6317, -0.6226)
Democratic People's Republic of Korea	-0.04 (-0.0747, -0.0141)	-0.24 (-0.2456, -0.2442)
Democratic Republic of the Congo	-0.73 (-2.2568, 0.8131)	7.46 (6.7886, 8.1314)
Denmark	3.63 (2.4997, 4.7700)	1.11 (1.0988, 1.1276)
Djibouti	0.39 (-0.1715, 0.9643)	-1.65 (-1.6788, -1.6157)
Dominica	0.01 (-0.0004, 0.0266)	-0.14 (-0.1432, -0.1427)
Dominican Republic	1.89 (0.7077, 3.0806)	1.73 (1.6937, 1.7632)
Ecuador	9.15 (7.1341, 11.1983)	-3.41 (-3.5423, -3.2708)
Egypt	1.13 (0.5359, 1.7367)	7.27 (6.6372, 7.9115)
El Salvador	5.07 (2.8745, 7.3026)	2.18 (2.1290, 2.2401)
Equatorial Guinea	0.28 (0.2230, 0.3319)	-0.04 (-0.0353, -0.0353)
Eritrea	2.18 (1.9417, 2.4219)	-0.52 (-0.5281, -0.5217)
Estonia	0.30 (0.2593, 0.3424)	-0.28 (-0.2807, -0.2789)
Eswatini	-0.68 (-2.3987, 1.0779)	2.16 (2.1010, 2.2091)
Ethiopia	-0.58 (-0.9041, -0.2530)	-0.52 (-0.5245, -0.5182)
Fiji	-0.07 (-0.0860, -0.0458)	0.07 (0.0690, 0.0692)
Finland	1.29 (0.5173, 2.0706)	-0.04 (-0.0442, -0.0442)
France	1.94 (1.3801, 2.5118)	0.52 (0.5195, 0.5258)
Gabon	0.32 (-0.1618, 0.8080)	1.01 (0.9948, 1.0183)
Gambia	-0.56 (-0.9938, -0.1284)	2.44 (2.3669, 2.5051)
Georgia	-0.35 (-0.4446, -0.2592)	0.06 (0.0610, 0.0611)
Germany	4.48 (3.1579, 5.8214)	0.65 (0.6436, 0.6534)

Ghana	0.38 (-0.4963, 1.2670)	8.18 (7.3654, 8.9930)
Greece	-0.42 (-0.5431, -0.3065)	-0.58 (-0.5834, -0.5757)
Greenland	-0.15 (-0.2014, -0.1037)	0.53 (0.5317, 0.5383)
Grenada	0.03 (0.0078, 0.0469)	-0.22 (-0.2170, -0.2159)
Guam	-0.28 (-0.3116, -0.2512)	-0.42 (-0.4246, -0.4204)
Guatemala	-1.13 (-2.2757, 0.0327)	8.63 (7.7231, 9.5476)
Guinea	-0.16 (-0.4573, 0.1291)	-0.81 (-0.8166, -0.8014)
Guinea-Bissau	1.00 (0.8995, 1.1069)	-0.12 (-0.1158, -0.1155)
Guyana	-0.41 (-1.3818, 0.5764)	1.56 (1.5343, 1.5910)
Haiti	-0.24 (-0.4388, -0.0374)	-0.95 (-0.9586, -0.9377)
Honduras	0.57 (-1.4813, 2.6649)	0.06 (0.0614, 0.0615)
Hungary	0.02 (-0.0162, 0.0570)	-0.19 (-0.1867, -0.1859)
Iceland	-0.15 (-0.2717, -0.0280)	0.42 (0.4167, 0.4207)
India	2.39 (1.7569, 3.0287)	1.57 (1.5402, 1.5974)
Indonesia	1.58 (1.0284, 2.1396)	-0.60 (-0.6052, -0.5969)
Iran (Islamic Republic of)	-0.68 (-1.5484, 0.1908)	0.88 (0.8759, 0.8940)
Iraq	0.11 (0.0900, 0.1347)	-0.11 (-0.1109, -0.1106)
Ireland	-0.09 (-0.1808, -0.0053)	-0.97 (-0.9835, -0.9616)
Israel	0.26 (0.0416, 0.4826)	-0.31 (-0.3159, -0.3136)
Italy	2.81 (2.3617, 3.2620)	-0.07 (-0.0726, -0.0725)
Jamaica	0.02 (0.0018, 0.0426)	0.33 (0.3239, 0.3263)
Japan	-0.36 (-0.6460, -0.0766)	2.89 (2.7894, 2.9838)
Jordan	2.10 (1.7161, 2.4888)	0.72 (0.7181, 0.7302)
Kazakhstan	3.13 (2.4277, 3.8343)	-0.33 (-0.3293, -0.3268)

Kenya	-3.89 (-5.5972, -2.1444)	9.09 (8.0746, 10.1097)
Kiribati	-0.05 (-0.0724, -0.0218)	-0.45 (-0.4488, -0.4442)
Kuwait	-0.07 (-0.1072, -0.0324)	0.09 (0.0907, 0.0909)
Kyrgyzstan	0.63 (0.0353, 1.2201)	1.58 (1.5485, 1.6063)
Lao People's Democratic Republic	-0.19 (-0.2092, -0.1693)	-0.34 (-0.3396, -0.3369)
Latvia	2.62 (2.1530, 3.0962)	-0.15 (-0.1552, -0.1546)
Lebanon	1.92 (1.2918, 2.5461)	-1.11 (-1.1289, -1.1001)
Lesotho	-3.79 (-5.4157, -2.1391)	8.60 (7.6998, 9.5111)
Liberia	0.02 (-0.5905, 0.6316)	1.63 (1.6019, 1.6638)
Libya	2.36 (1.9039, 2.8086)	0.70 (0.6931, 0.7045)
Lithuania	2.29 (1.8687, 2.7182)	0.13 (0.1328, 0.1332)
Luxembourg	-0.07 (-0.2541, 0.1144)	-0.53 (-0.5377, -0.5311)
Madagascar	1.31 (0.4783, 2.1390)	1.85 (1.8067, 1.8859)
Malawi	-6.18 (-6.6207, -5.7290)	-0.97 (-0.9817, -0.9598)
Malaysia	-0.28 (-0.3125, -0.2469)	-0.46 (-0.4588, -0.4540)
Maldives	-1.54 (-2.0895, -0.9947)	0.76 (0.7501, 0.7633)
Mali	0.74 (-0.2590, 1.7583)	-13.17 (-15.5783, -10.6990)
Malta	-0.27 (-0.4877, -0.0502)	-0.18 (-0.1794, -0.1787)
Marshall Islands	-0.12 (-0.1460, -0.1033)	-0.23 (-0.2265, -0.2253)
Mauritania	4.27 (3.7725, 4.7599)	-1.52 (-1.5481, -1.4943)
Mauritius	-0.26 (-0.2893, -0.2372)	-0.73 (-0.7331, -0.7208)
Mexico	1.47 (0.8187, 2.1216)	-0.75 (-0.7536, -0.7407)
Micronesia (Federated States of)	-0.01 (-0.0325, 0.0100)	-0.21 (-0.2078, -0.2068)
Monaco	-0.13 (-0.1823, -0.0802)	0.13 (0.1295, 0.1299)

Mongolia	0.36 (0.3043, 0.4059)	0.09 (0.0872, 0.0873)
Montenegro	-0.01 (-0.0272, 0.0072)	-0.57 (-0.5766, -0.5690)
Morocco	3.85 (2.6445, 5.0623)	-2.79 (-2.8825, -2.7007)
Mozambique	-1.09 (-1.8300, -0.3347)	2.09 (2.0425, 2.1445)
Myanmar	-3.44 (-4.0222, -2.8496)	2.45 (2.3843, 2.5246)
Namibia	-1.94 (-4.3398, 0.5119)	2.30 (2.2369, 2.3599)
Nauru	-0.12 (-0.1393, -0.0958)	0.03 (0.0339, 0.0339)
Nepal	-0.50 (-1.7544, 0.7755)	-0.45 (-0.4562, -0.4514)
Netherlands	0.00 (-0.0425, 0.0432)	-0.90 (-0.9087, -0.8899)
New Zealand	4.22 (3.4188, 5.0336)	-2.27 (-2.3247, -2.2053)
Nicaragua	3.83 (1.9350, 5.7614)	-3.96 (-4.1444, -3.7762)
Niger	-0.46 (-1.1793, 0.2634)	0.61 (0.6026, 0.6112)
Nigeria	-1.12 (-1.5130, -0.7180)	0.20 (0.2012, 0.2022)
Niue	-0.17 (-0.1833, -0.1523)	-0.49 (-0.4885, -0.4831)
North Macedonia	0.07 (0.0472, 0.0909)	-1.10 (-1.1110, -1.0831)
Northern Mariana Islands	-0.05 (-0.0782, -0.0173)	-0.12 (-0.1153, -0.1150)
Norway	-0.13 (-0.2619, -0.0052)	-0.32 (-0.3223, -0.3199)
Oman	-0.20 (-0.2232, -0.1795)	-0.18 (-0.1837, -0.1829)
Pakistan	-5.46 (-9.9167, -0.7835)	2.25 (2.1927, 2.3107)
Palau	-0.12 (-0.1418, -0.0892)	-0.67 (-0.6721, -0.6618)
Palestine	0.07 (0.0437, 0.0863)	0.26 (0.2601, 0.2616)
Panama	-0.07 (-0.0965, -0.0508)	0.15 (0.1480, 0.1485)
Papua New Guinea	-1.86 (-2.3613, -1.3461)	-2.94 (-3.0425, -2.8405)
Paraguay	1.91 (1.4074, 2.4228)	0.22 (0.2178, 0.2189)

Peru	7.08 (5.5385, 8.6525)	9.02 (8.0227, 10.0256)
Philippines	6.52 (3.8249, 9.2944)	-0.35 (-0.3523, -0.3494)
Poland	1.29 (0.9128, 1.6706)	0.86 (0.8466, 0.8635)
Portugal	-0.26 (-0.3307, -0.1987)	-0.64 (-0.6460, -0.6365)
Puerto Rico	-0.05 (-0.0647, -0.0337)	-0.18 (-0.1754, -0.1747)
Qatar	0.08 (0.0553, 0.1127)	-0.37 (-0.3691, -0.3659)
Republic of Korea	-0.16 (-0.3487, 0.0211)	2.60 (2.5250, 2.6830)
Republic of Moldova	1.33 (0.3273, 2.3528)	1.59 (1.5635, 1.6225)
Romania	0.24 (0.1394, 0.3361)	-0.25 (-0.2557, -0.2542)
Russian Federation	0.24 (0.2237, 0.2564)	0.06 (0.0648, 0.0649)
Rwanda	-0.71 (-2.0372, 0.6329)	8.45 (7.5789, 9.3221)
Saint Kitts and Nevis	0.04 (0.0131, 0.0613)	0.16 (0.1566, 0.1572)
Saint Lucia	0.10 (0.0832, 0.1210)	0.04 (0.0439, 0.0439)
Saint Vincent and the Grenadines	-0.03 (-0.0555, -0.0137)	0.03 (0.0280, 0.0281)
Samoa	-0.08 (-0.0932, -0.0628)	-0.36 (-0.3575, -0.3545)
San Marino	-0.14 (-0.1940, -0.0804)	0.35 (0.3447, 0.3475)
Sao Tome and Principe	-0.06 (-1.2456, 1.1435)	1.48 (1.4511, 1.5017)
Saudi Arabia	-0.03 (-0.0498, -0.0073)	-0.58 (-0.5811, -0.5734)
Senegal	1.73 (0.9126, 2.5537)	-1.73 (-1.7699, -1.7000)
Serbia	-0.10 (-0.1597, -0.0464)	-0.87 (-0.8827, -0.8650)
Seychelles	-0.26 (-0.2832, -0.2348)	-0.67 (-0.6732, -0.6629)
Sierra Leone	-0.61 (-1.2217, 0.0152)	1.58 (1.5523, 1.6104)
Singapore	0.05 (-0.2247, 0.3235)	2.85 (2.7582, 2.9481)
Slovakia	-0.22 (-0.2971, -0.1341)	0.21 (0.2092, 0.2102)

Slovenia	4.71 (3.8103, 5.6126)	-0.66 (-0.6670, -0.6568)
Solomon Islands	0.01 (-0.0299, 0.0533)	-0.37 (-0.3728, -0.3696)
Somalia	0.18 (0.1425, 0.2118)	0.40 (0.3934, 0.3970)
South Africa	-0.78 (-1.6632, 0.1195)	-8.89 (-9.8725, -7.9038)
South Sudan	0.29 (0.2555, 0.3226)	0.70 (0.6982, 0.7097)
Spain	4.73 (3.7322, 5.7412)	-0.60 (-0.6091, -0.6006)
Sri Lanka	0.39 (-0.0914, 0.8826)	0.14 (0.1433, 0.1438)
Sudan	1.77 (1.2509, 2.2993)	1.19 (1.1767, 1.2097)
Suriname	-0.03 (-0.0461, -0.0176)	0.00 (0.0039, 0.0039)
Sweden	-0.04 (-0.0687, -0.0175)	-0.31 (-0.3105, -0.3083)
Switzerland	0.16 (0.0220, 0.2932)	-0.64 (-0.6489, -0.6393)
Syrian Arab Republic	2.55 (1.9630, 3.1406)	-1.78 (-1.8169, -1.7432)
Taiwan (Province of China)	-0.07 (-0.1146, -0.0340)	-0.86 (-0.8637, -0.8467)
Tajikistan	-2.63 (-3.0699, -2.1800)	1.31 (1.2903, 1.3301)
Thailand	0.53 (0.0710, 0.9947)	0.88 (0.8690, 0.8869)
Timor-Leste	-0.42 (-1.0096, 0.1689)	1.31 (1.2934, 1.3334)
Togo	2.66 (1.7619, 3.5592)	7.18 (6.5610, 7.8017)
Tokelau	-0.13 (-0.1442, -0.1093)	-0.62 (-0.6220, -0.6132)
Tonga	-0.10 (-0.1153, -0.0766)	-0.66 (-0.6646, -0.6545)
Trinidad and Tobago	0.55 (0.2517, 0.8540)	-0.14 (-0.1426, -0.1421)
Tunisia	2.25 (1.9881, 2.5087)	-0.82 (-0.8257, -0.8102)
Turkmenistan	0.26 (0.2198, 0.3066)	-0.35 (-0.3484, -0.3456)
Tuvalu	-0.08 (-0.0959, -0.0551)	-0.67 (-0.6708, -0.6606)
Uganda	-5.02 (-5.3870, -4.6503)	-0.23 (-0.2318, -0.2306)

Ukraine	1.80 (1.2015, 2.4012)	0.62 (0.6146, 0.6235)
United Arab Emirates	-0.09 (-0.1078, -0.0778)	-0.07 (-0.0680, -0.0679)
United Kingdom	-0.09 (-0.2731, 0.0897)	-0.42 (-0.4267, -0.4226)
United Republic of Tanzania	-2.12 (-2.2762, -1.9590)	-0.42 (-0.4238, -0.4197)
United States of America	3.19 (1.6281, 4.7777)	-2.76 (-2.8484, -2.6707)
United States Virgin Islands	0.12 (0.1017, 0.1373)	-0.33 (-0.3319, -0.3293)
Uruguay	-0.19 (-0.2789, -0.0920)	1.13 (1.1198, 1.1497)
Uzbekistan	1.89 (1.2571, 2.5257)	-0.57 (-0.5783, -0.5707)
Vanuatu	-0.14 (-0.1649, -0.1229)	-0.11 (-0.1098, -0.1095)
Venezuela (Bolivarian Republic of)	0.12 (0.0681, 0.1661)	0.08 (0.0753, 0.0754)
Viet Nam	2.01 (1.1046, 2.9154)	-1.48 (-1.5033, -1.4525)
Yemen	0.34 (-0.4634, 1.1487)	0.63 (0.6257, 0.6350)
Zambia	-3.30 (-4.5766, -2.0098)	8.28 (7.4512, 9.1245)
Zimbabwe	-1.48 (-2.4423, -0.5050)	8.46 (7.5872, 9.3351)

Supplementary Table S7. Top and Bottom 10 countries of the projected EAPC of age-standardized rates of Female Infertility from 2022 to 2040.

Top		
Rank	DALYs (Disability-Adjusted Life Years) Country	DALYs (Disability-Adjusted Life Years) Value
1	Kenya	9.09 (8.0746, 10.1097)
2	Chad	9.03 (8.0322, 10.0409)
3	Peru	9.02 (8.0227, 10.0256)
4	Guatemala	8.63 (7.7231, 9.5476)
5	Lesotho	8.60 (7.6998, 9.5111)
6	Zimbabwe	8.46 (7.5872, 9.3351)
7	Rwanda	8.45 (7.5789, 9.3221)
8	Zambia	8.28 (7.4512, 9.1245)
9	Ghana	8.18 (7.3654, 8.9930)
10	Cambodia	8.14 (7.3371, 8.9497)
Bottom		
Rank	DALYs (Disability-Adjusted Life Years) Country	DALYs (Disability-Adjusted Life Years) Value
1	Mali	-13.17 (-15.5783, -10.6990)
2	South Africa	-8.89 (-9.8725, -7.9038)
3	Nicaragua	-3.96 (-4.1444, -3.7762)
4	Ecuador	-3.41 (-3.5423, -3.2708)
5	Papua New Guinea	-2.94 (-3.0425, -2.8405)
6	Morocco	-2.79 (-2.8825, -2.7007)
7	United States of America	-2.76 (-2.8484, -2.6707)
8	Benin	-2.39 (-2.4614, -2.3278)
9	New Zealand	-2.27 (-2.3247, -2.2053)
10	Syrian Arab Republic	-1.78 (-1.8169, -1.7432)

Supplementary Table S8. Top and Bottom 10 countries of the projected age-standardized rates of Female Infertility in 2040.

Top		
Rank	DALYs (Disability-Adjusted Life Years) Country	DALYs (Disability-Adjusted Life Years) Value
1	Lesotho	55.86 (43.99, 67.74)
2	Kenya	53.87 (42.94, 64.79)
3	Cambodia	40.65 (33.16, 48.13)
4	Ghana	36.28 (29.02, 43.53)
5	Zambia	36.18 (29.40, 42.96)
6	Chad	33.70 (24.90, 42.50)
7	Democratic Republic of the Congo	33.44 (25.96, 40.91)
8	Central African Republic	33.32 (31.09, 35.54)
9	Gabon	30.29 (25.88, 34.70)
10	Pakistan	29.96 (16.64, 43.27)
Bottom		
Rank	DALYs (Disability-Adjusted Life Years) Country	DALYs (Disability-Adjusted Life Years) Value
1	Australia	0.66 (0.61, 0.71)
2	Colombia	1.43 (1.13, 1.72)
3	New Zealand	1.44 (1.11, 1.76)
4	Ecuador	1.51 (1.00, 2.02)
5	Malawi	1.90 (1.22, 2.57)
6	Burundi	2.03 (1.07, 2.99)
7	Denmark	2.17 (1.65, 2.68)
8	Brunei Darussalam	2.61 (2.27, 2.95)
9	Canada	2.63 (2.57, 2.69)
10	Uganda	2.65 (1.78, 3.52)