

Supplementary Material

***Elachanthus*, *Isoetopsis* and *Kippistia* are nested in the genus *Minuria* (Asteraceae: Astereae)**

Alexander N. Schmidt-Lebuhn^{A,*}, *Stephanie H. Chen*^A and *Alicia Grealyn*^A

^ACentre for Australian National Biodiversity Research (a joint venture between Parks Australia and CSIRO), Clunies Ross Street, Canberra, ACT 2601, Australia

*Correspondence to: Email: alexander.s-l@csiro.au

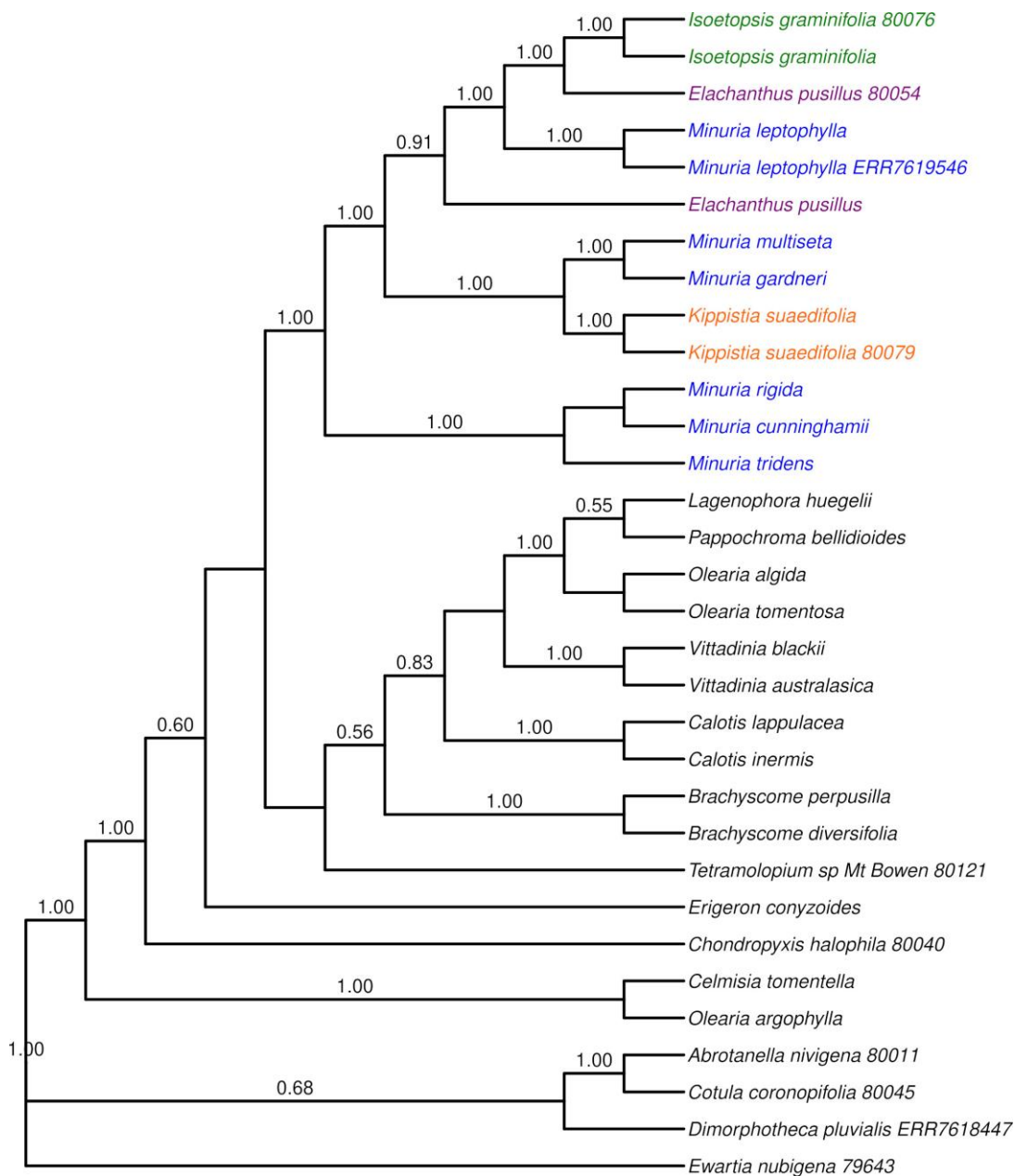


Figure S1. ASTRAL-PRO phylogeny of selected Australian Astereae showing *Elachanthus* (lilac), *Isoetopsis* (green) and *Kippistia* (orange) as nested in *Minuria* sens. str. (blue), based on sequence capture data of protein coding genes. Support values are branch local posterior probabilities. Five-digit identifiers are sample names in the BioPlatforms Australia data portal. ERR7618447 and ERR7619546 are accession numbers of the Sequence Read Archive for samples sequenced by the Plant and Fungal Tree of Life project. Samples without identifiers are those newly sequenced for this study, see Appendix 1 for voucher information.