

[10.1071/MF23164](https://doi.org/10.1071/MF23164)

*Marine and Freshwater Research*

### Supplementary Material

#### **Spatial and temporal habitat use of humpback whales (*Megaptera novaeangliae*) in relation to vessel traffic in the Gold Coast Bay, Australia**

*Jana Djukarić<sup>A,B</sup>, and Jan-Olaf Meynecke<sup>B,C,D,\*</sup>*

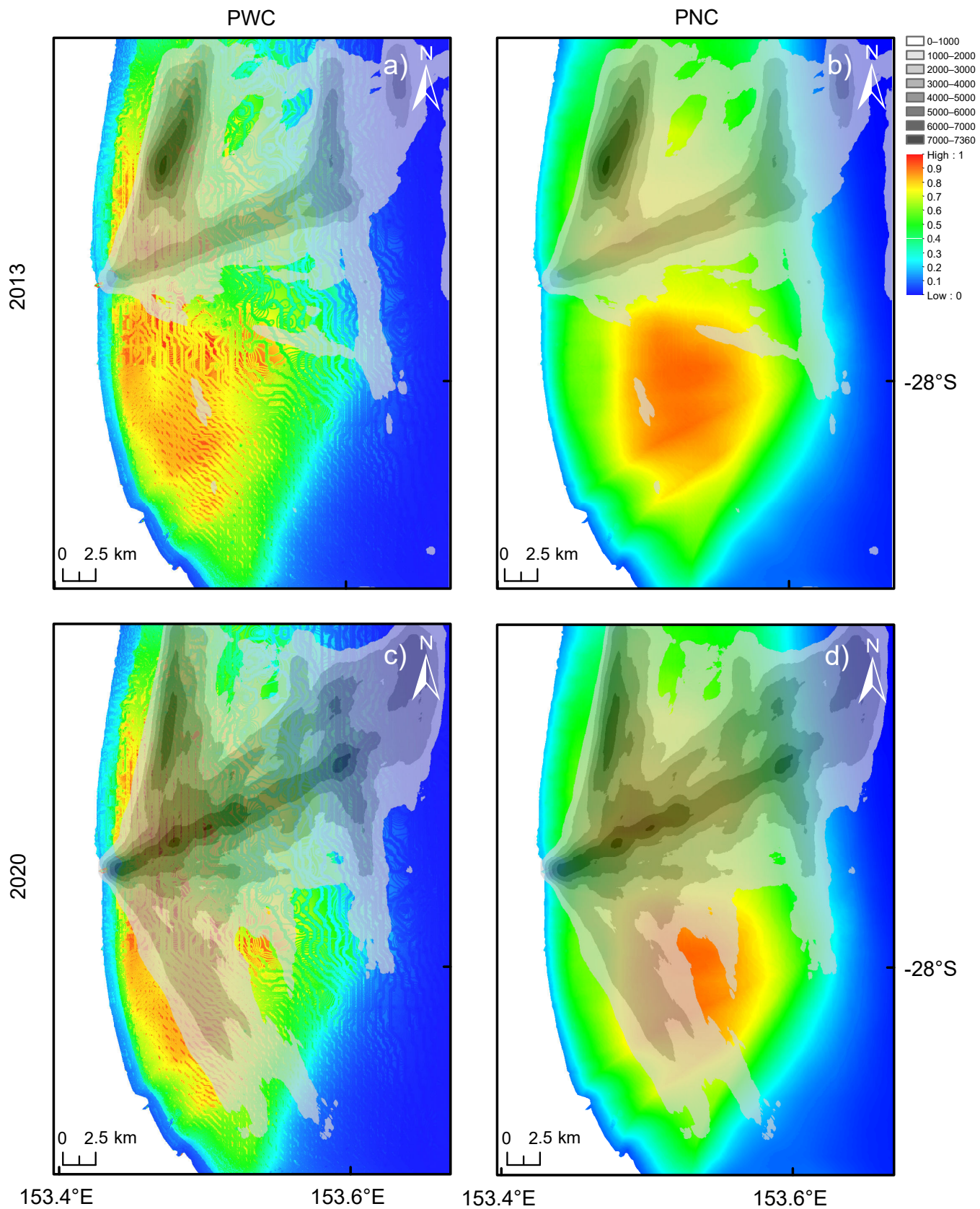
<sup>A</sup> Department of Ecology, Environment and Plant Sciences, Stockholm University, Svante-Arrhenius väg 20A, SE-11418 Stockholm, Sweden.

<sup>B</sup> Whales and Climate Research Program, Griffith University, Qld 4222, Australia.

<sup>C</sup> Coastal and Marine Research Centre, Griffith University, Qld 4222, Australia.

<sup>D</sup> Humpbacks & High-Rises Inc, Gold Coast, Qld 4222, Australia.

\*Correspondence to: Jan-Olaf Meynecke Whales and Climate Research Program, Griffith University, Qld 4222, Australia Email: [o.meynecke@griffith.edu.au](mailto:o.meynecke@griffith.edu.au)



**Fig. S1.** Overlay of habitat suitability and line density from shipping lines for June to October 2013 (a) for PWC and (b) PNC and in 2020 for (c) PWC and (d) PNC.