

[10.1071/FP24208](https://doi.org/10.1071/FP24208)

Functional Plant Biology

Supplementary Material

Artemin molecular chaperone from *Artemia urmiana* improves tolerance of *Arabidopsis thaliana* to abiotic stress

Tayebe Fallahi-Pashaki^A, Reza Shirzadian-Khoramabad^A, and M. Mehdi Sohani^{A,}*

^A Department of Plant Biotechnology, College of Agricultural Sciences, University of Guilan, Khalij Fars Highway, Rasht 4199613769, Iran. Email: t.fallahei@yahoo.com

*Correspondence to: M. Mehdi Sohani Department of Plant Biotechnology, College of Agricultural Sciences, University of Guilan, Khalij Fars Highway, Rasht 4199613769, Iran Email: msohani@guilan.ac.ir

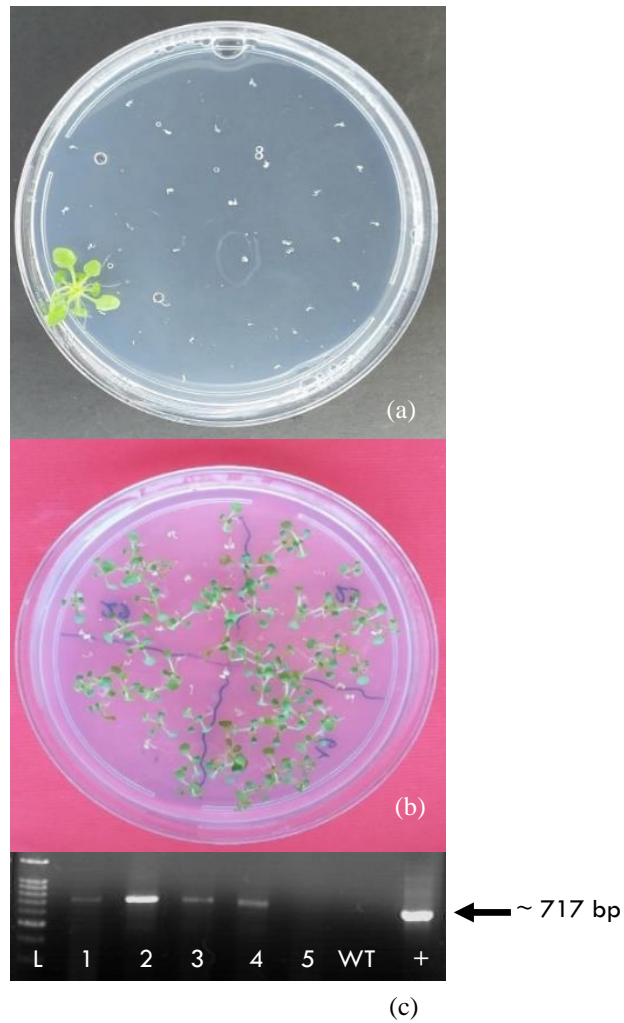


Fig. S1 Recovery of putative transgenic lines (T_1) on selective medium (a); Analysis of segregation ratio of T_2 seedlings on selective medium (b) and PCR amplification (717 bp) of the artemin gene (c): 1-5: putative transgenic lines; WT: non-transgenic plant as a negative control; +: plasmid with *ART* gene; L: DNA marker.