

Supplementary Material

Trajectories of hospital service use in the last 12 months of life by people with chronic kidney disease: a retrospective cohort study

Tolesa Okuba^{A,*} (PhD, Postdoc Research Fellow), *Zhisheng Sa*^{A,B} (MSc, NSW Biostatistics Trainee), *Tim Badgery-Parker*^A (PhD, Research Fellow), *Janet C. Long*^A (PhD, Senior Research Fellow), *Jeffrey Braithwaite*^A (PhD, Professor), *Angela Makris*^C (MSc, Director of Renal Medicine), *Annie Hutton*^D (MSc, Manager of Renal Network), *Jean-Frederic Levesque*^{D,E} (PhD, Chief Executive Officer), *Diane E. Watson*^F (PhD, Chief Executive Officer), *Johanna I. Westbrook*^A (PhD, Professor) and *Rebecca Mitchell*^A (PhD, Professor)

^AAustralian Institute of Health Innovation, Macquarie University, NSW, Australia

^BNSW Biostatistics Training Program, NSW Ministry of Health, NSW, Australia

^CSouth Western Sydney Local Health District, NSW, Australia

^DAgency for Clinical Innovation, St Leonards, NSW, Australia

^ECentre for Primary Health Care and Equity, University of New South Wales, NSW, Australia

^FBureau of Health Information, NSW, Australia

*Correspondence to: Email: tolesa.okuba@mq.edu.au

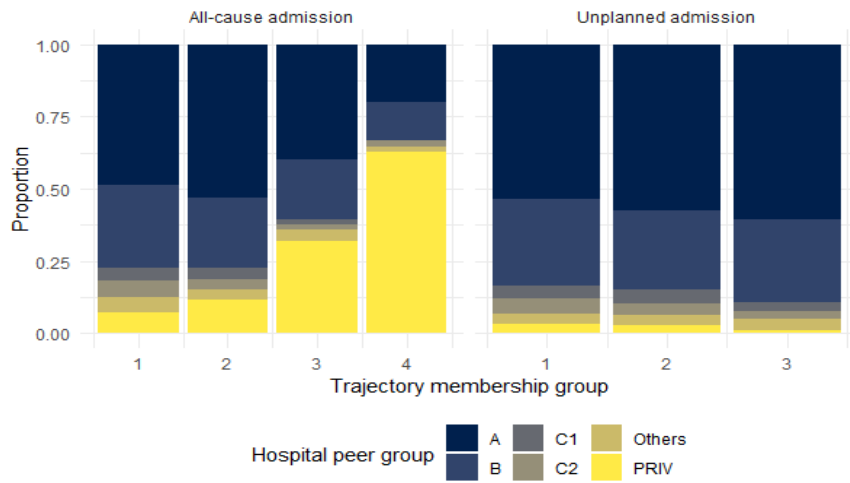


Fig. S1. Proportion of admissions by type of admission, trajectory membership group and hospital peer-group. A: Principal or tertiary referral; B: Major; C1: District group 1; C2: District group 2; Others: Others; PRIV: Private facilities.