

Supplementary Material

Forest fire progress monitoring using dual-polarisation Synthetic Aperture Radar (SAR) images combined with multi-scale segmentation and unsupervised classification

Age Shama^A, Rui Zhang^{A,}, Ting Wang^A, Anmengyun Liu^A, Xin Bao^A, Jichao Lv^A, Yuchun Zhang^A and Guoxiang Liu^A*

^AFaculty of Geosciences and Environmental Engineering, Southwest Jiaotong University, Chengdu, 611756, China

*Correspondence to: Email: zhangrui@swjtu.edu.cn

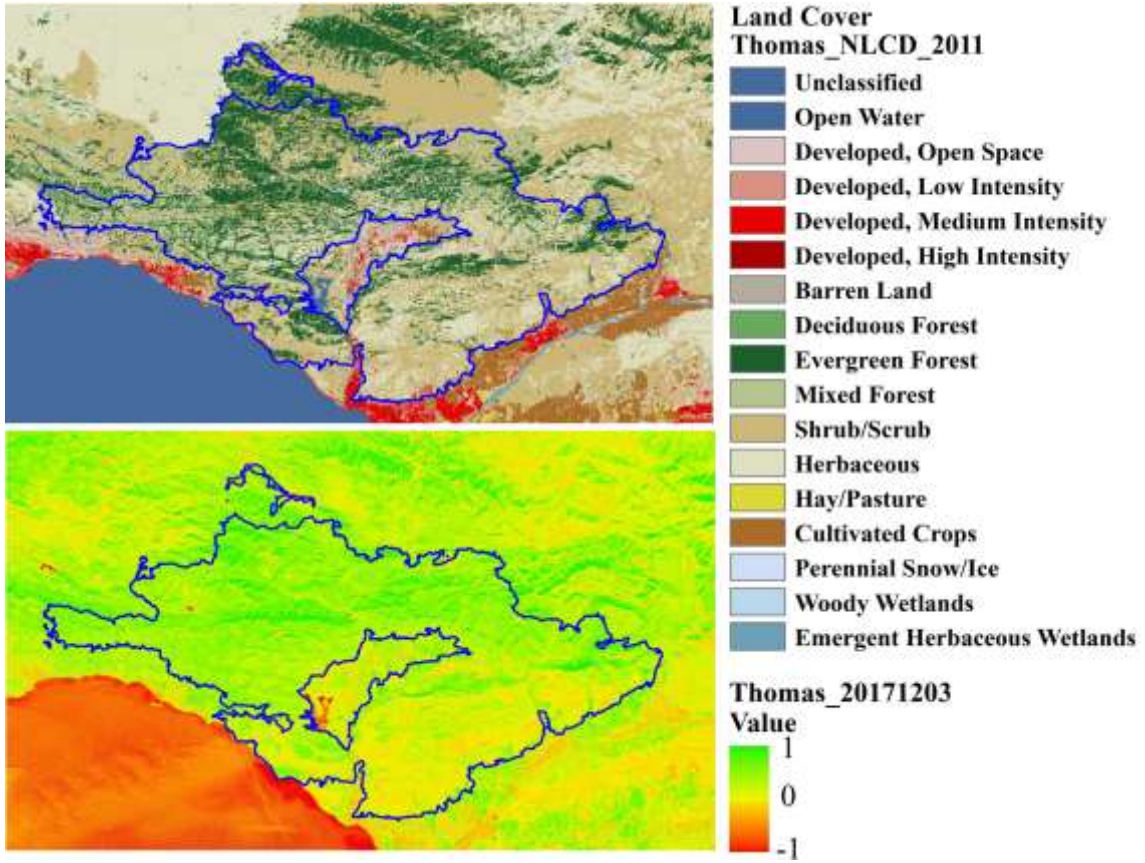
Supplementary Material

Supplementary Table S1. Sentinel-1 data parameters

Number	Acquisition date	Polarization mode	Orbital direction	Pixel spacing (Azimuth \times Range) (m)
1	2017-11-22	VV+VH	Ascending	13.941 \times 2.329
2	2017-11-28	VV+VH	Descending	13.941 \times 2.329
3	2017-12-10	VV+VH	Descending	13.941 \times 2.329
4	2017-12-16	VV+VH	Ascending	13.941 \times 2.329
5	2018-01-15	VV+VH	Descending	13.941 \times 2.329

Supplementary Table S2. Feature parameter information based on polarized SAR images construction

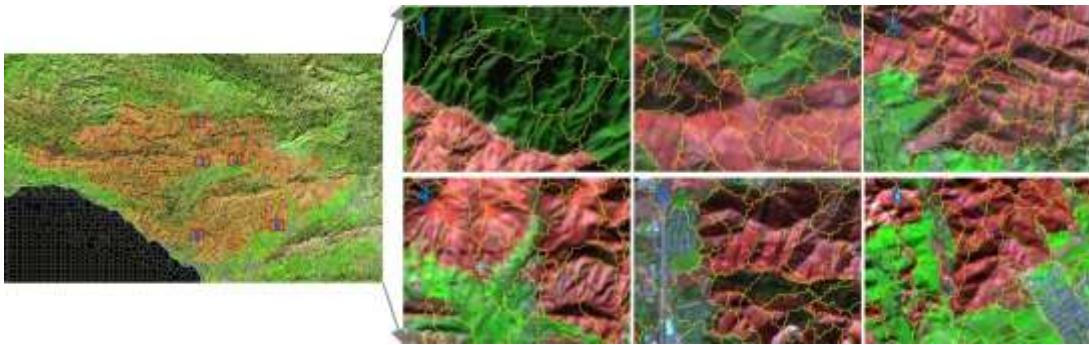
Feature types	Feature names	Meaning of features
scattering intensity	BBR _{gamma}	backscatter burn ratio of the gamma value
	BBR _{sigma}	backscatter burn ratio of the sigma value
scattering mechanism	D _{alpha}	the polarization burn difference constructed using scattering angle
	D _{entropy}	the polarization burn difference constructed using entropy
	D _{anisotropy}	the polarization burn difference constructed using anisotropy
	P _{mean}	texture feature change parameters calculated with mean
	P _{variance}	texture feature change parameters calculated with variance
texture features	P _{dissimilarity}	texture feature change parameters calculated with dissimilarity
	P _{ASM}	texture feature change parameters calculated with angular second moment
	P _{entropy}	texture feature change parameters calculated with information entropy
	P _{correlation}	texture feature change parameters calculated with correlation
	P _{homogeneity}	texture feature change parameters calculated with homogeneity
	P _{contrast}	texture feature change parameters calculated with contrast



8

9

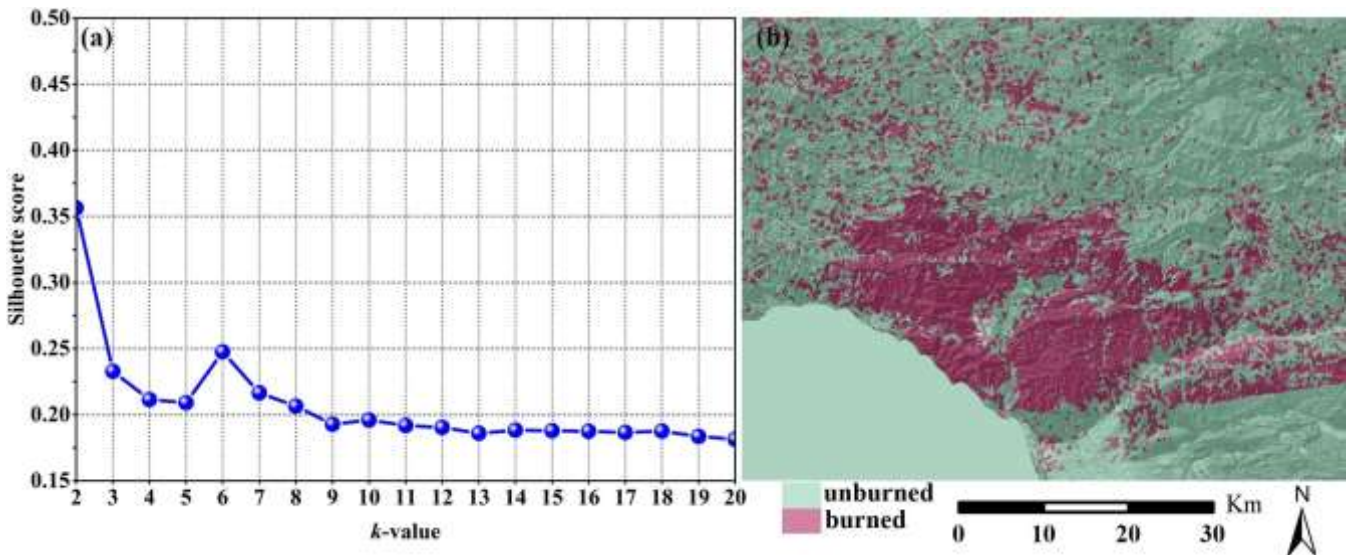
Supplementary Fig. S1. Land cover map and NDVI map on the Thomas Fire.



10

11

Supplementary Fig. S2. Multi-scale segmentation results



12

13

Supplementary Fig. S3. (a)Silhouette score values; (b) Map of burned area extraction results when K=2.