

10.1071/SH16122\_AC

© 2016 CSIRO

Sexual Health 2016; 13: 589–592

### Seasonal variation in gonorrhoea incidence among men who have sex with men

*Bin Li<sup>A,B</sup>, Peng Bi<sup>A</sup>, Eric P. F. Chow<sup>C,D</sup>, Basil Donovan<sup>E,F</sup>, Anna McNulty<sup>F</sup>, Alison Ward<sup>B</sup>, Charlotte Bell<sup>B</sup> and Christopher K. Fairley<sup>C,D,G</sup>*

<sup>A</sup>School of Public Health, The University of Adelaide, Adelaide, SA 5000, Australia.

<sup>B</sup>South Australia Specialist Sexual Health, Infectious Disease Unit, Royal Adelaide Hospital, Adelaide, SA 5000, Australia.

<sup>C</sup>Central Clinical School, Faculty of Medicine, Nursing and Health Sciences, Monash University, Melbourne, Vic. 3004, Australia.

<sup>D</sup>Melbourne Sexual Health Centre, Alfred Health, Melbourne, Vic. 3053, Australia.

<sup>E</sup>The Kirby Institute, UNSW Australia, Sydney, NSW 2052, Australia.

<sup>F</sup>Sydney Sexual Health Centre, Sydney Hospital, Sydney, NSW 2000, Australia.

<sup>G</sup>Corresponding author. Email: cfairley@mshc.org.au

**Table 1:** Number and proportion of peaks with urethral gonorrhoea in MSM diagnosed each quarter at the three clinics 1990-2013

	SASSH		MSHC		SSHC	
	n	%	n	%	n	%
Quarter†						
Q1	12	42.8	2	15.4	9	37.5
Q2	5	17.9	5	38.5	6	25.0
Q3	6	21.4	1	7.7	3	12.5

Q4	5	17.9	5	38.5	6	25.0
Season‡						
Summer	7	29.2	4	26.7	6	26.1
Autumn	5	20.8	6	40.0	5	21.7
Winter	8	33.3	2	13.3	8	34.8
Spring	4	16.7	3	20.0	4	17.4
Years	1990-2013		2002-2013		1995-2013	

† Fisher's exact  $P=0.409$  ‡ Fisher's exact  $P=0.773$

**Table 2:** Mean, median and inter-quartile range (IQR) for the number of urethral gonorrhoea in MSM diagnosed each quarter at the three clinics

	SASSH*			MSHC**			SSHC***		
	Mean	Median	IQR	Mean	Median	IQR	Mean	Median	IQR
Q1	13	12	5.0-19.5	26	25	15.5-34.5	21	22	14-29
Q2	10	9	3.0-11.5	28	25	15.5-36.5	19	17	12-24
Q3	9	6	3.5-11.5	22	20	12.0-26.5	18	15	9-23
Q4	10	8	3.0-17	28	26	17.5-35.5	18	19	11-23
Years	1990-2013			2002-2013			1995-2013		

\*:  $P=0.3895$  \*\*:  $0.6930$  \*\*\*:  $0.74$

Figure 1a: Proportion with Urethral gonorrhoea among MSM each month and compared with annual average at SASSH, 1990-2013

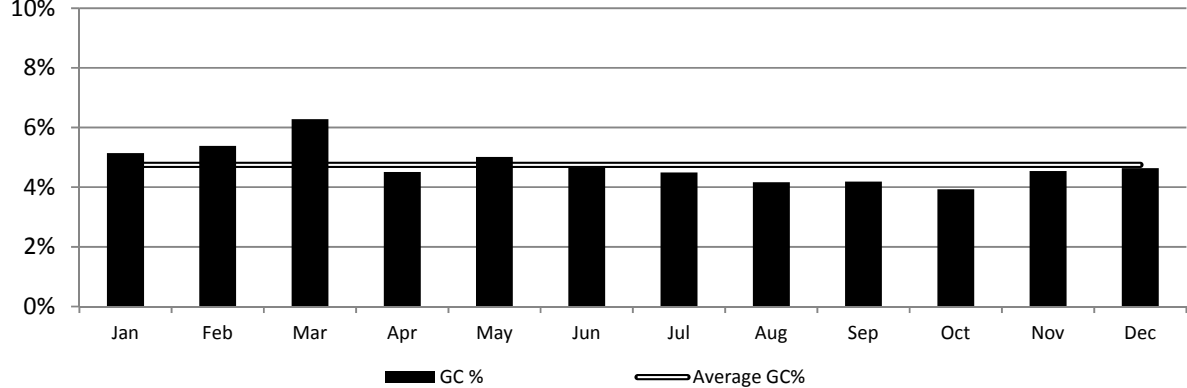


Figure 1b: Proportion with Urethral gonorrhoea among MSM each month and compared with annual average at MSHC, 2002-2013

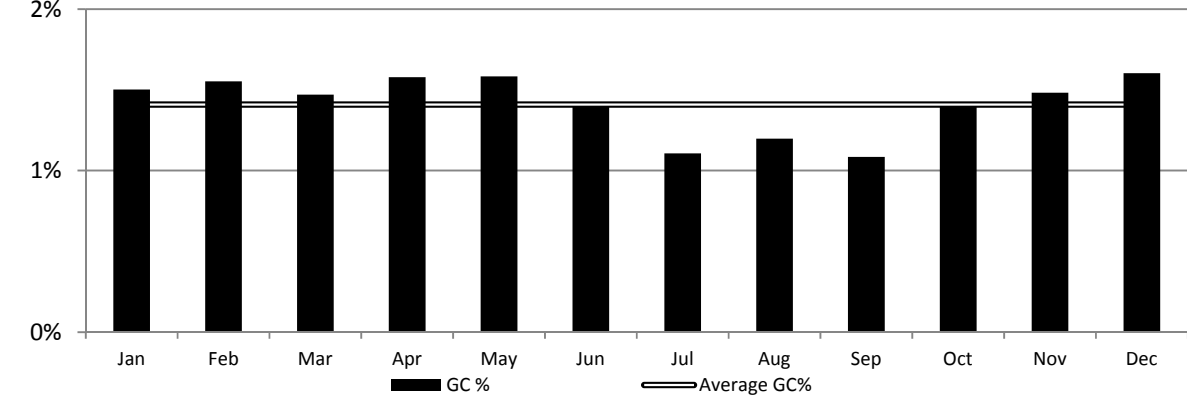


Figure 1c: Proportion with Urethral gonorrhoea among MSM each month and compared with annual average at SSHC, 1995-2013

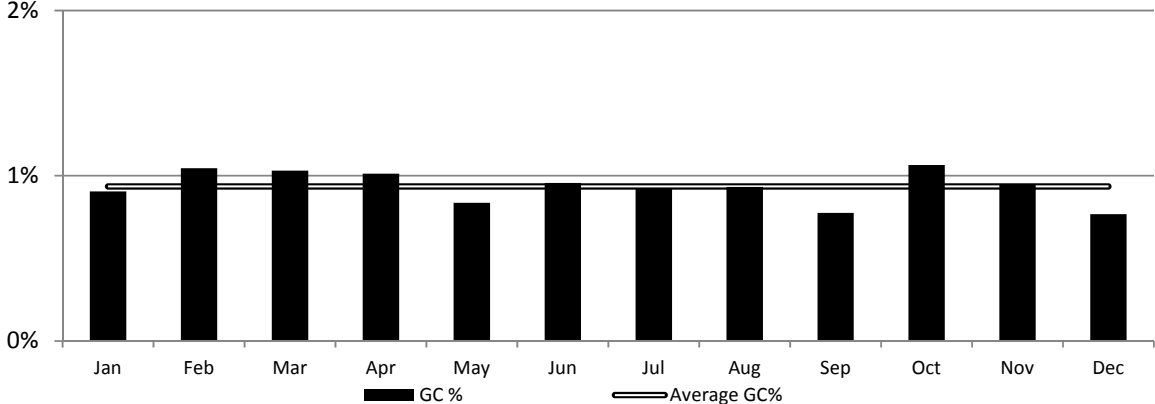


Figure 2: Proportion with urethral gonorrhoea in MSM at SASSH (1990-2013), Melbourne Sexual Health Centre (MSHC) (2002-13) and Sydney Sexual Health Centre (SSHC) (1995-2013)

