

Supplementary Material

Coupling of machine learning methods to improve estimation of ground coverage from unmanned aerial vehicle (UAV) imagery for high-throughput phenotyping of crops

Pengcheng Hu^A, Scott C. Chapman^{A,B} and Bangyou Zheng^{A,C}

^ACSIRO Agriculture and Food, Queensland Biosciences Precinct 306 Carmody Road, St Lucia 4067, Qld, Australia.

^BSchool of Food and Agricultural Sciences, The University of Queensland, via Warrego Highway, Gatton 4343, Qld, Australia.

^CCorresponding author. Email: bangyou.zheng@csiro.au

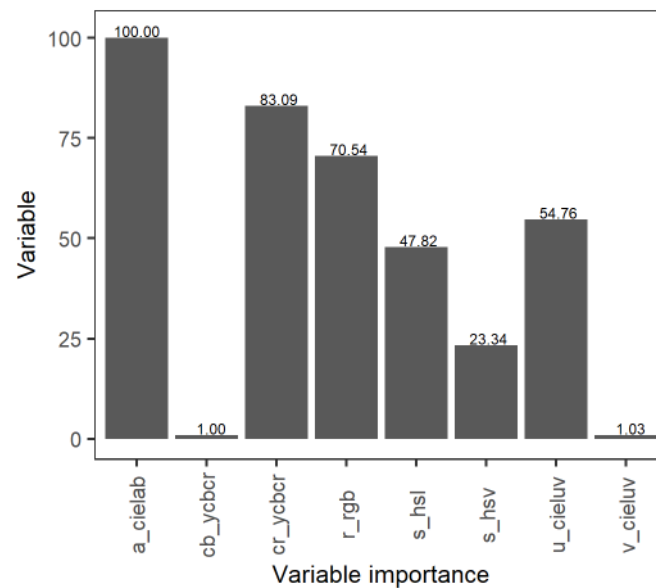


Fig. S1. Example of relative importance of colour features used to train a SPC model.

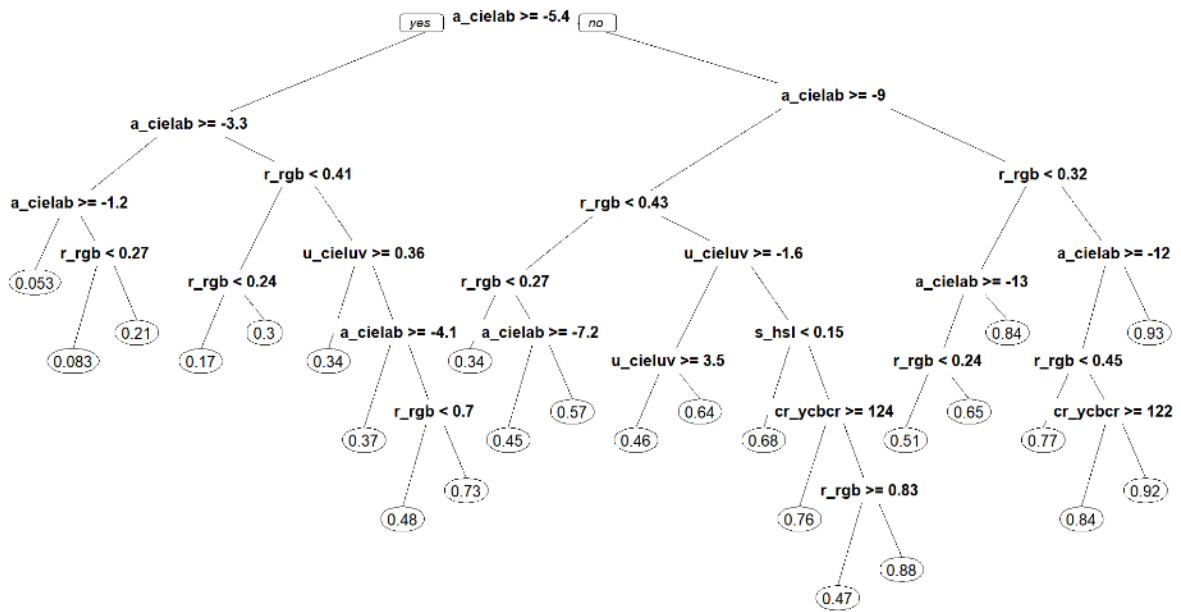


Fig. S2. Example of model visualization of a SPC model.