

**Supplementary Material**

**Untangling the complex mix of agronomic and economic uncertainties inherent in decisions on rainfed cotton**

*Sosheel S. Godfrey<sup>A,B,\*</sup>, Thomas L. Nordblom<sup>A,B</sup>, Muhuddin Rajin Anwar<sup>A,C</sup>, Ryan H. L. Ip<sup>D</sup>, David J. Lockett<sup>A</sup>, and Michael P. Bange<sup>E</sup>*

<sup>A</sup>Gulbali Institute (Agriculture, Water and Environment), Charles Sturt University, Locked Bag 588, Wagga Wagga, NSW 2678, Australia.

<sup>B</sup>School of Agricultural, Environmental and Veterinary Sciences, Charles Sturt University, Locked Bag 588, Wagga Wagga, NSW 2678, Australia.

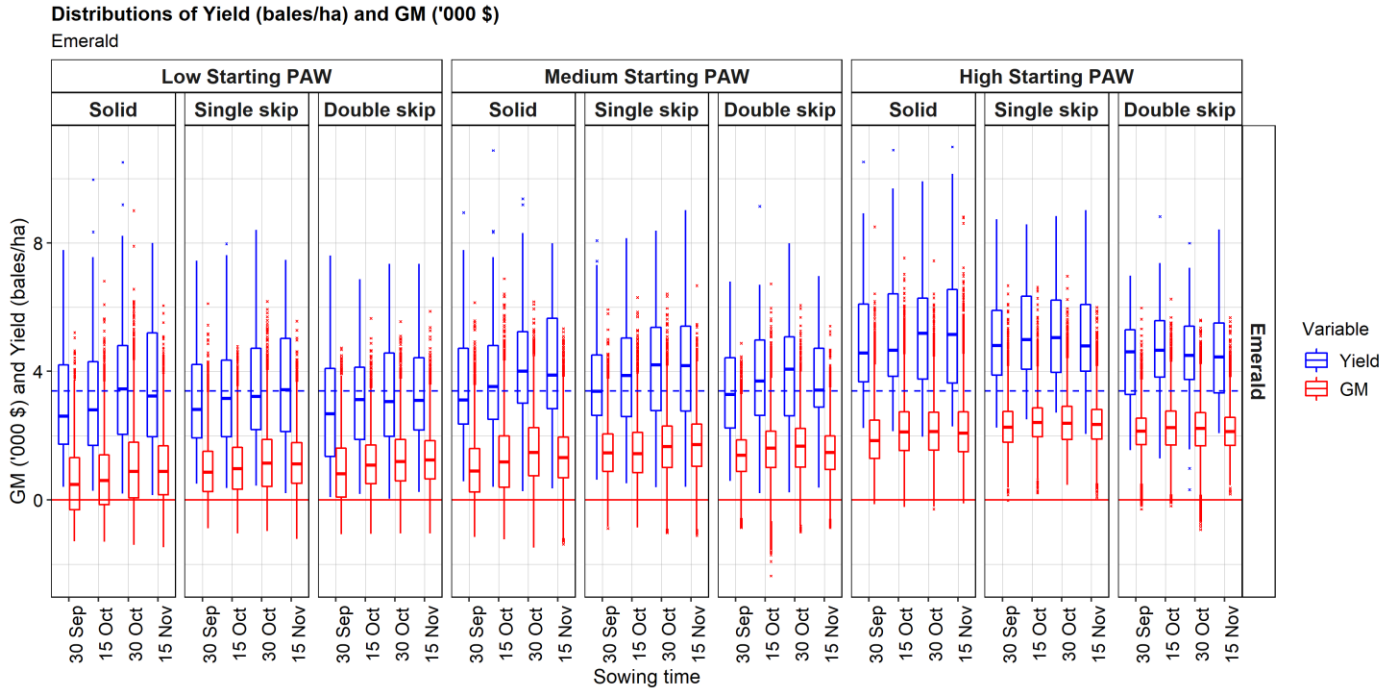
<sup>C</sup>NSW Department of Primary Industries, Wagga Wagga Agricultural Institute, PMB, Wagga Wagga, NSW 2650, Australia.

<sup>D</sup>School of Computing, Mathematics and Engineering, Charles Sturt University, Locked Bag 588, Wagga Wagga, NSW 2678, Australia.

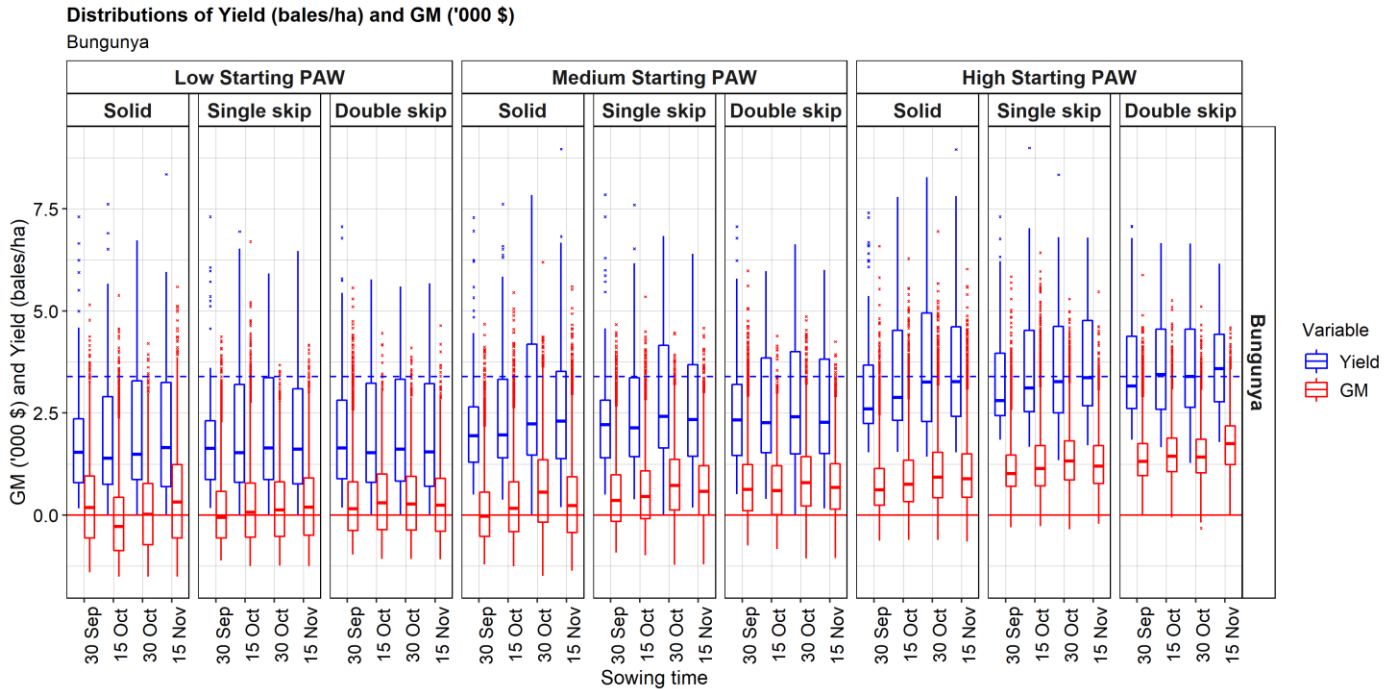
<sup>E</sup>Cotton Seed Distributors, formerly CSIRO Agriculture and Food, Australian Cotton Research Institute, Narrabri, NSW 2390, Australia.

\*Correspondence to: Sosheel S. Godfrey Gulbali Institute (Agriculture, Water and Environment), Charles Sturt University, Locked Bag 588, Wagga Wagga, NSW 2678, Australia Email: [sgodfrey@csu.edu.au](mailto:sgodfrey@csu.edu.au)

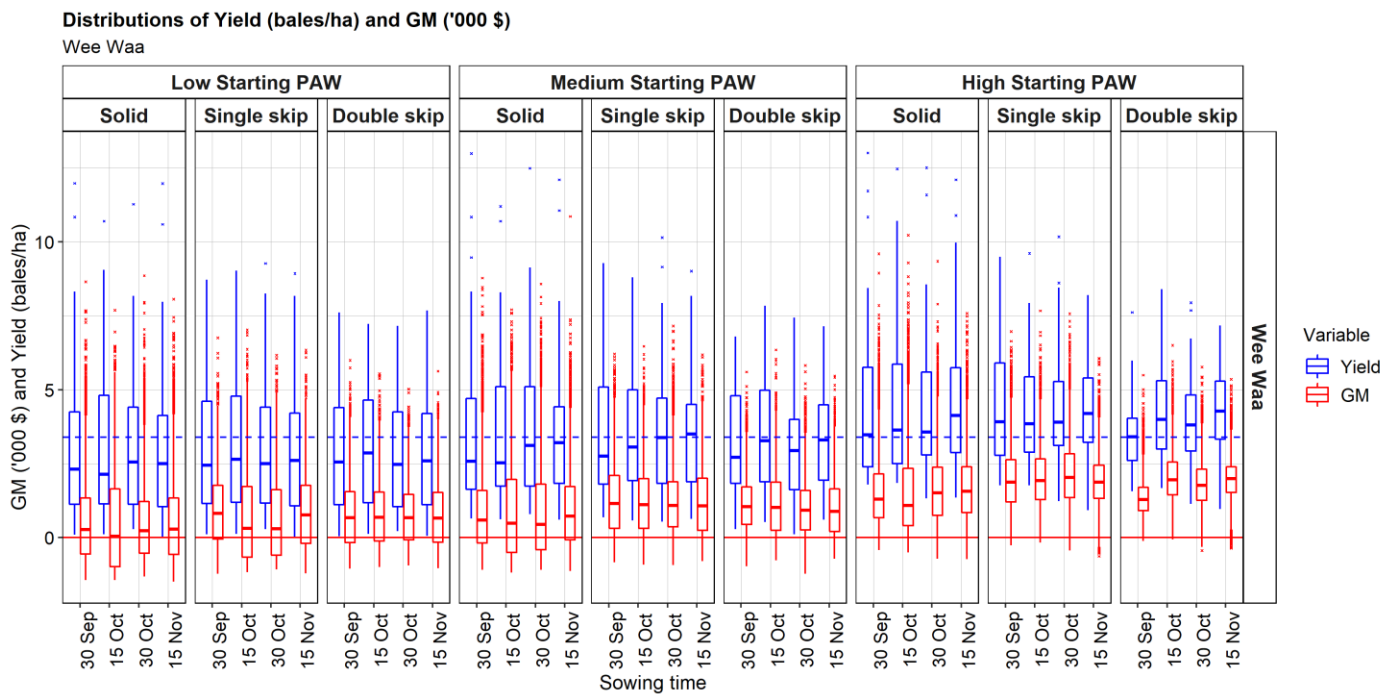
**Figure S1a, Emerald Gross Margins**



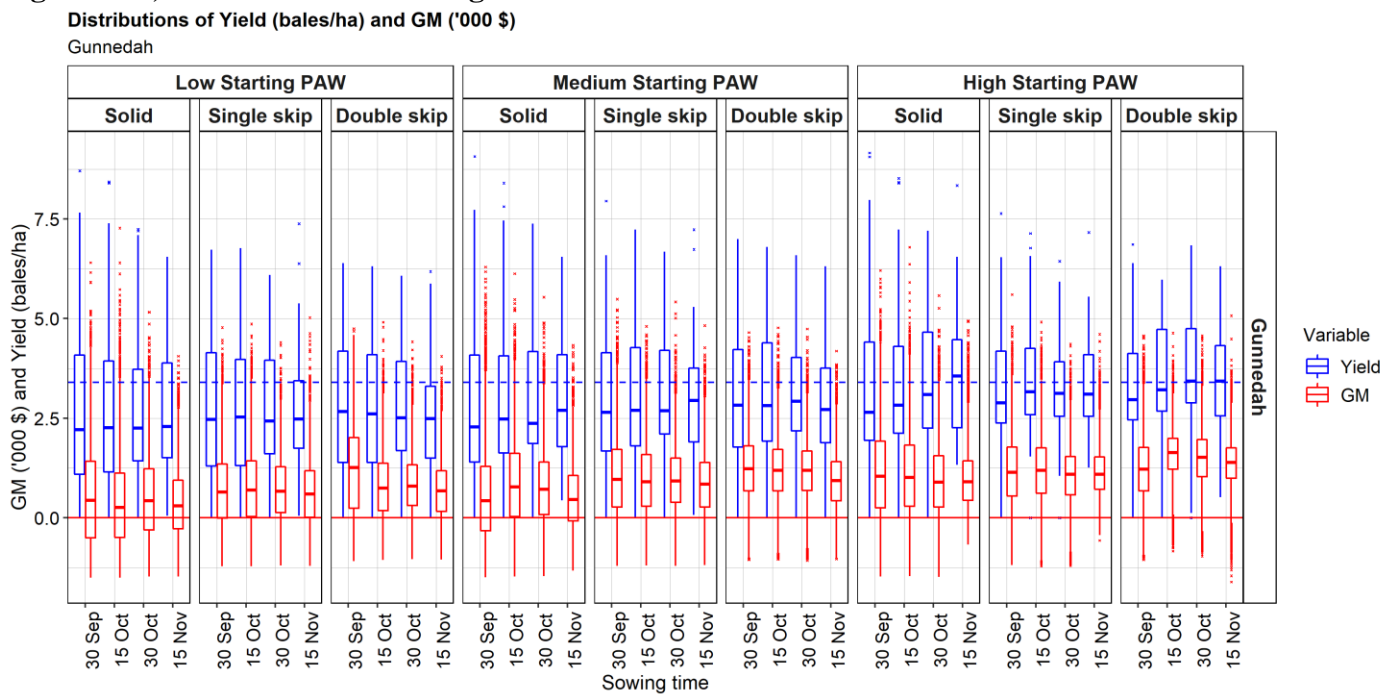
**Figure S1b, Bungunya Gross Margins**



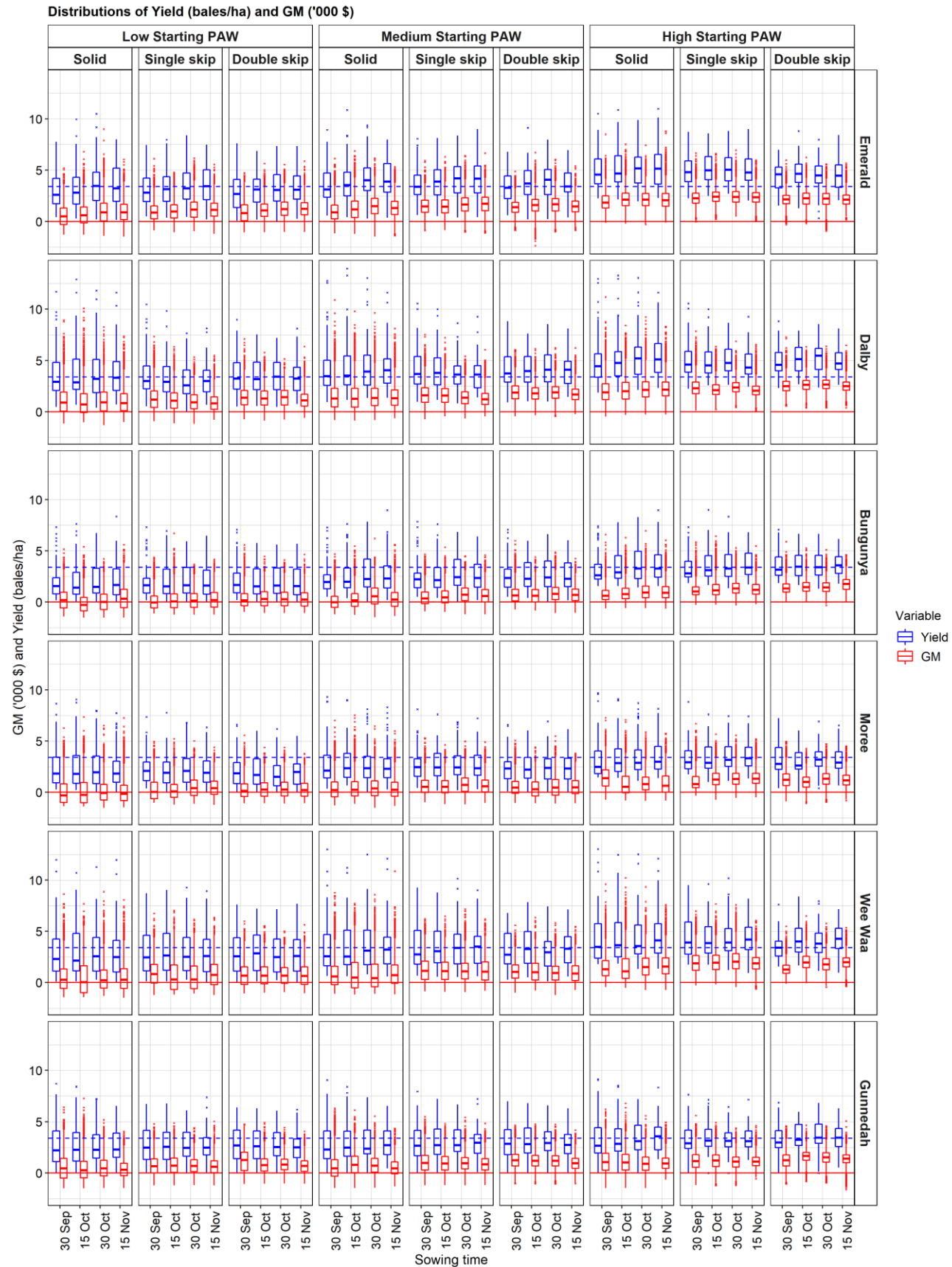
**Figure S1c, Wee Waa Gross Margins**



**Figure S1d, Gunnedah Gross Margins**



**Figure S1e, Gross Margins for all six locations**



**Figure S1.** Two boxplot distributions (a: Emerald; b: Bungunya; c: Wee Waa; d: Gunnedah and e: all six locations) are shown for each combination of PAW, row configuration and sowing date: the higher-left (blue) one represents rainfed cotton lint yields (bales/ha) relative to the dashed blue line at the overall mean (3.40 bales/ha) across all six sites and treatments; and lower-right (red) one represents gross margins (GM in thousand Australia dollars) relative to the solid red line at zero. In each boxplot the line in the middle of the boxes represents the median value for the data, the upper edge of the boxes the 75th percentile, and the lower edge the 25th percentile. The whiskers correspond to 1.5 times the inter-quartile range (IQR, difference between 75th and 25th percentiles) or to the most extreme observed value, whichever is smallest. Crosses above or below the whiskers represent individual values outside of this range.

**Table S1.** Summary statistics of GM under all 216 combinations (in ‘000 dollars per hectare or %).

Site	Starting PAW	Row Config.	Sowing Date	Mean	Rank	% Diff	Median	SD	IQR	1%	5%	10%	% Loss
Emerald	Low	Solid	30-Sep	0.562	36	-77.0	0.479	1.061	1.612	-1.109	-0.969	-0.798	34.4
Emerald	Low	Solid	15-Oct	0.696	35	-71.5	0.597	1.112	1.552	-1.167	-0.917	-0.690	29.8
Emerald	Low	Solid	30-Oct	0.987	30	-59.6	0.888	1.261	1.735	-1.222	-0.889	-0.602	23.7
Emerald	Low	Solid	15-Nov	0.952	32	-61.0	0.885	1.071	1.519	-1.141	-0.701	-0.398	20.0
Emerald	Low	Single	30-Sep	0.930	33	-61.9	0.853	0.928	1.257	-0.711	-0.451	-0.239	16.7
Emerald	Low	Single	15-Oct	1.013	29	-58.5	0.973	0.952	1.302	-0.804	-0.485	-0.221	15.4
Emerald	Low	Single	30-Oct	1.206	26	-50.6	1.138	1.069	1.463	-0.745	-0.421	-0.162	13.3
Emerald	Low	Single	15-Nov	1.156	27	-52.7	1.118	0.943	1.277	-0.840	-0.380	-0.064	11.2
Emerald	Low	Double	30-Sep	0.890	34	-63.6	0.809	1.012	1.532	-0.854	-0.576	-0.388	22.4
Emerald	Low	Double	15-Oct	1.115	28	-54.4	1.078	0.880	1.207	-0.720	-0.305	-0.015	10.3
Emerald	Low	Double	30-Oct	1.246	24	-49.0	1.194	0.948	1.285	-0.713	-0.257	0.046	9.2
Emerald	Low	Double	15-Nov	1.255	23	-48.6	1.238	0.902	1.195	-0.696	-0.230	0.093	8.3
Emerald	Medium	Solid	30-Sep	0.959	31	-60.7	0.894	0.983	1.349	-0.842	-0.540	-0.286	17.5
Emerald	Medium	Solid	15-Oct	1.231	25	-49.6	1.176	1.161	1.596	-0.959	-0.576	-0.262	15.3
Emerald	Medium	Solid	30-Oct	1.494	17	-38.8	1.476	1.117	1.494	-0.974	-0.375	0.038	9.5
Emerald	Medium	Solid	15-Nov	1.319	22	-46.0	1.317	0.986	1.275	-0.919	-0.357	0.030	9.6
Emerald	Medium	Single	30-Sep	1.474	19	-39.7	1.459	0.893	1.175	-0.488	-0.008	0.335	5.1
Emerald	Medium	Single	15-Oct	1.477	18	-39.5	1.438	0.934	1.253	-0.527	-0.052	0.293	5.7
Emerald	Medium	Single	30-Oct	1.646	14	-32.6	1.653	0.994	1.288	-0.606	-0.059	0.347	5.6
Emerald	Medium	Single	15-Nov	1.690	13	-30.8	1.722	0.996	1.323	-0.584	-0.022	0.354	5.3
Emerald	Medium	Double	30-Sep	1.363	21	-44.2	1.385	0.785	0.982	-0.499	-0.010	0.320	5.2
Emerald	Medium	Double	15-Oct	1.568	16	-35.8	1.603	0.932	1.131	-0.782	-0.033	0.383	5.4
Emerald	Medium	Double	30-Oct	1.624	15	-33.5	1.671	0.922	1.209	-0.517	0.033	0.381	4.7
Emerald	Medium	Double	15-Nov	1.452	20	-40.6	1.472	0.824	1.041	-0.482	0.011	0.360	4.9
Emerald	High	Solid	30-Sep	1.956	12	-19.9	1.840	0.910	1.187	0.409	0.716	0.893	0.1
Emerald	High	Solid	15-Oct	2.191	6	-10.3	2.117	0.933	1.215	0.490	0.824	1.058	0.1
Emerald	High	Solid	30-Oct	2.167	9	-11.3	2.121	0.906	1.181	0.369	0.742	1.024	0.1
Emerald	High	Solid	15-Nov	2.185	7	-10.6	2.076	0.957	1.235	0.540	0.844	1.052	0.0
Emerald	High	Single	30-Sep	2.306	4	-5.6	2.257	0.765	0.968	0.721	1.122	1.366	0.0
Emerald	High	Single	15-Oct	2.443	1	0.0	2.401	0.714	0.891	0.958	1.348	1.579	0.0
Emerald	High	Single	30-Oct	2.439	2	-0.2	2.378	0.762	1.028	1.009	1.346	1.508	0.0
Emerald	High	Single	15-Nov	2.369	3	-3.0	2.345	0.739	0.929	0.775	1.176	1.441	0.0
Emerald	High	Double	30-Sep	2.104	11	-13.9	2.141	0.697	0.832	0.308	0.830	1.180	0.1
Emerald	High	Double	15-Oct	2.235	5	-8.5	2.248	0.809	1.051	0.365	0.866	1.175	0.1
Emerald	High	Double	30-Oct	2.168	8	-11.3	2.225	0.839	1.034	-0.036	0.644	1.058	1.1
Emerald	High	Double	15-Nov	2.159	10	-11.6	2.119	0.672	0.866	0.814	1.138	1.330	0.0
Dalby	Low	Solid	30-Sep	1.092	31	-59.2	0.890	1.392	1.875	-1.016	-0.785	-0.551	24.1
Dalby	Low	Solid	15-Oct	0.993	34	-62.9	0.701	1.428	1.849	-0.851	-0.722	-0.569	28.0
Dalby	Low	Solid	30-Oct	1.081	32	-59.6	0.927	1.332	1.839	-1.072	-0.808	-0.544	23.2
Dalby	Low	Solid	15-Nov	1.026	33	-61.7	0.844	1.220	1.657	-0.811	-0.612	-0.416	22.0
Dalby	Low	Single	30-Sep	1.294	28	-51.6	1.178	1.159	1.585	-0.661	-0.388	-0.142	13.4
Dalby	Low	Single	15-Oct	1.129	30	-57.8	1.065	1.105	1.515	-0.906	-0.570	-0.283	16.5
Dalby	Low	Single	30-Oct	0.988	35	-63.1	0.927	0.955	1.347	-0.904	-0.497	-0.226	15.3
Dalby	Low	Single	15-Nov	0.906	36	-66.1	0.803	0.891	1.199	-0.562	-0.355	-0.173	15.6
Dalby	Low	Double	30-Sep	1.424	23	-46.8	1.366	1.037	1.409	-0.503	-0.176	0.099	7.9
Dalby	Low	Double	15-Oct	1.356	26	-49.3	1.291	0.955	1.357	-0.537	-0.125	0.165	7.1

Site	Starting PAW	Row Config.	Sowing Date	Mean	Rank	% Diff	Median	SD	IQR	1%	5%	10%	% Loss
Dalby	Low	Double	30-Oct	1.374	25	-48.7	1.425	0.978	1.442	-0.567	-0.276	0.003	9.9
Dalby	Low	Double	15-Nov	1.180	29	-55.9	1.105	0.860	1.159	-0.323	-0.092	0.116	7.2
Dalby	Medium	Solid	30-Sep	1.484	21	-44.5	1.295	1.338	1.818	-0.581	-0.333	-0.104	12.5
Dalby	Medium	Solid	15-Oct	1.503	20	-43.8	1.250	1.384	1.837	-0.445	-0.253	-0.066	12.1
Dalby	Medium	Solid	30-Oct	1.571	19	-41.3	1.342	1.286	1.703	-0.292	-0.078	0.118	6.8
Dalby	Medium	Solid	15-Nov	1.476	22	-44.8	1.308	1.155	1.517	-0.264	-0.054	0.139	6.3
Dalby	Medium	Single	30-Sep	1.679	17	-37.3	1.596	1.074	1.441	-0.251	0.067	0.331	4.1
Dalby	Medium	Single	15-Oct	1.651	18	-38.3	1.562	1.001	1.333	-0.130	0.167	0.421	2.5
Dalby	Medium	Single	30-Oct	1.393	24	-47.9	1.363	0.857	1.150	-0.333	0.016	0.295	4.7
Dalby	Medium	Single	15-Nov	1.319	27	-50.7	1.206	0.829	1.078	-0.008	0.204	0.363	1.1
Dalby	Medium	Double	30-Sep	1.906	13	-28.8	1.857	0.945	1.268	-0.046	0.408	0.714	1.3
Dalby	Medium	Double	15-Oct	1.806	15	-32.5	1.774	0.850	1.102	-0.018	0.437	0.725	1.2
Dalby	Medium	Double	30-Oct	1.885	14	-29.6	1.900	0.851	1.123	0.018	0.470	0.767	0.9
Dalby	Medium	Double	15-Nov	1.730	16	-35.4	1.681	0.770	1.020	0.257	0.554	0.762	0.1
Dalby	High	Solid	30-Sep	2.064	12	-22.9	1.889	1.203	1.575	0.172	0.463	0.680	0.3
Dalby	High	Solid	15-Oct	2.148	10	-19.7	1.981	1.217	1.615	0.224	0.506	0.729	0.2
Dalby	High	Solid	30-Oct	2.280	8	-14.8	2.128	1.146	1.477	0.429	0.721	0.938	0.1
Dalby	High	Solid	15-Nov	2.292	7	-14.3	2.159	1.041	1.355	0.538	0.846	1.070	0.1
Dalby	High	Single	30-Sep	2.375	6	-11.2	2.292	0.888	1.142	0.780	1.094	1.309	0.0
Dalby	High	Single	15-Oct	2.206	9	-17.6	2.095	0.755	0.948	0.855	1.199	1.347	0.0
Dalby	High	Single	30-Oct	2.423	5	-9.5	2.361	0.705	0.898	1.010	1.367	1.570	0.0
Dalby	High	Single	15-Nov	2.109	11	-21.2	2.043	0.671	0.834	0.859	1.160	1.334	0.0
Dalby	High	Double	30-Sep	2.539	3	-5.1	2.486	0.720	0.912	1.079	1.435	1.656	0.0
Dalby	High	Double	15-Oct	2.641	2	-1.3	2.618	0.686	0.887	1.243	1.572	1.781	0.0
Dalby	High	Double	30-Oct	2.676	1	0.0	2.659	0.678	0.835	1.150	1.586	1.828	0.0
Dalby	High	Double	15-Nov	2.523	4	-5.7	2.496	0.632	0.772	1.207	1.557	1.758	0.0
Bungunya	Low	Solid	30-Sep	0.255	30	-85.3	0.182	0.997	1.525	-1.320	-1.191	-1.034	43.9
Bungunya	Low	Solid	15-Oct	-0.115	36	-106.6	-0.282	0.977	1.311	-1.470	-1.360	-1.237	60.8
Bungunya	Low	Solid	30-Oct	0.078	35	-95.5	0.013	0.974	1.498	-1.469	-1.341	-1.180	49.5
Bungunya	Low	Solid	15-Nov	0.401	22	-76.9	0.318	1.171	1.793	-1.462	-1.308	-1.114	41.1
Bungunya	Low	Single	30-Sep	0.098	34	-94.4	-0.060	0.853	1.149	-1.056	-0.969	-0.863	52.9
Bungunya	Low	Single	15-Oct	0.215	31	-87.6	0.066	0.981	1.327	-1.189	-1.068	-0.924	47.4
Bungunya	Low	Single	30-Oct	0.190	32	-89.1	0.123	0.871	1.332	-1.195	-1.078	-0.936	45.0
Bungunya	Low	Single	15-Nov	0.266	29	-84.7	0.192	0.930	1.401	-1.199	-1.079	-0.931	42.8
Bungunya	Low	Double	30-Sep	0.319	26	-81.6	0.155	0.898	1.191	-0.886	-0.799	-0.693	42.7
Bungunya	Low	Double	15-Oct	0.365	23	-79.0	0.299	0.887	1.361	-1.037	-0.919	-0.779	38.7
Bungunya	Low	Double	30-Oct	0.337	24	-80.6	0.274	0.863	1.316	-1.028	-0.912	-0.778	39.2
Bungunya	Low	Double	15-Nov	0.306	27	-82.4	0.241	0.855	1.295	-1.048	-0.933	-0.797	40.1
Bungunya	Medium	Solid	30-Sep	0.109	33	-93.7	-0.032	0.813	1.085	-1.030	-0.926	-0.816	51.8
Bungunya	Medium	Solid	15-Oct	0.284	28	-83.6	0.167	0.917	1.227	-1.114	-0.959	-0.808	43.0
Bungunya	Medium	Solid	30-Oct	0.638	18	-63.2	0.557	1.031	1.530	-1.224	-0.897	-0.666	30.7
Bungunya	Medium	Solid	15-Nov	0.337	24	-80.6	0.229	1.000	1.358	-1.268	-1.068	-0.882	41.2
Bungunya	Medium	Single	30-Sep	0.489	21	-71.8	0.356	0.841	1.138	-0.751	-0.621	-0.487	32.7
Bungunya	Medium	Single	15-Oct	0.562	20	-67.6	0.455	0.863	1.176	-0.818	-0.658	-0.490	28.6
Bungunya	Medium	Single	30-Oct	0.771	14	-55.6	0.723	0.868	1.233	-0.924	-0.576	-0.327	20.3
Bungunya	Medium	Single	15-Nov	0.631	19	-63.7	0.578	0.839	1.211	-0.967	-0.646	-0.417	25.1
Bungunya	Medium	Double	30-Sep	0.740	15	-57.4	0.628	0.847	1.130	-0.585	-0.421	-0.265	20.4
Bungunya	Medium	Double	15-Oct	0.662	17	-61.9	0.600	0.801	1.199	-0.658	-0.482	-0.353	24.5

Site	Starting PAW	Row Config.	Sowing Date	Mean	Rank	% Diff	Median	SD	IQR	1%	5%	10%	% Loss
Bungunya	Medium	Double	30-Oct	0.851	12	-51.0	0.792	0.854	1.202	-0.793	-0.453	-0.219	16.8
Bungunya	Medium	Double	15-Nov	0.722	16	-58.4	0.674	0.783	1.112	-0.806	-0.491	-0.263	18.8
Bungunya	High	Solid	30-Sep	0.772	13	-55.5	0.615	0.720	0.897	-0.263	-0.063	0.028	8.2
Bungunya	High	Solid	15-Oct	0.929	11	-46.5	0.755	0.814	1.019	-0.237	-0.024	0.071	6.1
Bungunya	High	Solid	30-Oct	1.065	9	-38.7	0.926	0.856	1.114	-0.233	-0.047	0.099	6.4
Bungunya	High	Solid	15-Nov	1.045	10	-39.8	0.890	0.826	1.070	-0.172	0.012	0.134	4.5
Bungunya	High	Single	30-Sep	1.161	8	-33.1	1.014	0.645	0.763	0.202	0.412	0.518	0.2
Bungunya	High	Single	15-Oct	1.290	6	-25.7	1.141	0.779	0.979	0.131	0.351	0.458	0.3
Bungunya	High	Single	30-Oct	1.382	5	-20.4	1.321	0.731	0.957	0.040	0.289	0.482	0.7
Bungunya	High	Single	15-Nov	1.279	7	-26.3	1.194	0.660	0.927	0.186	0.386	0.495	0.2
Bungunya	High	Double	30-Sep	1.429	4	-17.7	1.315	0.630	0.782	0.425	0.641	0.745	0.0
Bungunya	High	Double	15-Oct	1.504	2	-13.4	1.436	0.610	0.824	0.392	0.629	0.781	0.0
Bungunya	High	Double	30-Oct	1.467	3	-15.5	1.417	0.627	0.828	0.227	0.506	0.708	0.1
Bungunya	High	Double	15-Nov	1.736	1	0.0	1.753	0.671	0.947	0.427	0.659	0.819	0.0
Moree	Low	Solid	30-Sep	0.055	36	-96.3	-0.310	1.237	1.811	-1.278	-1.240	-1.207	58.1
Moree	Low	Solid	15-Oct	0.132	33	-91.1	-0.244	1.333	1.971	-1.326	-1.293	-1.253	55.9
Moree	Low	Solid	30-Oct	0.116	34	-92.1	-0.065	1.111	1.507	-1.461	-1.326	-1.172	52.3
Moree	Low	Solid	15-Nov	0.056	35	-96.2	-0.155	1.106	1.475	-1.418	-1.310	-1.185	55.1
Moree	Low	Single	30-Sep	0.295	29	-80.0	0.026	1.054	1.597	-0.919	-0.866	-0.831	49.2
Moree	Low	Single	15-Oct	0.224	32	-84.8	0.083	0.913	1.251	-1.136	-1.001	-0.860	46.3
Moree	Low	Single	30-Oct	0.484	21	-67.2	0.398	0.986	1.505	-1.060	-0.940	-0.782	35.9
Moree	Low	Single	15-Nov	0.486	20	-67.1	0.405	0.874	1.291	-1.021	-0.777	-0.599	33.2
Moree	Low	Double	30-Sep	0.285	30	-80.7	0.143	0.901	1.235	-1.024	-0.901	-0.770	43.4
Moree	Low	Double	15-Oct	0.326	28	-77.9	0.264	0.873	1.323	-1.046	-0.933	-0.796	40.0
Moree	Low	Double	30-Oct	0.353	27	-76.1	0.282	0.893	1.361	-1.046	-0.930	-0.787	39.5
Moree	Low	Double	15-Nov	0.285	30	-80.7	0.210	0.829	1.267	-1.020	-0.914	-0.780	40.7
Moree	Medium	Solid	30-Sep	0.382	24	-74.1	0.214	1.068	1.437	-1.155	-1.011	-0.853	41.9
Moree	Medium	Solid	15-Oct	0.464	22	-68.6	0.249	1.055	1.372	-0.905	-0.798	-0.685	40.1
Moree	Medium	Solid	30-Oct	0.451	23	-69.5	0.368	1.052	1.455	-1.360	-1.100	-0.872	36.3
Moree	Medium	Solid	15-Nov	0.379	25	-74.3	0.238	1.010	1.367	-1.191	-1.006	-0.825	40.3
Moree	Medium	Single	30-Sep	0.639	15	-56.7	0.541	0.867	1.174	-0.780	-0.587	-0.419	25.5
Moree	Medium	Single	15-Oct	0.591	16	-60.0	0.545	0.874	1.195	-0.995	-0.734	-0.523	26.8
Moree	Medium	Single	30-Oct	0.778	13	-47.3	0.717	0.910	1.304	-0.943	-0.599	-0.359	21.5
Moree	Medium	Single	15-Nov	0.649	14	-56.1	0.586	0.850	1.166	-0.868	-0.627	-0.425	24.1
Moree	Medium	Double	30-Sep	0.531	19	-64.0	0.456	0.858	1.160	-0.938	-0.724	-0.539	29.4
Moree	Medium	Double	15-Oct	0.373	26	-74.7	0.297	0.902	1.371	-1.045	-0.932	-0.783	38.6
Moree	Medium	Double	30-Oct	0.535	18	-63.8	0.454	0.999	1.529	-1.040	-0.915	-0.748	34.3
Moree	Medium	Double	15-Nov	0.553	17	-62.6	0.484	0.851	1.276	-0.890	-0.668	-0.508	30.3
Moree	High	Solid	30-Sep	1.477	1	0	1.370	1.095	1.592	-0.237	-0.047	0.125	6.4
Moree	High	Solid	15-Oct	0.871	12	-41.0	0.521	1.118	1.597	-0.467	-0.304	-0.217	28.3
Moree	High	Solid	30-Oct	0.947	10	-35.9	0.799	0.944	1.227	-0.482	-0.299	-0.137	15.2
Moree	High	Solid	15-Nov	0.888	11	-39.9	0.641	1.026	1.564	-0.458	-0.280	-0.193	24.4
Moree	High	Single	30-Sep	1.091	8	-26.1	0.803	0.865	1.070	-0.021	0.197	0.301	1.2
Moree	High	Single	15-Oct	1.321	4	-10.6	1.254	0.795	1.100	-0.193	0.122	0.345	3.1
Moree	High	Single	30-Oct	1.353	3	-8.4	1.290	0.763	1.039	-0.092	0.217	0.418	1.8
Moree	High	Single	15-Nov	1.400	2	-5.2	1.322	0.735	0.990	0.054	0.338	0.518	0.7
Moree	High	Double	30-Sep	1.256	6	-15.0	1.214	0.853	1.132	-0.537	-0.123	0.177	6.9
Moree	High	Double	15-Oct	0.988	9	-33.1	0.997	0.740	0.956	-0.707	-0.293	0.014	9.7

Site	Starting PAW	Row Config.	Sowing Date	Mean	Rank	% Diff	Median	SD	IQR	1%	5%	10%	% Loss
Moree	High	Double	30-Oct	1.301	5	-11.9	1.309	0.787	1.011	-0.508	-0.048	0.269	5.7
Moree	High	Double	15-Nov	1.198	7	-18.9	1.163	0.723	0.939	-0.338	0.023	0.293	4.6
Wee Waa	Low	Solid	30-Sep	0.534	34	-75.0	0.264	1.413	1.897	-1.381	-1.235	-1.064	42.1
Wee Waa	Low	Solid	15-Oct	0.485	36	-77.3	0.047	1.674	2.636	-1.406	-1.379	-1.322	49.1
Wee Waa	Low	Solid	30-Oct	0.486	35	-77.2	0.231	1.311	1.757	-1.226	-1.101	-0.965	42.9
Wee Waa	Low	Solid	15-Nov	0.535	33	-74.9	0.285	1.428	1.916	-1.440	-1.285	-1.101	42.3
Wee Waa	Low	Single	30-Sep	0.922	22	-56.8	0.818	1.198	1.813	-1.039	-0.795	-0.600	26.3
Wee Waa	Low	Single	15-Oct	0.644	31	-69.8	0.312	1.483	2.394	-1.125	-1.095	-1.029	43.0
Wee Waa	Low	Single	30-Oct	0.641	32	-70.0	0.291	1.410	2.216	-0.992	-0.952	-0.903	42.9
Wee Waa	Low	Single	15-Nov	0.858	26	-59.8	0.760	1.285	1.967	-1.162	-0.996	-0.794	29.9
Wee Waa	Low	Double	30-Sep	0.757	28	-64.5	0.667	1.119	1.713	-1.003	-0.853	-0.682	29.6
Wee Waa	Low	Double	15-Oct	0.766	27	-64.1	0.682	1.081	1.647	-0.930	-0.790	-0.619	28.6
Wee Waa	Low	Double	30-Oct	0.757	28	-64.5	0.668	1.023	1.540	-0.844	-0.711	-0.549	27.4
Wee Waa	Low	Double	15-Nov	0.749	30	-64.9	0.654	1.107	1.687	-0.993	-0.850	-0.671	29.8
Wee Waa	Medium	Solid	30-Sep	0.862	25	-59.6	0.586	1.364	1.786	-0.899	-0.782	-0.632	31.6
Wee Waa	Medium	Solid	15-Oct	0.879	24	-58.8	0.476	1.606	2.475	-0.997	-0.909	-0.852	39.4
Wee Waa	Medium	Solid	30-Oct	0.900	23	-57.8	0.443	1.582	2.219	-0.854	-0.757	-0.701	38.8
Wee Waa	Medium	Solid	15-Nov	0.954	20	-55.3	0.720	1.337	1.799	-0.924	-0.756	-0.570	27.6
Wee Waa	Medium	Single	30-Sep	1.271	13	-40.5	1.149	1.198	1.790	-0.587	-0.429	-0.243	16.5
Wee Waa	Medium	Single	15-Oct	1.216	14	-43.0	1.116	1.137	1.687	-0.648	-0.394	-0.204	15.7
Wee Waa	Medium	Single	30-Oct	1.208	15	-43.4	1.087	1.144	1.530	-0.666	-0.417	-0.182	14.5
Wee Waa	Medium	Single	15-Nov	1.190	16	-44.3	1.075	1.174	1.764	-0.633	-0.475	-0.293	18.1
Wee Waa	Medium	Double	30-Sep	1.099	18	-48.5	1.047	0.910	1.273	-0.685	-0.318	-0.040	11.0
Wee Waa	Medium	Double	15-Oct	1.115	17	-47.8	1.016	1.084	1.634	-0.573	-0.433	-0.261	17.7
Wee Waa	Medium	Double	30-Oct	0.949	21	-55.6	0.926	0.964	1.338	-0.949	-0.593	-0.320	17.3
Wee Waa	Medium	Double	15-Nov	0.989	19	-53.7	0.887	0.971	1.438	-0.503	-0.377	-0.231	17.6
Wee Waa	High	Solid	30-Sep	1.557	10	-27.1	1.293	1.172	1.482	-0.024	0.209	0.332	1.2
Wee Waa	High	Solid	15-Oct	1.549	11	-27.4	1.086	1.435	1.931	-0.146	0.078	0.193	3.0
Wee Waa	High	Solid	30-Oct	1.657	9	-22.4	1.508	1.207	1.628	-0.262	-0.005	0.219	5.2
Wee Waa	High	Solid	15-Nov	1.695	8	-20.6	1.564	1.152	1.549	-0.224	0.058	0.298	3.9
Wee Waa	High	Single	30-Sep	1.979	4	-7.3	1.871	0.988	1.428	0.329	0.608	0.790	0.0
Wee Waa	High	Single	15-Oct	2.034	3	-4.7	1.925	0.972	1.378	0.393	0.688	0.868	0.0
Wee Waa	High	Single	30-Oct	2.135	1	0.0	2.035	1.087	1.482	0.075	0.497	0.814	0.5
Wee Waa	High	Single	15-Nov	1.881	6	-11.9	1.878	0.884	1.116	-0.148	0.387	0.731	1.7
Wee Waa	High	Double	30-Sep	1.350	12	-36.8	1.284	0.614	0.779	0.279	0.488	0.622	0.1
Wee Waa	High	Double	15-Oct	2.039	2	-4.5	1.955	0.821	1.105	0.517	0.842	1.048	0.0
Wee Waa	High	Double	30-Oct	1.802	7	-15.6	1.763	0.814	1.060	0.079	0.498	0.776	0.6
Wee Waa	High	Double	15-Nov	1.963	5	-8.1	1.995	0.712	0.867	0.169	0.721	1.039	0.4
Gunnedah	Low	Solid	30-Sep	0.536	32	-66.3	0.436	1.277	1.928	-1.457	-1.296	-1.096	38.4
Gunnedah	Low	Solid	15-Oct	0.405	35	-74.5	0.258	1.170	1.611	-1.414	-1.207	-1.008	41.1
Gunnedah	Low	Solid	30-Oct	0.516	33	-67.5	0.429	1.034	1.536	-1.265	-0.978	-0.774	35.6
Gunnedah	Low	Solid	15-Nov	0.364	36	-77.1	0.303	0.850	1.221	-1.246	-0.925	-0.697	36.8
Gunnedah	Low	Single	30-Sep	0.716	28	-55.0	0.649	0.929	1.356	-0.972	-0.669	-0.440	25.4
Gunnedah	Low	Single	15-Oct	0.770	25	-51.6	0.699	0.946	1.391	-0.966	-0.638	-0.410	23.8
Gunnedah	Low	Single	30-Oct	0.720	27	-54.7	0.667	0.831	1.149	-0.938	-0.573	-0.328	20.2
Gunnedah	Low	Single	15-Nov	0.621	30	-60.9	0.592	0.844	1.167	-1.006	-0.708	-0.473	24.4
Gunnedah	Low	Double	30-Sep	1.135	11	-28.6	1.255	1.127	1.774	-1.015	-0.783	-0.508	19.6
Gunnedah	Low	Double	15-Oct	0.804	24	-49.4	0.748	0.843	1.192	-0.801	-0.475	-0.250	18.0



Site	Starting PAW	Row Config.	Sowing Date	Mean	Rank	% Diff	Median	SD	IQR	1%	5%	10%	% Loss
Gunnedah	Low	Double	30-Oct	0.832	23	-47.7	0.797	0.768	1.027	-0.767	-0.402	-0.151	14.0
Gunnedah	Low	Double	15-Nov	0.691	29	-56.5	0.674	0.747	1.018	-0.829	-0.518	-0.290	18.5
Gunnedah	Medium	Solid	30-Sep	0.550	31	-65.4	0.427	1.170	1.614	-1.379	-1.126	-0.891	35.6
Gunnedah	Medium	Solid	15-Oct	0.864	21	-45.7	0.772	1.091	1.583	-1.162	-0.775	-0.486	24.1
Gunnedah	Medium	Solid	30-Oct	0.760	26	-52.2	0.711	0.959	1.321	-1.154	-0.749	-0.458	22.4
Gunnedah	Medium	Solid	15-Nov	0.515	34	-67.6	0.452	0.820	1.147	-1.052	-0.731	-0.506	29.0
Gunnedah	Medium	Single	30-Sep	1.028	15	-35.3	0.966	1.005	1.441	-0.908	-0.505	-0.234	16.0
Gunnedah	Medium	Single	15-Oct	0.964	17	-39.4	0.906	0.934	1.294	-0.893	-0.502	-0.202	15.1
Gunnedah	Medium	Single	30-Oct	0.944	18	-40.6	0.927	0.829	1.100	-0.866	-0.436	-0.122	12.7
Gunnedah	Medium	Single	15-Nov	0.845	22	-46.9	0.845	0.829	1.117	-0.886	-0.525	-0.246	15.9
Gunnedah	Medium	Double	30-Sep	1.231	4	-22.6	1.231	0.855	1.128	-0.687	-0.211	0.113	7.9
Gunnedah	Medium	Double	15-Oct	1.180	7	-25.8	1.186	0.808	1.042	-0.687	-0.220	0.121	8.0
Gunnedah	Medium	Double	30-Oct	1.170	8	-26.4	1.187	0.789	0.987	-0.690	-0.209	0.124	7.9
Gunnedah	Medium	Double	15-Nov	0.921	20	-42.1	0.932	0.733	0.976	-0.698	-0.314	-0.051	11.2
Gunnedah	High	Solid	30-Sep	1.121	12	-29.5	1.046	1.169	1.666	-1.119	-0.666	-0.347	17.7
Gunnedah	High	Solid	15-Oct	1.075	13	-32.4	1.011	1.090	1.536	-1.115	-0.646	-0.303	16.7
Gunnedah	High	Solid	30-Oct	0.923	19	-41.9	0.890	0.954	1.285	-1.107	-0.628	-0.300	16.8
Gunnedah	High	Solid	15-Nov	0.986	16	-38.0	0.905	0.757	0.991	-0.292	-0.086	0.077	7.4
Gunnedah	High	Single	30-Sep	1.167	9	-26.6	1.144	0.916	1.224	-0.827	-0.349	-0.015	10.3
Gunnedah	High	Single	15-Oct	1.181	6	-25.7	1.192	0.871	1.134	-0.818	-0.308	0.044	9.3
Gunnedah	High	Single	30-Oct	1.042	14	-34.5	1.089	0.769	0.967	-0.825	-0.327	0.010	9.9
Gunnedah	High	Single	15-Nov	1.141	10	-28.2	1.092	0.616	0.817	-0.025	0.197	0.372	1.3
Gunnedah	High	Double	30-Sep	1.212	5	-23.8	1.219	0.831	1.087	-0.685	-0.224	0.123	8.0
Gunnedah	High	Double	15-Oct	1.590	1	0.0	1.638	0.647	0.778	-0.119	0.430	0.755	1.5
Gunnedah	High	Double	30-Oct	1.477	2	-7.1	1.518	0.738	0.928	-0.358	0.157	0.509	3.4
Gunnedah	High	Double	15-Nov	1.364	3	-14.2	1.385	0.647	0.765	-0.355	0.251	0.558	2.7

Notes:

Rank: rank according to mean GM at each location (1=highest, 36=lowest)

% Diff: percentage difference compared to the highest mean GM at each location

1%, 5%, 10%: the corresponding percentiles

% Loss: percentage of simulated sample with a negative gross margin