

Supplementary Material

Effects of ten–eleven translocation 1 (*Tet1*) on DNA methylation and gene expression in chicken primordial germ cells

Minli Yu^{A,B}, Dongfeng Li^A, Wanyan Cao^A, Xiaolu Chen^A and Wenxing Du^{A,B}

^ADepartment of Animal Genetics, Breeding and Reproduction, College of Animal Science and Technology, Nanjing Agricultural University, Nanjing, 210095 Jiangsu Province, PR China.

^BCorresponding authors. Emails: yuminli@njau.edu.cn; duwx@njau.edu.cn

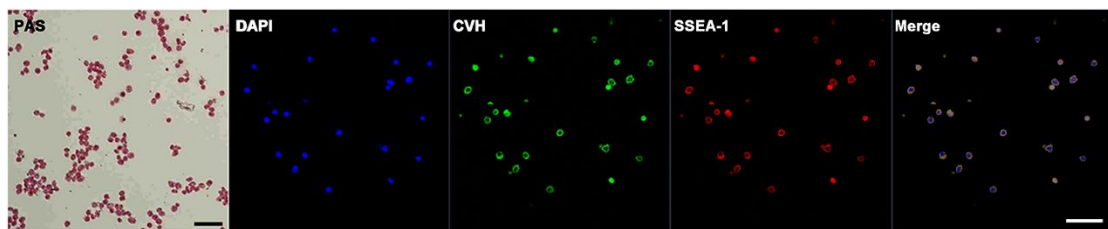


Fig. S1. Identification of chicken PGCs. PGCs were sorted using a chicken PGC-specific marker, anti-SSEA-1 antibody by FACS. Purified PGCs were identified by staining for PAS reaction and anti-CVH antibody. Scale bar: 50 μ m.