

10.1071/RD16398\_AC

© CSIRO 2017

Supplementary Material: *Reproduction, Fertility and Development*, 2017, 29(12), 2400–2410.

## **Supplementary Material**

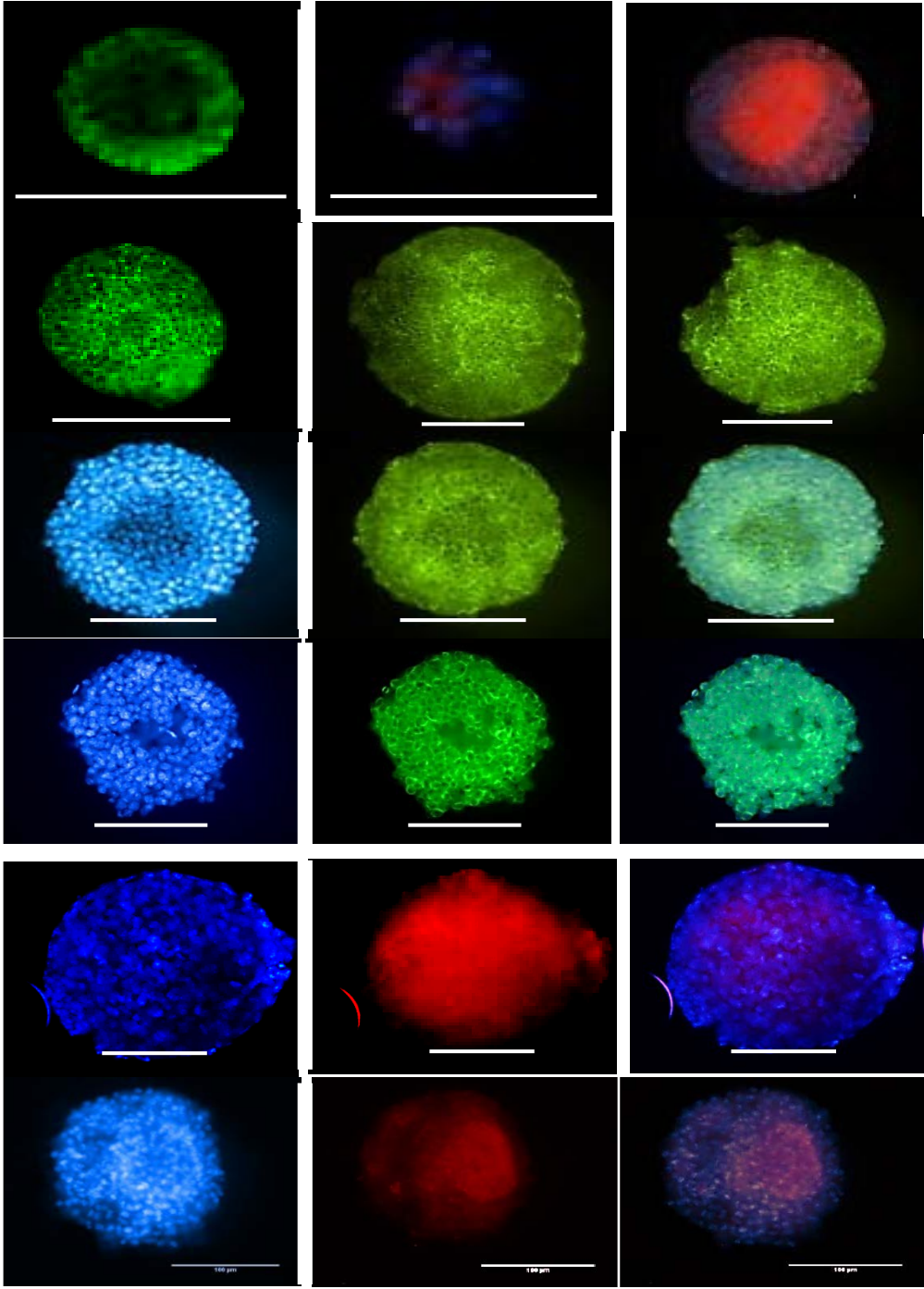
### **Effects of ovarian disaggregation on adult murine follicle yield and viability**

*Fiona Young<sup>A,B,C</sup>, John Drummond<sup>A</sup>, Emma Akers<sup>A</sup>, Louise Bartle<sup>A</sup>, David Kennedy<sup>A</sup> and Mohammad Asaduzzaman<sup>A</sup>*

<sup>A</sup>Department of Medical Biotechnology, Flinders University, Adelaide, SA 5042, Australia.

<sup>B</sup>Flinders Fertility Pty Ltd, Flinders Medical Centre, Adelaide, SA 5042, Australia.

<sup>C</sup>Corresponding author. Email: [fiona.young@flinders.edu.au](mailto:fiona.young@flinders.edu.au)



**Fig. S1.** Murine follicles stained with DAPI and CMXRos or alpha Tubulin. Murine ovaries were disaggregated with 590 U mL<sup>-1</sup> collagenase IV (Col-IV), or 590 U mL<sup>-1</sup> Animal Origin Free collagenase IV (AOF 590), or 1180 U mL<sup>-1</sup> AOF (AOF 1180) or mechanically disaggregated in DMEM cell culture medium. The isolated follicles were stained with DAPI (blue) and the mitochondrial function indicator CMXRos (red) or the anti-alpha tubulin antibody (green). The follicles were scored according to morphological integrity from M1 morphologically intact, high quality follicles to M4 low quality follicles with disrupted abnormal morphology. (A, B) M1 primary follicle isolated after Col-IV disaggregation. (C) M1 secondary follicle isolated after mechanical disaggregation. (D) M2 secondary follicle isolated after AOF 1180 disaggregation. (E) M3a antral follicle isolated after AOF 590 disaggregation. (F) M3b secondary follicle isolated after AOF 1180 disaggregation (G) M3a secondary follicle isolated after Col IV disaggregation. (H) M4b secondary follicle isolated after AOF 590 disaggregation. Ragged outline and possibly missing the oocyte. Cytoplasmic alpha tubulin staining around the DAPI-stained GC nuclei. (I) M3a antral follicle isolated after AOF 590 disaggregation. (J) M4a secondary follicle isolated after mechanical disaggregation. Scale bars 50  $\mu$ m.