

## SAGA 2017

### 15th Biennial Conference & Exhibition

10–13 September 2017  
The Lord Charles | Cape Town



## Expanding Frontiers

September 2017 will see the geophysical fraternity descend upon the winelands of Cape Town for the 15th South African Geophysical Association's Biennial Conference & Exhibition. Once more the Conference will be held in one of South Africa's most attractive locales, the small town of Somerset West. The Lord Charles Hotel is a premier conference venue, just half an hour's drive from Cape Town International Airport and the CBD, its atmosphere will most certainly provide a refined and contemporary backdrop to the event.

Somerset West first appeared in the history books in 1672 after a cattle post was established there by Dutch soldiers. Formally founded in 1822 and located on part of the historic farm of Vergelegen, the town was named after English governor of the Cape Colony, Lord Charles Henry Somerset. The historically-rich region is replete with attractions ranging from world-class wine estates to exquisite nature reserves. As home to the greatest non-tropical concentration of higher plant species, the Cape Floristic Region is also the smallest of the six recognised floral kingdoms of the world and is a highly recommended must-see.

Join us for three days of comprehensive and in-depth talks, complemented by discussions and workshops bracketing the main event. Delegates from both private and public sectors of the mining and petroleum industries as well as leading experts in all disciplines of geophysics will attend. The exhibition affords excellent networking opportunities with all manner of related service providers including consultants and contractors. Delegates are once again afforded the opportunity to invest in our future geoscientists via the 'Adopt-a-Student' mentorship programme.

The talks and workshops will feature hot topics and the most up-to-date content of contemporary of geophysics, including borehole geophysics, potential field geophysics, electrical and electromagnetic geophysics, seismology, minerals exploration, oil and gas exploration,

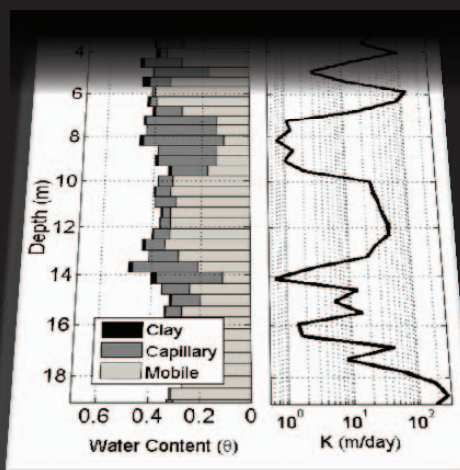
geophysical data processing and modelling, integrated geoscience, near-surface geophysics, geophysics in near mine environments, archaeological, agricultural and bio-geophysics, environmental and engineering geophysics, groundwater and contaminant mapping, unmanned aerial vehicles (UAVs) in geoscience and the structure and evolution of the African continent.

The programme is bursting with intellectual and social events along with exciting pre- and post-conference trips, hosted by local experts to guide your appreciation of the splendour of this

region. The SAGA 2017 Committee is proud to be hosting 'special sessions', which will include the launch of a newly established geophysical test site over the world-renowned Vredefort meteorite impact site. Detailed geological and geophysical investigations will be presented with contractors showcasing their efforts.

We're excited to host you and your colleagues in the breath-taking Cape Winelands! Abstract submissions are now open – for further information and early bird registration, visit [www.sagaconference.co.za](http://www.sagaconference.co.za).

## Hydrogeologic Properties Measured with NMR



Water Content  
Porosity  
Permeability  
Transmissivity  
Specific Yield

Logging through PVC or open holes  
& Non-invasive surface imaging

Sales | Rentals | Services  
[www.vista-clara.com](http://www.vista-clara.com)



**VISTA CLARA** INC.  
NMR GEOPHYSICS

## The Geological Survey of Queensland opens a new \$5 million drill core storage facility

Queensland's resources exploration industry now has easier access to drill core thanks to a \$5 million expansion of the Queensland Government's Exploration Data Centre (EDC) at Zillmere on Brisbane's north side.

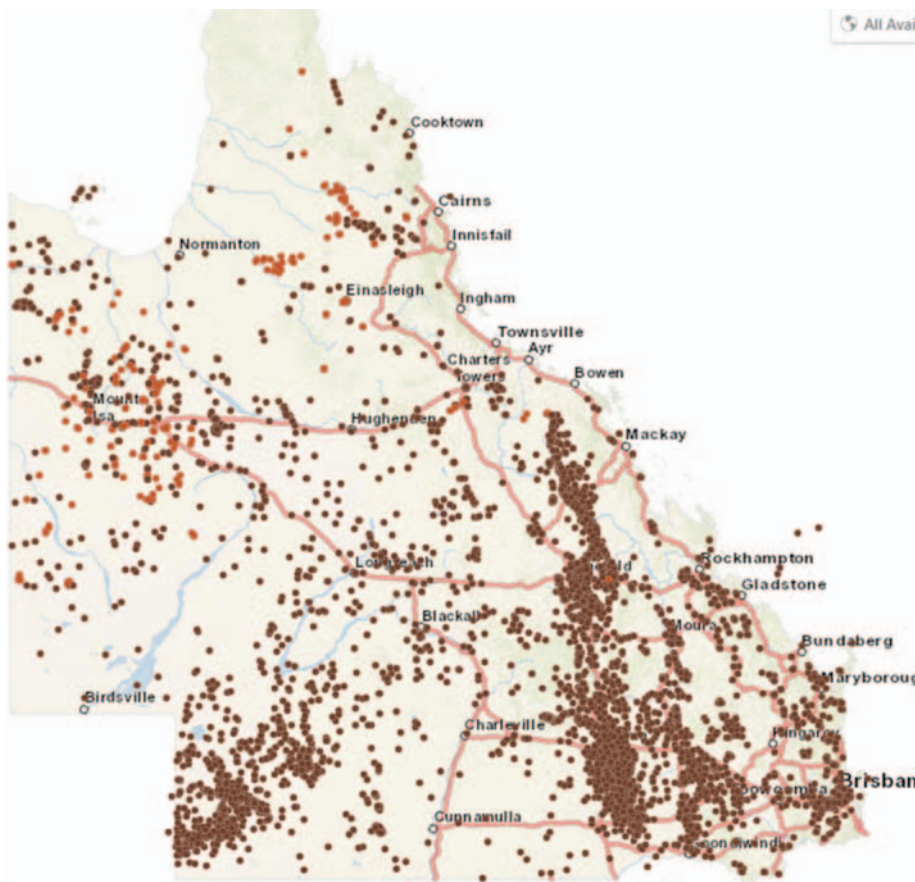


*New drill core storage facility at Zillmere.*

The Minister for Natural Resources and Mines, Dr Anthony Lynham, and State Member for Nudgee, Ms Leanne Linard, officially opened the EDC expansion on Thursday 20 October.

The expansion will provide greater access and storage capacity for exploration samples from throughout Queensland, adding to the 800 plus kilometres of core samples currently stored at the facility.

The Exploration Data Centre offers the resources exploration industry a comprehensive catalogue of samples from



**Figure 1.** The collar locations for drill core stored at the new facility.

over 11 600 drill holes collected by the Geological Survey of Queensland over

the past 100 years (see Figure 1), with the oldest being from the Mitchell town bore drilled in 1886. The expanded facility will provide storage for an estimated 500 km of additional samples. In addition, the EDC houses the Geological Survey of Queensland's HyLogger™ digital spectral scanning technology.

The centre is open from 8 am to 5 pm Monday to Friday or other times by appointment.

Address and contact details:

68 Pineapple Street, Zillmere, Qld 4034  
 Telephone: +61 7 3096 6810  
 Facsimile: +61 7 3096 6817  
 Mobile: 0408 887 685  
 Facebook: [Mining Qld](#)  
 Twitter: [@miningqld](#)  
<https://www.business.qld.gov.au/industry/mining/mining-online-services>  
<https://www.business.qld.gov.au/industry/mining/geoscience-data-information/core-rock-collections>



*Queensland's Chief Government Geologist, Tony Knight (left), the Queensland Minister for Natural Resources and Mines, Anthony Lynham, and the State Member for Nudgee, Leanne Linard, at the official opening of the new storage facility.*