

# CONFERENCE HANDBOOK



Hosted by:



**ASEG-PESA 2013**

'THE EUREKA MOMENT'  
11-14 AUGUST 2013 • MELBOURNE, AUSTRALIA





An aerial photograph of the ship 'WG VESPUCCI' sailing on the ocean. The ship is white with a blue hull. On the deck, there are two yellow cranes and a green helipad with a yellow circle and the letters 'H'. Several red lines are visible extending from the ship's deck towards the top corners of the image, representing the IsoMetrix technology. The ship's name 'WG VESPUCCI' is visible on the side of the hull.

# IsoMetrix

MARINE ISOMETRIC  
SEISMIC TECHNOLOGY

## First three IsoMetrix surveys acquired in ongoing program It's reading between the lines that sets our technology apart.

Since its mid-2012 launch, IsoMetrix\* marine isometric seismic technology has acquired surveys in the North Sea, Barents Sea, and South Africa, with the program continuing in Canada.

IsoMetrix technology overcomes the sparse crossline sampling of conventional seismic methods. The returning wavefield is fully captured to deliver a 6.25m<sup>2</sup> grid of data, providing the clearest, most accurate images of the subsurface ever recorded.

**Visit us at stand no. 33**

[slb.com/isometrix](http://slb.com/isometrix)





## Welcome to the ASEG-PESA 2013 Conference and Exhibition

On behalf of the ASEG-PESA 2013 Conference Organising Committee we offer you a warm welcome to Melbourne and to the 23rd International Geophysical Conference and Exhibition, the largest geophysical exploration conference in the southern hemisphere, attracting geophysicists from minerals and hydrocarbon exploration in equal numbers.

We are very proud of the breadth and depth of this year's technical programme. You will find an unprecedented number of technical presentations comprising five parallel sessions through the entire conference with an additional sixth session on Tuesday 13 August.

You will also find more than 20 world-class keynote speakers from industry and academia presenting on a broad variety of geophysical exploration topics.

In the days preceding and following the main conference you can attend a plethora of workshops, fora, training courses and field trips in minerals and petroleum exploration techniques provided by acknowledged industry experts.

Our conference venue, the Melbourne Convention and Exhibition Centre, was only recently constructed and provides a stunning venue on the southern bank of the Yarra River and in the heart of Melbourne. The exhibition area will be a focal point for the conference. This year the technical sessions are located right next to the exhibition area, minimising the amount of time you will have to spend

getting from one to the other. Instead you will have extra time to visit more than 80 exhibitors showcasing their exploration hardware, software and services in the exhibition area. The exhibition hall is the perfect place to get up-to-date on the latest geophysical technologies.

On your way back to the many technical sessions don't forget to check out the technical posters located in the foyer area right outside the entry to the technical sessions.

The motto for this year's conference, 'The Eureka Moment', not only refers to a moment of sudden scientific insight, but also tips the proverbial hat to the golden riches of Victoria's past. This colourful story will be explored further during our Gala Dinner on Tuesday 13 August at the nearby National Gallery of Victoria, when our invited guest speaker, Professor Geoffrey Blainey, will entertain you with stories from Australia's first mining boom.

The Victorian gold rush made Melbourne one of the great cities of the British Empire and eventually the world. In between all matters geophysical we hope that you will also find the opportunity to explore and enjoy the many fine things that the city has to offer. The conference is timed close to the business end of the Australian Rules football season, so we hope you can stay over the weekend and make it to a game.

We thank our platinum sponsor, WesternGeco, and our gold sponsors, CGG and Rio Tinto, and the many other

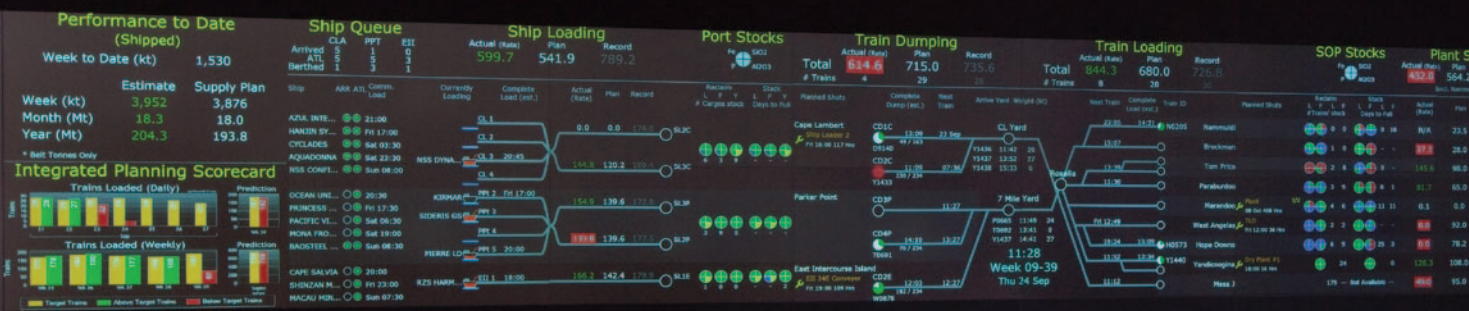
companies and organisations sponsoring the 23rd International Geophysical Conference and Exhibition. Their sponsorship assures that our societies can continue to provide a recognised industry forum every 18 months in which to present and learn about the newest geophysical exploration techniques and practices.

Once again, welcome!

Asbjorn Norlund Christensen  
Co-chair (Minerals)  
*Fugro Airborne Surveys*  
Jarrod Dunne  
Co-chair (Petroleum)  
*MEO Australia*

Conference Organising Committee:

Theo Aravanis, Finance  
*Rio Tinto Exploration*  
Michael Asten, Technical Programme  
*Monash University*  
Mark Dransfield, Sponsorship  
*Fugro Airborne Surveys*  
Merrie-Ellen Gunning, Workshops & AV  
*DownUnder GeoSolutions*  
Suzanne Haydon, Publicity  
*Geoscience Victoria*  
Jim Macnae, Student Coordinator  
*RMIT University*  
Richard MacRae, Exhibition  
*MMG*  
Bob Smith, Workshops  
*Greenfields Geophysics*  
John Theodoridis, Social Events  
*Independent*  
Justin Ward, Conference Proceedings CD  
*Modern Mag*



# The future of mining

Rio Tinto is a global mining and metals group dedicated to the smartest discovery, extraction and processing of the Earth's natural resources.

The Mine of the Future™ programme is not a single mine site or initiative, it is a holistic approach taken across Rio Tinto to find advanced ways to mine and extract minerals more efficiently while reducing environmental impacts and most importantly, further improving safety.

These advances are about achieving competitive advantage through step changes in mining that come from leadership in technology, starting with academic origin and resulting in a commercial outcome.

Through this approach Rio Tinto is changing the face of mining. We aim to be global leaders in fully integrated, automated operations. To learn more about our Mine of the Future™ programme visit [www.riotinto.com](http://www.riotinto.com)

## President's welcome

Welcome to Melbourne and the 23rd ASEG-PESA International Geophysical Conference and Exhibition. This conference is jointly hosted by the Australian Society of Exploration Geophysicists (ASEG) and the Petroleum Exploration Society of Australia (PESA). The conference programme includes three days of oral and poster presentations, industrial exhibitions and workshops on the days before and after.

The theme of the conference is 'The Eureka Moment': the word for excitement of discovery! The first usage of this word is attributed to Archimedes, the great philosopher and scientist in ancient Greece. He reportedly shouted 'Eureka' when he discovered the solution to the difficult problem of finding impurity of the crown of the king. It is an appropriate theme for Melbourne, the city with the third largest Greek population in the world next to Athens and Thessaloniki. This is a theme well suited for this geophysical conference as we all try to discover something; it may be a theory or method, a new way of thinking, a new fact of nature and ultimately leading to a discovery of some valuable resources.

The word 'Eureka' in the early part of Australian history is associated with the rebellion by the gold mine workers in Ballarat, just 100 km to the west of Melbourne, in 1854. They built the 'Eureka' stockade and battled against the severe mining license law imposed by the colonial government, and won. According to the official website of the Australian Government 'The Eureka rebellion is

considered by some historians to be the birthplace of Australian democracy. It is the only Australian example of armed rebellion leading to reform of unfair laws.' (<http://australia.gov.au/about-australia/australian-story/eureka-stockade>). Thus, 'Eureka' relates to the mining industry, providing relevance to our conference.

The technical sessions are held in five concurrent sessions on two days and six on the second day. The topics are well balanced with minerals and energy exploration and other applications of geophysics including geothermal, environmental and engineering.

The ASEG enjoys the reputation of excellence in minerals exploration techniques backed by Australia's rich mineral resources. Australia is also rich in coal and petroleum resources. The ASEG's journal *Exploration Geophysics* is now jointly published with our Japanese and Korean colleagues. With their contribution, it is expanding its scope to a new horizon of application of geophysics to engineering and environmental geophysics. This conference certainly reflects this new frontier.

A large number of delegates all over the world are coming to Melbourne. They include experts in different fields of geophysics both from academia and industry, leaders of exploration and production companies, geophysicists with various levels of experience and students at the first step into geophysics. The conference provides an opportunity

to meet each other, discuss technical problems and start business dealings. I hope the delegates establish new ties or renew old contacts leading to successful joint projects among them.

In closing, I thank all the people who make this conference possible: the presenters, workshop presenters, keynote speakers, session chairmen, exhibitors, sponsors, organisers and all the delegates, local, interstate and international. Thanks is also due, of course, to the conference organising committee members. I wish that you all enjoy the conference by learning new techniques and products, meeting new and old colleagues, and hope you take nuggets of fond memories of the ASEG Conference in Melbourne.



Koya Suto  
*President*  
*Australian Society of Exploration*  
*Geophysicists*





The ASEG-PESA 2013 Conference Organising Committee wishes to acknowledge the following sponsors for their contribution to the Conference and continuing support of the industry

#### Platinum Sponsor



WesternGeco, a Schlumberger company, is the world's leading geophysical services company, providing comprehensive worldwide reservoir imaging, monitoring, and development services. Our geophysical data acquisition crews and WesternGeco GeoSolutions centers are spread across the globe and we offer the industry's most extensive multiclient data library.

Within Australia and New Zealand, all WesternGeco services are supported by a WesternGeco GeoSolutions centre in

Perth, providing superior subsurface imaging solutions and tailored problem-solving through a co-located regional technology hub. An experienced Multiclient team operates throughout the region providing the industry a rich Multiclient portfolio.

Most recently, WesternGeco completed New Zealand's first broadband multiclient marine seismic survey covering over 4000 km<sup>2</sup> of non-operated acreage in the Taranaki Basin.

Schlumberger is the world's leading supplier of technology, integrated project management and information solutions to customers working in the oil and gas industry worldwide. Employing approximately 120,000 people representing over 140 nationalities and working in more than 85 countries, Schlumberger provides the industry's widest range of products and services from exploration through production. Schlumberger Limited has principal offices in Paris, Houston and The Hague, and reported revenues of \$42.15 billion in 2012.

#### Gold Sponsors



CGG is a fully integrated Geoscience company providing leading geological, geophysical and reservoir capabilities to its broad base of customers primarily from the global oil and gas industry. Through its three complementary business divisions of Equipment, Acquisition and Geology, Geophysics & Reservoir (GGR), CGG brings value across all aspects of natural resource exploration and exploitation.

CGG employs 10,000 people around the world, all with a Passion for Geoscience and working together to deliver the best solutions to its customers.

## RioTinto

Rio Tinto Exploration is a global operation dedicated to discovering new mineral resources to replace and/or supplement those already mined by the Rio Tinto Group. We have had a sustained commitment to exploration for almost 70 years and consider it to be one of our leading capabilities.

Rio Tinto Exploration is organised into four regional teams: Americas, Australasia, Africa-Europe and Eurasia. In addition, the Project Generation Group (PGG) provides specialist commodity, data and information, technical and ore body knowledge assistance to the regional teams. PGG also plays a role in coordinating research programs, the global commodity portfolios and liaising with the various parts of Rio Tinto. This structure provides a global reach and a local presence that allows for effective community engagement.

At the beginning of 2013, the Exploration group employed around 500 people (representing more than 35 nationalities). It was operating in over 20 countries and assessing opportunities in many others for a broad range of commodities. These include bauxite, copper, coking coal, iron ore, nickel and uranium.

For more information, refer to the following document:  
[http://www.riotinto.com/documents/RT\\_Exploration\\_brochure.pdf](http://www.riotinto.com/documents/RT_Exploration_brochure.pdf)

## Silver Sponsors



Anglo American is one of the world's largest mining companies. Our portfolio of high-quality mining assets and natural resources spans bulk commodities – iron ore and manganese, metallurgical coal and thermal coal; base metals – copper and nickel; and precious metals and minerals – in which it is a global leader in both platinum and diamonds. We operate in Africa, Europe, South and North America, Australia and Asia. In Australia, Anglo American's Metallurgical Coal business is one of Australia's largest producers and exporters of metallurgical coal, with extensive coal mining interests in Queensland and New South Wales. We are committed to creating value from all our commodities safely and responsibly, growing our business through our attractive project pipeline and investing in the communities in which we operate.



PGS operates the most advanced fleet of seismic vessels and towed streamer technology in the industry. The recently launched Titan-class Ramform vessels are 70 metres wide at the stern, providing the safest and most efficient platform for seismic acquisition. Built as a complement to our revolutionary dual-sensor GeoStreamer technology, Titan-class Ramforms will enhance PGS' leadership in performance in the world's most challenging offshore environments. Coupled with our leading-edge data processing and imaging techniques, PGS helps our customers reduce hydrocarbon discovery and recovery risks with the most efficient and high-quality technology-based solutions.



Australia is founding its future on science and innovation. Its national science agency, CSIRO, is a powerhouse of ideas, technologies and skills for building prosperity, growth, health and sustainability. It serves governments, industries, business and communities across the nation.

CSIRO's geophysics capabilities are deployed in cutting edge research for:

- mineral exploration
- increasing recovery rates of oil and gas reservoirs
- monitoring and verification of carbon dioxide storage
- geological modelling of sedimentary sequences for exploration

Talk to us today to find out how partnering with CSIRO's geophysical expertise can give your company the competitive edge in innovation.



Lockheed Martin is taking a big-picture approach to solving global energy and climate challenges – working solutions in the areas of energy efficiency and smart management, to alternative power generation and climate monitoring. With one of the most comprehensive alternative energy portfolios in the industry, our foundation is the decades of relevant experience and innovating minds to help address these challenges. We are partnering with customers and investing our talent in clean, secure, and smart energy – supporting global security, a strong economic future, and climate protection for future generations.



Earth scientists explore and make discoveries through data. Geosoft's mission is to make the explorer data experience simple, natural and powerful. Our promise is less time spent handling data and more freedom to explore. Every software solution we create and service we provide is focused on helping explorers keep pace with the demands of their data world. After twenty-five years, with offices across five continents, and a network of international business partners, Geosoft services thousands of organisations, including government geological surveys and agencies, educational institutions teaching the earth sciences, and the most successful oil and mineral explorers in the world.



Beach Energy Limited ('Beach') is an ASX100-listed oil and gas exploration and production company based in Adelaide, South Australia. Beach has interests in more than 300 exploration and production tenements globally, including Australia, Egypt, Tanzania, Romania, New Zealand and the USA. Forecast production for FY13 is between 8.1 and 8.5 million barrels of oil equivalent ('MMboe'). At the end of FY12, 2P reserves were 93 MMboe and 2C resources were 467MMboe. In 2013, the Beach drilling program incorporates both conventional and unconventional targets, including the deep onshore gas play in the heart of the Cooper Basin, which Beach estimates could contain in excess of 300Tcf of gas in place.



**Bronze Sponsors**

Velseis Pty. Ltd. is a highly experienced Australian seismic contractor, offering fully integrated seismic services to the petroleum, coal and mineral industries locally, as well as overseas.

Providing comprehensive 2D and 3D seismic acquisition services, Velseis utilises dynamite, Mini-SOSIE and Vibroseis techniques (Envirovibe and Univib). Besides these conventional techniques, they can also provide logistics for multi-component, heli-portable, and shallow marine data as well as providing a specialised shothole drilling service through its Seisdrill division. With a highly experienced seismic processing division, Velseis delivers high-quality 2D and 3D onshore, transition and marine processing services to the petroleum and coal sectors. Velseis maintains its competitiveness with a proactive commitment to research and development. The R&D division engages in focussed research projects, and provides technical support to production divisions.

Contact: [www.velseis.com.au](http://www.velseis.com.au) or Ph: +61 7 3376 5544

Acquisition: [mreveigh@velseis.com.au](mailto:mreveleigh@velseis.com.au)

Processing: [kdriml@velseis.com.au](mailto:kdriml@velseis.com.au)



AngloGold Ashanti Ltd. is the world's third largest producer of gold with 20 operations in 10 countries. Headquartered in South Africa, the company is listed on the Johannesburg, New York, London and Ghana Stock Exchanges and the Australian Securities Exchange.

The company employs approximately 60,000 people globally and produces more than 4 million ounces per annum. Its well-funded, industry-leading exploration team continues to focus on making significant, high-value gold discoveries in the existing and emerging gold regions of the world.

AngloGold Ashanti's gold operations span surface and underground mines in the Americas, South Africa, Continental Africa and Australia. Approximately 54% of the company's gold production comes from underground operations, and the company's Mponeng mine in South Africa is the world's deepest, with mining taking place at 3,900 metres below surface.

In Australia, AngloGold Ashanti operates the Sunrise Dam Gold Mine, near Laverton in Western Australia, and the Tropicana Gold Mine (AGA 70% and manager, Independence Group NL 30%), 330 kilometres east-northeast of Kalgoorlie in WA, which is scheduled to pour first gold in the December quarter 2013. Discovered in 2005, in a region not previously considered

prospective for gold, Tropicana is the most significant Australian greenfields gold discovery of the past decade.

The new mine is expected to produce up to 490,000 ounces per annum in its first three years of operation. As at 30 December 2012, the Mineral Resource\* totalled 7.89 million ounces of gold.

Driven by its vision to be the leading mining company, AngloGold Ashanti's mission is to create value for its shareholders, its employees and its business and social partners through safely exploring, mining and marketing its products.

The company has five core strategies to grow and create wealth sustainably: people are the business, maximise margins, manage the business as an asset portfolio, grow the business and embrace sustainability principles. Recognising that the process used to achieve results is as important as the results themselves, AngloGold Ashanti's activities are governed by its values:

- Safety is our first value.
- We treat each other with dignity and respect.
- We value diversity.
- We are accountable for our actions and undertake to deliver on our commitments.
- The communities and societies in which we operate will be better off for AngloGold Ashanti having been there.
- We respect the environment.

These elements underpin Project ONE, the company's business framework, which is a consistent operating model that reaches every corner of the organisation, bringing together people and technical systems to realise AngloGold Ashanti's vision. This operating model defines the technical, commercial and social aspects of the business and prescribes how they interact in order to deliver the company's business goals. Project ONE provides a framework to ensure consistency and efficiency in all processes with the aim of enhancing operating performance and control.

For more information about AngloGold Ashanti Ltd, please visit the company's website at [www.anglogoldashanti.com](http://www.anglogoldashanti.com)

\*For full details of the JORC-compliant Mineral Resource Estimate see AngloGold Ashanti's announcement of 4 December 2012, which is available at [www.anglogoldashanti.com](http://www.anglogoldashanti.com).



BP is a global energy company that provides its customers with fuel for transportation, energy for heat and light, petrochemicals products, and retail services. In Australia, BP is exploring for oil and gas in the Great Australian Bight; is a foundation participant in the North West Shelf Venture; is developing resources in the Browse and Greater Gorgon areas; and is a leading refiner and marketer of fuels and lubricants.

## Bronze Sponsors



**Government of South Australia**  
Department for Manufacturing,  
Innovation, Trade, Resources and Energy

The Resources and Energy Group, is part of the South Australian Government's Department of Manufacturing, Innovation, Trade, Resources and Energy (DMITRE). It provides a wide range of regulatory, promotional and advisory services to the minerals, mining, petroleum and geothermal industries. This includes gathering and value-added geoscientific datasets for delivery to the exploration industry and wider public. Many databases – including geophysical data – can be accessed and downloaded via the South Australian Resources Information Geoserver (SARIG: <https://sarig.pir.sa.gov.au/>).



Founded in 1975 in Toronto, Canada, Phoenix Geophysics is the world leader in onshore electromagnetic (EM) geophysical instrumentation and services. Phoenix has exported both natural-source (MT/AMT) and controlled-source (CSEM) equipment to over 80 countries. The Phoenix booth will provide information on MT, AMT, CSAMT, TDEM, FDEM, TDIP and FDIP equipment and software.

## USB Sponsor



→ Charged to innovate. Driven to solve.™

ION provides geophysical technology, services, and solutions to global oil and gas companies and seismic contractors. ION's offerings include advanced acquisition equipment, software, planning and processing services, and seismic data libraries.

**EARTH SCIENCE AND RESOURCE ENGINEERING**  
[www.csiro.au](http://www.csiro.au)



Australia is founding its future on science and innovation. Its national science agency, CSIRO, is a powerhouse of ideas, technologies and skills for building prosperity, growth, health and sustainability. It serves governments, industries, business and communities across the nation.

## Geophysics

CSIRO's geophysics capabilities perform a number of activities to aid in:

- ♦ mineral exploration
- ♦ increasing recovery rates of oil and gas reservoirs
- ♦ monitoring and verification of carbon dioxide storage
- ♦ geological modelling of sedimentary sequences for exploration

These capabilities and activities include:

- ♦ seismic and microseismic surveys
- ♦ electromagnetic surveys
- ♦ magnetic and gravity studies

- ♦ experimental rock physics
- ♦ superconducting quantum interference devices (SQUIDS)
- ♦ testing rock properties via the Rock Mechanics and Petrophysics laboratories
- ♦ contributing to research for the Centre of Excellence for 3D Mineral Mapping and Deep Exploration Technologies Cooperative Research Centre
- ♦ developing new models to quantify and predict rock behaviour

Talk to us today to find out how partnering with CSIRO's geophysical expertise can give your company the competitive edge in innovation.

**For more details visit our booth at ASEG-PESA, contact: [ryan.noble@csiro.au](mailto:ryan.noble@csiro.au) (Mineral Exploration) or [ben.clennell@csiro.au](mailto:ben.clennell@csiro.au) (Oil and Gas Exploration), or visit [www.csiro.au/cesre](http://www.csiro.au/cesre)**



## Plenary Room

Plenary One (access via ground level)



## Session Rooms, Catering and Exhibition

Level Two



## Conference Venue

Melbourne Convention and Exhibition Centre  
1 Convention Centre Place  
South Wharf, VIC 3006, Australia  
Phone: +61 3 9235 8000  
Website: [www.mcec.com.au](http://www.mcec.com.au)

---

## Conference and Exhibition Managers



23rd International Geophysical Conference and Exhibition Managers

**arinex** Pty Limited  
91–97 Islington Street  
Melbourne, VIC 3066, Australia  
Phone: +61 3 9417 0888  
Fax: +61 3 9417 0899  
Email: [aseg-pesa2013@arinex.com.au](mailto:aseg-pesa2013@arinex.com.au)  
Website: [www.aseg-pesa2013.com.au](http://www.aseg-pesa2013.com.au)

**arinex** Pty Limited has been appointed as the official PCO (Professional Conference Organiser) and looks forward to delivering an inspiring experience for **ASEG-PESA 2013**.

---

## Conference and Exhibition Dates

Sunday 11 – Wednesday 14 August 2013

---

### Registration Desk

The Registration Desk is located in Level 2 foyer of the Melbourne Convention Centre and will be operating on the following dates and times:

Sunday 11 August 2013	1300–1800
Monday 12 August 2013	0700–1800
Tuesday 13 August 2013	0730–1800
Wednesday 14 August 2013	0730–1800

---

### Registration Entitlements

#### Full Registrations

- Entry to all sessions excluding workshops
- Entry to Trade Exhibition
- All official documentation including programme book, extended abstract CD-ROM
- Welcome reception
- Morning and afternoon tea
- Lunches
- Satchel
- Happy Hour receptions

#### Day Registrations

- Entry to all sessions on the day registered excluding workshops
- Entry to Trade Exhibition on the day registered
- All official documentation including programme book, extended abstract CD-ROM

- Morning and afternoon tea on the day registered
- Lunch on the day registered
- Satchel
- Happy Hour reception on the day registered

#### Student Registration

- Entry to all sessions excluding workshops
- Entry to Trade Exhibition
- All official documentation including programme book, extended abstract CD-ROM
- Morning and afternoon tea
- Lunches
- Satchel

#### Exhibition Staff/Complimentary Exhibitor Delegate

- Entry to all sessions excluding workshops
- Entry to Trade Exhibition
- Name badge
- All official documentation including programme book, extended abstract CD-ROM
- Welcome reception
- Morning and afternoon tea
- Lunches
- Satchel
- Happy Hour receptions

#### Complimentary Exhibitor Pass and Additional Exhibitor Pass

- Entry to Trade Exhibition
  - Name badge
  - Welcome reception
  - Morning and afternoon tea
  - Lunches
  - Happy Hour receptions
  - Entry to sessions NOT INCLUDED
- 

### Name Badges

Each delegate registered for the Conference and Exhibition will receive a name badge at the Registration Desk. This badge will be your official pass and must be worn to obtain entry to all sessions, the exhibition and social functions.

---

### Speakers Preparation Room

The Speaker Preparation Room is located in Speaker Room 201, Level 2 of the Melbourne Convention Centre. All speakers will have access to the Speaker Preparation Room on the following days and times:

Sunday 11 August 2013	1500–1800
Monday 12 August 2013	0700–1800
Tuesday 13 August 2013	0700–1800
Wednesday 14 August 2013	0700–1800

Speakers must visit the Speakers Preparation Room at least 24 hours prior to the start of their session to ensure their presentation(s) are loaded successfully.

---

### Poster Presentations

Posters will be displayed in the Level 2 Foyer, adjacent to the Session Rooms. Posters will be displayed for the duration of the Conference and Exhibition.

---



## Messages

All messages received during the Conference and Exhibition will be placed on the Message Board located next to the Registration Desk. To collect or leave messages please visit the Registration Desk.

## Catering

Morning tea, lunch and afternoon tea will be served in the Exhibition Hall, Melbourne Rooms 1 and 2. Catering will be served at the following dates and times:

### Monday 12 August 2013

Morning Tea	1030–1100
Lunch	1230–1330
Afternoon Tea	1500–1530

### Tuesday 13 August 2013

Morning Tea	1030–1100
Lunch	1230–1330
Afternoon Tea	1500–1530

### Wednesday 14 August 2013

Morning Tea	1030–1100
Lunch	1230–1330
Afternoon Tea	1530–1600

## Special Dietary Requirements

If you have notified the Conference and Exhibition Managers of any special dietary requirements, please be advised that this information has been supplied to the Melbourne Convention and Exhibition Centre. It is requested that you make yourself known to the venue catering staff during meal breaks.

## Internet Centre

*Proudly sponsored by AngloAmerican*



The Internet Centre will be located in the Level 2 foyer, directly outside the Exhibition Hall, for delegates to use throughout the Conference and Exhibition. The Internet Centre will operate during the following dates and times:

Sunday 11 August 2013	1700–1900
Monday 12 August 2013	0830–1830
Tuesday 13 August 2013	0830–1830
Wednesday 14 August 2013	0830–1600

## Internet Wireless

In addition to the Internet Centre all delegates have access to the Melbourne Convention and Exhibition Centre free wireless internet service. The free service allows basic Internet and Email access. Corporate VPN or services such as Skype are not possible on the free service.

To connect to this free service, choose the wireless network called 'MConnect' from the wireless networks list. Then start a web browser session and accept the terms and conditions to start browsing.

## Photography

By registering to attend ASEG-PESA 2013 you grant the Conference Organising Committee permission to both photograph and video record you during Conference and Exhibition activities.

This footage may be used in relation to future ASEG Conference and Exhibitors and for ASEG usage.

## Disclaimer

The Conference and Exhibition Managers, the Conference Organising Committee, ASEG and PESA will not accept liability for damages of any kind sustained by participants or their accompanying persons or loss of or damage to their personal property as a result of the conference or related events. The conference programme is correct at the time of printing, although the Conference and Exhibition Managers reserve the right to make necessary change to programming. Receipt of delegate registration acts as acceptance of this disclaimer. Some scheduled events are subject to minimum numbers and we reserve the right to amend or cancel the proposed events if minimum numbers are not met.

## Privacy Statement

Australia introduced the Privacy Amendment (Private Sector) Act 2000 in 2001. The Conference and Exhibition Managers comply with this legislation, which is designed to protect the right of the individual to privacy of their information. Information collected in respect of proposed participation in any aspect of the Conference and Exhibition will only be used for the purposes of planning and conduct of the Conference and Exhibition and may also be provided to the organising body or to organisers of future events. It is also usual to produce a 'Participant/Delegate List' of attendees at the Conference and Exhibition and to include the individual's details in such a list. Consent for publication of the individual's information has been withheld when completing the Registration Form for the Conference and Exhibition.

## Accommodation

Below are the addresses, telephone and fax numbers of all official Conference Hotels.

Following is a map of the Melbourne CBD to help you find your hotel. Enquiries concerning accommodation can be made at the Registration Desk.

### **Hilton Melbourne, South Wharf**

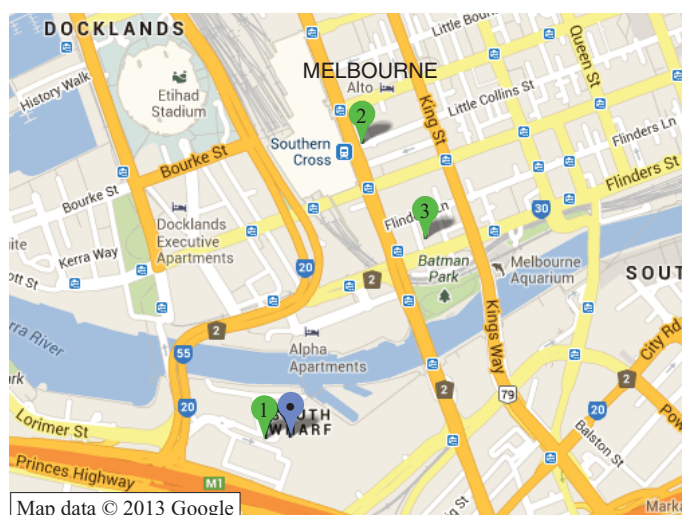
2 Convention Centre Place  
South Wharf, VIC 3006, Australia  
Phone: +61 3 9027 2000

### **Vibe Savoy Melbourne**

630 Little Collins Street  
Melbourne, VIC 3000, Australia  
Phone: +61 3 9622 8888

### **Adina Apartment Hotel Melbourne** (formally Medina

Executive Northbank)  
550 Flinders Street  
Melbourne, VIC 3006, Australia  
Phone: +61 3 9246 0000



**Melbourne Convention and Exhibition Centre**

## Public Transport

Melbourne's public transport ticketing system allows multiple journeys using the complete Myki transport network. Tickets are known as Mykis and provide flexible travel on trains, trams and buses. Check maps located at stations, tram stops and on transport to match your ticket to your journey. Mykis can be purchased at major train stations, selected tram stops within the CBD and at 7-11s. Visit [www.myki.com.au](http://www.myki.com.au) for more information.

### Tram

Tram numbers 96, 112 and 109 travel down Spencer/Clarendon streets and stop opposite the Clarendon Street entrance of the Melbourne Convention and Exhibition Centre.

Tram numbers 48 and 70 stop at the end of Flinders Street. Walk towards the Yarra River, across the new pedestrian bridge.

### Train

Take the train to Southern Cross Station. Tram numbers 96, 109 and 112 travel past Southern Cross Station down Spencer/Clarendon Streets and stop opposite the Melbourne Convention and Exhibition Centre.

### Bus

The SkyBus transports visitors direct from Melbourne Airport to Southern Cross Station.

MCEC is a 10 minute walk from the station or catch tram 96, which stops opposite the Clarendon Street entrance of the Melbourne Convention and Exhibition Centre. Bus route 238 operates to and from Southern Cross Station to the Convention

Centre Place between the hours of 10:00am – 3:00pm, Monday to Friday. The coach pick-up/drop-off point is coach bay 1, Convention Centre Place (closest to DFO South Wharf). Visit <http://ptv.vic.gov.au> for timetable information.

## Parking

### Melbourne Convention and Exhibition Centre

1060 undercover parking spaces managed by Wilson Parking.

Entrance and exit off Normanby Road.

Open 24 hours, 7 days a week.

#### Fees:

0.0–1.0 hour	\$9.00
1.0–2.0 hours	\$18.00
2.0–3.0 hours	\$27.00
3.0–4.0 hours	\$36.00
4.0+ hours	\$36.00 max
Lost ticket	\$50.00

Evening rate, Monday to Thursday: \$12.00, entry from 6:00pm and exit before 6:00am.

Evening rate, Friday: \$14.00, entry from 6:00pm and exit before 6:00am.

Weekend rate: \$14.00, per exit, per day.

Early bird rate: \$13.00, enter between 6:00am–9:00am and exit between 3:00pm–midnight Monday–Friday.

Please note: All MEC car park patrons will be directed to car park Door 1 during overnight closure (8:00pm–6:00am), to access the external areas of the precinct.

### South Wharf

550 open-air parking spaces managed by Wilson Parking.

Entrance off Normanby Road.

Open 24 hours, 7 days a week.

#### Fees:

0.0–1.0 hour	\$4.00
1.0–2.0 hours	\$8.00
2.0–3.0 hours	\$12.00
3.0–4.0 hours	\$16.00
4.0–5.0 hours	\$20.00
5.0–6.0 hours	\$24.00
6.0+ hours	\$28.00 max
Lost ticket	\$50.00

Evening rate: \$8.00, entry after 6:00pm and exit before 6:00am.