

Supplementary Materials

Stock structure of Pacific cod (*Gadus macrocephalus*) around the Korean Peninsula: an otolith microchemical perspective

Kali R. Stone^{A,C}, *Craig R. Kastle*^A, *Irina M. Benson*^A, *Thomas E. Helser*^A, *Jonathan A. Short*^A
and Sukyung Kang^B

^AResource Ecology and Fisheries Management Division, Alaska Fisheries Science Center, National Marine Fisheries Service, National Oceanic and Atmospheric Administration, 7600 Sand Point Way NE, Seattle, WA 98115, USA.

^BFisheries Resources Management Division, National Fisheries Research and Development Institute, 216 Gijanghaean-ro, Gijang-eup, Gijang-gun, Busan 46083, South Korea.

^CCorresponding author. Email: kali.stone@noaa.gov

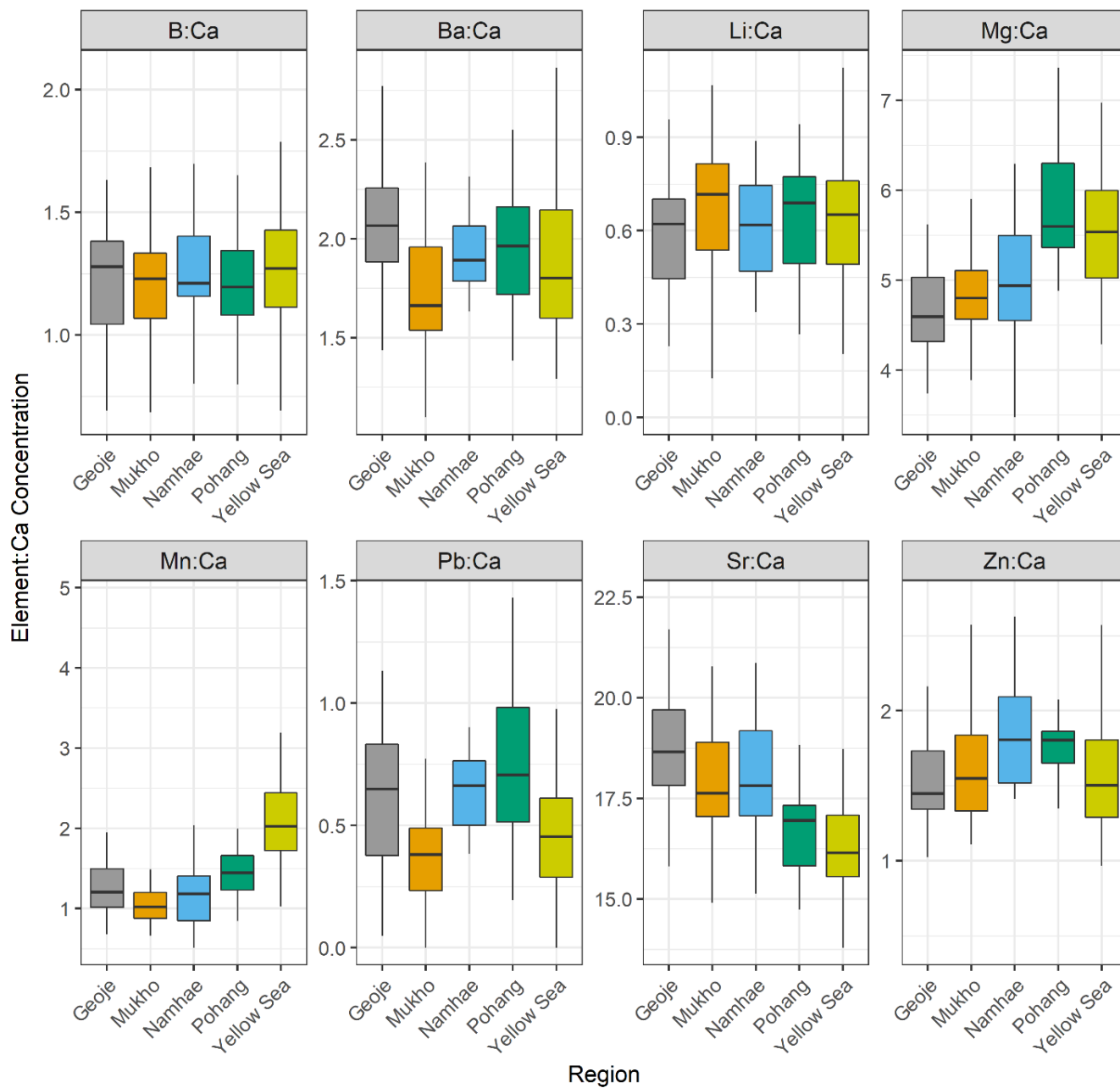


Fig. S1. Original otolith edge element : Ca concentrations by region. Original elemental data ($\mu\text{g element} : \text{g Ca}$) has been cube-root transformed and multivariate outliers in the transformed elemental data were identified and excluded by using Q-Q plots to compare estimated Mahalanobis distances for the sample to theoretical values from a chi-squared distribution. Elemental data has not been mean centred or scaled.

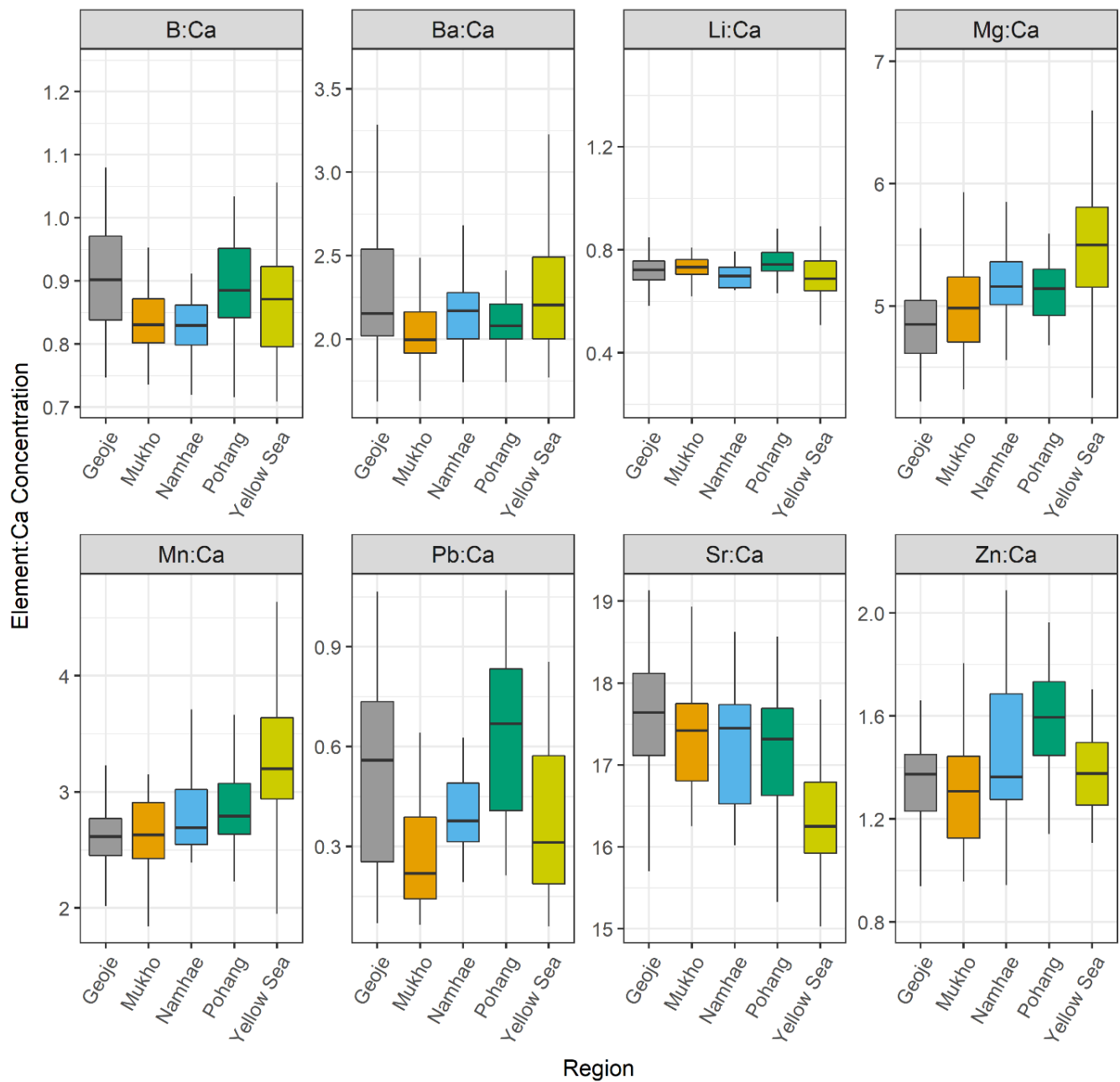


Fig. S2. Original element : Ca concentrations of the otolith region corresponding to the age-0 spring–summer signatures (i.e. the average of otolith track sections 0B and 0C). Original elemental data (μg element : g Ca) has been cube-root transformed and multivariate outliers in the transformed elemental data were identified and excluded by using Q-Q plots to compare estimated Mahalanobis distances for the sample to theoretical values from a Chi-Square distribution. Elemental data has not been mean centred or scaled.

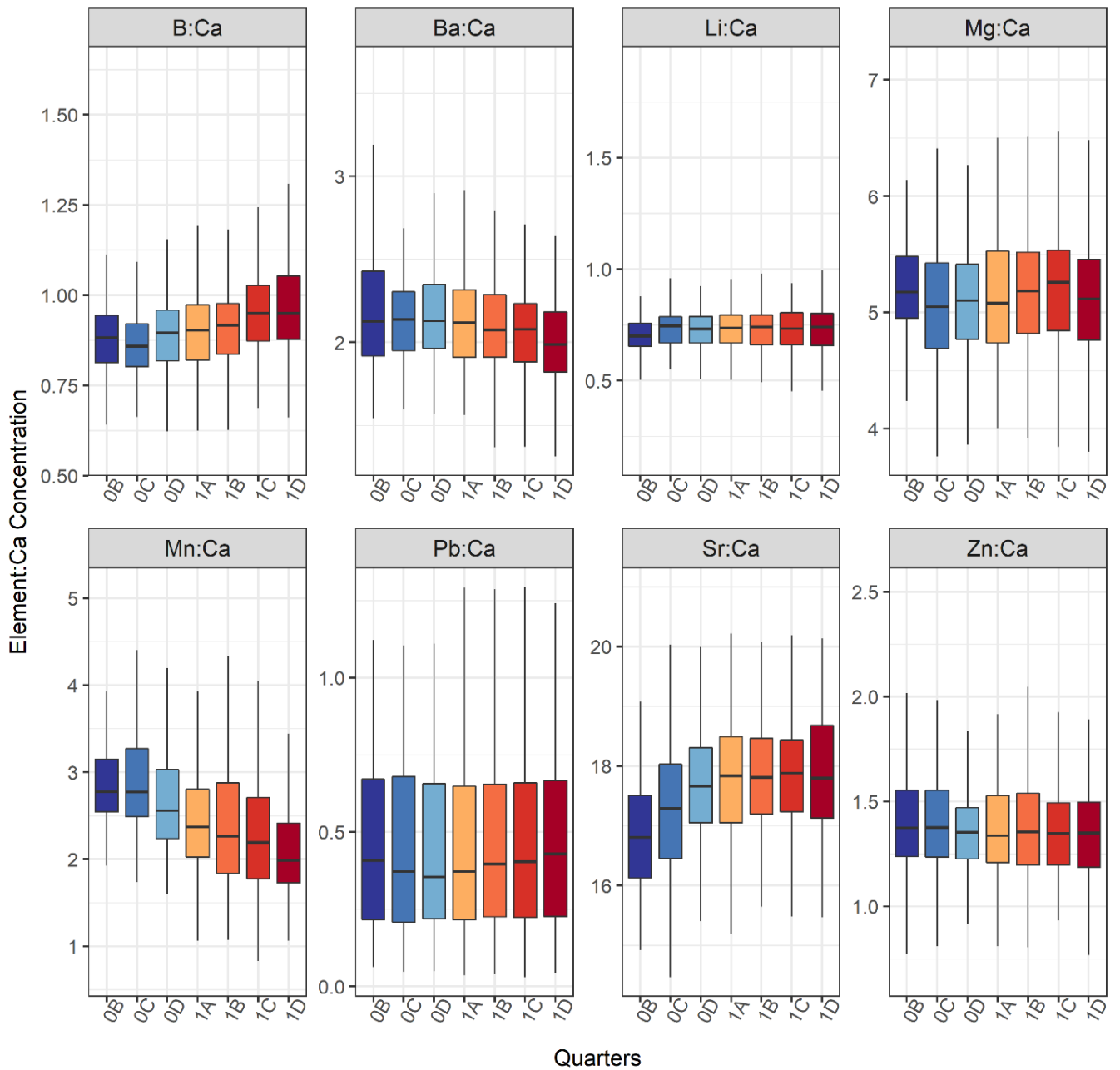


Fig. S3. Original otolith element : Ca concentrations during the first two years of life (i.e. otolith sections 0B-1D) for all specimens and regions. Original elemental data ($\mu\text{g element} : \text{g Ca}$) has been cube-root transformed and multivariate outliers in the transformed elemental data were identified and excluded by using Q-Q plots to compare estimated Mahalanobis distances for the sample to theoretical values from a chi-squared distribution. Elemental data has not been mean centred or scaled.