

## Supplementary Material

### Environmental influences on the larval recruitment dynamics of snapper, *Chrysophrys auratus* (Sparidae)

Carina J. Sim-Smith<sup>A,B</sup>, Andrew G. Jeffs<sup>A</sup> and Craig A. Radford<sup>A</sup>

<sup>A</sup>Leigh Marine Laboratory, University of Auckland, PO Box 349, Warkworth, New Zealand.

<sup>B</sup>Corresponding author. Email: sim-smith@clear.net.nz

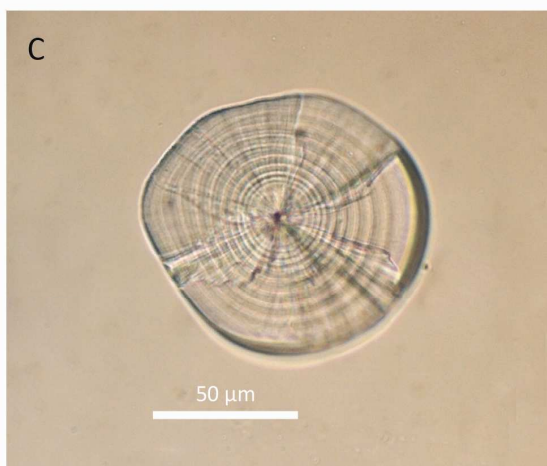
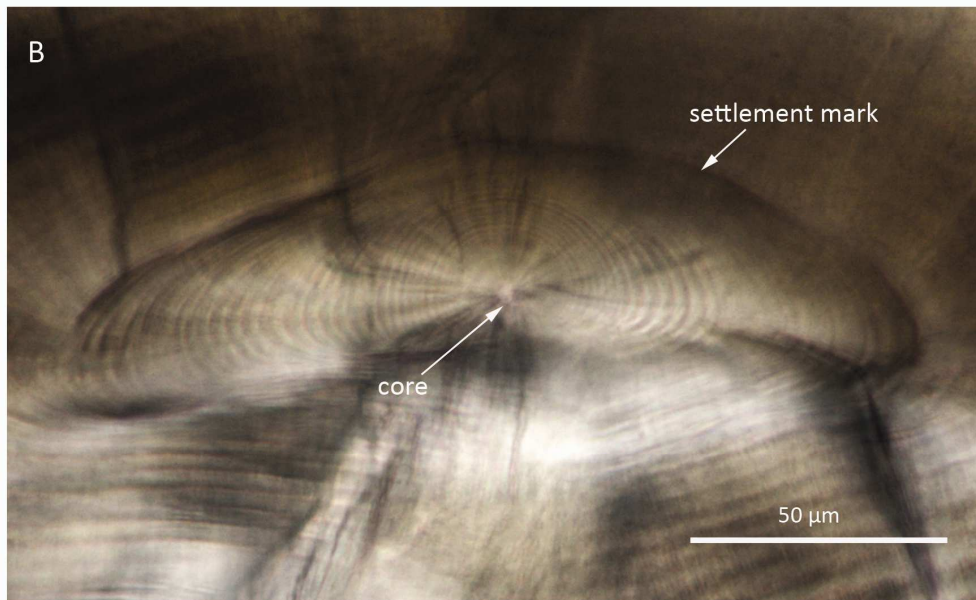
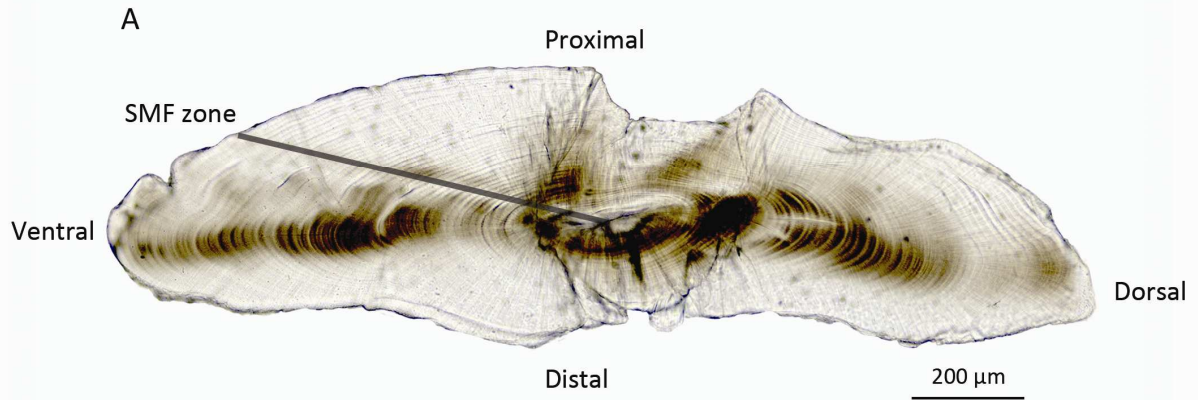
**Table S1. Daily means  $\pm$  S.E., minima and maxima of environmental variables from November 2009 to March 2010 in the Kaipara, Huruhi, Manukau and Mahurangi Harbours, and from November 2010 to March 2011 in the Kaipara and Huruhi Harbours**

Variable	Year	Harbour	Mean $\pm$ S.E.	Minimum	Maximum		
SST ( $^{\circ}$ C)	2009/2010	Kaipara	19.0 $\pm$ 0.1	15.8	20.6		
		Huruhi	19.1 $\pm$ 0.2	15.4	21.8		
		Manukau	18.7 $\pm$ 0.1	14.8	21.2		
		Mahurangi	19.4 $\pm$ 0.2	15.6	21.9		
	2010/2011	Kaipara	19.2 $\pm$ 0.1	15.3	21.2		
		Huruhi	19.7 $\pm$ 0.2	15.5	22.3		
		Rainfall (mm day <sup>-1</sup> )	2009/2010	Kaipara	1.6 $\pm$ 0.6	0	79.9
				Huruhi	2.7 $\pm$ 0.9	0	121.8
Manukau	2.0 $\pm$ 0.4			0	33.3		
Mahurangi	1.9 $\pm$ 0.6			0	73.0		
2010/2011	Kaipara	3.5 $\pm$ 1.2	0	116.2			
	Huruhi	7.0 $\pm$ 2.1	0	219.6			
Radiation (MJ m <sup>-2</sup> )	2009/2010	Kaipara	21.8 $\pm$ 0.5	3.9	33.3		
		Huruhi	21.4 $\pm$ 0.6	3.0	35.4		
		Manukau	21.6 $\pm$ 0.6	3.5	34.2		
		Mahurangi	20.3 $\pm$ 0.5	4.0	31.1		
	2010/2011	Kaipara	21.2 $\pm$ 0.6	3.8	33.9		

Wind speed ( $\text{m s}^{-1}$ )	2009/2010	Huruhi	$21.9 \pm 0.7$	3.0	34.9
		Kaipara	$4.2 \pm 0.1$	0.5	13.6
		Huruhi	$5.6 \pm 0.1$	0.3	15.7
	2010/2011	Manukau	$5.1 \pm 0.1$	0.1	12.6
		Mahurangi	$4.2 \pm 0.1$	0.3	12.0
		Kaipara	$3.8 \pm 0.1$	0.3	19.3
		Huruhi	$5.3 \pm 0.1$	0.3	22.0

---

**Fig. S1.** (A) Thin transverse section of a sagittal otolith from a 49 mm (SL) *C. auratus* showing the position of the SMF zone along which daily increments are counted. (B) High magnification image of the otolith core showing the larval rings and the settlement mark. (C) A sagittal otolith from a 5.9 mm (SL) *C. auratus* larva showing 11 daily rings.



**Fig. S2.** Daily SST for the Kaipara, Huruhi, Manukau and Mahurangi Harbours between October and March 2009/2010, and for the Kaipara and Huruhi Harbours between October and March 2010/2011.

