

Supplementary Material

Wheat *TaLr35PR2* gene is required for *Lr35*-mediated adult plant resistance against leaf rust fungus

Fang Liang^{A,*}, Xiong Du^{B,*}, Jiarui Zhang^A, Xiaoying Li^A, Fei Wang^A, Haiyan Wang^{A,C,*} and Daqun Liu^A

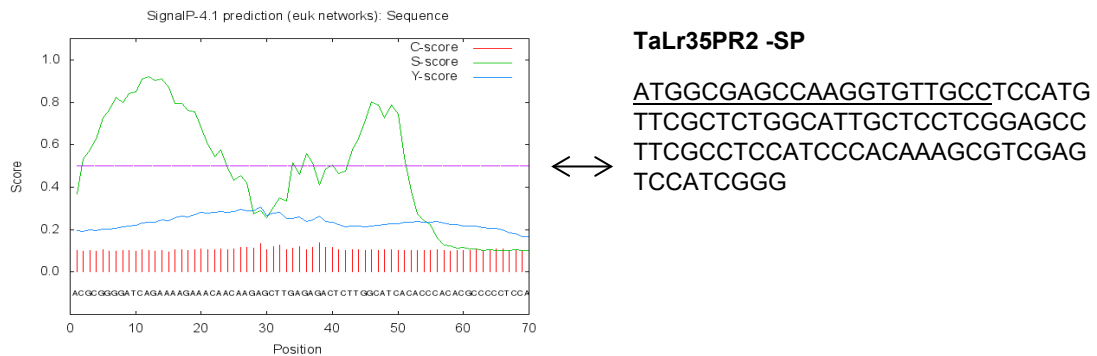
^ACentre of Plant Disease and Plant Pests of Hebei Province, College of Plant Protection, Hebei Agricultural University, Baoding 071001, China.

^BCollege of Agronomy, Hebei Agricultural University, Baoding 071001, China.

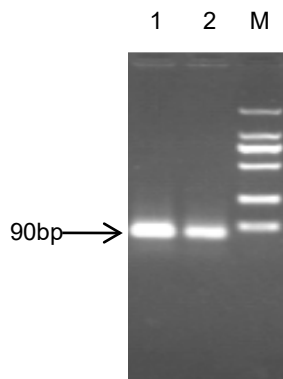
^CCorresponding author. Email: ndwanghaiyan@163.com.

*These authors contributed equally to this work

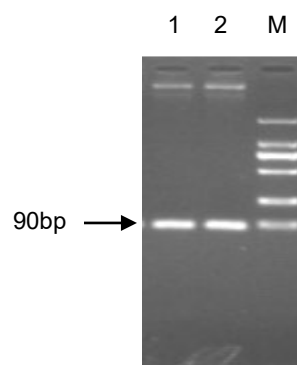
File S1. Supplementary Figs. 1–6.



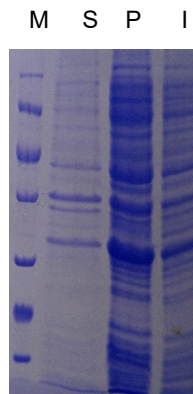
Supplemental Fig.1. Signal peptide predictions for TaLr35PR2



Supplemental Fig.2. PCR products of the signal peptide of TaLr35PR2. M, DL2000 marker; 1, amplified PCR products with an approximate size of 90 bp.

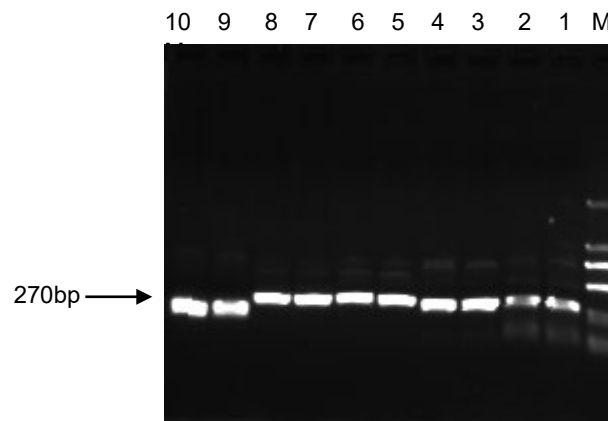


Supplemental Fig.3. The pSUC2::TaLr35PR5-SP plasmid was digested with *XhoI* and *EcoRI*. M, DL2000 marker; 1-2, digested plasmid DNAs. A band of approximately 90 bp is found in lanes 1 and 2, indicating that the fragment of interest is present in the recombinant vector.



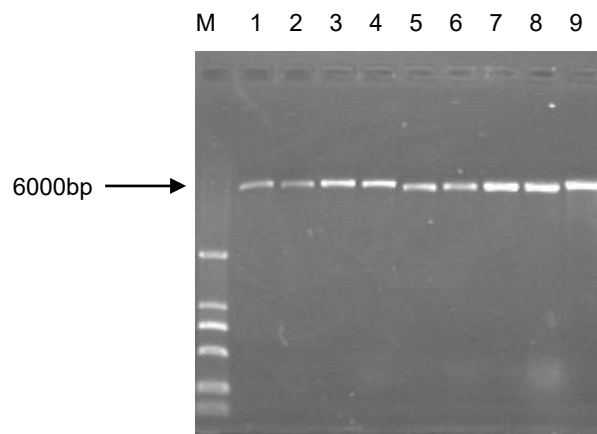
Supplemental Fig.4. Expression of the TaLr35PR2 recombinant protein in *E. coli*

I, induced; S, Supernatant; P, Pellet



Supplemental Fig.5. PCR products of silenced TaLr35PR2 gene fragments.

M, Marker 2000; 1-2, Amplified fragment of V1; 3-4, Amplified fragment of V2; 5-6, Amplified fragment of V3; 7-8, Amplified fragment of V4; 9-10, Amplified fragment of V5



Supplemental Fig.6. Linearized recombinant plasmids

M, Marker 2000; 1-9, Restrictive digestion products of α -, β -, γ -, γ -PDS, γ -V1, γ -V2, γ -V3, γ -V4, and γ -V5 plasmids, respectively.