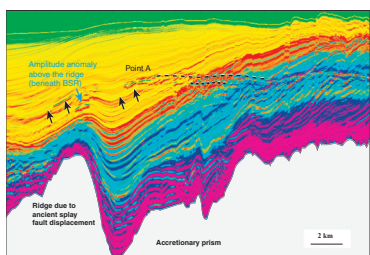
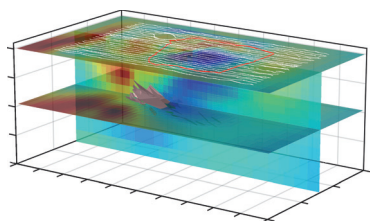
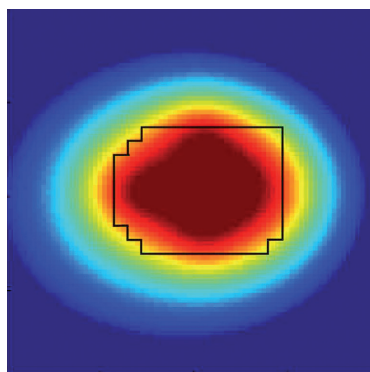


EXPLORATION GEOPHYSICS

www.publish.csiro.au/journals/eg

10.1071/EGv48n2toc



95–109 Electromagnetic exploration in high-salinity groundwater zones: case studies from volcanic and soft sedimentary sites in coastal Japan

Koichi Suzuki, Yukiko Kusano, Ryota Ochi, Nariaki Nishiyama, Tomochika Tokunaga and Kazuhiro Tanaka

110–123 3D inversion of total magnetic intensity data for time-domain EM at the Lalor massive sulphide deposit

Dikun Yang and Douglas W. Oldenburg

124–130 Automatic first-arrival picking based on extended super-virtual interferometry with quality control procedure

Shengpei An, Tianyue Hu, Yimou Liu, Gengxin Peng and Xianghao Liang

131–136 Fast first arrival picking algorithm for noisy microseismic data

Dowan Kim, Joongmoo Byun, Minho Lee, Jihoon Choi and Myungsun Kim

137–150 Gas hydrate saturation and distribution in the Kumano Forearc Basin of the Nankai Trough

Jihui Jia, Takeshi Tsuji and Toshifumi Matsuoka

151–165 3D joint inversion of gravity-gradient and borehole gravity data

Meixia Geng, Qingjie Yang and Danian Huang

166–176 Forward modelling of spectral depths using 3D Fourier convolution

Roger Clifton



Australian Society of Exploration Geophysicists



Society of Exploration Geophysicists of Japan



Korean Society of Earth and Exploration Geophysicists