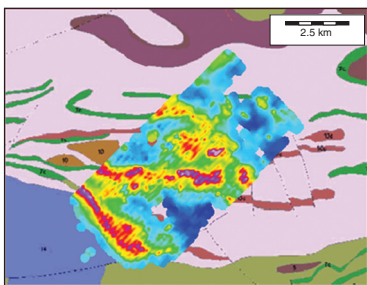
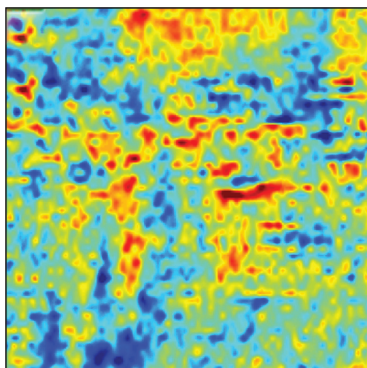
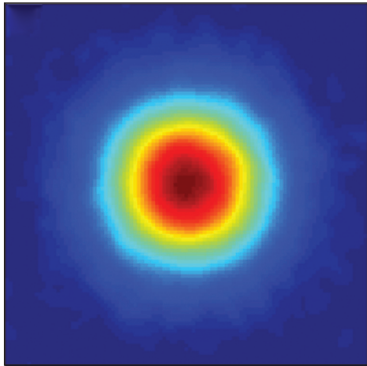


# EXPLORATION GEOPHYSICS

[www.publish.csiro.au/journals/eg](http://www.publish.csiro.au/journals/eg)

10.1071/EGv47n4toc



## *14th SAGA Biennial Conference and Exhibition* *Guest Editors: David Khoza and Reece van Buren*

- 259 14th SAGA Biennial Conference and Exhibition**  
David Khoza and Reece van Buren
- 260–268 Joint inversions of two VTEM surveys using quasi-3D TDEM and 3D magnetic inversion algorithms**  
Vlad Kaminski, Domenico Di Massa and Andrea Viezzoli
- 269–278 Airborne IP: examples from the Mount Milligan deposit, Canada, and the Amakinskaya kimberlite pipe, Russia**  
Andrea Viezzoli and Vlad Kaminski
- 279–284 Airborne EM for mine infrastructure planning**  
Chris Wijns
- 285–289 HELITEM detects the Lalor VMS deposit**  
Greg Hodges, Tianyou Chen and Reece van Buren
- 290–295 The amplitude and phase of the derivatives of the magnetic anomalies of thin dykes and contacts**  
Gordon R. J. Cooper
- 296–301 A new noise reduction method for airborne gravity gradient data**  
Jirigalatu, Jörg Ebbing and Josef Sebera
- 302–307 Towards a global network of gamma-ray detector calibration facilities**  
Marco Tijs, Ronald Koomans and Han Limburg
- Regular Papers*
- 308–314 A simple method for depth determination from self-potential anomalies due to two superimposed structures**  
El-Sayed M. Abdelrahman, Eid R. Abo-Ezz, Tarek M. El-Araby and Khalid S. Essa
- 315–322 Tools used in mineral exploration for measuring the conductivity and the resistivity in drillholes and on drill core: observations on their range of sensitivity**  
Devon Parry, Richard S. Smith and Omid Mahmoodi
- 323–330 An efficient hybrid scheme for fast and accurate inversion of airborne transient electromagnetic data**  
Anders Vest Christiansen, Esben Auken, Casper Kirkegaard, Cyril Schamper and Giulio Vignoli
- 331–340 Joint elastic and petrophysical inversion using prestack seismic and well log data**  
Zhiyong Li, Beibei Song, Jiashu Zhang and Guangmin Hu
- 341–351 Acquisition, processing and interpretation of high-resolution seismic data using a small-scale multi-channel system: an example from the Korea Strait inner shelf, south-east Korea**  
Dong-Geun Yoo, Nam-Hyung Koo, Ho-Young Lee, Byoung-Yeop Kim, Young-Jun Kim and Snons Cheong



Australian Society of Exploration Geophysicists



Society of Exploration Geophysicists of Japan



Korean Society of Earth and Exploration Geophysicists