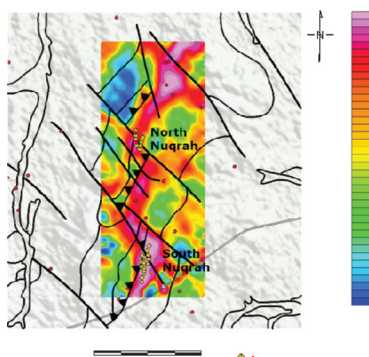
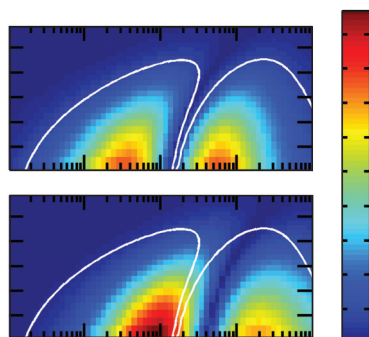
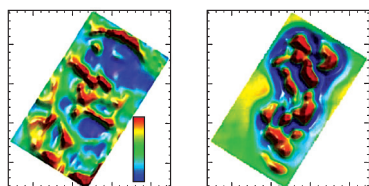
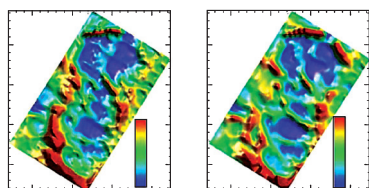


# EXPLORATION GEOPHYSICS

[www.publish.csiro.au/journals/eg](http://www.publish.csiro.au/journals/eg)

10.1071/EGv46n1toc



## Special Issue: 6th International Conference in Airborne Electromagnetics (AEM 2013)

*Guest Editor: Aaron Davis*

- 1–2 6th International Conference in Airborne Electromagnetics (AEM 2013)**  
Aaron Davis
- 3–11 Developing an efficient modelling and data presentation strategy for ATDEM system comparison and survey design**  
Magdel Combrinck
- 12–18 3D-spectral CDIs: a fast alternative to 3D inversion?**  
James Macnae
- 19–26 The analysis of ZTEM data across the Humble magnetic anomaly, Alaska**  
Daniel Sattel and Ken Witherly
- 27–35 Regional TEMPEST survey in north-east Namibia**  
Geoffrey Peters, Gregory Street, Ivor Kahimise and David Hutchins
- 36–48 Helicopter EM (ZTEM–VTEM) survey results over the Nuqrah copper–lead–zinc–gold SEDEX massive sulphide deposit in the Western Arabian Shield, Kingdom of Saudi Arabia**  
Jean M. Legault, Carlos Izarra, Alexander Prikhodko, Shengkai Zhao and Emad M. Saadawi
- 49–57 MULTIPULSE – high resolution and high power in one TDEM system**  
Tianyou Chen, Greg Hodges and Philip Miles
- 58–63 Geobandwidth: comparing time domain electromagnetic waveforms with a wire loop model**  
Greg Hodges and Tianyou Chen
- 64–73 Not extinct yet: innovations in frequency domain HEM triggered by sea ice studies**  
Andreas A. Pfaffhuber and Stefan Hendricks
- 74–84 Airborne electromagnetic modelling options and their consequences in target definition**  
Alan Yusen Ley-Cooper, Andrea Viezzoli, Julien Guillemoteau, Giulio Vignoli, James Macnae, Leif Cox and Tim Munday
- 85–96 Modelling an arbitrarily oriented magnetic dipole over a homogeneous half-space for a rapid topographic correction of airborne EM data**  
Julien Guillemoteau, Pascal Sailhac and Mickael Behaegel
- 97–111 New developments in AEM discrete conductor modelling and inversion**  
Marc A. Vallée
- 112–117 Rapid approximate inversion of airborne TEM**  
Peter K. Fullagar, Glenn A. Pears, James E. Reid and Ralf Schaa
- 118–129 Modelling the superparamagnetic response of AEM data**  
Daniel Sattel and Paul Mutton
- 130–135 Using the in-line component for fixed-wing EM 1D inversion**  
Adam Smiarowski
- 136–139 Extending the range of time constants recorded by the SPECTREM AEM system**  
Peter B. Leggatt



Australian Society of Exploration Geophysicists



Society of Exploration Geophysicists of Japan



Korean Society of Earth and Exploration Geophysicists