

EXPLORATION GEOPHYSICS

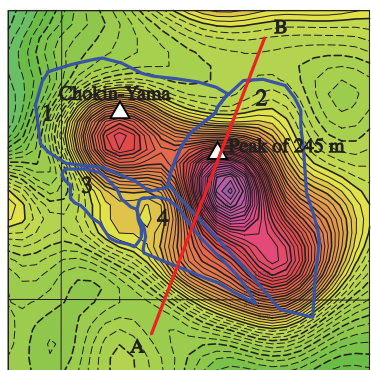
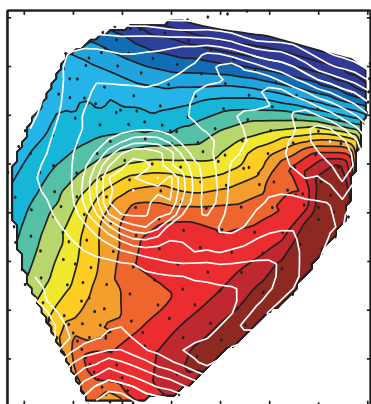
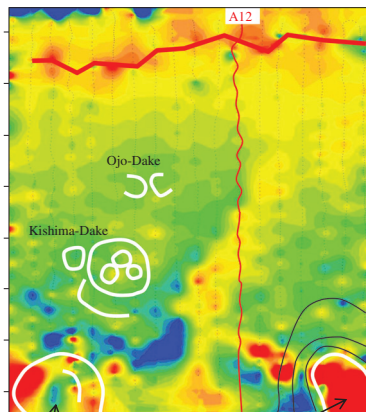
www.publish.csiro.au/journals/eg

10.1071/EGv45n1toc

Special Issue: Airborne Surveys and Monitoring of the Earth - Application to the Mitigation of Natural and Anthropogenic Hazards

Guest Editor: Shigeo Okuma

- 1–2 Airborne surveys and monitoring of the Earth – application to the mitigation of natural and anthropogenic hazards**
Shigeo Okuma
- 3–7 Radiation monitoring using an unmanned helicopter in the evacuation zone around the Fukushima Daiichi nuclear power plant**
Yukihisa Sanada, Atsuya Kondo, Takeshi Sugita, Yukiyasu Nishizawa, Youichi Yuuki, Kazutaka Ikeda, Yasunori Shoji and Tatsuo Torii
- 8–15 Precipitation correction of airborne gamma-ray spectrometry data using monitoring profiles: methodology and case study**
Andreas Ahl, Klaus Motschka and Peter Slapansky
- 16–23 Aeromagnetic 3D subsurface imaging with effective source volume minimisation and its application to data from the Otoge cauldron, Shitara, Central Japan**
Tadashi Nakatsuka and Shigeo Okuma
- 24–36 Aeromagnetic constraints on the subsurface structure of Usu Volcano, Hokkaido, Japan**
Shigeo Okuma, Tadashi Nakatsuka and Yoshihiro Ishizuka
- 37–42 Aeromagnetic survey using an unmanned autonomous helicopter over Tarumae Volcano, northern Japan**
Takeshi Hashimoto, Takao Koyama, Takayuki Kaneko, Takao Ohminato, Takatoshi Yanagisawa, Mitsuhiro Yoshimoto and Eiichi Suzuki
- 43–48 Grounded electrical-source airborne transient electromagnetics (GREATEM) survey of Aso Volcano, Japan**
Hisatoshi Ito, Hideshi Kaieda, Toru Mogi, Akira Jomori and Youichi Yuuki
- 49–61 Three-dimensional resistivity modelling of grounded electrical-source airborne transient electromagnetic (GREATEM) survey data from the Nojima Fault, Awaji Island, south-east Japan**
Sabry Abd Allah, Toru Mogi, Hisatoshi Ito, Akira Jomori, Youichi Yuuki, Elena Fomenko, Kenzo Kiho, Hideshi Kaieda, Koichi Suzuki and Kazuhiro Tsukuda



Australian Society of Exploration Geophysicists



Society of Exploration Geophysicists of Japan



Korean Society of Earth and Exploration Geophysicists