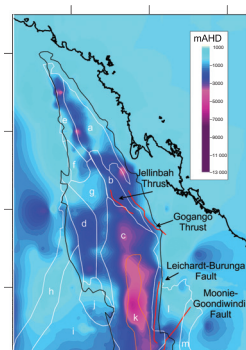
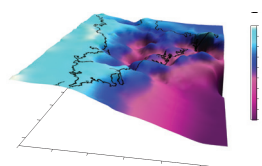
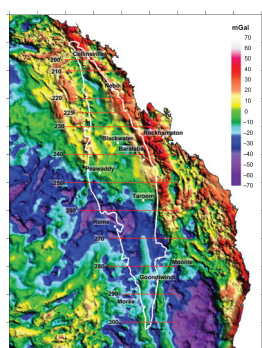


# EXPLORATION GEOPHYSICS

[www.publish.csiro.au/journals/eg](http://www.publish.csiro.au/journals/eg)

10.1071/EGv43n1toc



**1–7 Common-angle image gathers for shot-profile migration: an efficient and stable strategy**

Weijia Sun, Li-Yun Fu and Binzhong Zhou

**8–25 Building 3D geological knowledge through regional scale gravity modelling for the Bowen Basin**

Cara Danis, Craig O'Neill and Mark Lackie

**26–35 Sydney–Gunnedah–Bowen Basin deep 3D structure**

Cara Danis

**36–46 Investigation of ULF magnetic anomaly before moderate earthquakes**

Ashok K. Sharma, Amol V. Patil and Rangnath N. Haridas

**47–57 Determination of a rock physics model for the carbonate Fahliyan Formation in two oil wells in southwestern Iran**

SeyedBijan Mahbaz, Hadi Sardar and Hossein Memarian



Australian Society of Exploration Geophysicists



Society of Exploration Geophysicists of Japan



Korean Society of Earth and Exploration Geophysicists