



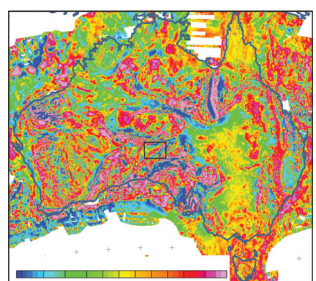
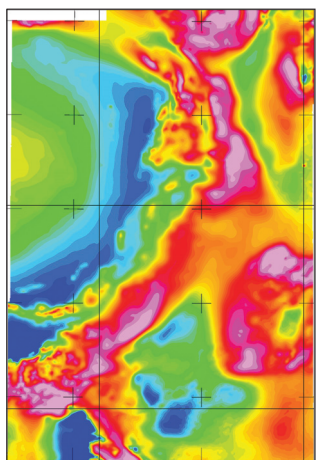
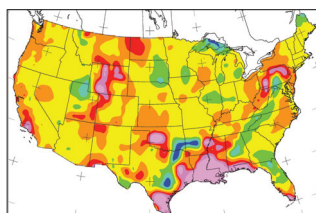
# Exploration Geophysics

The Bulletin of the Australian Society of Exploration Geophysicists

## EDITORIAL PANEL

### Managing Editor

Mark Lackie



- A comparison between Laplace domain and frequency domain methods  
for inverting seismic waveforms ..... 189  
*Wansoo Ha, YoungHo Cha and Changsoo Shin*

- Sedimentary basins reconnaissance using the magnetic Tilt-Depth  
method ..... 198  
*Ahmed Salem, Simon Williams, Esuene Samson, Derek Fairhead,  
Dhananjay Ravat and Richard J. Blakely*

- Delineating and modelling an underground water conduit by scattered  
micro-gravity data and electrical resistivity sounding ..... 210  
*Vahid E. Ardestani*

- Detection and delineation of underground septic tanks in sandy terrain  
using ground penetrating radar ..... 219  
*Gabriel Efomeh Omolaiye and Elijah A. Ayolabi*