

Supplementary material

**An alternative broad vegetation hierarchy for eastern New South Wales,
with application for environmental planning and management**

Nicholas J. H. Gellie^{A,C} and John T. Hunter^B

^APrincipal Fire and Vegetation Scientist, at Ecofuego, 53 Pioneer Road,
Stanley, Vic. 3747, Australia.

^BSchool of Environmental and Rural Science, Elm Avenue, University of New England,
Armidale, NSW 2350, Australia. Email: jhunter8@bigpond.com

^CCorresponding author. Email: ecofuego.au@posteo.net

Appendix S1

Table S1. List of macrogroups (L.5 IVC) derived from vegetation formation groups (VFGs)

The rows shaded in grey in the table indicate the new macrogroups added in this study to the original list of those found in western NSW (unshaded rows) – Benson *et al.* (2006)

Numeric code	Division (L.4 IVC)	Abbreviation	Macrogroups (L.5 IVC)	New groups	Eastern NSW
1	Alpine Complex	ABF	Alpine Bogs and Fens	0	1
2	Alpine Complex	AF	Alpine Fjaeldmarks	0	1
3	Alpine Complex	AHG	Alpine Herbfields	0	1
4	Alpine Complex	AHS	Alpine Woodlands, Heaths, and Shrublands	0	1
5	Bare land	BLG	Bare Land: Gravels–Alluvium–Sand–Soil	0	1
6	Bare land	BLB	Bare Land: Beach Sand	1	1
7	Bare land	BLR	Bare Land: Rock	1	1
8	Eucalypt Forest	ECT	<i>Eucalyptus</i> Mesic Forests of the Eastern Tablelands	0	1
9	Eucalypt Forest	EIFC	<i>Eucalyptus</i> Ironbark Forests of the East Coast and Tablelands	0	1
10	Eucalypt Forest	EFLMSC	<i>Eucalyptus</i> (Grassy or Shrubby) Forests on Low-Moderate Fertility Soils on the East Coast	0	1
11	Eucalypt Forest	EWLFST	<i>Eucalyptus</i> (Grassy or Shrubby) Woodlands and Forests on Low Fertility Soils on the Eastern Tablelands	0	1
12	Eucalypt Forest	RFCT	Regenerating Forests of the Coast and Tablelands	0	1
13	Eucalypt Forest	RIFEC	Riparian Forests and Shrublands of the Eastern Coast and Tablelands (non-rainforest)	0	1
14	Eucalypt Forest	SMGF	<i>Eucalyptus</i> Semi-Mesic Grassy Forests and Woodlands of the Eastern Tablelands and Coast on Soils of Moderate Fertility	1	1
15	Eucalypt Forest	SMSF	<i>Eucalyptus</i> Semi-Mesic Shrub Forests and Woodlands of the Eastern Tablelands and Coast on Soils of Moderate Fertility	1	1
16	Eucalypt Forest	TDSFEC	<i>Eucalyptus</i> Tall Dry Shrub Forests and Woodlands of the Eastern Tablelands and Coastal Lowlands on Soils of High Fertility	0	1
17	Eucalypt Forest	TGFEC	<i>Eucalyptus</i> Tall Grassy Forests or Woodlands of the Eastern Coastal Lowlands on Soils of High Fertility	0	1
18	Eucalypt Forest	TWFEC	<i>Eucalyptus</i> Tall Mesic Shrub Forests of the Eastern Coastal Lowlands on Soils of High Fertility	0	1
19	Eucalypt Woodland	EBWC	<i>Eucalyptus</i> Box Woodlands of the East Coast Valleys	0	1
20	Eucalypt Woodland	EBWP	<i>Eucalyptus</i> Box (Mostly Grassy) Woodlands of the Inland Plains	0	0
21	Eucalypt Woodland	EBWT	<i>Eucalyptus</i> Box Woodlands of the Tablelands and Western Slopes	0	1
22	Eucalypt Woodland	EIW	<i>Eucalyptus</i> Communities of Inland Watercourses and Inner Floodplains	0	1
23	Eucalypt Woodland	EIWI	<i>Eucalyptus</i> Ironbark Woodlands and Forests of the Inland Slopes, Plains and Peneplains	0	0
24	Eucalypt Woodland	ESAW	<i>Eucalyptus</i> Subalpine Woodlands and Forests	0	1
25	Eucalypt Woodland	ESCT	<i>Eucalyptus</i> Swamp Communities of the Eastern Coast and Tablelands	0	1
26	Eucalypt Woodland	ESWWS	<i>Eucalyptus</i> (Grassy or Shrubby) Woodlands and Forests on Low Fertility Soils on the Western Slopes	0	1
27	Eucalypt Woodland	EWHS	<i>Eucalyptus</i> Heathy Woodlands on Low Fertility Soils on the East Coast	0	1
28	Eucalypt Woodland	EWRHI	<i>Eucalyptus</i> Woodlands on Rocky Hills of the Inland	0	0
29	Eucalypt Woodland	EWT	<i>Eucalyptus</i> I <i>Corymbia</i> Woodlands of the Tropics	0	0
30	Eucalypt Woodland	RVWS	Rocky Outcrops: Woodlands or Shrublands of the Coast and Eastern Tablelands	1	1
31	Exotic Forests	RX	Rainforest: exotics dominated	1	1
32	Exotic Forests	XAC	Exotic: Acacia forests		
33	Exotic Forests	XAWV	Exotic: Introduced other agricultural woody vegetation	1	1
34	Exotic Forests	XCP	Exotic: Coniferous forest plantation	1	1
35	Exotic Forests	XDF	Exotic: Deciduous forests or shrublands	1	1
36	Exotic Forests	XEP	Exotic: Eucalypt forest plantation	1	1
37	Exotic Forests	XOFT	Exotic: Introduced other forests–shrublands	1	1
38	Freshwater Wetland	FWACL	Freshwater Wetlands: Aquatic communities of Coastal Lakes, Lagoons and Rivers	0	1
39	Freshwater Wetland	FWECFS	Freshwater Wetlands: Coastal Swamp Forests and Shrublands	0	1
40	Freshwater Wetland	FWI	Freshwater Wetlands: Inland Aquatic, Swamp and Shrubland Communities	0	1
41	Freshwater Wetland	FWMAL	Freshwater Wetlands: Montane and Alpine Freshwater Lakes	0	1
42	Freshwater Wetland	FWMB	Freshwater Wetlands: Montane Bogs and Fens	0	1

Numeric code	Division (L.4 IVC)	Abbreviation	Macrogroups (L.5 IVC)	New groups	Eastern NSW
43	Freshwater Wetland	FWSS	Freshwater Wetlands: East Coast and Tablelands Sedgeland Swamps	0	1
44	Temperate Grassland	EGA	Ephemeral Grasslands in Semi-arid or Arid Regions	0	0
45	Temperate Grassland	GE	Grasslands: exotic tussock	1	1
46	Temperate Grassland	GFAPF	Grasslands of Freshwater Aquatic Habitats of Periodically Flooded Soils	0	1
47	Temperate Grassland	GFTI	Grasslands on Fine Texture Soils on the Inland Slopes and Plains	0	0
48	Temperate Grassland	GLZH	Grasslands on Coastal Headlands	0	1
49	Temperate Grassland	GTM	Grasslands of Montane Regions often dominated by <i>Poa</i>	0	1
50	Temperate Grassland	HGI	Hummock Grasslands and Woodlands of the Inland Plains and Peneplains	0	0
51	Temperate Heathland	HSCH	Heaths and Shrublands on Coastal Headlands	0	1
52	Temperate Heathland	HSCS	Heaths and Shrublands on Coastal Sands	0	1
53	Temperate Heathland	HSOI	Heaths on the Triassic Sandstones of Central-eastern New South Wales	0	1
54	Temperate Heathland	HSOT	Heaths on Siliceous Outcrops on the Tablelands and Western Slopes of South-eastern Australia	0	1
55	Mallee Open Woodland	EMCT	Mallee Heaths and Shrublands of the East Coast and Tablelands	0	1
56	Mallee Open Woodland	MWSI	Mallee Woodlands and Shrublands of Inland Sandplains and Sand Dunes	0	0
57	Mallee Open Woodland	MWSR	Mallee Woodlands and Shrublands on Stony Ridges of the Inland	0	0
58	<i>Casuarina</i> Forest	CFEC	<i>Casuarina</i> Forests of the East Coast and Tablelands	0	1
59	Acacia Woodland	ASI	<i>Acacia</i> Woodlands and Shrublands of the Inland Slopes and Plains	0	0
60	<i>Casuarina</i> Woodland	CCI	<i>Casuarina</i> Woodlands of the Inland Slopes and Plains	0	1
61	<i>Callitris</i> Woodland	CPW	<i>Callitris</i> (Cypress Pine) Woodlands Mainly of the Inland Slopes and Plains	0	1
62 ^A	Not classified	NCL	Not classified	0	1
63 ^A	Not classified	NCU	Vegetation: Remnant vegetation in urban or rural areas not classified	0	1
64	Rainforest	RCT	Rainforest: Cool Temperate	0	1
65	Rainforest	RD	Rainforest: Dry	0	1
66	Rainforest	RDGI	Rainforest-derived Genera Woodlands and Shrublands of the Inland Slopes and Plains	0	0
67	Rainforest	RE	Rainforest: Ecotonal	0	1
68	Rainforest	RG	Rainforest: Gallery	0	1
69	Rainforest	RL	Rainforest: Littoral	0	1
70	Rainforest	RO	Rainforest: Oceanic Islands	0	1
71	Rainforest	RSEVT	Rainforest: Semi-Evergreen Vine Forests and Ooline	0	1
72	Rainforest	RST	Rainforest: Sub-tropical	0	1
73	Rainforest	RVRF	Rocky Outcrops: Rainforest and Wet Forests of the Coast and Eastern Tablelands	1	1
74	Rainforest	RWT	Rainforest: Warm Temperate	0	1
75	Saline Wetland	SWCBL	Saline Wetlands: Coastal Brackish Lakes	0	1
76	Saline Wetland	SWISL	Saline Wetlands: Saline and Clay Lakes (Playas) of the Inland	0	1
77	Saline Wetland	SWM	Saline Wetlands: Mangrove Mudflats	0	1
78	Saline Wetland	SWSG	Saline Wetlands: Seagrass Meadows	0	1
79	Saline Wetland	SWSM	Saline Wetlands: Coastal Salt-marsh	0	1
80	Shrubland	AST	<i>Acacia</i> Forests and Shrublands of the East Coast and Tablelands	0	1
81	Shrubland	CCC	Coastal Cliff Communities	0	1
82	Shrubland	CHS	Chenopod (Halophytic) Shrublands of the Inland	0	0
83	Shrubland	CSD	Coastal Sand Dune Grasslands, Forblands and Shrublands	0	1
84	Shrubland	EMDI	<i>Eremophila</i> , <i>Melaleuca</i> and <i>Dodonaea</i> Shrublands of the Inland	0	0
85	Water Bodies	WAB	Water Bodies: Freshwater	0	1
86	Water Bodies	WBI	Water Bodies: Saline Estuaries	0	1
87	Water Bodies	WBO	Water Bodies: Oceans	0	1

Appendix S2

Classification and mapping of L.5 (macrogroup), L.7 IVC (alliance) and L.8 IVC (association) within the three vegetation mapping regions

North Coast mapping region

As part of the Regional Forest Agreements in NSW, a Comprehensive Regional Assessment Forest Type Inventory (CRAFTI) was undertaken in the NC to capture data on canopy floristics, growth stage, and disturbance to develop forest ecosystem and old growth datasets (NSW National Parks and Wildlife Service 2001a, 2001b). A consistent methodology for canopy floristics was applied across all comprehensive regional assessment (CRA) regions although the canopy floristics codes varied in detail between the NC and SCT regions (Tables S2 and S3 in Appendix S3). The NC API datasets comprising the Upper North-East and Lower North-East sub-regions contain attribute fields comprising four detailed API classifications and together with a code for type of understorey in forests (i.e. Dry Sclerophyll or Wet Sclerophyll, Keith (2004).

Baur's (1962) forest classification was used as a starting point in developing a set of unique vegetation mapping units (VMUs) at the level of IVC 7/8 classification level for both Upper and Lower North-East API maps, which when combined, would create a consistent vegetation map for the NC mapping region (Fig. 3; SEED (2020): numbers 1108, 1082). The tables for rainforest and eucalypt forest in the Baur (1962) classification work were compared with sub-alliances in Beadle (1981). The Baur classification was considered equivalent vegetation alliance (IVC Level 7) rather than association (IVC Level 8). A set of unique alphanumeric codes were assigned to the rainforests (R01–R99) and eucalypt forests (E01–E129). Further rainforest and eucalypt associations/alliances were added to this preliminary list of alliances if they did not fit into the previously classified ones. As the map progressively took shape the list of vegetation alliances systematically grew until all the combinations of API codes in the attribute tables of API in UNE and LNE sub-mapping regions were exhausted. Further classification of API mapping codes into level 7/8 VMUSs were also carried out for non-rainforest or non-eucalypt forest types. New individual alphanumeric codes were created for either vegetation alliances or in some instances Macrogroups in these instances: A, Acacia forests or woodlands (A1–A2); B, bare ground (B1–B4); C, Casuarina forests or woodlands (C1–BC3); G, grasslands (G01–G06); P, exotic forests (P1, P3); S, shrublands (S01–S32); W, wetlands (W01–W11); and X, exotic forests and shrublands (X01–X04).

The process was a systematic desktop exercise that used a range of informative high-resolution satellite imagery in Google Earth and terrain information for the reclassification of the VMUs to macrogroups. A set of field queries were used to select subsets of API polygons that corresponded to likely VMUs. To aid this selection and filtering process the attribute table was first sorted by Level 2 or Level 3 CRAFTI field attribute and then a filter query such as 'Level 2 LIKE (E06%E08%) or Level 3 = E1802%' to select the polygons that corresponded to the target VMU. Filter queries on Level 4 and 5 CRAFTI attribute fields in the API polygon data were also used in some cases as these were found to be useful in mapping particular VMUs. The resultant set of API polygons were then inspected and verified on the screen against a backdrop of Google Earth imagery and other geographical layers such as terrain digital terrain models.

For example, moist blackbutt forest was mapped using a Level 3 API Code = E61 in the attribute table for both UNE and LNE mapping sub-regions. To select the API polygons with that Level 3 CRAFTI attribute value, a filter query was used in QGIS using that expression (LHS of Fig. S1). This then displayed the selected polygons in both the attribute table (bottom inset of Fig. S1) and on the computer screen (background of Fig. S1). The distribution of these polygons was tested against a backdrop of Google Earth before assigning a value of E01 into the Baur Code attribute field using the attribute field calculator.

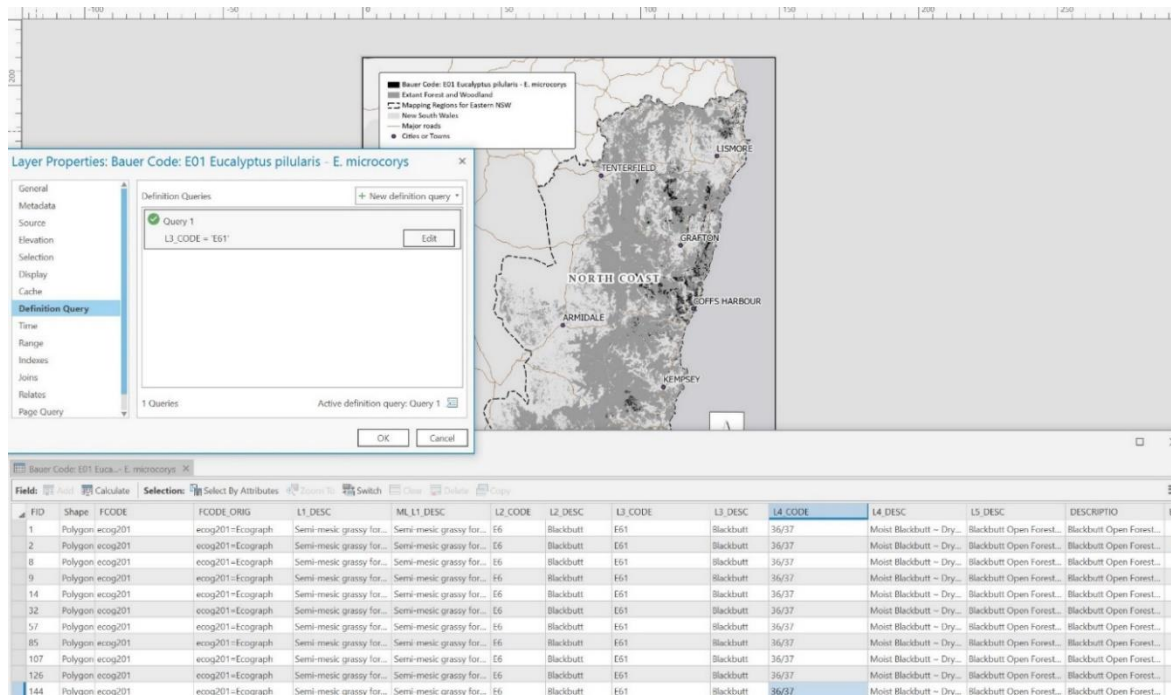


Fig. S1. Left inset showing query table where Level 3 API = code 'E61' showing the different API description fields for E01 *Eucalyptus pilularis*–*E. microcorys* VMU; Bottom inset showing results of filter query in the different API fields view within the attribute table; and the background view showing the results in map form for E01 *Eucalyptus pilularis*–*E. microcorys* VMU in the UNE mapping sub-region.

This interrogation of the API datasets was repeated for all the possible API combination codes assigning each polygon to a corresponding Baur Code value. Hundreds of iterations of this mapping step assigning the remaining API polygons to either Baur (1962) rainforest (R01–R16) or eucalypt forest alliances (E01–E40) or to the additional set of rainforests (R17–R99) or eucalypt forest (E41–E129) drawn from Beadle (1981), our vegetation mapping experience, and other vegetation mapping sources or tree distribution maps as an additional guide. In addition, all other non-eucalypt forest and non-forest vegetation alliances, and in some cases associations, were classified and mapped using this same process.

This vegetation mapping method was in effect a supervised classification of API polygons using the available API mapping codes without the support of classified vegetation plots to support the assignment of a unique VMU to each set of API mapping polygons. The available vegetation plot data for the NC mapping region were not used for several reasons: their geographical and environmental distribution were not distributed proportionately or had sufficient density across environmental domains; the plot sizes at 0.04 ha were generally too small to capture eucalypt and rainforest tree canopy diversity in the NC region which is of greater importance

for reclassification of the API code combinations into VMUs and macrogroups. We did undertake some preliminary classification of the North Coast vegetation plot data using PATN analysis software. In the end we could not achieve satisfactory vegetation classification at the level of vegetation alliance that could support the vegetation mapping work. This is elaborated further in the discussion.

The Sydney Basin and Central West mapping region (central eastern NSW)

The broad Eastern Bushland Database (EBD) vegetation map for central eastern NSW (Holme 1993) served as the primary underlying vegetation mapping dataset for this mapping region. The EBD map was reclassified into macrogroups at L.5 IVC providing a unique attribute field which did not exist previously. In some cases, vegetation polygons with the original EBD code were split into two or more macrogroups based on geographic and geomorphological factors such as botanical province (Coast, Tablelands, or Western Slopes), lithology, topographic position and aspect. This supervised classification work was done in QGIS using a backdrop of Google Earth imagery available on line within QGIS. This background layer helped to infill gaps in geographic coverage outside of the more detailed and more recent local vegetation maps.

In the case of the more detailed vegetation maps, the attribute tables for each shape file were exported as a summarised comma delimited file and then imported into MS Excel where new macrogroup attribute fields were created into which a macrogroups code and description value was assigned to each VMU. Each VMU in each vegetation map then was assigned a unique VMU number. The modified file was then exported as a comma delimited file for later merging with other summary attribute tables into the master look-up attribute table for this mapping region.

Southern Tablelands and South Coast mapping region (south-eastern NSW)

For the Southern CRA mapping sub-region (Fig. 3; SEED 2020, number 3858), vegetation map units from Gellie (2005) were verified and checked for inconsistencies and errors in nomenclature before assigning a macrogroup code and description to each VMU, nominally classified as L.7 IVC. Some of the original mapping was updated on the South Coast API map, with more recent classified vegetation plot data for the South Coast bioregion, and more recent higher resolution satellite imagery to distinguish some of the semi-mesic and mesic eucalypt from the dry eucalypt macrogroups. This was not possible when a 'Southern Forests' vegetation map was first created in 2005 (Gellie 2005).

In the case of the Eden CRA sub-region (Fig. 3; SEED 2020, number 4138), a combination of numeric and semi-supervised classification of full-floristic vegetation plot data for the South Coast bioregion was undertaken using the Kulczynski coefficient and unweighted pair-group method based on arithmetic averages (UPGMA) clustering algorithm in PATN software (Belbin 1991). The classification was aimed at creating unique VMUs at the level of association (IVC L.8). Earlier classification and mapping in this region (Keith and Bedward 1999, Tozer *et al.* 2010) were not used as their classifications were based on skewed distribution and density of plot data across the region; the mapping was done using modelling rather than core API data; and the eventual mapping scale was closer to 1:25,000, a higher scale of resolution to that obtained in Tozer *et al.* (2010).

The vegetation plot data for the South Coast bioregion were filtered using a geography density filter to even out the bias in distribution of vegetation plot samples. Species records with a cover abundance greater than 2 in

a modified Braun-Blanquet (1932) cover-abundance scale between 1 and 6 were only used in the analysis. Two levels of classifications at the 64 and 100-vegetation group level were evaluated in GIS against the API mapping data prepared for the Eden sub-region in 1997 (NSW NPWS 1997). The classification was selected to provide the best correspondence between API codes (see Table S3 in Appendix S3) and the classified vegetation plot data at the level of vegetation alliance (L.7 IVC) and in some cases association (L.8 IVC) following methods used in Gellie (2005). The 64-group level was found to best associated with the CRAFTI API codes in the CRAFTI API GIS layer. The classified vegetation plot data were then used to create a vegetation map based on an expert assignment of classified vegetation plots to API polygons using a supervised classification of the API code combinations derived from the CRAFTI API mapping project (Gellie 2005). Sets of API polygons for the Eden API mapping dataset were then systematically allocated to a unique VMU code between 1 and 64 for 52,000 polygons in the Eden mapping sub-region. Where there was some difficulty in coding sets of polygons for closely related vegetation groups, these were differentiated using other data from the Southern Forests CRA project (Gellie 2005) including: classified vegetation plot databased on tree species; summarised plant species frequency abundance profiles for each VMU, 2-days aerial photo-interpretation of the Eden API mapping dataset against a backdrop of Google Earth imagery in QGIS, and an understorey type attribute field in the API attribute table (e.g. DGF, dry grass forest; DSF, Dry sclerophyll forest; WFF, Wet fern forest; WSF, Wet sclerophyll forest) in the API mapping data.

For example, there were three readily identifiable sets of semi-mesic to mesic forest VMUs in the Eden and southern Regions identified in Gellie (2005). The first is a mesic type with *Eucalyptus fastigata* and *E. nitens* with a predominance of mesic shrubs such as *Olearia argophylla* and *Pomaderris aspera* and ferns, *Dicksonia antarctica* and *Polystichum proliferum*. The last two PCTs are semi-mesic forests occurring on more exposed aspects and less fertile soils: the second type is a *Eucalyptus cypellocarpa*–*Eucalyptus obliqua* tall forest with a *Calochlaena dubia* fern understorey while the third is a *Eucalyptus cypellocarpa*–*Eucalyptus radiata* with a bracken fern-grassy understorey dominated by *Pteridium esculentum* and *Poa meionectes*. The three VMUs could be differentiated largely on wet sclerophyll shrub, wet sclerophyll fern, and wet sclerophyll-dry sclerophyll descriptors in the understorey attribute field which also corresponds to their relative physiographic position, forest structure, and spectral reflectance in the Eden sub-regional landscape revealed on Google Earth images.

General conversion process of VMUs to macrogroups from existing or newly derived vegetation mapping

Deriving macrogroups for each of the vegetation mapping regions involved the following steps in QGIS, MS Excel and ESRI ARCMAP:

1. From the mapping processes outlined in the previous methods, there were now VMUs with unique numeric vegetation codes for each mapping region (1–4986), either at the level of alliance (L.7 IVC) or association (L.8 IVC) for NC and SCT mapping regions, and in the Sydney Basin sub-region in the SBCW, and macrogroup (L.5 IVC) equivalents in the rest of the SBCW mapping region
2. In the case of existing vegetation maps, summarised vegetation type attribute data were exported from the attribute table of the shape file of the vegetation map layer as a comma delimited text file (csv). The summary export file contained a table of original vegetation map codes, map unit description, together with

any other useful summarised overstorey and understorey or ecological information for the intended classification of macrogroups, and their total areal extent.

3. The summarised data from the polygon attribute table was then imported into Excel to become a join lookup table for macrogroup codes and descriptions when linked back to the attribute table for the target vegetation map or to be part of the master lookup table for macrogroup attributes in the study area that contained all the VMU codes from 1 to 4986.
4. For each VMU in a vegetation map, equivalent Division (L.4 IVC), macrogroup codes and descriptions (L.5 IVC) were added as new fields using the original vegetation type description as the join link.
5. The table created in steps 3 and 4 was then exported from Excel as a delimited text file and imported into QGIS or ARCMAP for joining back to the shapefile of the original vegetation map using the map unit description field.
6. The macrogroups were then inspected on screen in QGIS GIS for logical consistency between the polygon attribute table and the distribution of the vegetation polygons on the computer display and any detected errors were corrected.
7. When most if not all of the mapping errors were corrected, the attribute lookup file for the vegetation map was pasted into the master lookup attribute file for the study area.
8. The vegetation map in shape file format was then exported as an ESRI grid raster (GRID) using its unique VMU code in step 8.

This was repeated for all the vegetation and maps chosen for the macrogroup map in eastern NSW. An empty raster dataset at 30-m grid cell size for eastern NSW dataset was created using the create raster tool in the processing tool bar in ARCMAP. The individual map GRIDS were then loaded into the mosaic raster tool in logical order (Table S4) and the empty target raster for eastern NSW was selected as the target raster. Where there were overlapping mapped data, mainly in the Sydney Basin mapping sub-region of SBCW and the Eden sub-region of the SCT, the vegetation maps were placed in ranked order from the most accurate and most recent to the least accurate and oldest dataset.

Final compilation step for macrogroup map in study area

Once compiled, the complete raster dataset for eastern NSW was rechecked for any lookup or assignment errors in the macrogroup code and description fields by visually inspecting the maps and randomly checking points on the map across the full range of the derived raster map. Where errors were found in a particular API or vegetation map, steps 5–8 in the previous section were redone to correct any macrogroup code assignment errors. This checking process was repeated several times until there were no more apparent discoverable errors. The final attribute table, containing the attributes fields: mapping region vegetation map unit identifier, VMU code and description, and macrogroup code and description (Table 2), was then joined using the unique VMU code (1–4986) to the 30-m grid cell raster data for eastern NSW.

The complete raster dataset for eastern NSW was then split into three mapping regions using the Extract by Mask tool in ARCMAP to facilitate analysis by area and by percentage of area for macrogroups. The final versions of the latter maps were then produced in ARCMAP.

The attribute tables of the latter mapping categories for each of the mapping regions were then exported from ARCMAP and imported into Excel to create a statistical report for each of the mapping regions. A pivot table routine in MS Excel was used to extract areal extent data for the macrogroups in each mapping region and for eastern NSW. A master report file combining the data from the three mapping regions was created using an index lookup routine in MS Excel to link the area statistics from each of the tables to the final validated lists of vegetation groups and detailed fuel types.

Appendix S3. CRAFTI code tables for CRA API mapping data

Table S2. API codes for eucalypt canopy for Upper and Lower North-East CRA regions in the NC Region

Notes: (1) rccp refers to relative canopy cover

Sub-formation Level 2	Symbol	Community Level 3	Symbol	RN17 numbers	Features
Swamp Forest	E5	Swamp Mahogany	1	30	Swamp Mahogany >50% rccp
Blackbutt	E6	Blackbutt Dominant	1	36–38	<i>E. pilularis</i> – <i>E. pyrocarpa</i> >50% rccp
		Blackbutt co-dominant	2	39–42	<i>E. pilularis</i> – <i>E. pyrocarpa</i> 30-50% rccp
Moist Coastal Complex	E7	Flooded Gum	1	48	<i>E. grandis</i> >50% rccp
		Brush Box	2	53	<i>L. conjertus</i> >50% rccp
		Other Moist Coastal	3	45–47, 49–52, 54, 60	Moist forest on protected aspects, extending well into escarpment, not dominated by Blackbutt or Flooded Gum
Grey Gum–Grey Ironbark–Mahogany complex	E8	Dry Coastal	1	61–62, 64, 66, 68	<i>E. maculata</i> >50% rccp
Spotted Gum complex	E9	Spotted Gum dominant	1	70, 71	<i>E. maculata</i> 30-50% rccp
		Spotted Gum co-dominant	2	72–76	Eastern Boxes and Ironbarks
Grey Box–Ironbark complex	E10	Forest Red Gum	1	80–88	Red Gums >50% rccp
Eastern Red Gums	E11	Forest Red Gum	1	92–93	Red Gum >30% and dom. with a range of other spp.
		Forest Red Gum–mixed hardwood spp.	2	65	
Coastal Stringybarks	E12	Needlebark Stringybark	1	97	<i>E. planchoniana</i> >50% rccp
		Other stringybarks	2	121, 123	Various species, Dry type
Scribbly Gums	E13		1	117–120	Dry type, various species
Bloodwood or Smooth-barked Apple	E14	Bloodwoods and Smooth-barked Apple	1	100, 105, 106, 108, 126, 127, 130	Coastal, drier sites, variable
		Rough-barked Apples	2	129	Rough-barked Apples > 50% rccp
Ashes	E15	Blue Mountains Ash	1	101	<i>E. oreades</i> >50% rccp
Peppermint	E16	Peppermint	1	111	Various Peppermints >50% rccp
		New England	2	142	<i>E. nova-anglica</i>
		Narrow-leaved Black	3	111	<i>E. nicholli</i>
Cold Tablelands Gums	E17	Snow Gum–Black Sallee and gums	1	136–140	Low height, frost exposed sites
		Gums	2	158–161, 164	Mountain or Manna Gums > 50% rccp
		Dorrigo White Gum	3	98	<i>E. dorrigoensis</i>
		Candlebark–Swamp Gum–Black Gum–Broadleaved Sallee	4	141, 143	Nominated Sp. >50% rccp
		Peppermint Gums (not Red Gum)	5	131	Nominated Sp. >50% rccp
		Moist Tableland	1	150–155	Various Tablelands species in close association
Messmate–Brown Barrel Complex	E18	Silvertop-leaved Stringybark	2	167, 168	Silvertop-leaved Stringybark >50% rccp
		Messmate–Brown Barrel–New England Blackbutt	3	Nil (similar to 151)	Mixed Messmate–Brown Barrel (NE Blackbutt as co-dominant)
New England Blackbutt	E19	New England Blackbutt	1	163	New England Blackbutt >50% rccp
		New England Blackbutt–Hillgrove Gum	2		<i>E. michaeliana</i> subdominant
Tableland Stringybarks	E20	New England Stringybark	1	122	Drier forest types, Central Tablelands
		Red Stringybark	2	124	Drier forest types, Western Tablelands

Sub-formation Level 2	Symbol	Community Level 3	Symbol	RN17 numbers	Features
Yellow Box–White Box–Red Gums	E21	Yellow Box–Red Gum–Red Box–Apple Box	1	99, 103, 171, 172, 173	Tableland drier sites, and towards woodland
		White Box	2	174, 175, 176	Tablelands and North Western Slopes
		Red Gums	3	177, 178	Western Tablelands
Black Cypress Pine	E22	Black Cypress Pine	1	180, 185	Dry ridge, Tablelands
		Black Cypress Pine–Eucalypt spp.	2	181–184	Western Tablelands
White Cypress Pine	E23	White Cypress Pine	1	188, 194	Western Tablelands
		White Cypress Pine–Eucalypt spp.	2	189–193, 195	Western Tablelands
River Red Gum	E24	River Red Gum	1	199	Western watercourses and Upper Hunter
		River Red Gum–Box–Coolibah	2	200	Inland streams only
Western Box–Ironbark	E25	Silver-leaved Ironbark	1	207	<i>E. melanophloia</i>
		Western Ironbark complex	2	205, 206, 209, 210	Western Tablelands
		Western Box	3	203	Mainly Western Tablelands, and Upper Clarence
		Western Box Ironbark	4	204	Western tablelands
		Western Box–Silver-leaved Ironbark	5	207	Western Tablelands

Table S3. API codes for eucalypt canopy types for Southern and Eden CRA regions (NSW National Parks and Wildlife Service 1999)

Mapping level 2 (complexes)	Code	Mapping level 3	Sub-code	Canopy species indicators (species listed are either dominant or co-dominant)
Swamp Forest	E05	Swamp Mahogany	01	<i>E. robusta</i>
		Coastal Woollybutt–Swamp Mahogany	02	<i>E. longifolia</i> – <i>E. robusta</i> (Shoalhaven–Jervis Bay)
Dry Blackbutt	E06	Blackbutt dominant	01	<i>E. pilularis</i>
		Blackbutt co-dominant	02	<i>E. pilularis</i> – <i>E. maculata</i> – <i>E. gummifera</i>
Moist Coastal Complex	E07	Bangalay dominant	01	<i>E. botryoidea</i> – <i>Acacia trachyphloia</i> – <i>Synoum glandulosum</i>
		Bangalay–Spotted Gum	04	<i>E. botryoidea</i> – <i>E. globoidea</i> ($\pm E. pilularis$) <i>E. maculata</i> ($\pm E. botryoidea$)
Dry Coastal Complex	E08	Bluebox	05	<i>E. baueriana</i> ($\pm E. cypellocarpa$ – <i>E. elata</i> – <i>E. viminalis</i> – <i>E. globoidea</i>)
		Appletop Box	02	<i>E. angophoroides</i> – <i>E. polyanthemos</i> <i>E. angophoroides</i> – <i>E. maidenii</i> – <i>E. tricarpa</i> <i>E. globoidea</i> – <i>E. angophoroides</i> ($\pm Angophora floribunda$)
		Coastal Grey Box	03	<i>E. baueriana</i> – <i>E. bosistoana</i> <i>E. bosistoana</i> – <i>E. longifolia</i> – <i>E. muelleriana</i> <i>E. mollucana</i> – <i>E. quadrangulata</i>
		Grey Gum	04	<i>E. punctata</i> – <i>E. paniculata</i> – <i>E. globoidea</i>
		Scribbly Gum–Bloodwood	05	<i>E. sclerophylla</i> – <i>E. gummifera</i>
		Woollybut	06	<i>E. longifolia</i> – <i>E. paniculata</i> – <i>E. globoidea</i>
			07	<i>E. longifolia</i> – <i>E. tricarpa</i> , <i>E. fibrosa</i> , <i>E. paniculata</i> – <i>E. globoidea</i> – <i>E. agglomerata</i> – <i>E. muelleriana</i>
			07	<i>E. paniculate</i> – <i>E. tricarpa</i>
			01	<i>E. maculata</i>
			02	<i>E. maculata</i> – <i>E. longifolia</i> ($\pm E. paniculata$ – <i>E. pilularis</i>)
Forest Red Gum	E11	Forest Red Gum dominant	01	<i>E. tereticornis</i>
		Forest Red Gum co-dominant	02	<i>E. tereticornis</i> – <i>Angophora floribunda</i>
		Swamp Forest Red Gum	03	<i>E. amplifolia</i> –($\pm E. viminalis$ – <i>E. cinerea</i>)
Dry Coastal Stringybarks	E12	Blue-leaved Stringybark	03	<i>E. agglomerata</i>
		White Stringybark	04	<i>E. globoidea</i> ($\pm Angophora floribunda$)
		Brown Stringybark	05	<i>E. baxterii</i>
			09	<i>E. globoidea</i> comp.– <i>E. paniculata</i> ($\pm Corymbia gummifera$)
			10	<i>E. globoidea</i> ($\pm E. tereticornis$)
			11	<i>E. gummifera</i> – <i>E. agglomerata</i> – <i>E. globoidea</i>
Apple	E14	Roughed-bark Apple	02	<i>Angophora floribunda</i>
Tableland and Escarpment Ash	E15	White Ash dominant	02	<i>E. fraxinoides</i>
Peppermint	E16	Peppermint dominant	01	<i>E. radiata</i> – <i>E. dives</i>
		Peppermint–Mountain Gum–Manna Gum	04	<i>E. radiata</i> – <i>E. dives</i> – <i>E. dalrympleana</i> – <i>E. viminalis</i>

Mapping level 2 (complexes)	Code	Mapping level 3	Sub-code	Canopy species indicators (species listed are either dominant or co-dominant)
Cold and Moist Tableland Gums		Peppermint co-dominant	05	<i>E. dives</i> – <i>E. rubida</i> <i>E. rubida</i> (\pm <i>E. dives</i>)
		Narrow-leaved Peppermint–Silvertop Ash Silvertop Ash–Peppermint	06	<i>E. radiata</i> – <i>E. sieberi</i> <i>E. sieberi</i> – <i>E. radiata</i> – <i>E. dives</i>
			07	<i>E. dives</i> – <i>E. macroryncha</i>
	E17	Snow Gum–Black Sallee–Mountain Gum Mountain–Ribbon Gum	01	<i>E. pauciflora</i>
			02	<i>E. dalrympleana</i> – <i>E. viminalis</i> (\pm <i>E. rubida</i>)
			03	<i>E. pauciflora</i> – <i>E. rubida</i> (\pm <i>E. dalrympleana</i>) <i>E. pauciflora</i> – <i>E. viminalis</i> (<i>E. dalrympleana</i> – <i>E. rubida</i>) <i>E. pauciflora</i> – <i>E. dives</i> – <i>E. rubida</i> (<i>E. dalrympleana</i>)
			04	<i>E. stellulata</i> – <i>E. pauciflora</i> (<i>E. camphora</i>)
		Shining Gum	07	<i>E. nitens</i>
		Mountain Gum–Snow Gum Mountain Swamp Gum	08	<i>E. dalrympleana</i> – <i>E. pauciflora</i> (<i>E. rubida</i> – <i>E. viminalis</i>)
			10	<i>E. camphora</i> (<i>E. stellulata</i>)
Brown Barrel–Messmate–Gum	E18	Brown Barrel–Messmate	01	<i>E. fastigata</i> – <i>E. maidenii</i> – <i>E. viminalis</i> – <i>E. dalrympleana</i> – <i>E. nitens</i> <i>E. fastigata</i> (<i>E. radiata</i> – <i>Bedfordia arborescens</i> – <i>Pomaderris aspera</i>) <i>E. fastigata</i> – <i>E. nitens</i> – <i>E. badjensis</i> <i>E. fastigata</i> (<i>Elaeocarpus holopetalus</i>)
			02	<i>E. fastigata</i> – <i>E. cypellocarpa</i> – <i>E. obliqua</i> <i>E. fastigata</i> – <i>E. radiata</i> – <i>E. viminalis</i>
	E18	Brown Barrel–Messmate–Ash Messmate	04	<i>E. fastigata</i> – <i>E. obliqua</i> – <i>E. sieberi</i> – <i>E. fraxinoides</i>
			05	<i>E. obliqua</i> – <i>E. radiata</i> (<i>E. viminalis</i>) <i>E. obliqua</i> <i>E. obliqua</i> – <i>E. cypellocarpa</i> – <i>E. viminalis</i>
			06	<i>E. bridgesiana</i> – <i>E. melliodora</i> (\pm <i>E. blakelyii</i>)
			10	<i>E. bridgesiana</i> <i>E. polyanthemus</i> ssp <i>vestita</i> – <i>E. macroryncha</i>
Dry Tableland and Escarpment Box–Red Gum	E21	Tablelands and Escarpment Box–Red Gum	11	<i>E. dwyeri</i> (\pm <i>E. goniocalyx</i>)
			12	<i>E. dealbata</i>
		See E2609	13	<i>E. goniocalyx</i> – <i>E. macroryncha</i>
			14	<i>E. melliodora</i> (\pm <i>E. blakelyii</i>)
			01	<i>E. mannifera</i> – <i>E. dives</i> (\pm <i>E. radiata</i> – <i>E. rubida</i>)
Dry Tableland and Escarpment Gum–Stringybark	E26	Brittle Gum	01	<i>E. mannifera</i> – <i>E. rossii</i> (\pm <i>E. dives</i> – <i>radiata</i>)
			01	<i>E. mannifera</i> – <i>E. viminalis</i> (\pm <i>E. dives</i> – <i>E. radiata</i>)

Mapping level 2 (complexes)	Code	Mapping level 3	Sub-code	Canopy species indicators (species listed are either dominant or co-dominant)
		Scribbly Gum	02	<i>E. rossii</i> (<i>E. mannifera</i>)
		Manna Gum–Yellow box	03	<i>E. viminalis</i> – <i>E. melliadora</i>
		Argyle Apple Box	04	<i>E. cinerea</i> (<i>composite</i>)– <i>E. mannifera</i>
		Red Stringybark	05	<i>E. macrorhyncha</i> – <i>E. dives</i>
		Blue-leaved Stringybark–Scribbly Gum	06	<i>E. agglomerata</i> – <i>E. sclerophylla</i>
			08	<i>E. macrorhyncha</i> – <i>E. rossii</i> – <i>E. mannifera</i> ($\pm E. dives$)
Dry Tableland and Escarpment Gum– Stringybark	E26	Red Stringybark–Long-leaved Box	09	<i>E. macrorhyncha</i> – <i>E. gonioocalyx</i> – <i>E. nortonii</i> ($\pm E. dives$ – <i>E. rossii</i>)
			10	<i>E. macrorhyncha</i> – <i>E. polyanthemos</i> ssp <i>polyanthemos</i> ($\pm E. rossii$)
Silvertop Ash	E31	Silvertop Ash	01	<i>E. sieberi</i> – <i>E. globoidea</i> – <i>Angophora floribunda</i> ($\pm E. muelleriana$) <i>E. sieberi</i> – <i>E. consideniana</i> – <i>E. agglomerata</i> – <i>E. globoidea</i> <i>E. sieberi</i> – <i>E. globoidea</i> – <i>E. agglomerata</i> – <i>E. muelleriana</i> <i>E. sieberi</i>
		Bloodwood–Silvertop Ash–Yertchuk	02	<i>E. gummifera</i> – <i>E. sieberi</i> – <i>E. consideniana</i>
		Yertchuk	04	<i>E. consideniana</i>
Southern Blue Gum–Yellow Stringybark	E32	Maidens Gum–White Stringybark	01	<i>E. maidenii</i> – <i>E. globoidea</i> <i>E. globoidea</i> – <i>E. maidenii</i> ($\pm Acacia mearnsii$)
		Maidens Gum dominant	02	<i>E. maidenii</i>
		Mountain Grey Gum co-dominant	04	<i>E. cypellocarpa</i> – <i>E. longifolia</i> ($\pm E. globoidea$ – <i>E. muelleriana</i>) <i>E. cypellocarpa</i> – <i>E. muelleriana</i> ($\pm E. viminalis$ – <i>E. obliqua</i> – <i>Angophora floribunda</i> – <i>E. smithii</i>) <i>E. cypellocarpa</i> – <i>E. obliqua</i> <i>E. cypellocarpa</i> – <i>E. globoidea</i>
		Mountain Grey Gum dominant	05	<i>E. cypellocarpa</i>
		Yellow Stringybark dominant	06	<i>E. muelleriana</i> <i>E. muelleriana</i> – <i>Allocasuarina littoralis</i> – <i>Acacia trachyphloia</i> <i>E. muelleriana</i> – <i>Pittosporum undulatum</i> – <i>Pomaderris aspera</i>
		Yellow Stringybark co-dominant	07	<i>E. muelleriana</i> – <i>E. paniculata</i>
		Gully Gum dominant	08	<i>E. smithii</i>
River Peppermint–Apple	E33	River Peppermint–Apple	01	<i>E. elata</i> – <i>Angophora floribunda</i> (<i>Casuarina cunninghamiana</i>) <i>E. elata</i> – <i>Angophora floribunda</i> (<i>Acacia . trachyphloia</i>)
		River Peppermint co-dominant	02	<i>E. elata</i> – <i>E. cypellocarpa</i> – <i>E. globoidea</i>
		River Peppermint dominant	03	<i>E. elata</i>

Table S4. Summary table of dataset polygons, vegetation mapping unit (VMUs) in datasets and regions, numbering system, and their order in the final grid raster by mapping region

API types correspond to the CRAFTI classification codes used in the UNE and LNE CRAFTI projects (NSW National Parks and Wildlife Service 2001a, 2001b)

Dataset order	Mapping region	Dataset name	Scale of API or vegetation map	Number of polygons	Number of map units in each map	Unique Eastern NSW number	Order of datasets in merged raster	Number of VMUs per region
1	North Coast (NC)	Upper North-East (UNE)	Sub-regional API	124 747	117	1-237	No overlap with LNE	237
2		Lower North-East (LNE)	"	171 116	162	1-237		
5	South Coast and Tablelands (SCT)	South Coast	Sub-regional API	43 118	117	3001-3303	2	229
6		West	"	31 832	86	3001-3304	1	
7		North	"	14 957	75	3001-3305	3	
3	Eden	Eden	Sub-regional API	22 128	73	2201-2278	2	78
4		Wadbilliga NP	Local API map	1625	28	2201-2278	1	
8	Sydney Basin–Central West (SBCW)	EBD-Central	Regional API	53 597	24	4001-4024	11	
9		NW-Wollemi NP	Local Vegetation map	31 202	69	4101-4169	1	
10		Putty Valley	"	6154	25	4202-4225	2	
11		Yengo NP	"	28 922	49	4301-4359	3	
12		SE Wollemi NP	"	12 003	46	4401-4460	4	
13		Western Blue Mountains	"	31 732	64	4501-4564	5	
14		Erskine Creek section of Blue Mountains NP	"	7793	34	4601-4635	6	
15		Warragamba NP	"	27 484	79	4701-4779	7	
16	Nattai NP	"	7285	46	4801-4846	8		
17	Woronora water catchment	"	8367	54	4901-4954	9		
18		Cumberland Plain	"	17 284	27	4960-4986	10	27
Total				641 336				

Appendix S4

Table S5. Summary table of vegetation mapping unit (VMUs), macrogroups (vegetation formation groups, VFGs), and divisions for the CRAFTI Upper North-East (UNE) and Lower North-East (LNE) API mapping datasets in the NC Region

ID	Code NC	VMU	Division (L.4 IVC)	Abbreviation	Macrogroup (VFG)	API code	Baur (1962) type	Region
1	A1	Regrowth Forest: <i>Acacia</i> spp.	<i>Acacia</i> Forest	RFCT	Regenerating Forests of the Coast and Tablelands	Fw	W-STR or W-SMR	LNE
2	A2	Banksia–Wattle: Unclassified	<i>Acacia</i> Shrubland	CSD	Coastal Sand Dune Grasslands, Forblands and Shrublands	Fw		UNE
3	B1	Bare land: River Alluvium	Bare land	RBG	Bare Land: Gravels–Alluvium–Sand–Soil	A		LNE, UNE
4	B2	Bare land: Beach Sand	Bare land	RBS	Bare Land: Beach Sand	A		LNE, UNE
5	B3	Bare land: Surficial rock	Bare land	RGA	Bare Land: Rock	A		LNE
6	B4	Bare land: Coastal Cliffs	Bare land	RGA	Bare Land: Rock	A		
7	B5	Bare land: Western Granite Rocks	Bare land	RGA	Bare Land: Rock	A		LNE
8	C1	<i>Casuarina cunninghamiana</i> forest	<i>Casuarina</i> Forest	RIFEC	Riparian Forests and Shrublands of the Eastern Coast and Tablelands (non-rainforest)	FR		LNE, UNE
9	C2	<i>Allocasuarina littoralis</i> forest	<i>Casuarina</i> Forest	CFEC	<i>Casuarina</i> Forests of the East Coast and Tablelands	F		LNE, UNE
10	C3	<i>Casuarina collumellaris</i> forest	<i>Casuarina</i> Forest	CFEC	<i>Casuarina</i> Forests of the East Coast and Tablelands	F		
11	G01	Native Grassland (unclassified)	Not classified	NCL	Not classified	G (L3)		
12	G02	Exotic Grassland (unclassified)	Temperate Grassland	GE	Grasslands: exotic tussock	EX		LNE, UNE
13	G03	Hind Dune Grassland	Temperate Grassland	CSD	Coastal Sand Dune Grasslands, Forblands and Shrublands	G (L3)		LNE, UNE
14	G04	ForeDune Grassland	Temperate Grassland	CSD	Coastal Sand Dune Grasslands, Forblands and Shrublands	G (L3)		LNE
15	G05	Montane–Sub-alpine grassland	Temperate Grassland	GTM	Grasslands of Montane Regions often dominated by <i>Poa</i>	G (L3)		LNE
16	G08	Coastal Headlands Grasslands	Temperate Grassland	GLZH	Grasslands on Coastal Headlands	G (L3)		LNE
17	P1	Plantation: coniferous	Exotic Forests	XCP	Exotic: Coniferous forest plantation	PP		LNE, UNE
18	P2	Plantation: eucalypt	Exotic Forests	XEP	Exotic: Eucalypt forest plantation	PE		LNE, UNE
19	P3	Plantation: deciduous	Exotic Forests	XDF	Exotic: Deciduous forests or shrublands			
20	R01	<i>Argyrodendron australe</i> – <i>Flindersia australis</i> – <i>Toona ciliata</i>	Rainforest	RST	Rainforest: Sub-tropical	R		LNE, UNE
21	R02	<i>Elaeocarpus grandis</i>	Rainforest	RST	Rainforest: Sub-tropical	R	STR	
22	R03	<i>Dysoxylum fraserianum</i>	Rainforest	RST	Rainforest: Sub-tropical	R	STR	
23	R04	<i>Sloanea woolsii</i>	Rainforest	RST	Rainforest: Sub-tropical	R	STR	LNE, UNE
24	R05	<i>Ceratopetalum apetalum</i> – <i>Argyrodendron australe</i>	Rainforest	RST	Rainforest: Sub-tropical	R	STR	LNE
25	R06	<i>Ceratopetalum apetalum</i> – <i>Schizomeria ovata</i> – <i>Doryphora sassafras</i>	Rainforest	RWT	Rainforest: Warm Temperate	R	STR/SMR	LNE, UNE
26	R07	<i>Ceratopetalum apetalum</i> – <i>Tristaniopsis laurina</i>	Rainforest	RWT	Rainforest: Warm Temperate	R	SMR	LNE, UNE
27	R08	<i>Ceratopetalum apetalum</i> – <i>Doryphora sassafras</i>	Rainforest	RWT	Rainforest: Warm Temperate	R	SMR	LNE, UNE
28	R09	<i>Nothofagus cunninghamiana</i> – <i>Ceratopetalum apetalum</i>	Rainforest	RCT	Rainforest: Cool Temperate	R	SMR	LNE, UNE
29	R10	<i>Araucaria cunninghamii</i> – <i>Flindersia australis</i>	Rainforest	RD	Rainforest: Dry	R	DR	LNE, UNE
30	R11	<i>Brachychiton discolor</i>	Rainforest	RD	Rainforest: Dry	R	DR	LNE

ID	Code NC	VMU	Division (L.4 IVC)	Abbreviation	Macrogroup (VFG)	API code	Baur (1962) type	Region
31	R12	<i>Catanospermum australe</i> – <i>Grevillea robusta</i>	Rainforest	RST	Rainforest: Sub-tropical	R	DR	LNE, UNE
32	R13	<i>Eugeneia ventenatii</i>	Rainforest	RSEVT	Rainforest: Semi-Evergreen Vine Forests and Ooline	R	STR/DR	UNE
33	R14	<i>Cupaniopsis anarcardioides</i>	Rainforest	RD	Rainforest: Dry	R	DR	LNE, UNE
34	R15	<i>Tristania conferta</i>	Rainforest	RD	Rainforest: Dry	R	DR	LNE, UNE
35	R16	<i>Schizomeria ovata</i> – <i>Banksia integrifolia</i>	Rainforest	RD	Rainforest: Dry	R	DR	
36	R17	<i>Backhousia myrtifolia</i>	Rainforest	RD	Rainforest: Dry	R	TR	LNE, UNE
37	R18	Palm Rainforests	Rainforest	RST	Rainforest: Sub-tropical	R	DR	LNE, UNE
38	R19	<i>Ficus coronata</i> – <i>Dendrocnide excelsa</i>	Rainforest	RD	Rainforest: Dry	R	STR	LNE, UNE
39	R20	<i>Drypetes deplanchei</i>	Rainforest	RST	Rainforest: Sub-tropical	R	DR	UNE
40	R21	<i>Karrabina benthamiana</i> (Red Carabeen)	Rainforest	RSEVT	Rainforest: Semi-Evergreen Vine Forests and Ooline	R	STR	UNE
41	R22	Palm–Viney Scrub	Rainforest	RST	Rainforest: Sub-tropical	R	STR	LNE
42	R23	<i>Cinnamomum camphora</i> -dominated rainforests	Exotic Forests	RX	Rainforest: exotics dominated	R	DR	LNE, UNE
43	R24	<i>Argyrodendron australe</i> – <i>Backhousia myrtifolia</i>	Rainforest	RD	Rainforest: Dry	R	DR	LNE
44	R25	<i>Tristaniopsis laurina</i> – <i>Ceratopetalum apetalum</i>	Rainforest	RG	Rainforest: Gallery	R	Gallery	LNE
45	R26	Viney Scrubs	Rainforest	RD	Rainforest: Dry	R	Dry	LNE
20	R01	<i>Argyrodendron australe</i> – <i>Flindersia australis</i> – <i>Toona ciliata</i>	Rainforest	RST	Rainforest: Sub-tropical	R		LNE, UNE
46	R27	Rainforest ecotonal–unclassified	Rainforest	RE	Rainforest: Ecotonal	R	Ecotonal	LNE
47	R28	<i>Endiandra sieberi</i> – <i>Doryphora sassafras</i>	Rainforest	RWT	Rainforest: Warm Temperate	R	SMR	LNE
48	R29	<i>Duboisia myoporoides</i> – <i>Schizomeria ovata</i> – <i>Doryphora sassafras</i>	Rainforest	RCT	Rainforest: Cool Temperate	R	Cool temperate	LNE
49	R30	<i>Drypetes australisica</i> – <i>Sarcomelicope simplicifolia</i>	Rainforest	RL	Rainforest: Littoral	R	DR	LNE
50	R31	<i>Acmena smithii</i>	Rainforest	RWT	Rainforest: Warm Temperate	R	SMR	LNE
51	R32	<i>Elaeocarpus holopetalus</i>	Rainforest	RCT	Rainforest: Cool Temperate	R	Cool temperate	LNE
52	R33	<i>Cryptocarya foveolata</i>	Rainforest	RWT	Rainforest: Warm Temperate	R	SMR	LNE
53	R34	<i>Eucryphia moorei</i>	Rainforest	RWT	Rainforest: Warm Temperate	R	SMR	LNE
54	R44	Rocky Outcrops: rainforest–unclassified	Rainforest	RVRF	Rocky Outcrops: Rainforest and Wet Forests of the Coast and Eastern Tablelands	R	STR	UNE
55	R51	Lantana camara disturbed Rainforest	Exotic Forests	RX	Rainforest: exotics dominated	R	STR	LNE, UNE
56	R52	Other species disturbed rainforest	Exotic Forests	RX	Rainforest: exotics dominated	R		UNE
57	R53	Regenerating Rainforest	Rainforest	RST	Rainforest: Sub-tropical	R	STR and SMR	LNE
58	R99	Rainforest: not classified	Rainforest	RST	Rainforest: Sub-tropical	R	STR and SMR	LNE, UNE
59	E01	<i>Eucalyptus pilularis</i> – <i>E. microcorys</i>	Eucalypt Forest	TWFEC	<i>Eucalyptus</i> Tall Mesic Shrub Forests of the Eastern Coastal Lowlands on Soils of High Fertility	E6	STR and SMR	LNE, UNE
60	E02	<i>E. pilularis</i> – <i>E. resinifera</i>	Eucalypt Forest	SMSF	<i>Eucalyptus</i> Semi-Mesic Shrub Forests and Woodlands of the Eastern Tablelands and Coast on Soils of Moderate Fertility	E6E8	WSF	UNE
61	E03	<i>E. resinifera</i> – <i>E. acmenioides</i>	Eucalypt Forest	SMSF	<i>Eucalyptus</i> Semi-Mesic Shrub Forests and Woodlands of the Eastern Tablelands and Coast on Soils of Moderate Fertility	E8	WSF	UNE

ID	Code NC	VMU	Division (L.4 IVC)	Abbreviation	Macrogroup (VFG)	API code	Baur (1962) type	Region
62	E04	<i>E.pilularis–E. racemosa</i>	Eucalypt Forest	EFLMSC	<i>Eucalyptus</i> (Grassy or Shrubby) Forests on Low-Moderate Fertility Soils on the East Coast	E6	WSF/DSF	LNE, UNE
63	E05	<i>E.racemosa–E. planchoniana</i>	Eucalypt Woodland	EWHSC	<i>Eucalyptus</i> Heathy Woodlands on Low Fertility Soils on the East Coast	E12E13	DSF	LNE, UNE
64	E06	<i>E. planchoniana</i>	Eucalypt Woodland	EWHSC	<i>Eucalyptus</i> Heathy Woodlands on Low Fertility Soils on the East Coast	E12	DSF	LNE, UNE
65	E07	<i>E. racemosa</i>	Eucalypt Woodland	EWHSC	<i>Eucalyptus</i> Heathy Woodlands on Low Fertility Soils on the East Coast	E13	DSF	UNE
66	E08	<i>E. maculata–E. moluccana</i>	Eucalypt Forest	EFLMSC	<i>Eucalyptus</i> (Grassy or Shrubby) Forests on Low-Moderate Fertility Soils on the East Coast	E13E12	DSF	LNE
67	E09	<i>E. pilularis–E. planchoniana</i>	Eucalypt Woodland	EWHSC	<i>Eucalyptus</i> Heathy Woodlands on Low Fertility Soils on the East Coast	E12E6	DSF	LNE, UNE
68	E10	<i>E. robusta–Melaleuca quinquinervia</i>	Eucalypt Woodland	ESCT	<i>Eucalyptus</i> Swamp Communities of the Eastern Coast and Tablelands	E11E5	SSF	LNE, UNE
69	E11	<i>Melaleuca quinquinervia</i>	Freshwater Wetland	FWECF	Freshwater Wetlands: Coastal Swamp Forests and Shrublands	Fp	SSF	LNE, UNE
70	E12	<i>Casuarina glauca</i>	Freshwater Wetland	FWECF	Freshwater Wetlands: Coastal Swamp Forests and Shrublands	SFp	SSF	LNE
71	E13	<i>Avicennia marina</i>	Saline Wetland	SWM	Saline Wetlands: Mangrove Mudflats	Y	SSF	LNE
72	E14	<i>E. pilularis–E. gummifera</i>	Eucalypt Woodland	EWHSC	<i>Eucalyptus</i> Heathy Woodlands on Low Fertility Soils on the East Coast	E6	SSF	LNE, UNE
73	E15	<i>E. grandis</i>	Eucalypt Forest	TWFEC	<i>Eucalyptus</i> Tall Mesic Shrub Forests of the Eastern Coastal Lowlands on Soils of High Fertility	E7	DSF/TW	LNE, UNE
74	E16	<i>E. dunnii</i>	Eucalypt Forest	TDSFEC	<i>Eucalyptus</i> Tall Dry Shrub Forests and Woodlands of the Eastern Tablelands and Coastal Lowlands on Soils of High Fertility		WSF	UNE
75	E17	<i>E. propinqua–E. siderophloia</i>	Eucalypt Forest	SMGF	<i>Eucalyptus</i> Semi-Mesic Grassy Forests and Woodlands of the Eastern Tablelands and Coast on Soils of Moderate Fertility	E10	WSF	LNE, UNE
76	E18	<i>E. carnea</i>	Eucalypt Forest	SMGF	<i>Eucalyptus</i> Semi-Mesic Grassy Forests and Woodlands of the Eastern Tablelands and Coast on Soils of Moderate Fertility		WSF/DSF	
77	E19	<i>E. pilularis–E. maculata</i>	Eucalypt Forest	EFLMSC	<i>Eucalyptus</i> (Grassy or Shrubby) Forests on Low-Moderate Fertility Soils on the East Coast	E6	DSF	LNE, UNE
78	E20	<i>E. maculata–E. moluccana</i>	Eucalypt Forest	EFLMSC	<i>Eucalyptus</i> (Grassy or Shrubby) Forests on Low-Moderate Fertility Soils on the East Coast	E9	DSF	LNE, UNE
79	E21	<i>E. fibrosa–E. albens</i>	Eucalypt Woodland	EBWT	<i>Eucalyptus</i> Box Woodlands of the Tablelands and Western Slopes		TW	
80	U2	<i>E. seeana var. constricta</i>	Eucalypt Forest	SMGF	<i>Eucalyptus</i> Semi-Mesic Grassy Forests and Woodlands of the Eastern Tablelands and Coast on Soils of Moderate Fertility		TW	
81	E23	<i>E. maculata</i>	Eucalypt Forest	SMGF	<i>Eucalyptus</i> Semi-Mesic Grassy Forests and Woodlands of the Eastern Tablelands and Coast on Soils of Moderate Fertility	E9	DSF	UNE
82	E24	<i>E. tereticornis</i>	Eucalypt Forest	EFLMSC	<i>Eucalyptus</i> (Grassy or Shrubby) Forests on Low-Moderate Fertility Soils on the East Coast	E11	WSF	LNE, UNE
83	E25	<i>E. amplifolia</i>	Eucalypt Woodland	ESCT	<i>Eucalyptus</i> Swamp Communities of the Eastern Coast and Tablelands	E11E5	TW	LNE, UNE
84	E26	<i>E. siderophloia–E.moluccana</i>	Eucalypt Woodland	EBWC	<i>Eucalyptus</i> Box Woodlands of the East Coast Valleys		TW/SW	LNE, UNE
85	E27	<i>E. major–E. moluccana</i>	Eucalypt Forest	TWFEC	<i>Eucalyptus</i> Tall Mesic Shrub Forests of the Eastern Coastal Lowlands on Soils of High Fertility		WSF	UNE

ID	Code NC	VMU	Division (L.4 IVC)	Abbreviation	Macrogroup (VFG)	API code	Baur (1962) type	Region
86	E28	<i>E. pilularis</i> – <i>E. saligna</i>	Eucalypt Forest	TWFEC	<i>Eucalyptus</i> Tall Mesic Shrub Forests of the Eastern Coastal Lowlands on Soils of High Fertility	E6E703	WSF/DSF	UNE
87	E29	<i>E. pilularis</i> var. <i>pyriformis</i>	Eucalypt Forest	SMGF	<i>Eucalyptus</i> Semi-Mesic Grassy Forests and Woodlands of the Eastern Tablelands and Coast on Soils of Moderate Fertility	E61, E62	WSF	UNE
88	E30	<i>E. microcorys</i> – <i>E. saligna</i>	Eucalypt Forest	TWFEC	<i>Eucalyptus</i> Tall Mesic Shrub Forests of the Eastern Coastal Lowlands on Soils of High Fertility	E7	WSF/DSF	UNE
89	E31	<i>Lophostomon confertus</i> – <i>E. microcorys</i> – <i>E. grandis</i> –Rainforest	Eucalypt Forest	TWFEC	<i>Eucalyptus</i> Tall Mesic Shrub Forests of the Eastern Coastal Lowlands on Soils of High Fertility	E10E7	WSF	LNE, UNE
90	E32	<i>E. saligna</i>	Eucalypt Forest	TWFEC	<i>Eucalyptus</i> Tall Mesic Shrub Forests of the Eastern Coastal Lowlands on Soils of High Fertility	E7	WSF	LNE
91	E33	<i>E. benthamii</i>	Eucalypt Forest	ECT	<i>Eucalyptus</i> Mesic Forests of the Eastern Tablelands		WSF	UNE
92	E34	<i>E. campanulata</i>	Eucalypt Forest	SMGF	<i>Eucalyptus</i> Semi-Mesic Grassy Forests and Woodlands of the Eastern Tablelands and Coast on Soils of Moderate Fertility	E11E10	DSF	LNE, UNE
93	E35	<i>E. fastigata</i> – <i>E. obliqua</i>	Eucalypt Forest	ECT	<i>Eucalyptus</i> Mesic Forests of the Eastern Tablelands	E16E18	WSF/DSF	LNE, UNE
94	E36	<i>E. obliqua</i> – <i>E. viminalis</i>	Eucalypt Forest	ECT	<i>Eucalyptus</i> Mesic Forests of the Eastern Tablelands	E17E18	WSF	LNE, UNE
95	E37	<i>E. quadrangulata</i>	Eucalypt Woodland	EBWC	<i>Eucalyptus</i> Box Woodlands of the East Coast Valleys	E21	WSF/DSF	UNE
96	E38	<i>E. caliginosa</i> – <i>E. viminalis</i>	Eucalypt Forest	EWLFST	<i>Eucalyptus</i> (Grassy or Shrubby) Woodlands and Forests on Low Fertility Soils on the Eastern Tablelands	E17E20	WSF	LNE, UNE
97	E39	<i>E. viminalis</i> – <i>E. pauciflora</i>	Eucalypt Forest	SMGF	<i>Eucalyptus</i> Semi-Mesic Grassy Forests and Woodlands of the Eastern Tablelands and Coast on Soils of Moderate Fertility	E171E172	WSF/DSF	
98	E40	<i>E. pauciflora</i> – <i>E. stellulata</i>	Eucalypt Forest	EWLFST	<i>Eucalyptus</i> (Grassy or Shrubby) Woodlands and Forests on Low Fertility Soils on the Eastern Tablelands	E171	DSF/SW	LNE
99	E41	<i>E. caliginosa</i>	Eucalypt Forest	EWLFST	<i>Eucalyptus</i> (Grassy or Shrubby) Woodlands and Forests on Low Fertility Soils on the Eastern Tablelands	E11E14	SW	LNE, UNE
100	E42	<i>Eucalyptus acaciaeformis</i> – <i>E. radiata</i>	Eucalypt Forest	EWLFST	<i>Eucalyptus</i> (Grassy or Shrubby) Woodlands and Forests on Low Fertility Soils on the Eastern Tablelands	E16	DSF	
101	E43	<i>E. melliodora</i> – <i>E. albens</i> – <i>E. blakelyii</i>	Eucalypt Woodland	EBWT	<i>Eucalyptus</i> Box Woodlands of the Tablelands and Western Slopes	E21	DSF	LNE, UNE
102	E44	Rocky outcrops: forests, rainforests	Rainforest	RVRF	Rocky Outcrops: Rainforest and Wet Forests of the Coast and Eastern Tablelands	R	TW	UNE
103	E45	Rocky outcrops: woodlands, shrublands	Eucalypt Woodland	RVWS	Rocky Outcrops: woodlands or shrublands of the Coast and Eastern Tablelands	R	WSF/RF	UNE
104	E46	<i>E. campanulata</i>	Eucalypt Forest	SMGF	<i>Eucalyptus</i> Semi-Mesic Grassy Forests and Woodlands of the Eastern Tablelands and Coast on Soils of Moderate Fertility	E10E18	DSF/S	LNE
105	E47	<i>E. maculata</i> – <i>E. propinqua</i> – <i>E. crebra</i>	Eucalypt Forest	SMSF	<i>Eucalyptus</i> Semi-Mesic Shrub Forests and Woodlands of the Eastern Tablelands and Coast on Soils of Moderate Fertility	E9E8	DSF	LNE, UNE
106	E48	<i>E. propinqua</i> – <i>E. crebra</i> – <i>E. resinifera</i>	Eucalypt Forest	EFLMSC	<i>Eucalyptus</i> (Grassy or Shrubby) Forests on Low-Moderate Fertility Soils on the East Coast	E8E10	DGF	UNE
107	E49	<i>E. propinqua</i> – <i>E. crebra</i> – <i>E. resinifera</i>	Eucalypt Forest	SMGF	<i>Eucalyptus</i> Semi-Mesic Grassy Forests and Woodlands of the Eastern Tablelands and Coast on Soils of Moderate Fertility	E8E11	DSF	UNE
108	E50	<i>E. propinqua</i> – <i>E. microcorys</i> – <i>E. intermedia</i> – <i>Lomandra longifolia</i> – <i>Oplismenus imbecillus</i>	Eucalypt Forest	TWFEC	<i>Eucalyptus</i> Tall Mesic Shrub Forests of the Eastern Coastal Lowlands on Soils of High Fertility	E8E703	WSF/DSF	UNE

ID	Code NC	VMU	Division (L.4 IVC)	Abbreviation	Macrogroup (VFG)	API code	Baur (1962) type	Region
109	E51	<i>E. maculata</i> – <i>E. campanulata</i>	Eucalypt Forest	SMGF	<i>Eucalyptus</i> Semi-Mesic Grassy Forests and Woodlands of the Eastern Tablelands and Coast on Soils of Moderate Fertility	E9E19	WSF/DSF	
110	E52	<i>E. maculata</i> Types (a) and (b)	Eucalypt Forest	SMGF	<i>Eucalyptus</i> Semi-Mesic Grassy Forests and Woodlands of the Eastern Tablelands and Coast on Soils of Moderate Fertility	E9	DSF	
111	E53	<i>E. pilularis</i>	Eucalypt Forest	SMGF	<i>Eucalyptus</i> Semi-Mesic Grassy Forests and Woodlands of the Eastern Tablelands and Coast on Soils of Moderate Fertility	E11E6	DSF	LNE, UNE
112	E54	<i>E. tereticornis</i> – <i>Angophora subvelutina</i> – <i>Lophostemon suaveolens</i>	Eucalypt Forest	EWLFST	<i>Eucalyptus</i> (Grassy or Shrubby) Woodlands and Forests on Low Fertility Soils on the Eastern Tablelands	E10E11	TW	LNE, UNE
113	E55	<i>E. tereticornis</i> – <i>E. laevopinea</i>	Eucalypt Forest	SMGF	<i>Eucalyptus</i> Semi-Mesic Grassy Forests and Woodlands of the Eastern Tablelands and Coast on Soils of Moderate Fertility	E11E18	DSF	LNE
114	E56	<i>E. macrorhyncha</i> – <i>E. melliodora</i> – <i>E. albens</i>	Eucalypt Woodland	EBWT	<i>Eucalyptus</i> Box Woodlands of the Tablelands and Western Slopes	E20E21	WSF/DSF	LNE
115	E57	<i>Callitris endlicheri</i> – <i>E. melliodora</i>	Callitris Woodland	CPW	Callitris (Cypress Pine) Woodlands Mainly of the Inland Slopes and Plains	E14E22	DSF	LNE
116	E58	<i>Callitris endlicheri</i> – <i>E. macrorhyncha</i>	Callitris Woodland	CPW	Callitris (Cypress Pine) Woodlands Mainly of the Inland Slopes and Plains	E19	DSF	LNE
117	E59	<i>E. campanulata</i> – <i>E. blakelyi</i>	Eucalypt Forest	EWLFST	<i>Eucalyptus</i> (Grassy or Shrubby) Woodlands and Forests on Low Fertility Soils on the Eastern Tablelands	E19E21	DSF	LNE
118	E60	<i>E. propinqua</i> – <i>E. resinifera</i>	Eucalypt Forest	SMGF	<i>Eucalyptus</i> Semi-Mesic Grassy Forests and Woodlands of the Eastern Tablelands and Coast on Soils of Moderate Fertility	E10E8	DSF	LNE
119	E61	<i>E. signata</i> – <i>Banksia aemula</i> – <i>Leptospermum polygalifolium</i>	Eucalypt Woodland	EWHSC	<i>Eucalyptus</i> Heathy Woodlands on Low Fertility Soils on the East Coast	E13	WSF/DSF	LNE
120	E62	<i>E. nova-anglica</i> – <i>E. caliginosa</i>	Eucalypt Forest	EWLFST	<i>Eucalyptus</i> (Grassy or Shrubby) Woodlands and Forests on Low Fertility Soils on the Eastern Tablelands	E16E20	DSF	LNE, UNE
121	E63	<i>E. planchoniana</i> – <i>Angophora subvelutina</i>	Eucalypt Forest	SMGF	<i>Eucalyptus</i> Semi-Mesic Grassy Forests and Woodlands of the Eastern Tablelands and Coast on Soils of Moderate Fertility	E121E142	DSF	UNE
122	E64	<i>E. campanulata</i> – <i>E. cameronii</i>	Eucalypt Forest	ECT	<i>Eucalyptus</i> Mesic Forests of the Eastern Tablelands	E192E203	WSF	UNE
123	E65	<i>E. caliginosa</i> – <i>E. viminalis</i>	Eucalypt Forest	EWLFST	<i>Eucalyptus</i> (Grassy or Shrubby) Woodlands and Forests on Low Fertility Soils on the Eastern Tablelands	E201	WSF/DSF	LNE, UNE
124	E66	<i>E. propinqua</i> – <i>E. crebra</i> –rock outcrops	Eucalypt Forest	EWLFST	<i>Eucalyptus</i> (Grassy or Shrubby) Woodlands and Forests on Low Fertility Soils on the Eastern Tablelands	E8E10	DSF	UNE
125	E67	<i>E. caliginosa</i> – <i>E. laevopinea</i>	Eucalypt Forest	EWLFST	<i>Eucalyptus</i> (Grassy or Shrubby) Woodlands and Forests on Low Fertility Soils on the Eastern Tablelands	E182E201	DSF	LNE
126	E68	<i>E. fraxinioides</i> – <i>Pteridium esculentum</i> – <i>Dianella tasmanica</i> – <i>Leucopogon lanceolatis</i>	Eucalypt Forest	SMGF	<i>Eucalyptus</i> Semi-Mesic Grassy Forests and Woodlands of the Eastern Tablelands and Coast on Soils of Moderate Fertility	E152	WSF/DSF	UNE
127	E69	<i>E. melanophloia</i>	Eucalypt Forest	EFLMSC	<i>Eucalyptus</i> (Grassy or Shrubby) Forests on Low-Moderate Fertility Soils on the East Coast	E255	TW	UNE
128	E70	<i>Corymbia gummifera</i> – <i>Angophora costata</i>	Eucalypt Forest	EFLMSC	<i>Eucalyptus</i> (Grassy or Shrubby) Forests on Low-Moderate Fertility Soils on the East Coast	E142E141	DSF	UNE
129	E71	<i>Corymbia gummifera</i> – <i>Angophora costata</i>	Eucalypt Forest	EFLMSC	<i>Eucalyptus</i> (Grassy or Shrubby) Forests on Low-Moderate Fertility Soils on the East Coast	E14	DSF	LNE, UNE
130	E72	<i>E. oreades</i>	Eucalypt Forest	SMSF	<i>Eucalyptus</i> Semi-Mesic Shrub Forests and Woodlands of the Eastern Tablelands and Coast on Soils of Moderate Fertility	E15	WSF/DSF	LNE, UNE

ID	Code NC	VMU	Division (L.4 IVC)	Abbreviation	Macrogroup (VFG)	API code	Baur (1962) type	Region
131	E73	<i>Callitris collumellaris</i>	Callitris Woodland	CPW	Callitris (Cypress Pine) Woodlands Mainly of the Inland Slopes and Plains	F	TW	UNE
132	E74	<i>Casuarina cunninghamiana</i>	Eucalypt Forest	RIFEC	Riparian Forests and Shrublands of the Eastern Coast and Tablelands (non-rainforest)	FR	DSF	UNE
133	E75	<i>E. nova-anglica</i> – <i>E. viminalis</i>	Eucalypt Forest	EWLFSF	<i>Eucalyptus</i> (Grassy or Shrubby) Woodlands and Forests on Low Fertility Soils on the Eastern Tablelands	E16	WSF/DSF	LNE, UNE
134	E76	<i>E. pauciflora</i> – <i>E. stellulata</i> – <i>E. nova-anglica</i>	Eucalypt Woodland	ESAW	<i>Eucalyptus</i> Subalpine Woodlands and Forests	E1701E1602	WSF/DSF	UNE
135	E77	<i>E. molucanna</i>	Eucalypt Woodland	EBWC	<i>Eucalyptus</i> Box Woodlands of the East Coast Valleys	E10E9		LNE, UNE
136	E78	Mallee Heath	Mallee Open Woodland	EMCT	Mallee Heaths and Shrublands of the East Coast and Tablelands	A		LNE, UNE
137	E79	<i>Eucalyptus macrocarpa</i> – <i>E. sideroxylon</i>	Eucalypt Woodland	EBWT	<i>Eucalyptus</i> Box Woodlands of the Tablelands and Western Slopes	E254	DSF	UNE
138	E80	<i>E. campanulate</i> –heathy understorey	Eucalypt Woodland	EWHSC	<i>Eucalyptus</i> Heathy Woodlands on Low Fertility Soils on the East Coast	E19S	DSF	UNE
139	E81	Semi-mesic <i>E. pilularis</i>	Eucalypt Forest	SMGF	<i>Eucalyptus</i> Semi-Mesic Grassy Forests and Woodlands of the Eastern Tablelands and Coast on Soils of Moderate Fertility	E6	WSF/DSF	UNE
140	E82	<i>E. intermedia</i>	Eucalypt Forest	SMSF	<i>Eucalyptus</i> Semi-Mesic Shrub Forests and Woodlands of the Eastern Tablelands and Coast on Soils of Moderate Fertility		WSF/DSF	LNE,UN E
141	E83	<i>E. carnea</i> – <i>E. siderophloia</i> – <i>Allocasuarina torulosa</i> – <i>Themeda triandra</i>	Eucalypt Forest	SMGF	<i>Eucalyptus</i> Semi-Mesic Grassy Forests and Woodlands of the Eastern Tablelands and Coast on Soils of Moderate Fertility	E8	WSF/DSF	LNE
142	E84	<i>Angophora costata</i> – <i>E. piperita</i>	Eucalypt Forest	EFLMSC	<i>Eucalyptus</i> (Grassy or Shrubby) Forests on Low-Moderate Fertility Soils on the East Coast	E12E14	DSF	LNE
143	E85	<i>E. maculata</i> –moist coastal complex	Eucalypt Forest	SMGF	<i>Eucalyptus</i> Semi-Mesic Grassy Forests and Woodlands of the Eastern Tablelands and Coast on Soils of Moderate Fertility	E7E9	WSF	LNE
144	E86	<i>E. pilularis</i> sub-type (a) and (b)	Eucalypt Forest	SMGF	<i>Eucalyptus</i> Semi-Mesic Grassy Forests and Woodlands of the Eastern Tablelands and Coast on Soils of Moderate Fertility		DSF	UNE
145	E87	<i>E. laevopinea</i> – <i>E. melliodora</i> – <i>E. blakelyi</i> – <i>E. polyanthemos</i>	Eucalypt Forest	SMSF	<i>Eucalyptus</i> Semi-Mesic Shrub Forests and Woodlands of the Eastern Tablelands and Coast on Soils of Moderate Fertility	E18E21	DSF	LNE
146	E88	Rainforest– <i>E. pauciflora</i> – <i>E. dalrympleana</i>	Rainforest	RCT	Rainforest: Cool Temperate	RE17E18Ex	TW–CTR	LNE
147	E89	<i>E. laevopinea</i> – <i>E. fastigata</i> – <i>E. tereticornis</i>	Eucalypt Forest	SMGF	<i>Eucalyptus</i> Semi-Mesic Grassy Forests and Woodlands of the Eastern Tablelands and Coast on Soils of Moderate Fertility	E18E11	DSF/WSF	LNE
148	E90	<i>E. laevopinea</i> – <i>E. viminalis</i>	Eucalypt Forest	ECT	<i>Eucalyptus</i> Mesic Forests of the Eastern Tablelands	E18	WSF	LNE
149	E91	<i>E. albens</i> – <i>Callitris glaucophylla</i>	Callitris Woodland	CPW	Callitris (Cypress Pine) Woodlands Mainly of the Inland Slopes and Plains	E21E23	E212E232	LNE
150	E92	<i>E. albens</i> – <i>E. sideroxylon</i>	Eucalypt Woodland	EBWT	<i>Eucalyptus</i> Box Woodlands of the Tablelands and Western Slopes	E21E25	E212E254	LNE
151	E93	<i>E. melliodora</i> – <i>E. albens</i> – <i>E. blakelyii</i>	Eucalypt Woodland	EBWT	<i>Eucalyptus</i> Box Woodlands of the Tablelands and Western Slopes	E21E14	E211EE213	LNE
152	E94	<i>E. stellulata</i> – <i>E. pauciflora</i>	Eucalypt Woodland	ESAW	<i>Eucalyptus</i> Subalpine Woodlands and Forests	E17E16		LNE
153	E95	<i>E. camaldulensis</i>	Eucalypt Woodland	EIW	<i>Eucalyptus</i> Communities of Inland Watercourses and Inner Floodplains	E24	TW	LNE
154	E96	<i>Callitris endlicheri</i> – <i>E. melliodora</i>	Callitris Woodland	CPW	Callitris (Cypress Pine) Woodlands Mainly of the Inland Slopes and Plains	E22E21	DSF	LNE

ID	Code NC	VMU	Division (L.4 IVC)	Abbreviation	Macrogroup (VFG)	API code	Baur (1962) type	Region
155	E97	<i>E. nova-anglica</i> – <i>E. dalrympleana</i>	Eucalypt Forest	EWLFST	<i>Eucalyptus</i> (Grassy or Shrubby) Woodlands and Forests on Low Fertility Soils on the Eastern Tablelands	E17E20	DSF/WSF	LNE
156	E98	<i>E. pilularis</i> – <i>Angophora costata</i>	Eucalypt Forest	EWLFST	<i>Eucalyptus</i> (Grassy or Shrubby) Woodlands and Forests on Low Fertility Soils on the Eastern Tablelands	E6E14	DSF	LNE
157	E99	Unclassified Mesic-semi-mesic Eucalypt forest–no API codes	Eucalypt Forest	SMSF	<i>Eucalyptus</i> Semi-Mesic Shrub Forests and Woodlands of the Eastern Tablelands and Coast on Soils of Moderate Fertility	E07E19	WSF	UNE
158	E100	<i>E. campanulata</i> – <i>Lophostemon confertus</i> – <i>E. microcorys</i>	Eucalypt Forest	TWFEC	<i>Eucalyptus</i> Tall Mesic Shrub Forests of the Eastern Coastal Lowlands on Soils of High Fertility	E1973		UNE
159	E101	<i>E. sideroxylon</i> – <i>E. dealbata</i> – <i>E. melliodora</i> – <i>E. macroryncha</i>	Eucalypt Woodland	EBWP	<i>Eucalyptus</i> Box (Mostly Grassy) Woodlands of the Inland Plains	E252E2103	DSF	LNE
160	E102	<i>Lantana camara</i> – <i>Acacia</i> spp. disturbed mesic eucalypt forest	Eucalypt Forest	RFCT	Regenerating Forests of the Coast and Tablelands	FwL	WSF	UNE
161	E103	<i>E. sieberi</i> – <i>E. viminalis</i>	Eucalypt Forest	SMGF	<i>Eucalyptus</i> Semi-Mesic Grassy Forests and Woodlands of the Eastern Tablelands and Coast on Soils of Moderate Fertility	E17E18	DSF	LNE
162	E104	<i>E. campanulata</i> – <i>E. michaeliana</i>	Eucalypt Forest	EWLFST	<i>Eucalyptus</i> (Grassy or Shrubby) Woodlands and Forests on Low Fertility Soils on the Eastern Tablelands	E192E112	WSF/DSF	LNE
163	E105	<i>E. molucanna</i> – <i>E. crebra</i>	Eucalypt Woodland	EBWC	<i>Eucalyptus</i> Box Woodlands of the East Coast Valleys	E10	TW	LNE
164	E106	<i>E. tereticornis</i> – <i>E. globoidea</i>	Eucalypt Forest	SMGF	<i>Eucalyptus</i> Semi-Mesic Grassy Forests and Woodlands of the Eastern Tablelands and Coast on Soils of Moderate Fertility	E9E12	TW	LNE
165	E107	<i>E. campanulata</i> – <i>E. andrewsii</i>	Eucalypt Forest	EWLFST	<i>Eucalyptus</i> (Grassy or Shrubby) Woodlands and Forests on Low Fertility Soils on the Eastern Tablelands	E192E16	WSF/DSF	LNE
166	E108	<i>E. blakeyilii</i> – <i>E. macroryncha</i>	Eucalypt Forest	EWLFST	<i>Eucalyptus</i> (Grassy or Shrubby) Woodlands and Forests on Low Fertility Soils on the Eastern Tablelands	E172E202	TW	LNE
167	E109	<i>E. maculata</i> – <i>Angophora floribunda</i>	Eucalypt Forest	EFLMSC	<i>Eucalyptus</i> (Grassy or Shrubby) Forests on Low-Moderate Fertility Soils on the East Coast	E14E9	DSF	LNE
168	E110	<i>E. blakeyilii</i> – <i>E. melliodora</i>	Eucalypt Woodland	EBWT	<i>Eucalyptus</i> Box Woodlands of the Tablelands and Western Slopes	E17E21	TW	LNE
169	E111	<i>E. rummeryi</i> – <i>E. largeana</i>	Eucalypt Forest	TWFEC	<i>Eucalyptus</i> Tall Mesic Shrub Forests of the Eastern Coastal Lowlands on Soils of High Fertility	E10	WSF	LNE
170	E112	<i>E. tereticornis</i> – <i>E. maculata</i>	Eucalypt Forest	EFLMSC	<i>Eucalyptus</i> (Grassy or Shrubby) Forests on Low-Moderate Fertility Soils on the East Coast	E11E9	DSF	LNE
171	E113	<i>Callitris endlicheri</i> – <i>E. maculata</i>	Callitris Woodland	CPW	Callitris (Cypress Pine) Woodlands Mainly of the Inland Slopes and Plains	E9AS	DSF	LNE
172	E114	<i>Corymbia maculata</i> – <i>E. melliodora</i>	Eucalypt Forest	EFLMSC	<i>Eucalyptus</i> (Grassy or Shrubby) Forests on Low-Moderate Fertility Soils on the East Coast	E21E9	DSF	LNE
173	E115	<i>E. signata</i> – <i>Corymbia gummifera</i>	Eucalypt Woodland	EWHS	<i>Eucalyptus</i> Heathy Woodlands on Low Fertility Soils on the East Coast	E13E14	DSF	LNE
174	E116	<i>E. melliodora</i> – <i>E. radiata</i>	Eucalypt Woodland	EBWT	<i>Eucalyptus</i> Box Woodlands of the Tablelands and Western Slopes	E16E21	DSF	LNE
175	E117	<i>Angophora subvelutina</i>	Eucalypt Forest	SMGF	<i>Eucalyptus</i> Semi-Mesic Grassy Forests and Woodlands of the Eastern Tablelands and Coast on Soils of Moderate Fertility	E14	WSF/DSF	LNE
176	E118	<i>E. melliodora</i> – <i>E. campanulata</i>	Eucalypt Forest	SMGF	<i>Eucalyptus</i> Semi-Mesic Grassy Forests and Woodlands of the Eastern Tablelands and Coast on Soils of Moderate Fertility	E21E19	WSF/DSF	LNE
177	E119	<i>E. caliginosa</i> – <i>E. campanulata</i>	Eucalypt Forest	SMGF	<i>Eucalyptus</i> Semi-Mesic Grassy Forests and Woodlands of the Eastern Tablelands and Coast on Soils of Moderate Fertility	E20E19	DSF	

ID	Code NC	VMU	Division (L.4 IVC)	Abbreviation	Macrogroup (VFG)	API code	Baur (1962) type	Region
178	E120	<i>E. campanulata</i> – <i>Angophora floribunda</i>	Eucalypt Forest	SMGF	<i>Eucalyptus</i> Semi-Mesic Grassy Forests and Woodlands of the Eastern Tablelands and Coast on Soils of Moderate Fertility	E14E6	DSF	LNE
179	E121	<i>Angophora floribunda</i> – <i>E. melliodora</i>	Eucalypt Woodland	EBWT	<i>Eucalyptus</i> Box Woodlands of the Tablelands and Western Slopes	E14E21	TW	LNE
180	E122	<i>E. caliginosa</i> – <i>E. pauciflora</i>	Eucalypt Forest	EWLFST	<i>Eucalyptus</i> (Grassy or Shrubby) Woodlands and Forests on Low Fertility Soils on the Eastern Tablelands	E20E17	DSF	LNE
181	E123	<i>Corymbia maculata</i> – <i>E. globoidea</i>	Eucalypt Forest	EFLMSC	<i>Eucalyptus</i> (Grassy or Shrubby) Forests on Low-Moderate Fertility Soils on the East Coast	E12E9	DSF	LNE
182	E124	<i>E. microcarpa</i> – <i>E. youmanii</i>	Eucalypt Woodland	EBWP	<i>Eucalyptus</i> Box (Mostly Grassy) Woodlands of the Inland Plains	E25E20	TW	LNE
183	E125	<i>E. microcorys</i> – <i>Lophostemon confertus</i>	Eucalypt Forest	TWFEC	<i>Eucalyptus</i> Tall Mesic Shrub Forests of the Eastern Coastal Lowlands on Soils of High Fertility	E73	WSF	
184	E126	<i>E. deanei</i>	Eucalypt Forest	ECT	<i>Eucalyptus</i> Mesic Forests of the Eastern Tablelands		WSF/DSF	
185	E127	<i>E. dorriigoensis</i>	Eucalypt Forest	SMGF	<i>Eucalyptus</i> Semi-Mesic Grassy Forests and Woodlands of the Eastern Tablelands and Coast on Soils of Moderate Fertility	E173	WSF/DSF	
186	E128	<i>E. camphora</i>	Eucalypt Woodland	ESCT	<i>Eucalyptus</i> Swamp Communities of the Eastern Coast and Tablelands	E176	SSF	
187	E129	<i>E. tereticornis</i> – <i>Melaleuca quinquinervia</i>	Eucalypt Forest	SMGF	<i>Eucalyptus</i> Semi-Mesic Grassy Forests and Woodlands of the Eastern Tablelands and Coast on Soils of Moderate Fertility	E11FP	DSF/SSF	
188	S01	Shrubland: <i>Acacia sophora</i> –foredunes	AcaciaShrubland	CSD	Coastal Sand Dune Grasslands, Forblands and Shrublands	S		UNE
189	S02	<i>Avicennia marina</i> –mangrove flats	Saline Wetland	SWM	Saline Wetlands: Mangrove Mudflats	A		LNE
190	S03	Heathland: montane (inland NE escarpment)	Temperate Heathland	HSOT	Heaths on Siliceous Outcrops on the Tablelands and Western Slopes of South-eastern Australia	S		UNE
191	S04	Shrubland: <i>Banksia integrifolia</i> (hind dunes)	AcaciaShrubland	CSD	Coastal Sand Dune Grasslands, Forblands and Shrublands	A		LNE, UNE
192	S05	Heathland: not classified	Not classified	NCL	Not classified	AS		
193	S06	Heathland: <i>Allocasuarina nana</i>	Temperate Heathland	HSOT	Heaths on Siliceous Outcrops on the Tablelands and Western Slopes of South-eastern Australia	S		LNE
194	S07	Heathland: dry heaths	AcaciaShrubland	CSD	Coastal Sand Dune Grasslands, Forblands and Shrublands	S		LNE, UNE
195	S08	Heathland: wet heaths	Temperate Heathland	HSCS	Heaths and Shrublands on Coastal Sands	S		LNE, UNE
196	S09	Low Forest: <i>Allocasuarina nana</i>	Not classified	NCL	Not classified	S		
197	S10	Heathland: <i>Banksia aemula</i>	Temperate Heathland	HSCS	Heaths and Shrublands on Coastal Sands	S		UNE
198	S11	Shrubland: <i>Leptospermum laevigatum</i>	AcaciaShrubland	CSD	Coastal Sand Dune Grasslands, Forblands and Shrublands	S		UNE
199	S12	Shrubland: Coastal scrub (unclassified)	Temperate Heathland	HSCS	Heaths and Shrublands on Coastal Sands	S		UNE
200	S13	Sedgeland: inland and coastal	Freshwater Wetland	FWSS	Freshwater Wetlands: East Coast and Tablelands Sedgeland Swamps	A		LNE, UNE
201	S14	Swamp complex: unclassified	Freshwater Wetland	FWSS	Freshwater Wetlands: East Coast and Tablelands Sedgeland Swamps	S		LNE, UNE
202	S15	Estuarine Complex: unclassified	Saline Wetland	SWSM	Saline Wetlands: Coastal Salt-marsh	AS		UNE
203	S16	<i>Melaleuca quinquinervia</i> Low Forest	Freshwater Wetland	FWECF	Freshwater Wetlands: Coastal Swamp Forests and Shrublands	A		LNE, UNE
204	S17	<i>Melaleuca Quinquinervia</i> – <i>E. robusta</i>	Freshwater Wetland	FWECF	Freshwater Wetlands: Coastal Swamp Forests and Shrublands	Fp		LNE
205	S18	<i>Melaleuca linearifolia</i> – <i>M. nodosa</i>	Freshwater Wetland	FWSS	Freshwater Wetlands: East Coast and Tablelands Sedgeland Swamps	Fp		LNE
206	S19	<i>Melaleuca Quinquinervia</i> – <i>Casuarina glauca</i>	Freshwater Wetland	FWECF	Freshwater Wetlands: Coastal Swamp Forests and Shrublands	Fp		LNE

ID	Code NC	VMU	Division (L.4 IVC)	Abbreviation	Macrogroup (VFG)	API code	Baur (1962) type	Region
207	S20	Sedgeland: unclassified	Freshwater Wetland	FWSS	Freshwater Wetlands: East Coast and Tablelands Sedgeland Swamps	AFp		LNE
208	S21	Rocky Outcrops: Forests–Shrublands	Eucalypt Woodland	RVWS	Rocky Outcrops: Woodlands or Shrublands of the Coast and Eastern Tablelands	Fp		LNE
209	S22	Highland Swamps	Freshwater Wetland	FWSS	Freshwater Wetlands: East Coast and Tablelands Sedgeland Swamps	S		LNE
208	S21	Rocky Outcrops: Forests–Shrublands	Eucalypt Woodland	RVWS	Rocky Outcrops: Woodlands or Shrublands of the Coast and Eastern Tablelands	Fp		LNE
209	S22	Highland Swamps	Freshwater Wetland	FWSS	Freshwater Wetlands: East Coast and Tablelands Sedgeland Swamps	S		LNE
210	S23	<i>Gahnia clarkei</i> – <i>Gleichenia dicarpa</i>	Freshwater Wetland	FWSS	Freshwater Wetlands: East Coast and Tablelands Sedgeland Swamps	S		LNE
211	S24	<i>Schoenus brevifolius</i>	Freshwater Wetland	FWSS	Freshwater Wetlands: East Coast and Tablelands Sedgeland Swamps	S		LNE
212	S25	Teat Tree–swamps (coastal)	Freshwater Wetland	FWECSE	Freshwater Wetlands: Coastal Swamp Forests and Shrublands	S		LNE
213	S26	<i>Elaeocharis</i> spp. wetlands	Saline Wetland	SWCBL	Saline Wetlands: Coastal Brackish Lakes	S		LNE
214	S27	Montane Heathland	Temperate Heathland	HSOT	Heaths on Siliceous Outcrops on the Tablelands and Western Slopes of South-eastern Australia	S		LNE
215	S28	Highland Swamps	Freshwater Wetland	FWSS	Freshwater Wetlands: East Coast and Tablelands Sedgeland Swamps	A		LNE
216	S29	<i>Posidonia</i> spp. wetland	Saline Wetland	SWSG	Saline Wetlands: Seagrass Meadows	A		LNE
217	S30	<i>Leptocarpus tenax</i> – <i>Restio pallens</i>	Freshwater Wetland	FWMB	Freshwater Wetlands: Montane Bogs and Fens	S		LNE
218	S31	<i>Juncus kraussii</i> – <i>Phragmites australis</i>	Freshwater Wetland	FWACL	Freshwater Wetlands: Aquatic communities of Coastal Lakes, Lagoons and Rivers	S		LNE
219	S32	<i>Lepironia australis</i> wetland	Freshwater Wetland	FWACL	Freshwater Wetlands: Aquatic communities of Coastal Lakes, Lagoons and Rivers	S		LNE
220	U1	Vegetation: unknown	Not classified	NCL	Not classified			LNE, UNE
221	U2	Vegetation: not classified	Not classified	NCL	Not classified			LNE, UNE
223	W01	Wetland: brackish lakes	Saline Wetland	SWM	Saline Wetlands: Mangrove Mudflats	SZ		LNE
224	W02	Wetland: mangrove mud flats	Saline Wetland	SWM	Saline Wetlands: Mangrove Mudflats	Y		LNE, UNE
225	W03	Wetland: saline estuaries	Saline Wetland	SWCBL	Saline Wetlands: Coastal Brackish Lakes	A		LNE, UNE
226	W04	Wetland: river beds–ephemeral inundation	Freshwater Wetland	FWI	Freshwater Wetlands: Inland Aquatic, Swamp and Shrubland Communities			
227	W05	Water: Rivers	Freshwater Wetland	FWACL	Freshwater Wetlands: Aquatic communities of Coastal Lakes, Lagoons and Rivers	A		LNE, UNE
228	W06	Wetland: inland water bodies	Freshwater Wetland	FWACL	Freshwater Wetlands: Aquatic communities of Coastal Lakes, Lagoons and Rivers	A		LNE, UNE
229	W07	Water: Oceans	Water Bodies	WBO	Water Bodies: Oceans	A		LNE, UNE
230	W08	Wetland: inland freshwater lakes	Saline Wetland	SWSM	Saline Wetlands: Coastal Salt-marsh	A		LNE, UNE
231	W09	Saltmarsh–unclassified	Saline Wetland	SWSM	Saline Wetlands: Coastal Salt-marsh	A		LNE
232	W10	Wetlands: coastal estuarine	Freshwater Wetland	FWACL	Freshwater Wetlands: Aquatic communities of Coastal Lakes, Lagoons and Rivers	A		LNE
233	W11	Saltmarsh	Saline Wetland	SWSM	Saline Wetlands: Coastal Salt-marsh	AS		LNE, UNE
234	X1	Introduced: wattles	Exotic Forests	XAC	Exotic: Acacia forests			UNE

ID	Code NC	VMU	Division (L.4 IVC)	Abbreviation	Macrogroup (VFG)	API code	Baur (1962) type	Region
235	X2	Introduced: wattles-lantana	Exotic Forests	RX	Rainforest: exotics dominated	AL		LNE
236	X3	Introduced other species-Camphor Laurel	Exotic Forests	RX	Rainforest: exotics dominated	C		LNE
237	X4	Wattles: Urban Bushland	Exotic Forests	XAC	Exotic: Acacia forests	Fw		UNE

Table S6. Reclassified VMUs (L.5 IVC), macrogroups (vegetation formation groups, VFGs) and division for EBD in the SBCW mapping region

Number	VMU	Division (L.4 IVC)	Abbreviation	Macrogroup (VFG)
1	<i>Callitris</i> (Cypress Pine) Woodlands Mainly of the Inland Slopes and Plains	Non-Eucalypt Woodland	CPW	<i>Callitris</i> (Cypress Pine) Woodlands Mainly of the Inland Slopes and Plains
2	<i>Eucalyptus</i> (Grassy or Shrubby) Eucalypt Forests on Low-Moderate Fertility Soils on the East Coast	Eucalypt Forest	EFLMSC	<i>Eucalyptus</i> (Grassy or Shrubby) Eucalypt Forests on Low-Moderate Fertility Soils on the East Coast
3	<i>Eucalyptus</i> (Grassy or Shrubby) Woodlands and Eucalypt Forests on Low Fertility Soils on the Eastern Tablelands	Eucalypt Forest	EWLFST	<i>Eucalyptus</i> (Grassy or Shrubby) Woodlands and Eucalypt Forests on Low Fertility Soils on the Eastern Tablelands
4	<i>Eucalyptus</i> (Grassy or Shrubby) Woodlands and Eucalypt Forests on Low Fertility Soils on the Western Slopes	Eucalypt Woodland	ESWWS	<i>Eucalyptus</i> (Grassy or Shrubby) Woodlands and Eucalypt Forests on Low Fertility Soils on the Western Slopes
5	<i>Eucalyptus</i> Box Woodlands of the East Coast Valleys	Eucalypt Woodland	EBWC	<i>Eucalyptus</i> Box Woodlands of the East Coast Valleys
6	<i>Eucalyptus</i> Box Woodlands of the Tablelands and Western Slopes	Eucalypt Woodland	EBWT	<i>Eucalyptus</i> Box Woodlands of the Tablelands and Western Slopes
7	<i>Eucalyptus</i> Communities of Inland Watercourses and Inner Floodplains	Eucalypt Woodland	EIW	<i>Eucalyptus</i> Communities of Inland Watercourses and Inner Floodplains
8	<i>Eucalyptus</i> Heathy Woodlands on Low Fertility Soils on the East Coast	Eucalypt Woodland	EWHSC	<i>Eucalyptus</i> Heathy Woodlands on Low Fertility Soils on the East Coast
9	<i>Eucalyptus</i> Mesic Eucalypt Forests of the Eastern Tablelands	Eucalypt Forest	ECT	<i>Eucalyptus</i> Mesic Eucalypt Forests of the Eastern Tablelands
10	<i>Eucalyptus</i> Semi-Mesic Grassy Eucalypt Forests and Woodlands of the Eastern Tablelands and Coast on Soils of Moderate Fertility	Eucalypt Forest	SMGF	<i>Eucalyptus</i> Semi-Mesic Grassy Eucalypt Forests and Woodlands of the Eastern Tablelands and Coast on Soils of Moderate Fertility
11	<i>Eucalyptus</i> Semi-Mesic Shrub Eucalypt Forests and Woodlands of the Eastern Tablelands and Coast on Soils of Moderate Fertility	Eucalypt Forest	SMSF	<i>Eucalyptus</i> Semi-Mesic Shrub Eucalypt Forests and Woodlands of the Eastern Tablelands and Coast on Soils of Moderate Fertility
13	<i>Eucalyptus</i> Tall Grassy Eucalypt Forests or Woodlands of the Eastern Coastal Lowlands on Soils of High Fertility	Eucalypt Forest	TGFEC	<i>Eucalyptus</i> Tall Grassy Eucalypt Forests or Woodlands of the Eastern Coastal Lowlands on Soils of High Fertility
14	<i>Eucalyptus</i> Tall Mesic Shrub Eucalypt Forests of the Eastern Coastal Lowlands on Soils of High Fertility	Eucalypt Forest	TWFEC	<i>Eucalyptus</i> Tall Mesic Shrub Eucalypt Forests of the Eastern Coastal Lowlands on Soils of High Fertility
15	<i>Eucalyptus</i> Woodlands on Rocky Hills of the Inland	Eucalypt Woodland	EWRIH	<i>Eucalyptus</i> Woodlands on Rocky Hills of the Inland
16	<i>Eucalyptus</i> Tall Mesic Shrub Eucalypt Forests of the Eastern Coastal Lowlands on Soils of High Fertility	Eucalypt Forest	TWFEC	<i>Eucalyptus</i> Tall Mesic Shrub Eucalypt Forests of the Eastern Coastal Lowlands on Soils of High Fertility
17	Exotic: Coniferous Eucalypt Forest plantation	Exotic Eucalypt Forests	XCP	Exotic: Coniferous Eucalypt Forest plantation
18	Freshwater Wetlands: Aquatic communities of Coastal Lakes, Lagoons and Rivers	Freshwater Wetland	FWACL	Freshwater Wetlands: Aquatic communities of Coastal Lakes, Lagoons and Rivers
19	Freshwater Wetlands: East Coast and Tablelands Sedgeland Swamps	Freshwater Wetland	FWSS	Freshwater Wetlands: East Coast and Tablelands Sedgeland Swamps
20	Grasslands of Freshwater Aquatic Habitats of Periodically Flooded Soils	Temperate Grassland	GFAPF	Grasslands of Freshwater Aquatic Habitats of Periodically Flooded Soils
21	Grasslands on Fine Texture Soils on the Inland Slopes and Plains	Temperate Grassland	GFTI	Grasslands on Fine Texture Soils on the Inland Slopes and Plains
22	Grasslands: exotic tussock	Temperate Grassland	GE	Grasslands: exotic tussock
23	Heaths and Shrublands on Coastal Sands	Heathland	HSCS	Heaths and Shrublands on Coastal Sands
24	Rainforest: Warm Temperate	Rainforest	RWT	Rainforest: Warm Temperate
25	Regenerating Eucalypt Forests of the Coast and Tablelands	Eucalypt Forest	RFCT	Regenerating Eucalypt Forests of the Coast and Tablelands
26	Riparian Eucalypt Forests and Shrublands of the Eastern Coast and Tablelands (non-Rainforest)	Eucalypt Forest	RIFEC	Riparian Eucalypt Forests and Shrublands of the Eastern Coast and Tablelands (non-Rainforest)
27	Rocky Outcrops: Woodlands or Shrublands of the Coast and Eastern Tablelands	Eucalypt Woodland	RVWS	Rocky Outcrops: Woodlands or Shrublands of the Coast and Eastern Tablelands
28	Vegetation: Not classified	Not classified	NCL	Not classified
29	Vegetation: Remnant vegetation in urban or rural corridors not classified	Not classified	NCU	Vegetation: Remnant vegetation in urban or rural areas not classified
30	Water Bodies: freshwater	Water Bodies	WAB	Water Bodies: freshwater
31	Water Bodies: saline estuaries	Water Bodies	WBI	Water Bodies: saline estuaries

Table S7. Summary table of VMUs, macrogroups (vegetation formation groups, VFGs) and divisions (L.4 IVC) for the Southern CRA sub-region of the South Coast and Tablelands Region

Number	VMU	Division (L.4 IVC)	Abbreviation	Macrogroup (VFG)	Classification
1	Southern Coastal Foothills Dry Shrub Eucalypt Forest: <i>E. sieberi</i>	Eucalypt Forest	EFLMSC	<i>Eucalyptus</i> (Grassy or Shrubby) Eucalypt Forests on Low-Moderate Fertility Soils on the East Coast	Numeric
2	Lowland Dry Shrub Eucalypt Forest: <i>Corymbia gummifera</i> – <i>Syncarpia glomulifera</i>	Eucalypt Forest	EFLMSC	<i>Eucalyptus</i> (Grassy or Shrubby) Eucalypt Forests on Low-Moderate Fertility Soils on the East Coast	Numeric
3	Northern Hinterland Shrub Dry Eucalypt Forest: <i>Syncarpia glomulifera</i> – <i>E. scias</i> ssp <i>callimastha</i>	Eucalypt Forest	EFLMSC	<i>Eucalyptus</i> (Grassy or Shrubby) Eucalypt Forests on Low-Moderate Fertility Soils on the East Coast	Numeric
4	Lowland Dry Shrub Eucalypt Forest: <i>Corymbia gummifera</i> – <i>Syncarpia glomulifera</i>	Eucalypt Forest	EFLMSC	<i>Eucalyptus</i> (Grassy or Shrubby) Eucalypt Forests on Low-Moderate Fertility Soils on the East Coast	Numeric
5	Jervis Bay Lowlands Shrub–Grass Dry Eucalypt Forest: mixed tree species	Eucalypt Forest	EFLMSC	<i>Eucalyptus</i> (Grassy or Shrubby) Eucalypt Forests on Low-Moderate Fertility Soils on the East Coast	Numeric
6	Southern Coastal Lowlands Shrub–Tussock Grass Dry Eucalypt Forest: <i>E. agglomerata</i> – <i>E. longifolia</i>	Eucalypt Forest	EFLMSC	<i>Eucalyptus</i> (Grassy or Shrubby) Eucalypt Forests on Low-Moderate Fertility Soils on the East Coast	Numeric
7	Southern Coastal Hinterland Shrub–Tussock Grass Dry Eucalypt Forest– <i>E. agglomerata</i> – <i>E. muelleriana</i>	Eucalypt Forest	EFLMSC	<i>Eucalyptus</i> (Grassy or Shrubby) Eucalypt Forests on Low-Moderate Fertility Soils on the East Coast	Numeric
8	Far Southern Coastal Shrub Dry Eucalypt Forest: <i>Eucalyptus sieberi</i> – <i>E. muelleriana</i> – <i>Allocasuarina littoralis</i> – <i>Hibbertia aspera</i> – <i>Platysace lanceolata</i>	Eucalypt Forest	EFLMSC	<i>Eucalyptus</i> (Grassy or Shrubby) Eucalypt Forests on Low-Moderate Fertility Soils on the East Coast	Numeric
9	Coastal Lowlands Cycad Dry Shrub Dry Eucalypt Forest: <i>Corymbia maculata</i> – <i>Macrozamia communis</i>	Eucalypt Forest	EFLMSC	<i>Eucalyptus</i> (Grassy or Shrubby) Eucalypt Forests on Low-Moderate Fertility Soils on the East Coast	Numeric
10	Southern Coastal Lowlands Shrub–Grass Dry Eucalypt Forest: <i>E. globoidea</i> – <i>E. longifolia</i>	Eucalypt Forest	EFLMSC	<i>Eucalyptus</i> (Grassy or Shrubby) Eucalypt Forests on Low-Moderate Fertility Soils on the East Coast	Numeric
11	Coastal Shrub–Grass Dry Eucalypt Forest: <i>E. botryoides</i> – <i>E. globoidea</i> – <i>Imperata cylindrica</i>	Eucalypt Forest	EFLMSC	<i>Eucalyptus</i> (Grassy or Shrubby) Eucalypt Forests on Low-Moderate Fertility Soils on the East Coast	Numeric
12	Coastal Hinterland (Buckenbowra) Shrub–Cycad Dry Eucalypt Forest: <i>Corymbia gummifera</i> – <i>Macrozamia communis</i>	Eucalypt Forest	EFLMSC	<i>Eucalyptus</i> (Grassy or Shrubby) Eucalypt Forests on Low-Moderate Fertility Soils on the East Coast	Numeric
13	Dry Gorge Shrub-grassy Eucalypt Forest: <i>Eucalyptus agglomerata</i> – <i>Angophora floribunda</i> – <i>Allocasuarina littoralis</i> – <i>Leucopogon juniperinus</i> – <i>Pomax umbellata</i>	Eucalypt Forest	EFLMSC	<i>Eucalyptus</i> (Grassy or Shrubby) Eucalypt Forests on Low-Moderate Fertility Soils on the East Coast	Numeric
14	Northern Coastal Hinterland Shrub–Grass Dry Eucalypt Forest: <i>E. fibrosa</i> – <i>Corymbia maculata</i>	Eucalypt Forest	EFLMSC	<i>Eucalyptus</i> (Grassy or Shrubby) Eucalypt Forests on Low-Moderate Fertility Soils on the East Coast	Numeric
15	North East Tableland Dry Shrub Eucalypt Forest: <i>E. sieberi</i>	Eucalypt Forest	EFLMSC	<i>Eucalyptus</i> (Grassy or Shrubby) Eucalypt Forests on Low-Moderate Fertility Soils on the East Coast	Numeric
16	Shoalhaven Gorge Dry Shrub Eucalypt Forest: <i>E. agglomerata</i> – <i>E. punctata</i> – <i>Dianella revoluta</i>	Eucalypt Forest	EFLMSC	<i>Eucalyptus</i> (Grassy or Shrubby) Eucalypt Forests on Low-Moderate Fertility Soils on the East Coast	Numeric
17	Kowmung Dry Shrub Eucalypt Forest: <i>E. punctata</i> – <i>Stypandra glauca</i>	Eucalypt Forest	EFLMSC	<i>Eucalyptus</i> (Grassy or Shrubby) Eucalypt Forests on Low-Moderate Fertility Soils on the East Coast	Numeric
18	Southern Coastal Hinterland Moist Shrub–Vine–Grass Eucalypt Forest: <i>E. cypellocarpa</i> – <i>E. muelleriana</i>	Eucalypt Forest	SMSF	<i>Eucalyptus</i> Semi-Mesic Shrub Eucalypt Forests and Woodlands of the Eastern Tablelands and Coast on Soils of Moderate Fertility	Numeric
19	Coastal Escarpment and Hinterland Dry Shrub–Fern Eucalypt Forest: <i>E. muelleriana</i>	Eucalypt Forest	SMSF	<i>Eucalyptus</i> Semi-Mesic Shrub Eucalypt Forests and Woodlands of the Eastern Tablelands and Coast on Soils of Moderate Fertility	Numeric
20	Coastal Hinterland Ecotonal Gully Eucalypt Forest	Eucalypt Forest	TWFEC	<i>Eucalyptus</i> Tall Mesic Shrub Eucalypt Forests of the Eastern Coastal Lowlands on Soils of High Fertility	Numeric
21	Northern Foothills Moist Shrub Eucalypt Forest: <i>C. maculata</i> – <i>E. pilularis</i>	Eucalypt Forest	TWFEC	<i>Eucalyptus</i> Tall Mesic Shrub Eucalypt Forests of the Eastern Coastal Lowlands on Soils of High Fertility	Numeric
22	Southern Coastal Hind Dune–Headland Scrub	Shrubland	CSD	Coastal Sand Dune Grasslands, Forblands and Shrublands	Numeric
23	Southern Coastal Dune Scrub Complex	Shrubland	CSD	Coastal Sand Dune Grasslands, Forblands and Shrublands	Numeric
24	Coastal Wet Heath Swamp Eucalypt Forest: <i>Casuarina glauca</i> – <i>Melaleuca ericifolia</i>	Freshwater Wetland	FWECSE	Freshwater Wetlands: Coastal Swamp Eucalypt Forests and Shrublands	Numeric
25	South Coast Swamp Eucalypt Forest Complex: <i>Casuarina glauca</i>	Freshwater Wetland	FWECSE	Freshwater Wetlands: Coastal Swamp Eucalypt Forests and Shrublands	Numeric
26	Coastal Dune Herb–Grassland	Shrubland	CSD	Coastal Sand Dune Grasslands, Forblands and Shrublands	Numeric
27	Ecotonal Coastal Swamp Eucalypt Forest: <i>Casuarina glauca</i> – <i>E. botryoides</i>	Freshwater Wetland	FWECSE	Freshwater Wetlands: Coastal Swamp Eucalypt Forests and Shrublands	Numeric
28	Coastal Sands Shrub–Fern Eucalypt Forest: <i>E. botryoides</i> – <i>Banksia serrata</i>	Eucalypt Forest	EFLMSC	<i>Eucalyptus</i> (Grassy or Shrubby) Eucalypt Forests on Low-Moderate Fertility Soils on the East Coast	Numeric

Number	VMU	Division (L4 IVC)	Abbreviation	Macrogroup (VFG)	Classification
29	Northern Coastal Sands Shrub–Fern Eucalypt Forest: <i>E. pilularis</i> – <i>Banksia serrata</i>	Eucalypt Forest	EFLMSC	<i>Eucalyptus</i> (Grassy or Shrubby) Eucalypt Forests on Low-Moderate Fertility Soils on the East Coast	Numeric
30	Jervis Bay Wet Eucalypt Forests: <i>E. botryoides</i> – <i>E. pilularis</i> – <i>Endiandra sieberi</i> – <i>Notelea longifolia</i> – <i>Endiandra sieberi</i> – <i>Livistona australis</i>	Eucalypt Forest	TWFEC	<i>Eucalyptus</i> Tall Mesic Shrub Eucalypt Forests of the Eastern Coastal Lowlands on Soils of High Fertility	Numeric
31	<i>E. viminalis</i> Shrub–Fern Herb–Grass Eucalypt Forest	Eucalypt Forest	EWLFST	<i>Eucalyptus</i> (Grassy or Shrubby) Woodlands and Eucalypt Forests on Low Fertility Soils on the Eastern Tablelands	Numeric
32	Escarpment Rocky Shrub Dry Eucalypt Forest	Eucalypt Woodland	RVWS	Rocky Outcrops: Woodlands or Shrublands of the Coast and Eastern Tablelands	Numeric
33	Hinterland Gully Head Shrub Eucalypt Forest: <i>E. smithii</i> – <i>E. paniculata</i> – <i>E. muelleriana</i> – <i>Beyeria lasiocarpa</i> – <i>Clematis aristata</i>	Eucalypt Forest	SMSF	<i>Eucalyptus</i> Semi-Mesic Shrub Eucalypt Forests and Woodlands of the Eastern Tablelands and Coast on Soils of Moderate Fertility	Numeric
34	Deua Ecotonal Shrub Eucalypt Forest– <i>E. smithii</i> : <i>E. cypellocarpa</i> – <i>E. elata</i> – <i>Astrotriche latifolia</i> – <i>Notelaea venosa</i>	Eucalypt Woodland	RVWS	Rocky Outcrops: Woodlands or Shrublands of the Coast and Eastern Tablelands	Numeric
35	South Coast and Byadbo Acacia Scrubs: <i>Acacia sylvestris</i>	Shrubland	AST	<i>Acacia</i> Eucalypt Forests and Shrublands of the East Coast and Tablelands	Numeric
36	Montane–Sub-Alpine Dry Rocky Shrubland	Eucalypt Woodland	RVWS	Rocky Outcrops: Woodlands or Shrublands of the Coast and Eastern Tablelands	Numeric
37	Scabby Range Dry Shrub Woodland: <i>E. debeuzevillei</i> – <i>Leptospermum namadgiensis</i>	Alpine Complex	AHS	Alpine Woodlands, Heaths, and Shrublands	Numeric
38	Tableland Dry Heath Shrub–Herb–Grass Woodland: <i>E. goniocalyx</i> – <i>Calytrix tetragona</i>	Eucalypt Forest	EWLFST	<i>Eucalyptus</i> (Grassy or Shrubby) Woodlands and Eucalypt Forests on Low Fertility Soils on the Eastern Tablelands	Numeric
39	Tableland Herb–Grassland	Freshwater Wetland	FWSS	Freshwater Wetlands: East Coast and Tablelands Sedgeland Swamps	Numeric
40	Deua Ryolite Dry Shrub Eucalypt Forest: <i>E. stenostoma</i>	Eucalypt Woodland	RVWS	Rocky Outcrops: Woodlands or Shrublands of the Coast and Eastern Tablelands	Numeric
41	Lower Snowy Rain Shadow Woodland–Shrubland	Eucalypt Woodland	RVWS	Rocky Outcrops: Woodlands or Shrublands of the Coast and Eastern Tablelands	Numeric
42	Southern Blue Mountains Mallee Heath	Mallee Open Woodland	EMCT	Mallee Heaths and Shrublands of the East Coast and Tablelands	Numeric
43	Western Slopes Riparian Moist Sedge Woodland: <i>E. camaldulensis</i>	Eucalypt Woodland	EIW	<i>Eucalyptus</i> Communities of Inland Watercourses and Inner Floodplains	Numeric
44	Kowmung–Coxs Blue Mountains Shrub–Moist Herb Eucalypt Forest: <i>E. blaxlandii</i> – <i>E. punctata</i> – <i>Clematis aristata</i>	Eucalypt Forest	SMSF	<i>Eucalyptus</i> Semi-Mesic Shrub Eucalypt Forests and Woodlands of the Eastern Tablelands and Coast on Soils of Moderate Fertility	Numeric
45	Kowmung Moist Shrub–Herb Eucalypt Forest–various eucalypts	Eucalypt Forest	SMSF	<i>Eucalyptus</i> Semi-Mesic Shrub Eucalypt Forests and Woodlands of the Eastern Tablelands and Coast on Soils of Moderate Fertility	Numeric
46	Kowmung Dry Shrub–Herb Eucalypt Forest: <i>Eucalyptus punctata</i> – <i>Olearia viscidula</i> – <i>Indigofera australis</i>	Eucalypt Forest	EFLMSC	<i>Eucalyptus</i> (Grassy or Shrubby) Eucalypt Forests on Low-Moderate Fertility Soils on the East Coast	Numeric
47	Southern Escarpment Herb–Grass Moist Eucalypt Forest: <i>E. maidenii</i> – <i>E. globoidea</i>	Eucalypt Forest	SMSF	<i>Eucalyptus</i> Semi-Mesic Shrub Eucalypt Forests and Woodlands of the Eastern Tablelands and Coast on Soils of Moderate Fertility	Numeric
48	Coastal Lowlands Riparian Herb–Grass Eucalypt Forest–various eucalypts	Eucalypt Forest	RIFEC	Riparian Eucalypt Forests and Shrublands of the Eastern Coast and Tablelands (non-Rainforest)	Numeric
49	Southern Hinterland Shrub–Herb–Grass Riparian Eucalypt Forest: <i>Angophora floribunda</i> – <i>E. elata</i> – <i>Acacia mearnsii</i>	Eucalypt Forest	RIFEC	Riparian Eucalypt Forests and Shrublands of the Eastern Coast and Tablelands (non-Rainforest)	Numeric
50	Southern Escarpment Herb–Grass Dry Eucalypt Forest: <i>Angophora floribunda</i> – <i>E. tereticornis</i>	Eucalypt Forest	EFLMSC	<i>Eucalyptus</i> (Grassy or Shrubby) Eucalypt Forests on Low-Moderate Fertility Soils on the East Coast	Numeric
51	Araluen Acacia Herb–Grass Dry Eucalypt Forest: <i>E. melliodora</i> – <i>E. maidenii</i>	Eucalypt Forest	EFLMSC	<i>Eucalyptus</i> (Grassy or Shrubby) Eucalypt Forests on Low-Moderate Fertility Soils on the East Coast	Numeric
52	Bega Valley Shrub–Grass Eucalypt Forest: <i>E. tereticornis</i> – <i>Acacia mearnsii</i> – <i>Themeda triandra</i>	Eucalypt Forest	SMSF	<i>Eucalyptus</i> Semi-Mesic Shrub Eucalypt Forests and Woodlands of the Eastern Tablelands and Coast on Soils of Moderate Fertility	Numeric
53	Riparian Acacia Shrub–Grass–Herb Eucalypt Forest: <i>Casuarina cunninghamiana</i>	Eucalypt Forest	RIFEC	Riparian Eucalypt Forests and Shrublands of the Eastern Coast and Tablelands (non-Rainforest)	Numeric
54	Far Southern Grass–Herb Dry Eucalypt Forest–Woodland: <i>E. globoidea</i> – <i>E. tereticornis</i>	Eucalypt Forest	SMSF	<i>Eucalyptus</i> Semi-Mesic Shrub Eucalypt Forests and Woodlands of the Eastern Tablelands and Coast on Soils of Moderate Fertility	Numeric
55	Eastern Tableland Fern–Herb–Grass Moist Eucalypt Forest: <i>E. fastigata</i>	Eucalypt Forest	SMSF	<i>Eucalyptus</i> Semi-Mesic Shrub Eucalypt Forests and Woodlands of the Eastern Tablelands and Coast on Soils of Moderate Fertility	Numeric
56	Tableland and Escarpment Moist Herb–Fern Grass Eucalypt Forest: <i>E. radiata</i> – <i>E. viminalis</i> – <i>Viola</i> spp.	Eucalypt Forest	SMSF	<i>Eucalyptus</i> Semi-Mesic Shrub Eucalypt Forests and Woodlands of the Eastern Tablelands and Coast on Soils of Moderate Fertility	Numeric

Number	VMU	Division (L4 IVC)	Abbreviation	Macrogroup (VFG)	Classification
57	Southern Escarpment Shrub–Fern–Herb Moist Eucalypt Forest: <i>E. cypellocarpa</i> – <i>E. fastigata</i> – <i>E. obliqua</i>	Eucalypt Forest	ECT	<i>Eucalyptus</i> Mesic Eucalypt Forests of the Eastern Tablelands	Numeric
58	Tableland and Escarpment Wet Layered Shrub Eucalypt Forest: <i>E. fastigata</i> – <i>Olearia argophylla</i> – <i>Dicksonia antarctica</i>	Eucalypt Forest	ECT	<i>Eucalyptus</i> Mesic Eucalypt Forests of the Eastern Tablelands	Numeric
59	Eastern Tableland and Escarpment Shrub–Fern Dry Eucalypt Forest: <i>E. radiata</i> – <i>E. sieberi</i> – <i>Leucopogon lanceolatus</i>	Eucalypt Forest	EWLFST	<i>Eucalyptus</i> (Grassy or Shrubby) Woodlands and Eucalypt Forests on Low Fertility Soils on the Eastern Tablelands	Numeric
60	Southern Blue Mountains Dry Shrub Eucalypt Forest: <i>E. sieberi</i>	Eucalypt Forest	EWLFST	<i>Eucalyptus</i> (Grassy or Shrubby) Woodlands and Eucalypt Forests on Low Fertility Soils on the Eastern Tablelands	Numeric
61	Southern Escarpment Edge Moist Shrub Eucalypt Forest: <i>E. fraxinoides</i>	Eucalypt Forest	SMSF	<i>Eucalyptus</i> Semi-Mesic Shrub Eucalypt Forests and Woodlands of the Eastern Tablelands and Coast on Soils of Moderate Fertility	Numeric
62	Southern Escarpment Edge Moist Shrub–Fern Eucalypt Forest: <i>E. fraxinoides</i> – <i>E. cypellocarpa</i>	Eucalypt Forest	SMSF	<i>Eucalyptus</i> Semi-Mesic Shrub Eucalypt Forests and Woodlands of the Eastern Tablelands and Coast on Soils of Moderate Fertility	Numeric
63	Southern Blue Mountains Plateau Acacia–Fern–Herb Moist Eucalypt Forest: <i>E. fastigata</i> – <i>E. dalrympleana</i> – <i>Acacia falciformis</i>	Eucalypt Forest	SMSF	<i>Eucalyptus</i> Semi-Mesic Shrub Eucalypt Forests and Woodlands of the Eastern Tablelands and Coast on Soils of Moderate Fertility	Numeric
64	Southern East Tableland Edge Shrub–Grass Dry Eucalypt Forest: <i>E. dalrympleana</i> – <i>E. radiata</i>	Eucalypt Forest	EWLFST	<i>Eucalyptus</i> (Grassy or Shrubby) Woodlands and Eucalypt Forests on Low Fertility Soils on the Eastern Tablelands	Numeric
65	Southern Escarpment Edge Moist Heath Eucalypt Forest: <i>Oxylobium ellipticum</i>	Heathland	HSOT	Heaths on Siliceous Outcrops on the Tablelands and Western Slopes of South-eastern Australia	Numeric
66	Eastern Tablelands Shrub–Grass Moist Eucalypt Forest: <i>E. radiata</i> – <i>E. dalrympleana</i> – <i>Poa sieberiana</i> – <i>Daviesia ulicifolia</i>	Eucalypt Forest	EWLFST	<i>Eucalyptus</i> (Grassy or Shrubby) Woodlands and Eucalypt Forests on Low Fertility Soils on the Eastern Tablelands	Numeric
67	Northern Plateaux Moist Fern–Herb–Grass Eucalypt Forest: <i>E. fastigata</i> – <i>E. dalrympleana</i> – <i>Acacia melanoxylon</i> – <i>Pteridium esculentum</i>	Eucalypt Forest	ECT	<i>Eucalyptus</i> Mesic Eucalypt Forests of the Eastern Tablelands	Numeric
68	North East Tablelands Shrub–Herb–Grass Dry Eucalypt Forest: <i>E. radiata</i> – <i>E. viminalis</i> – <i>Lomandra longifolia</i>	Eucalypt Forest	SMGF	<i>Eucalyptus</i> Semi-Mesic Grassy Eucalypt Forests and Woodlands of the Eastern Tablelands and Coast on Soils of Moderate Fertility	Numeric
69	Eastern Tablelands Damp Heath: <i>Epacris microphylla</i> ssp. <i>microphylla</i> – <i>Schoenus apogon</i>	Eucalypt Forest	SMGF	<i>Eucalyptus</i> Semi-Mesic Grassy Eucalypt Forests and Woodlands of the Eastern Tablelands and Coast on Soils of Moderate Fertility	Numeric
70	Western Escarpment Dry Shrub Eucalypt Forest: <i>E. dives</i> – <i>Xanthorrhoea australis</i> – <i>Platylobium formosum</i>	Eucalypt Forest	EWLFST	<i>Eucalyptus</i> (Grassy or Shrubby) Woodlands and Eucalypt Forests on Low Fertility Soils on the Eastern Tablelands	Numeric
71	Western Tableland Dry Shrub Eucalypt Forest: <i>E. macrorhyncha</i> – <i>Leptospermum brevipes</i>	Eucalypt Forest	EWLFST	<i>Eucalyptus</i> (Grassy or Shrubby) Woodlands and Eucalypt Forests on Low Fertility Soils on the Eastern Tablelands	Numeric
72	Southern Numeralla Dry Shrub Eucalypt Forest: <i>E. dives</i> – <i>E. radiata</i> – <i>Bursaria lasiophylla</i>	Eucalypt Forest	EWLFST	<i>Eucalyptus</i> (Grassy or Shrubby) Woodlands and Eucalypt Forests on Low Fertility Soils on the Eastern Tablelands	Numeric
73	Eastern Tableland Dry Shrub–Grass Eucalypt Forest: <i>E. pauciflora</i> – <i>E. viminalis</i> – <i>Acacia dealbata</i> – <i>Themeda triandra</i>	Eucalypt Forest	EWLFST	<i>Eucalyptus</i> (Grassy or Shrubby) Woodlands and Eucalypt Forests on Low Fertility Soils on the Eastern Tablelands	Numeric
74	South Eastern Tablelands Dry Shrub–Grass–Herb Eucalypt Forest: <i>E. bridgesiana</i> – <i>E. pauciflora</i> – <i>E. rubida</i> – <i>Acaena novae-zealandiae</i>	Eucalypt Forest	EWLFST	<i>Eucalyptus</i> (Grassy or Shrubby) Woodlands and Eucalypt Forests on Low Fertility Soils on the Eastern Tablelands	Numeric
75	Tablelands Shrub–Tussock Grass Eucalypt Forest: <i>E. dives</i> – <i>Rytidosperma pallidum</i>	Eucalypt Forest	EWLFST	<i>Eucalyptus</i> (Grassy or Shrubby) Woodlands and Eucalypt Forests on Low Fertility Soils on the Eastern Tablelands	Numeric
76	Central Tablelands Shrub–Grass Dry Eucalypt Forest: <i>E. rubida</i> – <i>E. pauciflora</i> – <i>Themeda triandra</i>	Eucalypt Forest	SMGF	<i>Eucalyptus</i> Semi-Mesic Grassy Eucalypt Forests and Woodlands of the Eastern Tablelands and Coast on Soils of Moderate Fertility	Numeric
77	Lower Snowy Dry Shrub–Tussock Grass Eucalypt Forest: <i>E. goniocalyx</i> – <i>Rytidosperma pallidum</i>	Eucalypt Woodland	EBWT	<i>Eucalyptus</i> Box Woodlands of the Tablelands and Western Slopes	Numeric
78	Lower Snowy White Box Dry Shrub–Herb Woodland: <i>E. albens</i> – <i>Callitris glaucophylla</i> – <i>Acacia deanei</i>	Eucalypt Woodland	EBWT	<i>Eucalyptus</i> Box Woodlands of the Tablelands and Western Slopes	Numeric
79	Montane Dry Shrub–Tussock Grass Eucalypt Forest: <i>E. nortonii</i> – <i>Cassinia longifolia</i> – <i>Rytidosperma pallida</i>	Callitris Woodland	CPW	<i>Callitris</i> (Cypress Pine) Woodlands Mainly of the Inland Slopes and Plains	Numeric
80	ACT Dry Shrub–Herb Eucalypt Forest: <i>E. dives</i> – <i>E. bridgesiana</i> – <i>Cassinia longifolia</i> – <i>Hydrocotyle laxiflora</i>	Eucalypt Woodland	EBWT	<i>Eucalyptus</i> Box Woodlands of the Tablelands and Western Slopes	Numeric
81	Eastern Dry Shrub–Herb–Grass Eucalypt Forest: <i>E. bridgesiana</i> – <i>E. dives</i> – <i>Bursaria spinosa</i> – <i>Poa sieberiana</i>	Eucalypt Woodland	EBWT	<i>Eucalyptus</i> Box Woodlands of the Tablelands and Western Slopes	Numeric
82	Western Montane Acacia Fern–Herb Eucalypt Forest: <i>E. viminalis</i> – <i>E. robertsonii</i> – <i>Cassinia aculeata</i> – <i>Pteridium esculentum</i>	Eucalypt Forest	SMSF	<i>Eucalyptus</i> Semi-Mesic Shrub Eucalypt Forests and Woodlands of the Eastern Tablelands and Coast on Soils of Moderate Fertility	Numeric

Number	VMU	Division (L4 IVC)	Abbreviation	Macrogroup (VFG)	Classification
83	Montane Riparian Moist Shrub–Grass–Herb Eucalypt Forest: <i>E. dalrympleana</i> – <i>E. robertsonii</i> – <i>Acacia melanoxylon</i> – <i>Microlaena stipoides</i>	Eucalypt Forest	RIFEC	Riparian Eucalypt Forests and Shrublands of the Eastern Coast and Tablelands (non-Rainforest)	Numeric
84	Montane Wet Heath–Herb Woodland: <i>Leptospermum grandifolium</i> – <i>Blechnum penna-marina</i>	Eucalypt Forest	SMGF	<i>Eucalyptus</i> Semi-Mesic Grassy Eucalypt Forests and Woodlands of the Eastern Tablelands and Coast on Soils of Moderate Fertility	Numeric
85	Montane Riparian Moist Shrub–Sedge–Grass Eucalypt Forest: <i>E. dalrympleana</i> – <i>E. viminalis</i> – <i>Leptospermum lanigerum</i> – <i>Poa helmsii</i>	Eucalypt Forest	RIFEC	Riparian Eucalypt Forests and Shrublands of the Eastern Coast and Tablelands (non-Rainforest)	Numeric
86	Western Sub-alpine Moist Shrub Eucalypt Forest: <i>E. delegatensis</i> – <i>E. pauciflora</i> – <i>Polyscias sambucifolia</i> – <i>Tasmannia lanceolata</i>	Eucalypt Forest	TDSFEC	<i>Eucalyptus</i> Tall Dry Shrub Eucalypt Forests and Woodlands of the Eastern Tablelands and Coastal Lowlands on Soils of High Fertility	Numeric
87	Western Escarpment Moist Shrub–Herb–Grass Eucalypt Forest: <i>E. delegatensis</i> – <i>E. dalrympleana</i> – <i>Derwentia derwentiana</i> – <i>Stellaria pungens</i>	Eucalypt Forest	TDSFEC	<i>Eucalyptus</i> Tall Dry Shrub Eucalypt Forests and Woodlands of the Eastern Tablelands and Coastal Lowlands on Soils of High Fertility	Numeric
88	Bogong Gum Western Escarpment Shrub–Grass Eucalypt Forest: <i>E. chapmaniana</i> – <i>Daviesia latifolia</i>	Eucalypt Forest	SMSF	<i>Eucalyptus</i> Semi-Mesic Shrub Eucalypt Forests and Woodlands of the Eastern Tablelands and Coast on Soils of Moderate Fertility	Numeric
89	Eastern Tablelands Acacia–Herb–Grass Eucalypt Forest: <i>E. dalrympleana</i> – <i>E. viminalis</i> – <i>Acacia melanoxylon</i> – <i>Stellaria pungens</i>	Eucalypt Forest	SMSF	<i>Eucalyptus</i> Semi-Mesic Shrub Eucalypt Forests and Woodlands of the Eastern Tablelands and Coast on Soils of Moderate Fertility	Numeric
90	Northern Tablelands Acacia Herb–Grass Dry Eucalypt Forest: <i>E. bridgesiana</i> – <i>Acacia dealbata</i> – <i>Hydrocotyle laxiflora</i>	Eucalypt Woodland	EBWT	<i>Eucalyptus</i> Box Woodlands of the Tablelands and Western Slopes	Numeric
91	Burrinjuck Acacia Dry Herb–Grass Eucalypt Forest: <i>E. bridgesiana</i> – <i>E. bicostata</i> – <i>Acacia dealbata</i> – <i>Poa sieberiana</i>	Eucalypt Forest	SMSF	<i>Eucalyptus</i> Semi-Mesic Shrub Eucalypt Forests and Woodlands of the Eastern Tablelands and Coast on Soils of Moderate Fertility	Numeric
92	Tablelands Acacia–Grass–Herb Dry Eucalypt Forest: <i>E. bridgesiana</i> – <i>E. melliodora</i> – <i>Acacia mearnsii</i> – <i>Microlaena stipoides</i>	Eucalypt Woodland	EBWT	<i>Eucalyptus</i> Box Woodlands of the Tablelands and Western Slopes	Numeric
93	Western Tablelands Herb–Grass Dry Eucalypt Forest: <i>E. robertsonii</i> – <i>Microlaena stipoides</i>	Eucalypt Forest	SMGF	<i>Eucalyptus</i> Semi-Mesic Grassy Eucalypt Forests and Woodlands of the Eastern Tablelands and Coast on Soils of Moderate Fertility	Numeric
94	South West Slopes Acacia Dry Herb–Grass Eucalypt Forest: <i>E. bridgesiana</i> – <i>E. macrorhyncha</i> – <i>Acacia dealbata</i> – <i>Microlaena stipoides</i>	Eucalypt Woodland	EBWT	<i>Eucalyptus</i> Box Woodlands of the Tablelands and Western Slopes	Numeric
95	Tableland Acacia Moist Herb Eucalypt Forest: <i>E. pauciflora</i> – <i>E. dalrympleana</i> – <i>Acacia dealbata</i> – <i>Coronidium scorpioides</i>	Eucalypt Forest	SMGF	<i>Eucalyptus</i> Semi-Mesic Grassy Eucalypt Forests and Woodlands of the Eastern Tablelands and Coast on Soils of Moderate Fertility	Numeric
96	Tableland Tussock Grass–Herb Eucalypt Forest: <i>E. pauciflora</i> – <i>E. dalrympleana</i> – <i>Poa sieberiana</i>	Eucalypt Forest	SMGF	<i>Eucalyptus</i> Semi-Mesic Grassy Eucalypt Forests and Woodlands of the Eastern Tablelands and Coast on Soils of Moderate Fertility	Numeric
97	Montane Acacia–Dry Shrub–Herb–Grass Eucalypt Forest: <i>E. dalrympleana</i> – <i>E. pauciflora</i> – <i>Acacia dealbata</i> – <i>Stellaria pungens</i>	Eucalypt Forest	SMGF	<i>Eucalyptus</i> Semi-Mesic Grassy Eucalypt Forests and Woodlands of the Eastern Tablelands and Coast on Soils of Moderate Fertility	Numeric
98	Western Montane Moist Shrub Eucalypt Forest: <i>E. pauciflora</i> – <i>E. dalrympleana</i> – <i>Daviesia ulicifolia</i> – <i>Lomandra longifolia</i>	Eucalypt Forest	SMGF	<i>Eucalyptus</i> Semi-Mesic Grassy Eucalypt Forests and Woodlands of the Eastern Tablelands and Coast on Soils of Moderate Fertility	Numeric
99	Montane Dry Shrub–Herb–Grass Eucalypt Forest: <i>E. pauciflora</i> – <i>Leucopogon hookeri</i> – <i>Stellaria pungens</i>	Eucalypt Forest	SMGF	<i>Eucalyptus</i> Semi-Mesic Grassy Eucalypt Forests and Woodlands of the Eastern Tablelands and Coast on Soils of Moderate Fertility	Numeric
100	ACT Montane Dry Shrub–Grass Eucalypt Forest: <i>E. pauciflora</i> – <i>Acacia dealbata</i> – <i>Poa induta</i>	Eucalypt Forest	SMGF	<i>Eucalyptus</i> Semi-Mesic Grassy Eucalypt Forests and Woodlands of the Eastern Tablelands and Coast on Soils of Moderate Fertility	Numeric
101	North–Western Montane Dry Shrub–Herb–Grass Eucalypt Forest: <i>E. dalrympleana</i> – <i>E. pauciflora</i> – <i>Daviesia latifolia</i> – <i>Coprosma hirtella</i> – <i>Stellaria pungens</i>	Eucalypt Forest	SMGF	<i>Eucalyptus</i> Semi-Mesic Grassy Eucalypt Forests and Woodlands of the Eastern Tablelands and Coast on Soils of Moderate Fertility	Numeric
102	Brindabella Montane Dry Fern–Grass Eucalypt Forest: <i>E. dalrympleana</i> – <i>E. pauciflora</i> – <i>Poa sieberiana</i> – <i>Asperula scoparia</i>	Eucalypt Forest	SMGF	<i>Eucalyptus</i> Semi-Mesic Grassy Eucalypt Forests and Woodlands of the Eastern Tablelands and Coast on Soils of Moderate Fertility	Numeric
103	Western Montane Dry Fern–Grass Eucalypt Forest: <i>E. dives</i> – <i>E. dalrympleana</i> – <i>E. robertsonii</i> – <i>Pteridium esculentum</i> – <i>Poa sieberiana</i>	Eucalypt Forest	SMGF	<i>Eucalyptus</i> Semi-Mesic Grassy Eucalypt Forests and Woodlands of the Eastern Tablelands and Coast on Soils of Moderate Fertility	Numeric
104	Tableland Acacia–Herb–Grass Eucalypt Forest: <i>E. robertsonii</i> – <i>E. dalrympleana</i> – <i>Acacia dealbata</i> – <i>Platylobium formosum</i> – <i>Senecio prenanthoides</i>	Eucalypt Forest	SMGF	<i>Eucalyptus</i> Semi-Mesic Grassy Eucalypt Forests and Woodlands of the Eastern Tablelands and Coast on Soils of Moderate Fertility	Numeric
105	ACT Montane Dry Shrub Eucalypt Forest: <i>E. dalrympleana</i> – <i>E. dives</i> – <i>Daviesia mimosoides</i> – <i>Lomandra longifolia</i> – <i>Asperula scoparia</i>	Eucalypt Forest	SMGF	<i>Eucalyptus</i> Semi-Mesic Grassy Eucalypt Forests and Woodlands of the Eastern Tablelands and Coast on Soils of Moderate Fertility	Numeric
106	Montane Dry Shrub–Tussock Eucalypt Forest: <i>E. robertsonii</i> – <i>E. dalrympleana</i> – <i>Platylobium formosum</i> – <i>Tetratheca bauerifolia</i>	Eucalypt Forest	SMGF	<i>Eucalyptus</i> Semi-Mesic Grassy Eucalypt Forests and Woodlands of the Eastern Tablelands and Coast on Soils of Moderate Fertility	Numeric
107	Central Tableland–ACT Montane Dry Shrub Eucalypt Forest: <i>E. dalrympleana</i> – <i>E. dives</i> – <i>Hibbertia obtusifolia</i>	Eucalypt Forest	SMGF	<i>Eucalyptus</i> Semi-Mesic Grassy Eucalypt Forests and Woodlands of the Eastern Tablelands and Coast on Soils of Moderate Fertility	Numeric
108	Western Tablelands Dry Herb–Grass Eucalypt Forest: <i>E. macrorhyncha</i> – <i>E. dives</i> – <i>Hibbertia obtusifolia</i> – <i>Poa sieberiana</i>	Eucalypt Forest	EWLFST	<i>Eucalyptus</i> (Grassy or Shrubby) Woodlands and Eucalypt Forests on Low Fertility Soils on the Eastern Tablelands	Numeric

Number	VMU	Division (L4 IVC)	Abbreviation	Macrogroup (VFG)	Classification
109	Widespread Tablelands Dry Shrub–Tussock Grass Eucalypt Forest: <i>E. dives</i> – <i>E. mannifera</i> – <i>E. macrorhyncha</i> – <i>Hibbertia obtusifolia</i> – <i>Rhytidosperma pallidum</i>	Eucalypt Forest	EWLFST	<i>Eucalyptus</i> (Grassy or Shrubby) Woodlands and Eucalypt Forests on Low Fertility Soils on the Eastern Tablelands	Numeric
110	Tablelands Dry Shrub–Grass Eucalypt Forest: <i>E. dives</i> – <i>E. mannifera</i> – <i>E. macrorhyncha</i> – <i>Platylobium formosum</i>	Eucalypt Forest	EWLFST	<i>Eucalyptus</i> (Grassy or Shrubby) Woodlands and Eucalypt Forests on Low Fertility Soils on the Eastern Tablelands	Numeric
111	Central Northern Tablelands Dry Shrub–Grass Eucalypt Forest: <i>E. dives</i> – <i>E. dalrympleana</i> – <i>Poa sieberiana</i> – <i>Rhytidosperma racemosum</i>	Eucalypt Forest	SMGF	<i>Eucalyptus</i> Semi-Mesic Grassy Eucalypt Forests and Woodlands of the Eastern Tablelands and Coast on Soils of Moderate Fertility	Numeric
112	Eastern Tablelands Dry Shrub Eucalypt Forest: <i>E. sieberi</i> – <i>E. dives</i> – <i>Brachyloma daphnoides</i> – <i>Poa sieberiana</i>	Eucalypt Forest	EWLFST	<i>Eucalyptus</i> (Grassy or Shrubby) Woodlands and Eucalypt Forests on Low Fertility Soils on the Eastern Tablelands	Numeric
113	North East Tablelands Dry Shrub–Grass Eucalypt Forest: <i>E. mannifera</i> – <i>E. dives</i> – <i>Brachyloma daphnoides</i> – <i>Dianella revoluta</i>	Eucalypt Forest	EWLFST	<i>Eucalyptus</i> (Grassy or Shrubby) Woodlands and Eucalypt Forests on Low Fertility Soils on the Eastern Tablelands	Numeric
114	Tablelands Dry Shrub–Tussock Grass Eucalypt Forest: <i>E. macrorhyncha</i> – <i>E. rossii</i> – <i>E. goniocalyx</i> – <i>Rhytidosperma pallidum</i>	Eucalypt Forest	EWLFST	<i>Eucalyptus</i> (Grassy or Shrubby) Woodlands and Eucalypt Forests on Low Fertility Soils on the Eastern Tablelands	Numeric
115	South East Tablelands Dry Shrub–Tussock Grass Eucalypt Forest: <i>E. rossii</i> – <i>E. mannifera</i> – <i>Pultenaea procumbens</i> – <i>Rytidosperma pallidum</i>	Eucalypt Woodland	EBWT	<i>Eucalyptus</i> Box Woodlands of the Tablelands and Western Slopes	Numeric
116	Western Slopes Herb–Grass Woodland: <i>E. blakelyi</i> – <i>Microlaena stipoides</i> – <i>Hydrocotyle laxiflora</i>	Eucalypt Woodland	EBWT	<i>Eucalyptus</i> Box Woodlands of the Tablelands and Western Slopes	Numeric
117	Western Slopes Dry Grass Woodland: <i>E. albens</i> – <i>Microlaena stipoides</i> – <i>Bothriochloa macra</i>	Eucalypt Woodland	EBWT	<i>Eucalyptus</i> Box Woodlands of the Tablelands and Western Slopes	Numeric
118	Western Slopes Dry Grass Eucalypt Forest: <i>E. sideroxylon</i> – <i>E. blakelyi</i> – <i>E. goniocalyx</i> – <i>Anthosachne scabra</i>	Eucalypt Woodland	EBWT	<i>Eucalyptus</i> Box Woodlands of the Tablelands and Western Slopes	Numeric
119	Western Slopes Dry Shrub–Grass Eucalypt Forest: <i>E. macrorhyncha</i> – <i>E. polyanthemus</i> – <i>Hibbertia obtusifolia</i> – <i>Gonocarpus tetragynus</i>	Eucalypt Woodland	EBWT	<i>Eucalyptus</i> Box Woodlands of the Tablelands and Western Slopes	Numeric
120	Western Slopes Shrub–Herb–Grass Dry Eucalypt Forest: <i>E. macrorhyncha</i> – <i>E. albens</i> – <i>Hydrocotyle laxiflora</i> – <i>Microlaena stipoides</i>	Eucalypt Woodland	EBWT	<i>Eucalyptus</i> Box Woodlands of the Tablelands and Western Slopes	Numeric
121	Western Slopes Grass–Herb Dry Eucalypt Forest: <i>E. macrorhyncha</i> – <i>E. goniocalyx</i> – <i>Gonocarpus tetragynus</i> – <i>Poa sieberiana</i>	Eucalypt Woodland	EBWT	<i>Eucalyptus</i> Box Woodlands of the Tablelands and Western Slopes	Numeric
122	Northern Tablelands and Slopes Dry Shrub–Grass Eucalypt Forest: <i>E. macrorhyncha</i> – <i>Brachyloma daphnoides</i> – <i>Rytidosperma racemosum</i> – <i>Themeda triandra</i>	Eucalypt Forest	EWLFST	<i>Eucalyptus</i> (Grassy or Shrubby) Woodlands and Eucalypt Forests on Low Fertility Soils on the Eastern Tablelands	Numeric
123	Montane Wet Heath–Bog: <i>Hakea micrantha</i> – <i>Baeckea utilis</i>	Freshwater Wetland	FWMB	Freshwater Wetlands: Montane Bogs and Fens	Numeric
124	Western Montane Wet Heath–Herb Grass Woodland: <i>E. pauciflora</i> – <i>E. stellulata</i> – <i>Epacris breviflora</i>	Alpine Complex	AHS	Alpine Woodlands, Heaths, and Shrublands	Numeric
125	Montane Wet Heath–Herb Grassland: <i>Baeckea utilis</i> – <i>Hakea micrantha</i> – <i>Austrostipa hookeri</i> – <i>Hydrocotyle peduncularis</i>	Alpine Complex	AHS	Alpine Woodlands, Heaths, and Shrublands	Numeric
126	Montane Wet Sedgeland: <i>Carex gaudicudiana</i>	Alpine Complex	AHS	Alpine Woodlands, Heaths, and Shrublands	Numeric
127	Sub-alpine Dry Shrub–Herb–Grass Woodland: <i>E. debeuzevillei</i>	Alpine Complex	AHS	Alpine Woodlands, Heaths, and Shrublands	Numeric
128	Sub-alpine Dry Shrub–Herb Woodland: <i>E. niphophila</i>	Alpine Complex	AHS	Alpine Woodlands, Heaths, and Shrublands	Numeric
129	Alpine Wet Herbfield	Alpine Complex	ABF	Alpine Bogs and Fens	Numeric
130	Sub-alpine Shrub–Grass Woodland: <i>E. niphophila</i>	Alpine Complex	AHS	Alpine Woodlands, Heaths, and Shrublands	Numeric
131	Sub-alpine Herbfield	Alpine Complex	AHG	Alpine Herbfields	Numeric
132	Sub-alpine Dry Herb–Grassland	Alpine Complex	AHG	Alpine Herbfields	Numeric
133	Sub-alpine Wet Herb–Grassland–Bog	Alpine Complex	ABF	Alpine Bogs and Fens	Numeric
134	Eastern Tablelands Dry Heath: <i>Allocasuarina nana</i>	Heathland	HSOT	Heaths on Siliceous Outcrops on the Tablelands and Western Slopes of South-eastern Australia	Numeric
135	Southern Escarpment (Wadbilliga) Moist Heath	Mallee Open Woodland	EMCT	Mallee Heaths and Shrublands of the East Coast and Tablelands	Numeric
136	Jervis Bay Heathy Forest: <i>Corymbia gummifera</i> – <i>Eucalyptus sieberi</i> – <i>Banksia serrata</i> – <i>Acacia suaveolens</i> – <i>Bossiaea ensata</i> – <i>Lepidosperma concavum</i> – <i>Caustis flexuosa</i>	Eucalypt Forest	EWHSC	<i>Eucalyptus</i> Heathy Woodlands on Low Fertility Soils on the East Coast	Numeric
137	Coastal Escarpment Moist Shrub–Fern Eucalypt Forest: <i>E. sieberi</i> – <i>E. piperita</i> – <i>Gleichenia dicarpa</i>	Eucalypt Forest	EWLFST	<i>Eucalyptus</i> (Grassy or Shrubby) Woodlands and Eucalypt Forests on Low Fertility Soils on the Eastern Tablelands	Numeric
138	Northern Plateau and Escarpment Heath Shrub Dry Eucalypt Forest: <i>E. sieberi</i> – <i>E. considianiana</i>	Eucalypt Forest	EWLFST	<i>Eucalyptus</i> (Grassy or Shrubby) Woodlands and Eucalypt Forests on Low Fertility Soils on the Eastern Tablelands	Numeric
139	Northern Coastal Hinterland Heath Shrub Woodland: <i>Corymbia gummifera</i> – <i>E. sclerophylla</i>	Eucalypt Woodland	EWHSC	<i>Eucalyptus</i> Heathy Woodlands on Low Fertility Soils on the East Coast	Numeric

Number	VMU	Division (L4 IVC)	Abbreviation	Macrogroup (VFG)	Classification
140	Northern Coastal Tall Wet Heath	Heathland	HSOT	Heaths on Siliceous Outcrops on the Tablelands and Western Slopes of South-eastern Australia	Numeric
141	Northern Coast (and Escarpment) Wet Heath–Sedge	Heathland	HSOT	Heaths on Siliceous Outcrops on the Tablelands and Western Slopes of South-eastern Australia	Numeric
144	Northern Coast and Hinterland Moist Heath	Heathland	HSOT	Heaths on Siliceous Outcrops on the Tablelands and Western Slopes of South-eastern Australia	Numeric
145	Northern Plateau Mallee Heath	Mallee Open Woodland	EMCT	Mallee Heaths and Shrublands of the East Coast and Tablelands	Numeric
146	Tableland Dry Herb–Grass Woodland: <i>E. pauciflora</i> – <i>E. stellulata</i> – <i>Asperula scoparia</i>	Eucalypt Forest	SMGF	<i>Eucalyptus</i> Semi-Mesic Grassy Eucalypt Forests and Woodlands of the Eastern Tablelands and Coast on Soils of Moderate Fertility	Numeric
147	Tablelands Moist Sedge–Herb–Grassland	Freshwater Wetland	FWSS	Freshwater Wetlands: East Coast and Tablelands Sedgeland Swamps	Numeric
148	Tableland Tussock Grassland –Sedgeland– Woodland: <i>Poa labillardieri</i> – <i>Carex appressa</i>	Freshwater Wetland	FWSS	Freshwater Wetlands: East Coast and Tablelands Sedgeland Swamps	Numeric
149	Northern Tablelands Shrub–Tussock Grass Eucalypt Forest: <i>E. dalrympleana</i>	Eucalypt Forest	SMGF	<i>Eucalyptus</i> Semi-mesic Grassy Eucalypt Forests and Woodlands of the Eastern Tablelands and Coast on Soils of Moderate Fertility	Numeric
150	Far South East Tableland Moist Herb–Grass Eucalypt Forest: <i>E. viminalis</i>	Eucalypt Forest	EWLFST	<i>Eucalyptus</i> (Grassy or Shrubby) Woodlands and Eucalypt Forests on Low Fertility Soils on the Eastern Tablelands	Numeric
151	Tableland Sedge–Grass Herbland: <i>Themeda triandra</i> – <i>Carex appressa</i>	Temperate Grassland	GTM	Grasslands of Montane Regions often Dominated by <i>Poa</i>	Numeric
152	Tableland Herb–Grassland: <i>Themeda triandra</i>	Temperate Grassland	GTM	Grasslands of Montane Regions often Dominated by <i>Poa</i>	Numeric
153	Tablelands and Slopes Herb–Grassland–Woodland: <i>E. pauciflora</i> – <i>E. rubida</i> – <i>Themeda triandra</i>	Temperate Grassland	GTM	Grasslands of Montane Regions often Dominated by <i>Poa</i>	Numeric
154	Tableland Dry Grassy Woodland: <i>E. bridgesiana</i> – <i>Themeda triandra</i>	Eucalypt Woodland	EBWT	<i>Eucalyptus</i> Box Woodlands of the Tablelands and Western Slopes	Numeric
156	Northern Slopes Dry Grassy Eucalypt Forest: <i>Bothriochloa macra</i>	Eucalypt Woodland	EBWT	<i>Eucalyptus</i> Box Woodlands of the Tablelands and Western Slopes	Numeric
157	ACT–Monaro Dry Grassland: <i>Bothriochloa macra</i> – <i>Chrysocephalum apiculatum</i>	Temperate Grassland	GTM	Grasslands of Montane Regions often Dominated by <i>Poa</i>	Numeric
158	Monaro Dry Grassland: <i>Austrostipa</i> spp.– <i>Rytidosperma</i> spp.	Temperate Grassland	GTM	Grasslands of Montane Regions often Dominated by <i>Poa</i>	Numeric
159	Northern Slopes Dry Grass Woodland: <i>E. blakelyi</i> – <i>E. bridgesiana</i> – <i>E. melliodora</i> – <i>Aristida ramosa</i>	Eucalypt Woodland	EBWT	<i>Eucalyptus</i> Box Woodlands of the Tablelands and Western Slopes	Numeric
160	Northern Slopes Dry Grass Woodland: <i>E. blakelyi</i> – <i>E. melliodora</i> – <i>Rytidosperma racemosum</i> – <i>Austrostipa scabra</i> ssp <i>falcata</i>	Eucalypt Woodland	EBWT	<i>Eucalyptus</i> Box Woodlands of the Tablelands and Western Slopes	Numeric
161	Tablelands and Slopes Dry Herb–Grass Woodland: <i>E. melliodora</i> – <i>Rytidosperma racemosum</i>	Eucalypt Woodland	EBWT	<i>Eucalyptus</i> Box Woodlands of the Tablelands and Western Slopes	Numeric
162	Western Slopes Moist Herb–Sedge–Grass Woodland: <i>E. blakelyi</i> – <i>Carex appressa</i>	Eucalypt Forest	SMSF	<i>Eucalyptus</i> Semi-Mesic Shrub Eucalypt Forests and Woodlands of the Eastern Tablelands and Coast on Soils of Moderate Fertility	Numeric
163	Central North Slopes Dry Grass Woodland: <i>E. blakelyi</i> – <i>Rytidosperma racemosum</i> – <i>Cheilanthes sieberi</i>	Eucalypt Woodland	EBWT	<i>Eucalyptus</i> Box Woodlands of the Tablelands and Western Slopes	Numeric
164	Coastal Escarpment Cool Temperate Rainforest	Rainforest	RWT	Rainforest: Warm Temperate	Numeric
165	Southern Escarpment Cool–Warm Temperate Rainforest	Rainforest	RWT	Rainforest: Warm Temperate	Numeric
166	Central Coastal Hinterland and Lowland Warm Temperate Rainforest	Rainforest	RWT	Rainforest: Warm Temperate	Numeric
167	Coastal Lowland Sub Tropical–Littoral Rainforest	Rainforest	RWT	Rainforest: Warm Temperate	Numeric
168	Ecotonal Granite Dry Rainforest: <i>Bacchousia myrtifolia</i> – <i>Pittosporum undulatum</i> – <i>Angophora floribunda</i> – <i>Doodia aspera</i>	Rainforest	RD	Rainforest: Dry	Numeric
169	Coastal Hinterland Sub Tropical Warm Temperate Rainforest	Rainforest	RWT	Rainforest: Warm Temperate	Numeric
170	Southern Coastal Hinterland Dry Gully Rainforest– <i>Bacchousia myrtifolia</i>	Rainforest	RWT	Rainforest: Warm Temperate	Numeric
171	Coastal Shrub–Grass Eucalypt Forest: <i>E. tereticornis</i>	Eucalypt Forest	EFLMSC	<i>Eucalyptus</i> (Grassy or Shrubby) Eucalypt Forests on Low-Moderate Fertility Soils on the East Coast	Numeric
172	Kosciuszko Western Escarpment Cool Temperate Rainforest	Rainforest	RWT	Rainforest: Warm Temperate	Numeric
173	Northern Grass Herb Eucalypt Forest on Basalt	Eucalypt Forest	EWLFST	<i>Eucalyptus</i> (Grassy or Shrubby) Woodlands and Eucalypt Forests on Low Fertility Soils on the Eastern Tablelands	Numeric
174	Shoalhaven Gorge Eucalypt Forest: <i>E. tereticornis</i> – <i>E. melliodora</i>	Eucalypt Forest	EWLFST	<i>Eucalyptus</i> (Grassy or Shrubby) Woodlands and Eucalypt Forests on Low Fertility Soils on the Eastern Tablelands	Numeric
175	Northern Coastal Lowlands Swamp Eucalypt Forest: <i>E. robusta</i>	Eucalypt Forest	FWECFS	Freshwater Wetlands: Coastal Swamp Eucalypt Forests and Shrublands	Numeric
176	Morton Plateau Mallee Swamp Low Eucalypt Forest	Eucalypt Woodland	RVWS	Rocky Outcrops: Woodlands or Shrublands of the Coast and Eastern Tablelands	Numeric
177	Illawarra Lowland Sub-Tropical Rainforest	Rainforest	RWT	Rainforest: Warm Temperate	Numeric

Number	VMU	Division (L4 IVC)	Abbreviation	Macrogroup (VFG)	Classification
178	Robertson Warm Temperate Rainforest	Rainforest	RWT	Rainforest: Warm Temperate	Numeric
179	Eastern Deua Dry Shrub Eucalypt Forest: <i>Angophora costata</i>	Eucalypt Forest	EWLFSF	<i>Eucalyptus</i> (Grassy or Shrubby) Woodlands and Eucalypt Forests on Low Fertility Soils on the Eastern Tablelands	Numeric
180	Cooma Dry Grass Eucalypt Forest: <i>E. viminalis</i> – <i>E. dives</i>	Eucalypt Forest	EWLFSF	<i>Eucalyptus</i> (Grassy or Shrubby) Woodlands and Eucalypt Forests on Low Fertility Soils on the Eastern Tablelands	Numeric
181	North Eastern Tablelands Gully Fern Eucalypt Forest: <i>E. elata</i> – <i>Calochlaena dubia</i>	Eucalypt Forest	SMSF	<i>Eucalyptus</i> Semi-Mesic Shrub Eucalypt Forests and Woodlands of the Eastern Tablelands and Coast on Soils of Moderate Fertility	Numeric
182	Western Slopes Dry Shrub Eucalypt Forest on Serpentine Rock: <i>E. nortonii</i>	Eucalypt Forest	EWLFSF	<i>Eucalyptus</i> (Grassy or Shrubby) Woodlands and Eucalypt Forests on Low Fertility Soils on the Eastern Tablelands	Numeric
183	Northern Tablelands Basalt Grass Eucalypt Forest: <i>E. polyanthemos</i>	Eucalypt Forest	EWLFSF	<i>Eucalyptus</i> (Grassy or Shrubby) Woodlands and Eucalypt Forests on Low Fertility Soils on the Eastern Tablelands	Numeric
184	Jenolan River Heath Eucalypt Forest on Granite: <i>E. punctata</i>	Eucalypt Forest	EWLFSF	<i>Eucalyptus</i> (Grassy or Shrubby) Woodlands and Eucalypt Forests on Low Fertility Soils on the Eastern Tablelands	Numeric
185	Mangrove Estuarine Low Eucalypt Forest: <i>Avicennia marina</i>	Saline Wetland	SWM	Saline Wetlands: Mangrove Mudflats	Numeric
186	Mudflats–Saltmarshes	Saline Wetland	SWSM	Saline Wetlands: Coastal Salt-marsh	Numeric
187	Coastal Headland Heathlands	Heathland	HSCH	Heaths and Shrublands on Coastal Headlands	Numeric
188	Sand Dune Wetlands	Shrubland	CSD	Coastal Sand Dune Grasslands, Forblands and Shrublands	Numeric
189	Coastal Alluvial Valley Floor Wetlands	Freshwater Wetland	FWSS	Freshwater Wetlands: East Coast and Tablelands Sedgeland Swamps	Numeric
190	Rock	Bare land	RGA	Bare Land: Rock	Numeric
191	Tableland Alluvial Valley Floor Wetlands	Freshwater Wetland	FWSS	Freshwater Wetlands: East Coast and Tablelands Sedgeland Swamps	Numeric
192	South West Slopes Tall Shrubland Low Eucalypt Forest: <i>E. dwyeri</i> – <i>Acacia doratoxylon</i>	Mallee Open Woodland	EMCT	Mallee Heaths and Shrublands of the East Coast and Tablelands	Numeric
193	High Southern Escarpment Swamps	Freshwater Wetland	FWSS	Freshwater Wetlands: East Coast and Tablelands Sedgeland Swamps	Numeric
194	North East Riparian Eucalypt Forest: <i>E. mannifera</i> – <i>E. amplifolia</i>	Eucalypt Forest	RIFEC	Riparian Eucalypt Forests and Shrublands of the Eastern Coast and Tablelands (non-Rainforest)	Numeric
195	Morton–Budawang Baur’s Mallee Ash Rocky Scree Low Eucalypt Forest	Eucalypt Woodland	RVWS	Rocky Outcrops: Woodlands or Shrublands of the Coast and Eastern Tablelands	Numeric
196	South West Slopes Tall Shrubland Low Eucalypt Forest: <i>E. dealbata</i>	Mallee Open Woodland	MWSR	Mallee Woodlands and Shrublands on Stony Ridges of the Inland	Numeric
197	Deua Escarpment Herb–Grass Eucalypt Forest on Limestone: <i>E. viminalis</i>	Eucalypt Forest	SMSF	<i>Eucalyptus</i> Semi-Mesic Shrub Eucalypt Forests and Woodlands of the Eastern Tablelands and Coast on Soils of Moderate Fertility	Numeric
198	Coastal Littoral Rainforest	Rainforest	RST	Rainforest: Sub-tropical	Numeric
199	Coastal Beecroft Peninsular Eucalypt Forest: <i>Corymbia gummifera</i> – <i>E. botryoides</i>	Eucalypt Forest	EFLMSC	<i>Eucalyptus</i> (Grassy or Shrubby) Eucalypt Forests on Low-Moderate Fertility Soils on the East Coast	Numeric
200	<i>Phragmites</i> Rushland–Wetlands	Freshwater Wetland	FWSS	Freshwater Wetlands: East Coast and Tablelands Sedgeland Swamps	Numeric
201	Lower Abercrombie Dry Grass–Shrub Eucalypt Forest: <i>E. dealbata</i> – <i>E. polyanthemos</i> – <i>Callitris endlicheri</i>	Eucalypt Woodland	EBWT	<i>Eucalyptus</i> Box Woodlands of the Tablelands and Western Slopes	Numeric
202	Lower Abercrombie Dry Grass–Shrub Eucalypt Forest: <i>Callitris glaucophylla</i>	Callitris Woodland	CPW	<i>Callitris</i> (Cypress Pine) Woodlands Mainly of the Inland Slopes and Plains	Numeric
204	<i>Epacris microphylla</i> – <i>Chionohebe densiflora</i>	Alpine Complex	AF	Alpine Fjaeldmarks	Numeric
205	<i>Coprosma niphophila</i> – <i>Colobanthus nivicola</i>	Alpine Complex	AF	Alpine Fjaeldmarks	Numeric
206	<i>Plantago glacialis</i> – <i>Neopaxia australasica</i>	Alpine Complex	AHG	Alpine Herbfields	Numeric
207	<i>Carex gaudichaudiana</i>	Alpine Complex	ABF	Alpine Bogs and Fens	Numeric
208	<i>Sphagnum cristatum</i> – <i>Carex gaudichaudiana</i>	Alpine Complex	ABF	Alpine Bogs and Fens	Numeric
209	<i>Leptospermum morrisonii</i> Scrub	Eucalypt Forest	RIFEC	Riparian Eucalypt Forests and Shrublands of the Eastern Coast and Tablelands (non-Rainforest)	Numeric
209	<i>Sphagnum cristatum</i> – <i>Carex gaudichaudiana</i> – <i>Epacris paludosa</i>	Alpine Complex	ABF	Alpine Bogs and Fens	Numeric
210	River Peppermint-Bosistos Box Ecotonal Sheltered Eucalypt Forest	Eucalypt Forest	SMSF	<i>Eucalyptus</i> Semi-Mesic Shrub Eucalypt Forests and Woodlands of the Eastern Tablelands and Coast on Soils of Moderate Fertility	Numeric
210	<i>Chionochloa frigida</i>	Alpine Complex	AHG	Alpine Herbfields	Numeric
211	Callistemon linearis coastal heath–shrubland	Eucalypt Forest	RIFEC	Riparian Eucalypt Forests and Shrublands of the Eastern Coast and Tablelands (non-Rainforest)	Numeric
211	<i>Brachyscome nivalis</i> – <i>Rytidosperma alpicola</i>	Alpine Complex	AHG	Alpine Herbfields	Numeric
212	Coastal Woollybutt–Melaleuca decora sedge shrub swamp Eucalypt Forest	Freshwater Wetland	FWECSEF	Freshwater Wetlands: Coastal Swamp Eucalypt Forests and Shrublands	Numeric

Number	VMU	Division (L4 IVC)	Abbreviation	Macrogroup (VFG)	Classification
213	Lower Shoalhaven Spotted Gum herb–grass–shrub Eucalypt Forest	Eucalypt Forest	EFLMSC	<i>Eucalyptus</i> (Grassy or Shrubby) Eucalypt Forests on Low-Moderate Fertility Soils on the East Coast	Numeric
214	Kangaroo Valley–Lower Shoalhaven Coachwood–Sassafras Rainforest	Rainforest	RST	Rainforest: Sub-tropical	Numeric
215	Stinging Tree–Flame Tree Dry Sub-Tropical Rainforest	Rainforest	RST	Rainforest: Sub-tropical	Numeric
216	Lilly Pilly–Native Laurel Sub-Tropical Warm Temperate Rainforest	Rainforest	RST	Rainforest: Sub-tropical	Numeric
217	Middle Shoalhaven Dry Rainforest	Rainforest	RST	Rainforest: Sub-tropical	Expert
250	Marine Estuaries	Saline Wetland	SWCBL	Saline Wetlands: Coastal Brackish Lakes	Expert
251	Freshwater Dams, waterbodies	Water Bodies	WAB	Water Bodies: Freshwater	Expert
252	Beach Sands	Shrubland	CSD	Coastal Sand Dune Grasslands, Forblands and Shrublands	Expert
253	River Gravels and Alluvium	Eucalypt Forest	RIFEC	Riparian Eucalypt Forests and Shrublands of the Eastern Coast and Tablelands (non-Rainforest)	Expert
254	Radiata Pine Plantation	Exotic Eucalypt Forests	XCP	Exotic: Coniferous Eucalypt Forest Plantation	Expert
255	Exotic Grassland	Grassland	GE	Grasslands: Exotic Tussock	Expert
256	Native Grasslands: Not Classified	Temperate Grassland	GTM	Grasslands of Montane Regions often dominated by <i>Poa</i>	Expert
289	Eucalypt Plantation	Exotic Eucalypt Forests	XEP	Exotic: Eucalypt Forest Plantation	Expert
298	Pine Plantation	Exotic Eucalypt Forests	XCP	Exotic: Coniferous Eucalypt Forest Plantation	Expert
299	Grasslands: exotic	Temperate Grassland	GE	Grasslands: Exotic Tussock	Expert
300	South Coast escarpment dry-semi-mesic Eucalypt Forest	Eucalypt Forest	SMSF	<i>Eucalyptus</i> Semi-Mesic Shrub Eucalypt Forests and Woodlands of the Eastern Tablelands and Coast on Soils of Moderate Fertility	Expert
301	Coastal Lowlands Riparian Herb–Grass Eucalypt Forest–various Eucalypts (FE 49)–was part of composite group FE4849	Eucalypt Forest	RIFEC	Riparian Eucalypt Forests and Shrublands of the Eastern Coast and Tablelands (non-Rainforest)	Numeric
302	Southern Escarpment Shrub–Fern–Herb Moist Eucalypt Forest: <i>E. cypellocarpa</i> – <i>E. fastigata</i> – <i>E. obliqua</i> (FE 58)	Eucalypt Forest	ECT	<i>Eucalyptus</i> Mesic Eucalypt Forests of the Eastern Tablelands	Numeric

Table S8. Summary table of vegetation mapping unit (VMUs), vegetation formation groups (VFG) and divisions for the Eden CRA sub-region of the South Coast and Tablelands Region

Number	VMU	Division (L.4 IVC)	Abbreviation	Macrogroup (VFG)	API types	Classification
1	<i>Eucalyptus bosistoana</i> – <i>E. globoidea</i> – <i>Acacia mearnsii</i> – <i>Microlaena stipoides</i>	Eucalypt Forest	EFLMSC	<i>Eucalyptus</i> (Grassy or Shrubby) Eucalypt Forests on Low-Moderate Fertility Soils on the East Coast	E1204 (Bega Valley)	Numeric
2	<i>Eucalyptus globoidea</i> – <i>Angophora floribunda</i> – <i>E. tereticornis</i> – <i>Acacia mearnsii</i> – <i>Poa meioneetes</i>	Eucalypt Forest	SMSF	<i>Eucalyptus</i> Semi-Mesic Shrub Eucalypt Forests and Woodlands of the Eastern Tablelands and Coast on Soils of Moderate Fertility	E1101 (Candelo and Wyndham)	Numeric
3	<i>Eucalyptus botrioides</i> – <i>Lomandra longifolia</i> – <i>Imperata cylindrica</i>	Eucalypt Forest	EFLMSC	<i>Eucalyptus</i> (Grassy or Shrubby) Eucalypt Forests on Low-Moderate Fertility Soils on the East Coast	E0703 (SC)	Numeric
4	<i>Eucalyptus maidenii</i> – <i>E. globoidea</i> – <i>Lomandra longifolia</i> – <i>Microlaena stipoides</i> – <i>Parsonsia straminea</i>	Eucalypt Forest	EFLMSC	<i>Eucalyptus</i> (Grassy or Shrubby) Eucalypt Forests on Low-Moderate Fertility Soils on the East Coast	E3204, E1203, E08, E0803, in southern central Eden, E21 Coolangubra, Wyndham Valley	Numeric
5	<i>Eucalyptus cypellocarpa</i> – <i>E. elata</i> – <i>Pomaderris aspera</i> – <i>Pteridium Esculentum</i> – <i>Doodia aspera</i>	Eucalypt Forest	SMSF	<i>Eucalyptus</i> Semi-Mesic Shrub Eucalypt Forests and Woodlands of the Eastern Tablelands and Coast on Soils of Moderate Fertility	E3301, E32 (Wadbilliga)	Numeric
6	<i>Eucalyptus elata</i> – <i>E. cypellocarpa</i> – <i>Carex longifolia</i> – <i>Poa ensiformis</i> – <i>Adiantum aethiopicum</i>	Eucalypt Forest	SMSF	<i>Eucalyptus</i> Semi-Mesic Shrub Eucalypt Forests and Woodlands of the Eastern Tablelands and Coast on Soils of Moderate Fertility	E3204 (near coastal)	Numeric
7	<i>Eucalyptus elata</i> – <i>E. cypellocarpa</i> – <i>Carex longifolia</i> – <i>Poa ensiformis</i> – <i>Adiantum aethiopicum</i>	Eucalypt Forest	SMSF	<i>Eucalyptus</i> Semi-Mesic Shrub Eucalypt Forests and Woodlands of the Eastern Tablelands and Coast on Soils of Moderate Fertility	E1204 (Bega Valley)	Numeric
8	<i>Eucalyptus botryoides</i> – <i>E. elata</i> – <i>E. baueriana</i> – <i>Acacia mearnsii</i> – <i>Doodia aspera</i>	Eucalypt Forest	SMSF	<i>Eucalyptus</i> Semi-Mesic Shrub Eucalypt Forests and Woodlands of the Eastern Tablelands and Coast on Soils of Moderate Fertility	E07E33 (Upper Brogo)	Numeric
9	<i>Eucalyptus tereticornis</i> – <i>E. melliodora</i>	Eucalypt Forest	TGFEC	<i>Eucalyptus</i> Tall Grassy Eucalypt Forests or Woodlands of the Eastern Coastal Lowlands on Soils of High Fertility	E1101 (Candelo and Wyndham)	Numeric
10	<i>Eucalyptus tereticornis</i> – <i>Paspalidium dilatatum</i> – <i>Cynodon dactylus</i> – <i>Glycine tabacina</i>	Eucalypt Forest	TGFEC	<i>Eucalyptus</i> Tall Grassy Eucalypt Forests or Woodlands of the Eastern Coastal Lowlands on Soils of High Fertility	E1101(Bega Valley)	Numeric
11	<i>Eucalyptus sieberi</i> – <i>E. muelleriana</i>	Eucalypt Forest	EFLMSC	<i>Eucalyptus</i> (Grassy or Shrubby) Eucalypt Forests on Low-Moderate Fertility Soils on the East Coast	E32	Numeric
12	<i>Eucalyptus viminalis</i> – <i>E. ovata</i>	Eucalypt Woodland	ESCT	<i>Eucalyptus</i> Swamp Communities of the Eastern Coast and Tablelands	E1604E33 should be E1711 (subset – API code needs changing)	Numeric
13	<i>Eucalyptus globoidea</i> – <i>E. cypellocarpa</i> – <i>E. maidenii</i> – <i>Cassinia longifolia</i> – <i>Lomandra longifolia</i>	Eucalypt Forest	EFLMSC	<i>Eucalyptus</i> (Grassy or Shrubby) Eucalypt Forests on Low-Moderate Fertility Soils on the East Coast	E12, E1204 (Wadbilliga, Tantarang, Coolangubra, Wog Wog)	Numeric
14	<i>Poa labillardiera</i>	Freshwater Wetland	FWMB	Freshwater Wetlands: Montane Bogs and Fens	SCRA 148	Numeric
15	<i>Eucalyptus ovata</i> – <i>Poa labillardieri</i> – <i>Empodism minus</i>	Eucalypt Woodland	ESCT	<i>Eucalyptus</i> Swamp Communities of the Eastern Coast and Tablelands	E1701 (subset – API code needs changing)	Numeric
16	<i>Lepidosperma longitudinale</i> – <i>Schoenus brevifolius</i> – <i>Gonocarpus micranthus</i> subsp. <i>micranthus</i>	Freshwater Wetland	FWSS	Freshwater Wetlands: East Coast and Tablelands Sedgeland Swamps	S	Numeric (Not mapped)
17	<i>Eucalyptus ovata</i> – <i>Melaleuca squarrosa</i> – <i>M. ericoides</i> – <i>Gahnia clarkei</i>	Eucalypt Woodland	ESCT	<i>Eucalyptus</i> Swamp Communities of the Eastern Coast and Tablelands	mainly S (Lower Wallaragarragh: subset – API code needs changing)	Numeric
18	<i>Melaleuca ericoides</i> – <i>Carex appressa</i> – <i>Phragmites australis</i>	Freshwater Wetland	FWSS	Freshwater Wetlands: East Coast and Tablelands Sedgeland Swamps	S (Near Coastal Estuaries)	Numeric
19	<i>Casuarina cunninghamia</i> – <i>Tristania laurina</i> – <i>Kunzea ambigua</i> – <i>Lomatia myricoides</i>	Eucalypt Forest	RIFEC	Riparian Eucalypt Forests and Shrublands of the Eastern Coast and Tablelands (non-Rainforest)	X (above saline estuaries)	Numeric

Number	VMU	Division (L.4 IVC)	Abbreviation	Macrogroup (VFG)	API types	Classification
20	<i>Eucalyptus muelleriana</i> – <i>E. cypellocarpa</i> – <i>Acacia cognata</i> – <i>Pteridium esculentum</i> – <i>Calochlaena dubia</i> – <i>Goodenia ovata</i>	Eucalypt Forest	SMGF	<i>Eucalyptus</i> Semi-Mesic Grassy Eucalypt Forests and Woodlands of the Eastern Tablelands and Coast on Soils of Moderate Fertility	E3204 (WSF)	Numeric
21	<i>Eucalyptus sieberi</i> – <i>E. longifolia</i> – <i>Pteridium esculentum</i> – <i>Hibbertia dentata</i> – <i>Goodenia ovata</i>	Eucalypt Forest	EFLMSC	<i>Eucalyptus</i> (Grassy or Shrubby) Eucalypt Forests on Low-Moderate Fertility Soils on the East Coast	E1204E3204 (DSF)	Numeric
22	<i>Eucalyptus muelleriana</i> – <i>E. cypellocarpa</i> – <i>Eucalyptus sieberi</i> – <i>Cassinia longiolia</i> – <i>Pteridium esculentum</i> – <i>Poa meionectes</i>	Eucalypt Forest	EFLMSC	<i>Eucalyptus</i> (Grassy or Shrubby) Eucalypt Forests on Low-Moderate Fertility Soils on the East Coast	E0803 (Lowland Eden Coast)	Numeric
25	<i>Eucalyptus smithii</i> – <i>Beyeria lasiocarpa</i> – <i>Cassinia trinerva</i> – <i>Pomaderris cinereus</i>	Eucalypt Woodland	RVWS	Rocky Outcrops: Woodlands or Shrublands of the Coast and Eastern Tablelands	V, E3303	Numeric
26	<i>Acacia sylvestris</i> – <i>Philomene trachyphloia</i> – <i>Beyeria lasiocarpa</i>	Acacia Shrubland	AST	<i>Acacia</i> Eucalypt Forests and Shrublands of the East Coast and Tablelands	S (Brogo Gorge and Wadbilliga)	Numeric
27	<i>Eucalyptus cypellocarpa</i> – <i>E. obliqua</i> – <i>E. fastigata</i> – <i>Calochlaena dubia</i>	Eucalypt Forest	TWFEC	<i>Eucalyptus</i> Tall Mesic Shrub Eucalypt Forests of the Eastern Coastal Lowlands on Soils of High Fertility	E1801 WFF WSF (Eden)	Numeric
28	<i>Eucalyptus obliqua</i> – <i>E. cypellocarpa</i> – <i>E. radiata</i> – <i>Pteridium esculentum</i> – <i>Viola hederacea</i>	Eucalypt Forest	SMSF	<i>Eucalyptus</i> Semi-Mesic Shrub Eucalypt Forests and Woodlands of the Eastern Tablelands and Coast on Soils of Moderate Fertility	E1804 E1805 (DSF)	Numeric
29	<i>Eucalyptus sieberi</i> – <i>Acacia terminalis</i> – <i>Acacia obtusifolia</i> – <i>Pteridium esculentum</i> – <i>Tetrarhena juncea</i>	Eucalypt Forest	EFLMSC	<i>Eucalyptus</i> (Grassy or Shrubby) Eucalypt Forests on Low-Moderate Fertility Soils on the East Coast	E3101 (Hinterland and Coast)	Numeric
30	<i>Eucalyptus fraxinoides</i> – <i>E. sieberi</i> – <i>Pteridium esculentum</i> – <i>Dianella tasmanica</i>	Eucalypt Forest	EWLFST	<i>Eucalyptus</i> (Grassy or Shrubby) Woodlands and Eucalypt Forests on Low Fertility Soils on the Eastern Tablelands	E1501 (Wadbilliga)	Numeric
31	<i>Corymbia maculata</i> – <i>Eucalyptus paniculata</i> – <i>Macrozamia communis</i>	Eucalypt Forest	EFLMSC	<i>Eucalyptus</i> (Grassy or Shrubby) Eucalypt Forests on Low-Moderate Fertility Soils on the East Coast	E0901, E902	Numeric
32	<i>Eucalyptus agglomerata</i> – <i>E. sieberi</i> – <i>Acacia terminalis</i> – <i>Lomandra longifolia</i> – <i>Gonocarpus teucroides</i> – <i>Playsace lanceolata</i>	Eucalypt Forest	EFLMSC	<i>Eucalyptus</i> (Grassy or Shrubby) Eucalypt Forests on Low-Moderate Fertility Soils on the East Coast	E1203 (not always so) – issue with API code definition	Numeric
33	<i>Corymbia gummifera</i> – <i>E. globoidea</i> – <i>E. pilularis</i> – <i>Allocasuarina littoralis</i> – <i>Pteridium esculentum</i> – <i>Entolasia stricta</i>	Eucalypt Forest	EFLMSC	<i>Eucalyptus</i> (Grassy or Shrubby) Eucalypt Forests on Low-Moderate Fertility Soils on the East Coast	E1204, E0601 (coastal SE Eden)	Numeric
34	<i>E. smithii</i> – <i>Allocasuarina littoralis</i> – <i>Stypantra glauca</i> – <i>Platsace lanceolatus</i>	Eucalypt Forest	EFLMSC	<i>Eucalyptus</i> (Grassy or Shrubby) Eucalypt Forests on Low-Moderate Fertility Soils on the East Coast	E3208 (middle Wallagaraugh Catchment)	Numeric
35	<i>Eucalyptus globoidea</i> – <i>E. sieberi</i> – <i>Corymbia gummifera</i> – <i>Rytidosperma pallida</i> – <i>Lepyrodiata laterale</i> – <i>Entolasia stricta</i>	Eucalypt Forest	EFLMSC	<i>Eucalyptus</i> (Grassy or Shrubby) Eucalypt Forests on Low-Moderate Fertility Soils on the East Coast	E3102 (Mumbulla Mtn–Bermagui Lake)	Numeric
36	<i>Eucalyptus longifolia</i> – <i>E. muelleriana</i> – <i>Allocasuarina littoralis</i> – <i>Davisia mimosoides</i> – <i>Hardenbergia violacea</i>	Eucalypt Forest	EFLMSC	<i>Eucalyptus</i> (Grassy or Shrubby) Eucalypt Forests on Low-Moderate Fertility Soils on the East Coast	E0803 (Lowland Eden Coast)	Numeric
37	<i>Eucalyptus sieberi</i> – <i>E. agglomerata</i> – <i>Pteridium esculentum</i> – <i>Tetratheca thymifolia</i> – <i>Platsace lanceolata</i>	Eucalypt Forest	EFLMSC	<i>Eucalyptus</i> (Grassy or Shrubby) Eucalypt Forests on Low-Moderate Fertility Soils on the East Coast	E3101 (Hinterland and Coast) – overlaps with VA32	Numeric
38	<i>Allocasuarina paludosa</i> – <i>Banksia pauldoia</i> – <i>Schoenus breviculmis</i> – <i>Lepirodia neesii</i> – <i>Lindsaea linearis</i>	Mallee Open Woodland	EMCT	Mallee Heaths and Shrublands of the East Coast and Tablelands	T (Next to sea cliffs and beaches)	Numeric
39	<i>Epacris microphylla</i> – <i>Leptospermum trinervium</i> – <i>Banksia paludosa</i> – <i>Allocasuarina nana</i> – <i>Gonocarpus tetragynus</i> – <i>Lepidosperma filiformis</i>	Mallee Open Woodland	EMCT	Mallee Heaths and Shrublands of the East Coast and Tablelands	S (inland Nadgee Hills)	Numeric
40	<i>Banksia serrata</i> – <i>Lepidosperma concavum</i> – <i>Pteridium Esculentum</i>	Mallee Open Woodland	EMCT	Mallee Heaths and Shrublands of the East Coast and Tablelands	S	Numeric
41	<i>Eucalyptus consideniana</i> – <i>Lomandra longifolia</i> – <i>Pteridium esculentum</i> – <i>Monotoca scoparia</i> – <i>Gonocarpus teucroides</i>	Eucalypt Woodland	EWHSC	<i>Eucalyptus</i> Heathy Woodlands on Low Fertility Soils on the East Coast	E3101 (Wallagaraugh River catchment)	Numeric

Number	VMU	Division (L.4 IVC)	Abbreviation	Macrogrou (VFG)	API types	Classification
43	<i>Melaleuca squarrosa</i> – <i>Leptospermum tena</i> – <i>Schoenus breviculmis</i> – <i>Empodisma minus</i>	Mallee Open Woodland	EMCT	Mallee Heaths and Shrublands of the East Coast and Tablelands	S (Lower Wallagarragh River catchment–Nadgee)	Numeric
44	<i>Kunzea ambigua</i> – <i>Melaleuca armillaris</i> – <i>Callitris tetragona</i>	Temperate Heathland	HSCS	Heaths and Shrublands on Coastal Sands	V (Middle Wallagarragh River catchment–Nadgee)	Numeric
45	<i>Melaleuca armillaris</i> – <i>Juncus rausii</i> – <i>Lepidosperma concavum</i>	Temperate Heathland	HSCH	Heaths and Shrublands on Coastal Headlands	Z (difficult to separate from 46 using current code) need to split Z code	Numeric
46	<i>Melaleuca armillaris</i> – <i>Dichondra repens</i>	Temperate Heathland	HSCH	Heaths and Shrublands on Coastal Headlands	Z (difficult to separate from 45 using current code) need to split Z code	Numeric
47	<i>Acacia longifolia</i> – <i>Banksia integrifolia</i> – <i>Lomandra longifolia</i>	Temperate Heathland	HSCS	Heaths and Shrublands on Coastal Sands	Z (Sand dunes: easy to distinguish from 46 and 47) Also includes E07 Eucalypt Forest variants	Numeric
48	<i>Acacia longifolia</i> var. <i>Sophorae</i> – <i>Spinifex sericeus</i>	Temperate Heathland	HSCS	Heaths and Shrublands on Coastal Sands	Z (Foredunes)	Numeric
49	<i>Acmena smithii</i> – <i>Hedycarya angustifolia</i> – <i>Microsoris scandens</i> – <i>Lastreopsis micrantha</i>	Rainforest	RWT	Rainforest: Warm Temperate	R (Hinterland)	Numeric
50	<i>Ficus rubiginosa</i> – <i>Acmena smithii</i> – <i>Pittosporum undulatum</i>	Rainforest	RD	Rainforest: Dry	RE (Near coastal)	Numeric
51	<i>Acmena smithii</i> – <i>Ficus coronata</i> – <i>Cissus hypoglauca</i> – <i>Mardenia rostrata</i> – <i>Pellaea falcata</i>	Rainforest	RWT	Rainforest: Warm Temperate	R (Granite – perhaps slightly higher fertility near coast)	Numeric
51	<i>Backhousia myrtifolia</i> – <i>Notolaea venosa</i> – <i>Morinda jasminoides</i> – <i>Marsdenia rostrata</i> – <i>Doodia aspera</i> – <i>Pellaea falcata</i>	Rainforest	RD	Rainforest: Dry	RE (Wadbilliga)	Numeric
53	<i>Eucalyptus fastigata</i> – <i>Elaeocarpus reticulatus</i> – <i>Cyathea australis</i> – <i>Calocleana dubia</i>	Eucalypt Forest	ECT	<i>Eucalyptus</i> Mesic Eucalypt Forests of the Eastern Tablelands	E1801, E1805 (WLF) – inconsistency in CRAFTI mapping	Numeric
54	<i>Eucalyptus fastigata</i> – <i>Eucalyptus nitens</i> – <i>Bedfordia arborescens</i> – <i>Olearia argophylla</i>	Eucalypt Forest	ECT	<i>Eucalyptus</i> Mesic Eucalypt Forests of the Eastern Tablelands	WLF (E18*)	Numeric
55	<i>Eucryphia moorei</i> – <i>Fieldia australis</i> – <i>Crepidomanes venosum</i> – <i>Calocleana dubia</i>	Rainforest	RCT	Rainforest: Cool Temperate	R	Numeric
56	<i>Casuarina glauca</i> – <i>Cynodon dactylus</i> – <i>Tetrarhena Tetrarhena</i>	Freshwater Wetland	FWECFS	Freshwater Wetlands: Coastal Swamp Eucalypt Forests and Shrublands	S	Numeric
57	<i>Melaleuca ericifolia</i> – <i>Selliera radicans</i> – <i>Baumea juncea</i> – <i>Samolus repens</i>	Freshwater Wetland	FWECFS	Freshwater Wetlands: Coastal Swamp Eucalypt Forests and Shrublands	S (near saline estuaries)	Numeric
58	<i>Juncus kraussii</i> – <i>Phramites australis</i>	Saline Wetland	SWCBL	Saline Wetlands: Coastal Brackish Lakes	Z	Numeric
59	<i>Limonium australe</i> – <i>Juncus kraussii</i> subsp. <i>australiensis</i>	Saline Wetland	SWCBL	Saline Wetlands: Coastal Brackish Lakes	Y	Numeric
62	<i>Avicennia marina</i> subsp. <i>australasica</i> – <i>Aegiceras corniculatum</i> – <i>Samolus repens</i>	Saline Wetland	SWM	Saline Wetlands: Mangrove Mudflats	Needs better polygon linework	Numeric
63	<i>Sarcocornia quinqueflora</i> subsp. <i>Quinqueflora</i> – <i>Tecticornia arbuscula</i>	Saline Wetland	SWSM	Saline Wetlands: Coastal Salt-marsh	X (Saline estuaries)	Numeric
64	<i>Eucalyptus dalrympleana</i> – <i>E. radiata</i>	Eucalypt Forest	EWLFST	<i>Eucalyptus</i> (Grassy or Shrubby) Woodlands and Eucalypt Forests on Low Fertility Soils on the Eastern Tablelands	SCRA E1604	Numeric
73	<i>Eucalyptus pauciflora</i> – <i>E. viminalis</i> – <i>Acacia dealbata</i> – <i>Themeda triandra</i>	Eucalypt Forest	EWLFST	<i>Eucalyptus</i> (Grassy or Shrubby) Woodlands and Eucalypt Forests on Low Fertility Soils on the Eastern Tablelands	SCRA E1701	Numeric (SCRA)
75	<i>Eucalypt dives</i> – <i>Rytidosperma pallidum</i>	Eucalypt Forest	EWLFST	<i>Eucalyptus</i> (Grassy or Shrubby) Woodlands and Eucalypt Forests on Low Fertility Soils on the Eastern Tablelands	SCRA E1604	Numeric (SCRA)

Number	VMU	Division (L.4 IVC)	Abbreviation	Macrogroup (VFG)	API types	Classification
95	<i>E. pauciflora</i> – <i>E. dalrympleana</i> – <i>Acacia dealbata</i> – <i>Coronidium scorpioides</i>	Eucalypt Forest	EWLFST	<i>Eucalyptus</i> (Grassy or Shrubby) Woodlands and Eucalypt Forests on Low Fertility Soils on the Eastern Tablelands	SCRA E1701	Numeric (SCRA)
101	Logged Eucalypt Forest	Eucalypt Forest	RFCT	Regenerating Eucalypt Forests of the Coast and Tablelands	LF	Modelling needed
115	<i>Eucalyptus rossii</i> – <i>E. mannifera</i> – <i>Pultenaea procumbens</i> – <i>Rytidosperma pallidum</i>	Eucalypt Forest	EWLFST	<i>Eucalyptus</i> (Grassy or Shrubby) Woodlands and Eucalypt Forests on Low Fertility Soils on the Eastern Tablelands	SCRA E2605 Veg Type	Numeric (SCRA)
123	<i>Hakea micrantha</i> – <i>Baekkea utilis</i>	Freshwater Wetland	FWMB	Freshwater Wetlands: Montane Bogs and Fens	S	Numeric (SCRA)
134	Southern Escarpment (Wadbilliga) Moist Heath	Mallee Open Woodland	EMCT	Mallee Heaths and Shrublands of the East Coast and Tablelands	T – SCRA and Eden T	Numeric (SCRA)
135	<i>Eucalyptus moorei</i> – <i>Eucalyptus latiscula</i> – <i>Acacia kybeanensis</i>	Mallee Open Woodland	EMCT	Mallee Heaths and Shrublands of the East Coast and Tablelands	EMOR (Wadbilliga)	Expert
148	<i>Poa labillardierii</i>	Freshwater Wetland	FWMB	Freshwater Wetlands: Montane Bogs and Fens	A (SCRA): A (Bombala)	Numeric (SCRA)
198	<i>Pinus radiata</i> plantation	Exotic Eucalypt Forests	XCP	Exotic: Coniferous Eucalypt Forest plantation	PP	Expert
199	Grasslands: exotic	Temperate Grassland	GE	Grasslands: exotic tussock	EX	Expert
259	<i>Eucalyptus radiata</i> subsp. <i>radiata</i> – <i>E. sieberi</i> – <i>Leucopogon lanceolatus</i>	Eucalypt Forest	EWLFST	<i>Eucalyptus</i> (Grassy or Shrubby) Woodlands and Eucalypt Forests on Low Fertility Soils on the Eastern Tablelands	E31 (Wadbilliga – needs validation to possibly E31E1604)	Expert
300	Not Mapped	Not classified	NCL	Not classified		Expert
301	<i>Acacia blayana</i>	Acacia Shrubland	AST	<i>Acacia</i> Eucalypt Forests and Shrublands of the East Coast and Tablelands	FW (needs reclassification)	Expert
302	<i>Acacia olsenii</i> – <i>Eucalyptus wilcoxii</i>	Acacia Shrubland	AST	<i>Acacia</i> Eucalypt Forests and Shrublands of the East Coast and Tablelands	FW (needs reclassification)	Expert
303	Vegetation on Rocky Outcrops	Eucalypt Woodland	RVWS	Rocky Outcrops: woodlands or shrublands of the Coast and Eastern Tablelands	R (needs more vegetation plots)	Expert
304	<i>Eucalyptus moorei</i> – <i>E. latiuscula</i>	Mallee Open Woodland	EMCT	Mallee Heaths and Shrublands of the East Coast and Tablelands	FW (needs reclassification)	Expert
305	Eucalypt Forest regrowth	Eucalypt Forest	RFCT	Regenerating Eucalypt Forests of the Coast and Tablelands	FW (needs reclassification))	Expert
306	Introduced Eucalypt Forest–shrubland	Exotic Eucalypt Forests	XDF	Exotic: Deciduous Eucalypt Forests or shrublands	Needs a special code	Expert

Appendix S5. Maps of macrogroups (vegetation formation groups, VFGs) by mapping regions

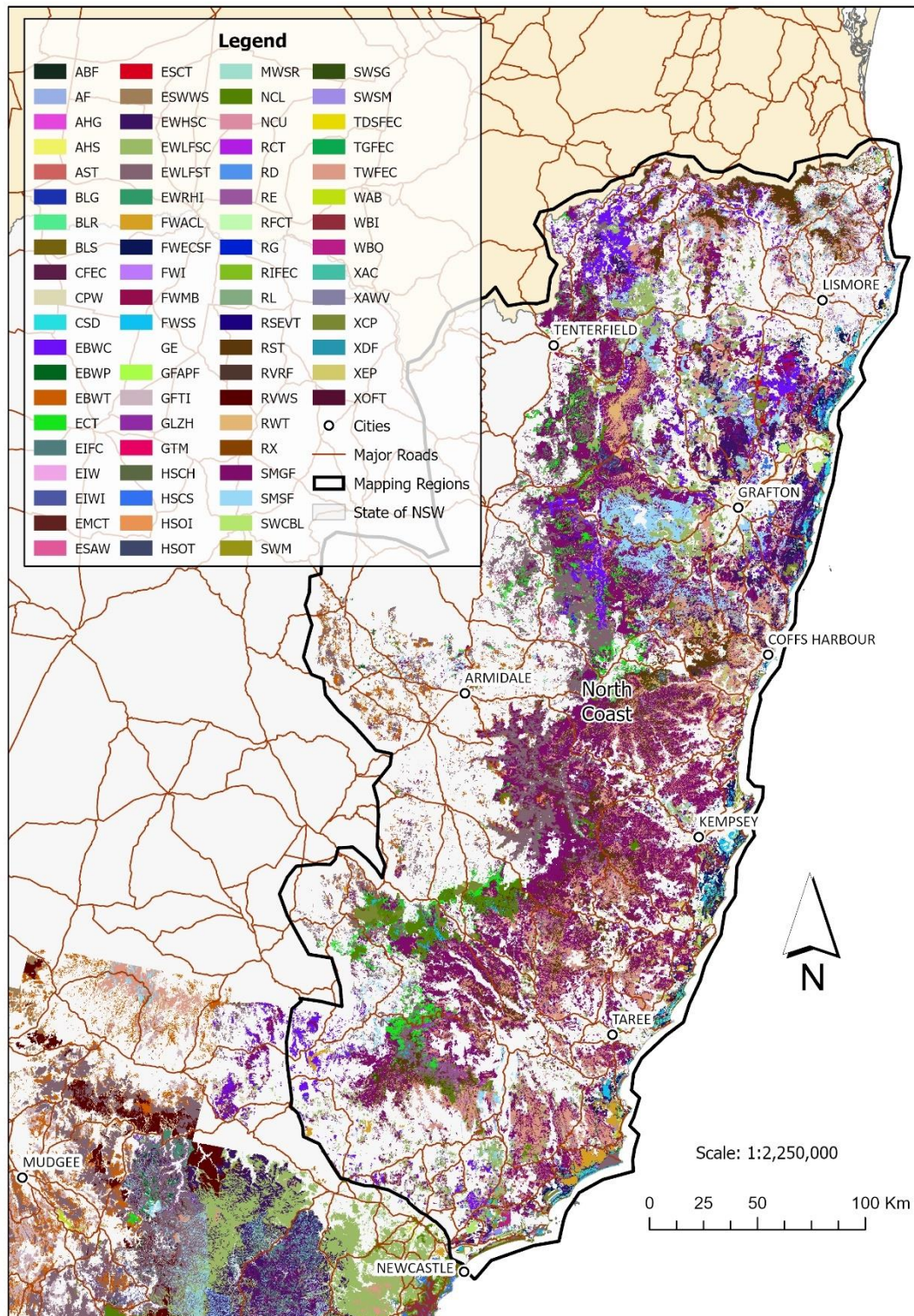


Fig. S2. Macrogroups (vegetation formation groups, VFGs) for North-Coast of Eastern NSW.

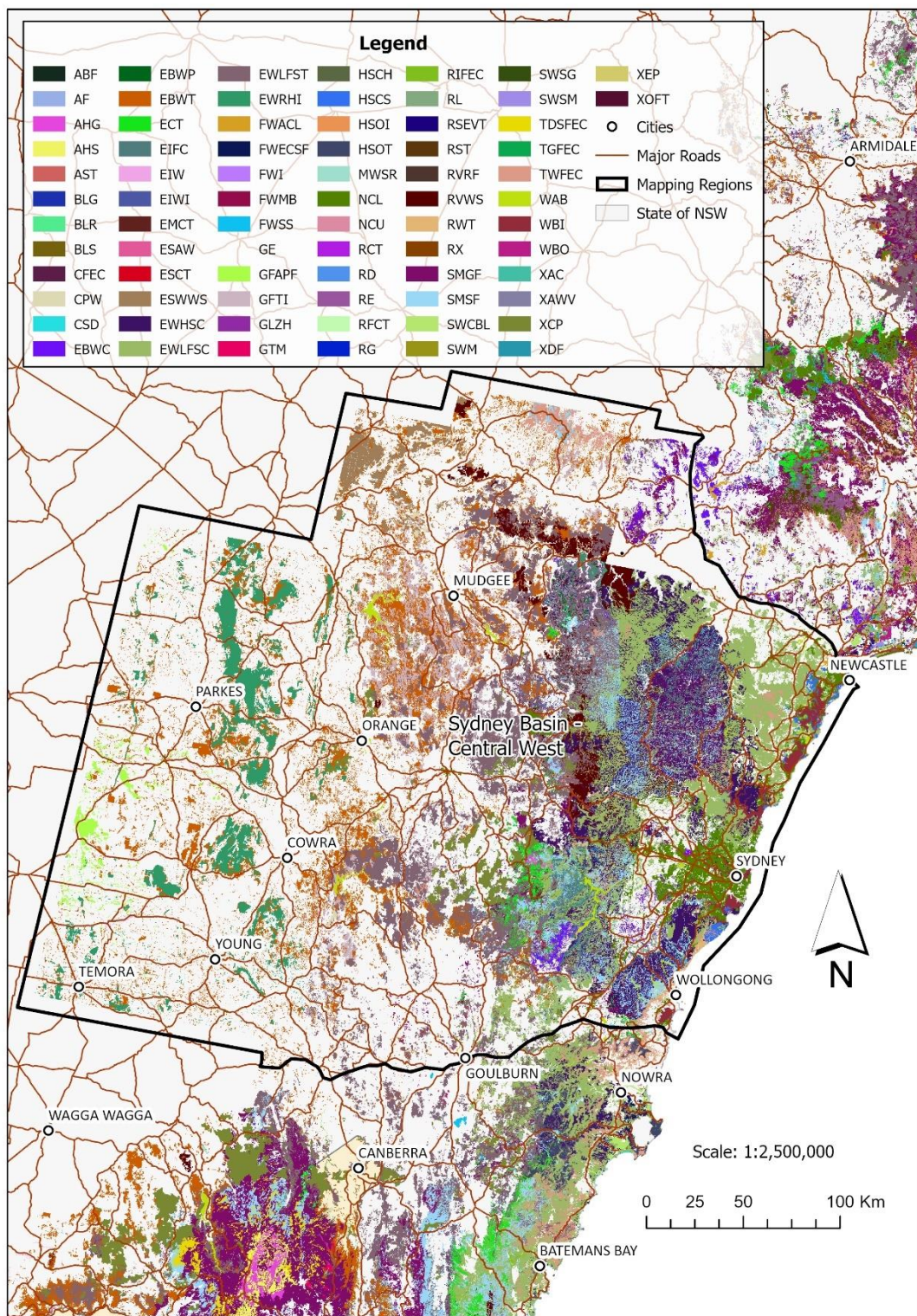


Fig. S3. Macrogroups (vegetation formation groups, VFGs) for Sydney Basin and Central West.

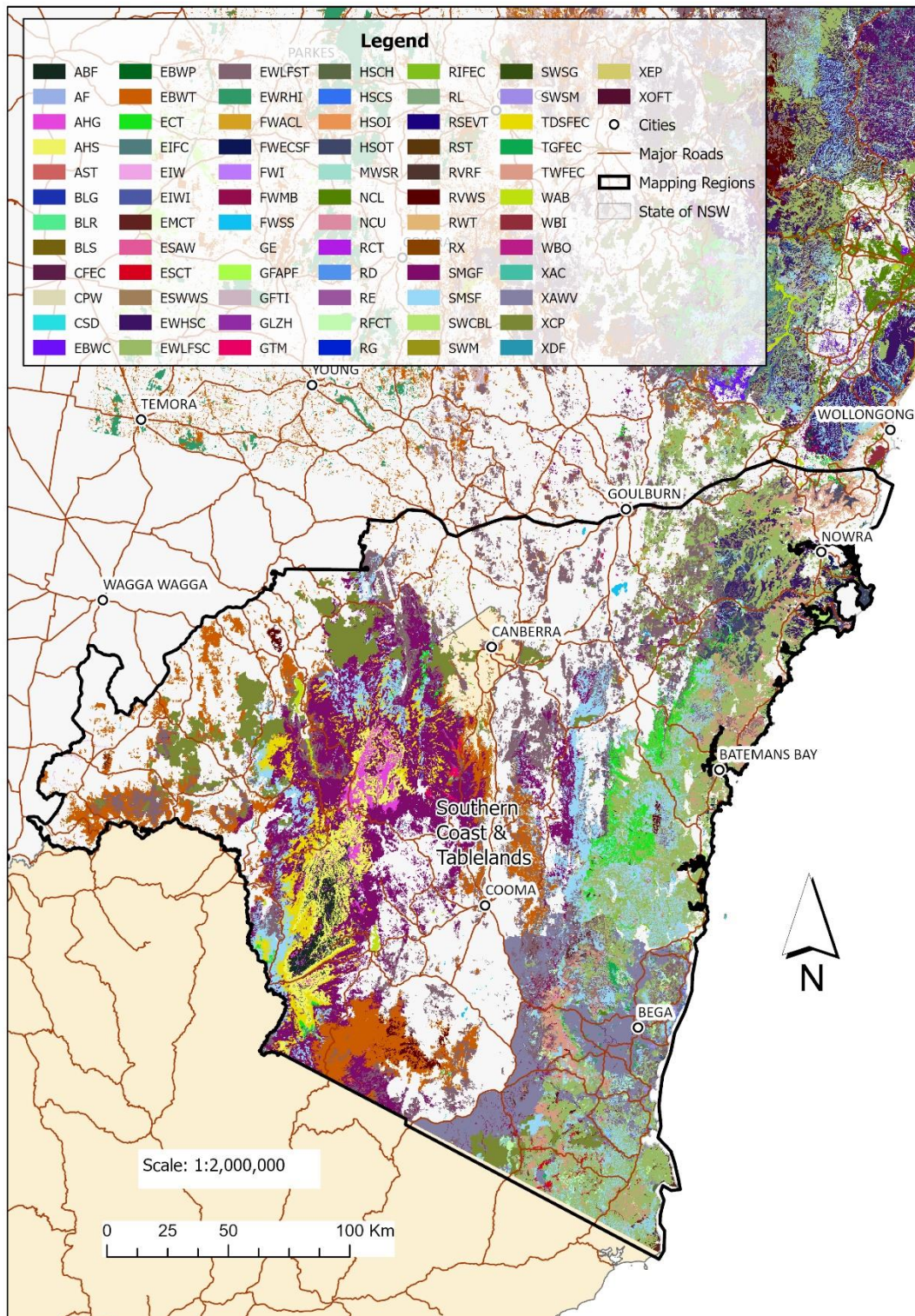


Fig. S4. Macrogroups (vegetation formation groups, VFGs) for South Coast & Tablelands.

Appendix S6

Table S9. Macrogroups (vegetation formation groups, VFGs) results tables for the NC, SBCW and SCT MAPPING regions

Numeric code	Division (L.4)	VFG Abbreviation	Macrogroup (VFG)	NC	SBCW	SCT	Total	% NC	% SBCW	% SCT	% Total
1	Acacia Forest	AST	<i>Acacia</i> Forests and Shrublands of the East Coast and Tablelands		617	5,172	5 789		0.0	0.1	0.02
2	Alpine Complex	ABF	Alpine Bogs and Fens			38 272	38 272			0.7	0.16
3	Alpine Complex	AF	Alpine Fjaeldmarks			280	280			0.0	0.00
4	Alpine Complex	AHG	Alpine Herbfields		2 413	43 526	45 939		0.0	0.8	0.20
5	Alpine Complex	AHS	Alpine Woodlands, Heaths and Shrublands		204	120 610	120 814		0.0	2.1	0.51
6	Bare land	BLG	Bare Land: Gravels–Alluvium–Sand–Soil	2 408			2 408	0.0			0.01
7	Bare land	BLBS	Bare Land: Beach Sand	11 531			11 531	0.2			0.05
8	Bare land	BLR	Bare Land: Rock	769	1 442	2 125	4 336	0.0	0.0	0.0	0.02
9	Eucalypt Forest	ECT	<i>Eucalyptus</i> Mesic Forests of the Eastern Tablelands	115 547	34 578	62 176	212 302	1.5	0.3	1.1	0.90
10	Eucalypt Forest	EIFC	<i>Eucalyptus</i> Ironbark Forests of the East Coast and Tablelands		94 449		94 449	0.0	0.9		0.40
11	Eucalypt Forest	EWLFSC	<i>Eucalyptus</i> (Grassy or Shrubby) Forests on Low-Moderate Fertility Soils on the East Coast	294 456	704 829	597 161	1 596 446	3.9	6.9	10.4	6.79
12	Eucalypt Forest	EWLFST	<i>Eucalyptus</i> (Grassy or Shrubby) Woodlands and Forests on Low Fertility Soils on the Eastern Tablelands	434 036	779 972	579 444	1 793 452	5.7	7.7	10.1	7.62
13	Eucalypt Forest	RFCT	Regenerating Forests of the Coast and Tablelands	14 589	3 555	23 272	41 416	0.2	0.0	0.4	0.18
14	Eucalypt Forest	RIFEC	Riparian Forests and Shrublands of the Eastern Coast and Tablelands (non-rainforest)	2 616	8 522	19 001	30 139	0.0	0.1	0.3	0.13
15	Eucalypt Forest	SMGF	<i>Eucalyptus</i> Semi-Mesic Grassy Forests and Woodlands of the Eastern Tablelands and Coast on Soils of Moderate Fertility	1 229 689	105 958	540 395	1 876 042	16.1	1.0	9.5	7.97
16	Eucalypt Forest	SMSF	<i>Eucalyptus</i> Semi-Mesic Shrub Forests and Woodlands of the Eastern Tablelands and Coast on Soils of Moderate Fertility	246 227	228 881	406 173	881 281	3.2	2.3	7.1	3.75
17	Eucalypt Forest	TDSFEC	<i>Eucalyptus</i> Tall Dry Shrub Forests and Woodlands of the Eastern Tablelands and Coastal Lowlands on Soils of High Fertility	751		99 052	99 804	0.0		1.7	0.42
18	Eucalypt Forest	TGFEC	<i>Eucalyptus</i> Tall Grassy Forests or Woodlands of the Eastern Coastal Lowlands on Soils of High Fertility		1 757	7 670	9 427		0.0	0.1	0.04
19	Eucalypt Forest	TWFEC	<i>Eucalyptus</i> Tall Mesic Shrub Forests of the Eastern Coastal Lowlands on Soils of High Fertility	647 281	78 803	129 842	855 926	8.5	0.8	2.3	3.64
20	Eucalypt Woodland	EBWC	<i>Eucalyptus</i> Box Woodlands of the East Coast Valleys	237 152	48 922		286 074	3.1	0.5		1.22

Numeric code	Division (L.4)	VFG Abbreviation	Macrogroup (VFG)	NC	SBCW	SCT	Total	% NC	% SBCW	% SCT	% Total
21	Eucalypt Woodland	EBWP	<i>Eucalyptus</i> Box (Mostly Grassy) Woodlands of the Inland Plains	2 265	4 299		6 564	0.0	0.0		0.03
22	Eucalypt Woodland	EBWT	<i>Eucalyptus</i> Box Woodlands of the Tablelands and Western Slopes	54 675	785 224	329 497	1 169 397	0.7	7.7	5.8	4.97
23	Eucalypt Woodland	EIW	<i>Eucalyptus</i> Communities of Inland Watercourses and Inner Floodplains	99	1 305	1 626	3 030	0.0	0.0	0.0	0.01
24	Eucalypt Woodland	EIWI	<i>Eucalyptus</i> Ironbark Woodlands and Forests of the Inland Slopes, Plains and Peneplains		15 455		15 455	0.0	0.2		0.07
25	Eucalypt Woodland	ESAW	<i>Eucalyptus</i> Subalpine Woodlands and Forests	4 609	752		5 361	0.1	0.0		0.02
26	Eucalypt Woodland	ESCT	<i>Eucalyptus</i> Swamp Communities of the Eastern Coast and Tablelands	18 294	4 823	6 636	29 752	0.2	0.0	0.1	0.13
27	Eucalypt Woodland	ESWWS	<i>Eucalyptus</i> (Grassy or Shrubby) Woodlands and Forests on Low Fertility Soils on the Western Slopes		95 974		95 974	0.0	0.9		0.41
28	Eucalypt Woodland	EWHSC	<i>Eucalyptus</i> Heathy Woodlands on Low Fertility Soils on the East Coast	154 965	417 377	43 190	615 532	2.0	4.1	0.8	2.62
29	Eucalypt Woodland	EWRHI	<i>Eucalyptus</i> Woodlands on Rocky Hills of the Inland		298 117		298 117	0.0	2.9		1.27
30	Eucalypt Woodland	EWT	<i>Eucalyptus</i> I <i>Corymbia</i> Woodlands of the Tropics								
31	Eucalypt Woodland	RVWS	Rocky Outcrops: Woodlands or Shrublands of the Coast and Eastern Tablelands	15 460	150 708	22 415	188 583	0.2	1.5	0.4	0.80
32	Exotic Forests	RX	Rainforest: exotics dominated	17 024	167		17 191	0.2	0.0		0.07
33	Exotic Forests	XAC	Exotic: Acacia forests		4		4		0.0		0.00
34	Exotic Forests	XAWV	Exotic: Introduced other agricultural woody vegetation		166		166		0.0		0.00
35	Exotic Forests	XCP	Exotic: Coniferous forest plantation	35 878	84 829	203 291	323 999	0.5	0.8	3.6	1.38
36	Exotic Forests	XDF	Exotic: Deciduous forests or shrublands		16	193	209		0.0	0.0	0.00
37	Exotic Forests	XEP	Exotic: Eucalypt forest plantation	25 429		79	25 509	0.3		0.0	0.11
38	Exotic Forests	XOFT	Exotic: Introduced other forests–shrublands		214		214		0.0		0.00
39	Freshwater Wetland	FWACL	Freshwater Wetlands: Aquatic communities of Coastal Lakes, Lagoons, and Rivers	33 737	1 629		35 365	0.4	0.0		0.15
40	Freshwater Wetland	FWECFS	Freshwater Wetlands: Coastal Swamp Forests and Shrublands	68 717	426	9 325	78 468	0.9	0.0	0.2	0.33
41	Freshwater Wetland	FWI	Freshwater Wetlands: Inland Aquatic Swamp and Shrubland Communities		3 206		3 206		0.0		0.01
42	Freshwater Wetland	FWMAL	Freshwater Wetlands: Montane and Alpine Freshwater Lakes								
43	Freshwater Wetland	FWMB	Freshwater Wetlands: Montane Bogs and Fens	122	79	11 919	12 120	0.0	0.0	0.2	0.05
44	Freshwater Wetland	FWSS	Freshwater Wetlands: East Coast and Tablelands Sedgeland Swamps	31 626	5 855	6 744	44 224	0.4	0.1	0.1	0.19

Numeric code	Division (L.4)	VFG Abbreviation	Macrogroup (VFG)	NC	SBCW	SCT	Total	% NC	% SBCW	% SCT	% Total
72	Rainforest	RSEVT	Rainforest: Semi-Evergreen Vine Forests and Ooline	1 984			1 984	0.0			0.01
73	Rainforest	RST	Rainforest: Sub-tropical	322 141	2 420	521	325 082	4.2	0.0	0.0	1.38
74	Rainforest	RVRF	Rocky Outcrops: Rainforest and Wet Forests of the Coast and Eastern Tablelands	4 445			4 445	0.1			0.02
75	Rainforest	RWT	Rainforest: Warm Temperate	29 183	17 414	30 657	77 254	0.4	0.2	0.5	0.33
76	Saline Wetland	SWCBL	Saline Wetlands: Coastal Brackish Lakes	22 491		7 995	30 485	0.3		0.1	0.13
77	Saline Wetland	SWISL	Saline Wetlands: Saline and Clay Lakes (Playas) of the Inland								
78	Saline Wetland	SWM	Saline Wetlands: Mangrove Mudflats	14 564	301	2 142	17 007	0.2	0.0	0.0	0.07
79	Saline Wetland	SWSG	Saline Wetlands: Seagrass Meadows	783			783	0.0			0.00
80	Saline Wetland	SWSM	Saline Wetlands: Coastal Salt-marsh	20 290		5 575	25 865	0.3		0.1	0.11
81	Shrubland	CCC	Coastal Cliff Communities								
82	Shrubland	CHS	Chenopod (Halophytic) Shrublands of the Inland								
83	Shrubland	CSD	Coastal Sand Dune Grasslands, Forblands and Shrublands	26 767		1 682	28 449	0.4		0.0	0.12
84	Shrubland	EMDI	<i>Eremophila</i> , <i>Melaleuca</i> and <i>Dodonaea</i> Shrublands of the Inland								
85	Water Bodies	WAB	Water Bodies: freshwater		33 253	10 567	43 820		0.3	0.2	0.19
86	Water Bodies	WBI	Water Bodies: saline estuaries	18 993	51 545		70 538	0.2	0.5		0.30
87	Water Bodies	WBO	Water Bodies: Oceans	3 215			3 215	0.0			
	Total number	85	Number of vegetation groups per region	7 642 128 49	10 166 365 55	5 716 786 46	23 525 280 71	100.0	100.0	100.0	
			Percentage of region	58%	65%	54%	84%				

References

- Baur GN (1962). Forest vegetation in north-eastern NSW. Research note number 8, Forestry Commission of NSW.
- Beadle NCW (1981) 'The Vegetation of Australia.' (Cambridge University Press: London, UK)
- Belbin L (1991) The analysis of pattern in bio-survey data. In 'Nature Conservation: Cost Effective Biological Surveys and Data Analysis'. (Eds CR Margules, MP Austin) pp. 176–190. (CSIRO) doi:10.1071/9780643101241
- Benson JS, Allen C, Togher C, Lemmon J (2006) New South Wales vegetation classification and assessment: part 1 plant communities of the NSW Western Plains. *Cunninghamia* **9**, 383–451.
- Braun-Blanquet J (1932) 'Plant Sociology: the Study of Plant Communities.' (McGraw-Hill: London UK)
- Gellie NJH (2005) Native vegetation of the southern forests: South Eastern Highlands, Australian Alps, South West Slopes and South-East Corner bioregions. *Cunninghamia* **9**, 219–254.
- Holme L (1993) Eastern bushland database: Central Region. Report to the Save the Bush Grants Committee. National Parks and Wildlife Service, Sydney, NSW, Australia.
- Keith DA (2004) 'Ocean Shores to Desert Dunes: the Native Vegetation of New South Wales and the ACT.' (New South Wales Government: Sydney, NSW, Australia).
- Keith DA, Bedward M (1999) Native vegetation of the South-East Forest region, Eden, New South Wales. *Cunninghamia* **6**, 1–218.
- NSW National Parks and Wildlife Service (1999) CRAFTI report for the Southern CRA Region. SCRA Unit, Southern Zone. A project for the Joint Commonwealth NSW Regional Forest Agreement Steering Committee and Resource and Assessment Council (RACAC) as part of the NSW Comprehensive Regional Assessments. Queanbeyan, NSW, Australia.
- NSW National Parks and Wildlife Service (2001a) Completion of GIS Products for the Upper North-East CRAFTI Floristics Layer. SCRA Unit, Northern Zone. Resource and Assessment Council RACAC, Coffs Harbour, NSW, Australia.
- NSW National Parks and Wildlife Service (2001b) Completion of GIS products for the Lower North-East CRAFTI Floristics Layer. NSW Regional Assessments. Resource and Assessment Council RACAC, Sydney, NSW, Australia.
- Tozer MG, Turner K, Keith DA, Tindall D, Pennay C, Simpson C, MacKenzie B, Beukers P, Cox S (2010) Native vegetation of southeast NSW: a revised classification and map for the coast and eastern tablelands. *Cunninghamia* **11**, 359–406.