

SUPPLEMENTARY MATERIAL

Intraspecific diversity of terpenes of *Eucalyptus camaldulensis* (Myrtaceae) at a continental scale

Carlos Bustos-Segura^{A,B,D}, Shannon Dillon^C, Andras Keszei^A, William J. Foley^A and Carsten Külheim^A

^AEvolution, Ecology and Genetics Division, Research School of Biology, The Australian National University, Canberra, ACT 2601, Australia.

^BPresent address: Laboratory of Evolutive Entomology, Institute of Biology, University of Neuchâtel, Rue Emile-Argand 11, 2000 Neuchâtel, Switzerland.

^CGenetic Diversity and Adaptation, CSIRO Agriculture, Bldg. 2/79, Canberra, ACT 2601, Australia.

^DCorresponding author. Email: bustossc@gmail.com

Table S1. Results for the fixed effects from the linear mixed models testing for differences in terpenes between ambient and elevated CO₂ plant groups, chemotypes and their interaction (CO₂ : Chmt). Significant values are shown in bold text. The significance *P* values were obtained with a χ^2 Wald's test and an ANOVA type II design. The estimates indicate the difference between plants under elevated CO₂ and ambient CO₂ from a model without the interaction term, where positive values indicate higher concentration under elevated CO₂ conditions. The standard error of the estimates is shown in parentheses. Asterisks indicate the significance value: *P* < 0.05 (*), *P* < 0.01 (**), *P* < 0.001 (***).

	Estimate		Chi square			
	CO ₂ treatment		CO ₂ treatment d.f.=1	Chemotype d.f.=3	CO ₂ : Chmt d.f.=3	Total terpenes d.f.=1
Monoterpenes	-3.31	(1.52)	4.7*	8.9*	3.4	
Sesquiterpenes	-0.32	(0.22)	2.2	25.2***	3.3	
1,8-Cineole	0.76	(0.49)	2.4	255.4***	6.6	1057***
γ -Terpinene	0.40	(0.39)	1.02	392.7***	5.5	21.1***
α -Phellandrene	-0.47	(0.18)	8.6**	1435***	103.4***	10.9***
β -Phellandrene	0.02	(0.15)	0.02	959.0***	10.6*	14.3***
α -Pinene	0.10	(0.33)	0.10	43.9***	0.37	160.5***
β -Pinene	-0.56	(0.14)	15.5***	1.97	5.6	5.3*
<i>p</i> -Cymene	0.13	(0.11)	1.47	345.5***	11.0*	9.9**
Bicyclogermacrene	0.01	(0.10)	0.01	82.3***	0.9	3.9*

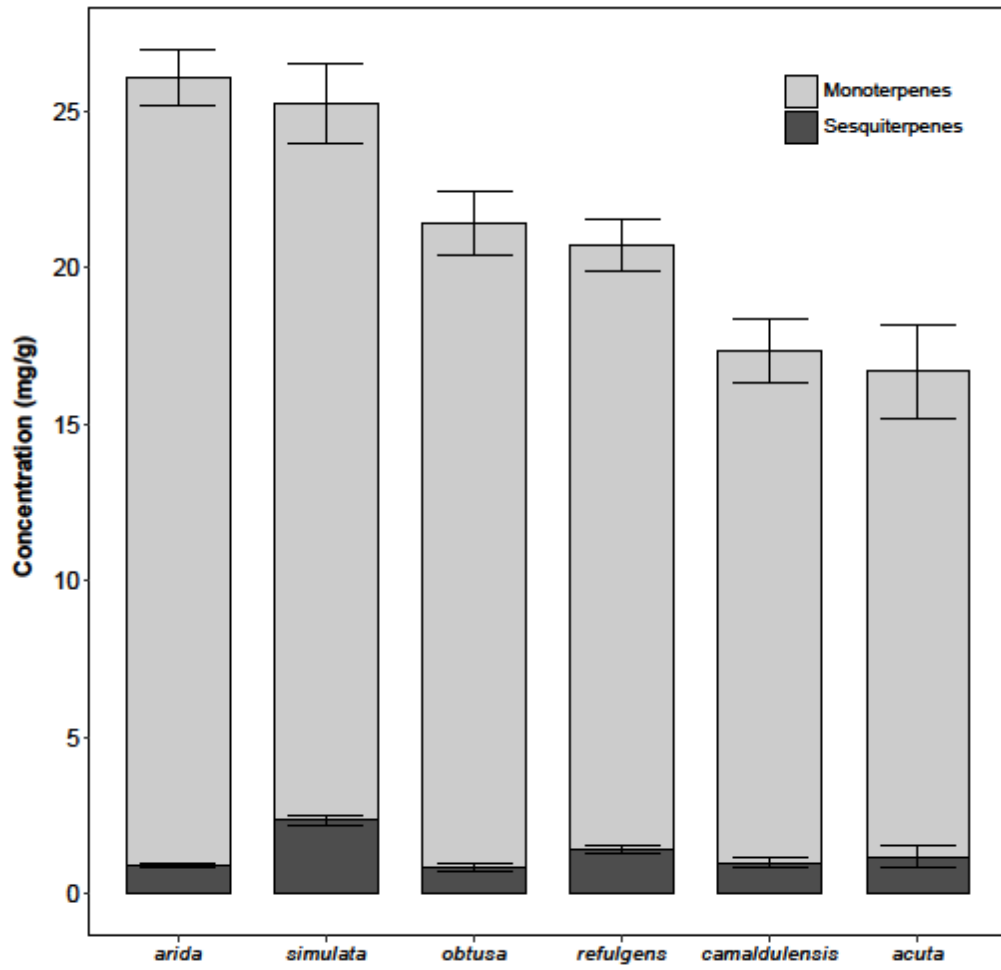


Figure S1. Mean total concentrations for monoterpenes and sesquiterpenes among *Eucalyptus camaldulensis* subspecies. Bars indicate \pm s.e.m.